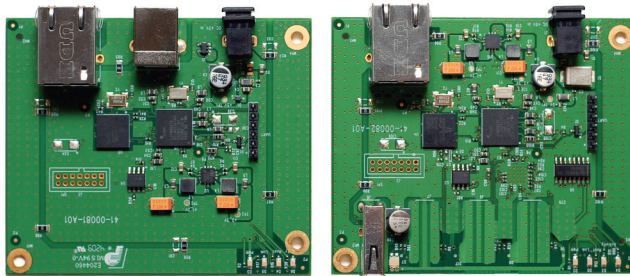




LEX/REX Turnkey 2201

Cat 5 USB 2.0 Extender

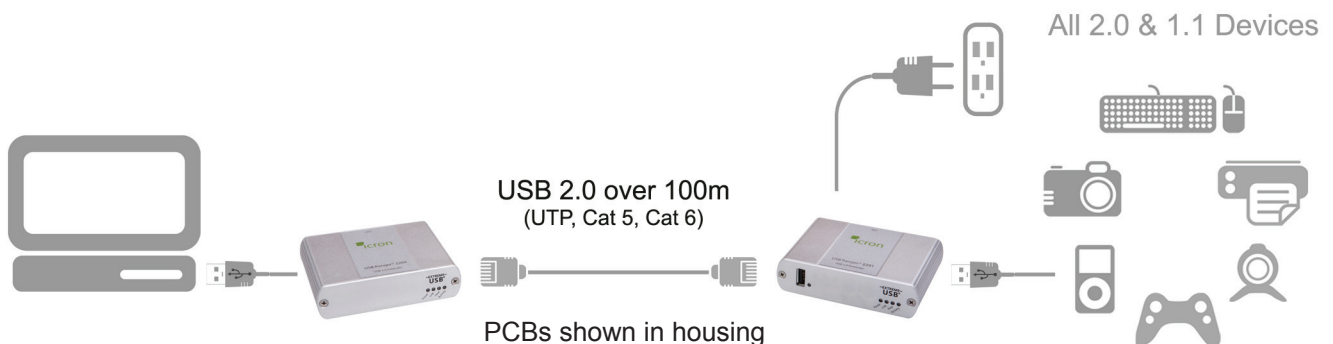


LEX/REX Turnkey 2201 extends USB 2.0 beyond the desktop up to 100m over standard Cat 5 cable using ExtremeUSB® technology.

LEX/REX Turnkey 2201 Features

LEX/REX Turnkey 2201 hardware is ideal for OEM integration of ExtremeUSB® technology.

- Turnkey hardware provides a complete, working ExtremeUSB® solution without housing for integration into custom housings or larger systems.
- Powered by ExtremeUSB® Long reach USB 2.0 enabled by Icron's LionsGate™ USB 2.0 Extension ASIC.
- Extends USB 2.0 high-speed and USB 1.1 (low-speed, full speed) devices up to 100m over Cat 5 cable.
- Operates with USB 2.0 high-speed host controllers and USB 1.1 classic hosts.
- Supports all USB device types: Control, Interrupt, Bulk and Isochronous at up to 480Mbps.
- True plug and play, ready to operate right out of the box. No new driver installation required.
- Supports all major operating systems including Windows®, Mac OS®, and Linux®.
- Provides one remote USB 2.0 port. Number of devices can be increased using additional USB hubs.
- AC power adapter at remote unit provides standard 500mA to USB port.
- Power adapter at local unit is not required for normal operation.
- Ideal for a wide variety of USB devices, from printers, scanners, hard drives, and audio devices, to touch screens, web cams, and game controllers.



Ordering Information

The LEX/REX Turnkey 2201 system includes a LEX and REX unit and a power supply unit located at the REX. LEX/REX Turnkey 2201 components can be ordered individually to complete an OEM system as desired.

Name	Part Number	Description
------	-------------	-------------

Modules

USB Ranger 2201 LEX	10-00231	USB Ranger 2201 LEX Module, complete with housing, no power supply
USB Ranger 2201 REX	10-00232	USB Ranger 2201 REX Module, complete with housing, no power supply

Turnkey PCBs

Turnkey 2201 LEX	10-00163	Turnkey 2201 LEX PCB, without housing
Turnkey 2201 REX	10-00230	Turnkey 2201 REX PCB, without housing

Power Adapters

Power Adapter	21-00053	5V 3A, International (100-240V) Power Adapter
Power Cord	21-00055	Power Cord for 21-00053, North American Plug
Power Cord	21-00056	Power Cord for 21-00053, European Plug
Power Cord	21-00057	Power Cord for 21-00053, UK Plug
Power Cord	21-00058	Power Cord for 21-00053, Australian Plug

Product Specifications

Range	100m (330ft) over Cat 5e (or better) cable
LEX unit USB connector	1 x USB Type B
LEX unit Link connector	1 x RJ45
REX unit Link connector	1 x RJ45
REX unit USB connector	1 x USB Type A
Power adapter Maximum Rating	5V DC @ 3A
Current available to USB at REX	1 x 500mA
Operating temperature range	0°C to 50°C
LEX and REX unit dimensions	3.94" x 2.99" x 1.02" (100 mm x 76 mm x 26 mm)
PCB dimensions	3.35" x 2.81" x 0.65" (85 mm x 71.5 mm x 16.5 mm)
Turnkey PCB weights	LEX 0.11 lbs. (50 grams), REX 0.13 lbs. (60 grams)*
Turnkey PCB with housing weights	LEX 0.42 lbs. (190 grams), REX 0.44 lbs. (200 grams)*
Regulatory testing	FCC (Class B), IC (Class B), CE (Class B)
ESD Rating	EMC EN-61000-4-2:2001 8kV Contact, 16kV Air

Specifications subject to change without notification.

*Weights are approximate.

Contact sales@icron.com for more information.

©2011 Icron Technologies
Corporation US Patents
6,381,666 B1 & 7,149,833

Document #90-00857-A01

4664 Lougheed Highway, Suite 221, Burnaby, BC V5C 5T5
T: 604-638-3920 F: 604-638-3930 sales@icron.com



www.icron.com