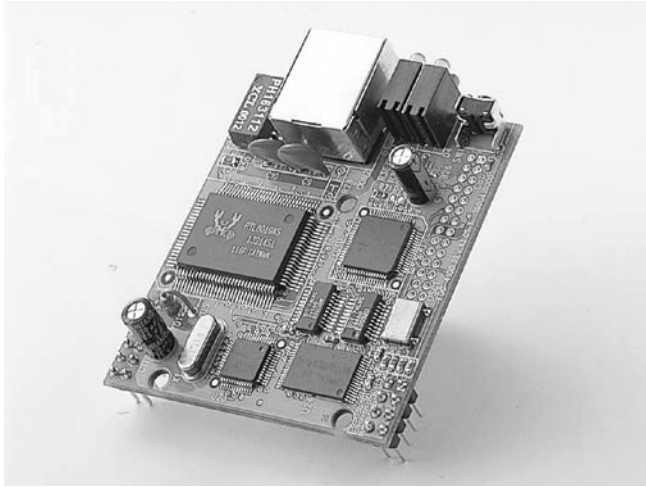


# EDG-4100

# EDG-4110

1-port RS-232 to Ethernet Data Gateway Module

1-port RS-422/485 to Ethernet Data Gateway Module



FCC CE

## Features

- Supports 10/100Base-T Ethernet standard
- Supports high transmission speeds up to 230 kbps
- Supports LED indicators for easy diagnosis
- Provides RS-232 (EDG-4100), 422/485 (EDG-4110) interfaces
- Supports TCP/IP protocol
- Provides 8 universal digital inputs/outputs for emergent ON/OFF control
- Easy configuration via utility
- Supports Windows® 98/NT/2000/XP driver
- Automatic RS-485 data flow control (EDG-4110)
- Easy to mount through backside PIN connectors

## Introduction

EDG-4100 and EDG-4110 are fast and cost-effective network-enabled board modules. EDG-4100 provides one RS-232 port, while EDG-4110 provides one RS-422/485 port. The modules enable nearly any device to communicate over the Internet and shared networks, and they allow network devices to be remotely monitored, managed, and controlled. Functionally transparent and efficient, EDG-4100 and EDG-4110 provide a complete software and hardware solutions. The modules effectively eliminate the need for OEMs and systems integrators to invest engineering resources to develop Ethernet networking solutions, and reduce the time it takes to bring intelligent devices to market. Thus, the modules are especially suitable for remote management and data accessibility to thousands of devices that cannot previously could not connect to the network such as: factory machinery, security systems, heating and ventilation systems, lighting control systems and Point-of-Sale devices.

EDG-4100 and EDG-4110 are 54 x 59 mm Ethernet-enabled boards, so they can easily fit into almost any device. Pin headers are provided to connect LAN, DI/O, power and RS-232/422/485 into your boards, for a quick and cost-effective method to connect the system to the Internet. There are also 8 DI/O, which provides additional flexibility.

EDG-4100 and EDG-4110 replace expensive dedicated PCs or lengthy serial cables with fast and reliable networking technology.

## Specifications

- **Protocol** TCP/IP
- **Compatibility** IEEE 802.3, IEEE 802.3u
- **Interface** Network: 10/100 Base-T Ethernet  
Serial: RS-232 (EDG-4100)  
RS-422/485 (EDG-4110)
- **Port** 1 Independent RS-232 port (EDG-4100)  
1 Independent RS-422/485 port (EDG-4110)
- **Connector** Network: RJ-45 or 4-pin header  
Serial: 8-pin header
- **DI/DO** 4DI, 4DO
- **Transmission Speeds** 50 bps ~ 230 kbps
- **Parity Bits** Odd, even, none, space, mark
- **Data Bits** 5, 6, 7, 8
- **Stop Bits** 1, 1.5, 2
- **Diagnostic LEDs** Network: Tx/Rx, Link, Speed
- **Utility Software** Configuration utility  
Port mapping utility
- **Driver Support** Windows® 98/NT/2000/XP
- **Power Requirement** 5 V<sub>DC</sub> ± 5%
- **Power Consumption** 0.6 W @ 10 M, 0.9 W @ 100 M
- **Operating Temperature** 0 ~ 60° C (32 ~ 140° F)
- **Storage Temperature** -20 ~ 80° C (-4 ~ 176° F)
- **Operating Humidity** 20 ~ 95% (non-condensing)
- **Storage Humidity** 0 ~ 95% (non-condensing)

## Ordering Information

- **EDG-4100** 1-port RS-232 to Ethernet Data Gateway Module
- **EDG-4110** 1-port RS-422/485 to Ethernet Data Gateway Module