

# FPM-3171G

# FPM-3171S

## 17" SXGA Industrial Monitor with Resistive Touchscreen, Direct-VGA and DVI Ports



### Features

- 17" SXGA TFT LCD with resolution up to 1280 x 1024
- Robust design with stainless steel chassis and aluminum front panel
- Anti-reflective screen with tempered glass
- Supports stainless steel front panel with 316L materials
- OSD control pad on front panel
- Supports industrial 24-48 V<sub>DC</sub> power input (optional)
- Supports panel, wall, desktop, rack or VESA arm mounting
- Front panel is NEMA4/IP65 compliant
- Front panel stainless steel with 316L level (FPM-3171S)

### Introduction

FPM-3171G is a 17" color TFT LCD flat panel monitor specifically designed for industrial applications. With a viewing size as large as 17", it presents an ample display area as well as vivid and sharp images for your HMI. It features direct VGA signal transmission. You can thus upgrade the displays without making changes to the existing system. The onscreen display function also makes it easy to adjust the images on the screen. The whole chassis is designed in stainless steel and the front panel is made of aluminum with front panel NEMA4/IP65 compliance.

### Specifications

#### General

- **Button Controls** OSD (Onscreen Display) control pad on front panel
- **Certification** BSMI, CCC, CE, FCC Class B, UL
- **Dimension (W x H x D)** 482 x 354.8 x 63.5 mm (18.98" x 13.97" x 2.5")
- **Enclosure**
  - Front panel:
  - FPM-3171G: Aluminum with coating
  - FPM-3171S: Stainless steel with 316L level
  - Rear cover: Stainless steel chassis
- **Mounting** Panel, wall, desktop, VESA arm & 19" rackmount
- **Power Input** DC Jack - Optional external 57 W power adapter, with 100 ~ 240 V<sub>AC</sub> input and 12 V<sub>DC</sub> @ 4.75 A output
- **Power Consumption** 35 W + 20%
- **Video Port** VGA & DVI-D port
- **Weight (Net)**
  - FPM-3171G: 9.25 kg (20.39 lbs)
  - FPM-3171S: 13.1 kg (28.88 lbs)

#### LCD Display

- **Display Type** SXGA TFT LCD
- **Display Size** 17"
- **Max. Resolution** 1280 x 1024
- **Max. Color** 16.2 M
- **Viewing Angle (H/V°)** 170/160
- **Luminance (cd/m<sup>2</sup>)** 380
- **Backlight Life (hrs)** 50,000
- **Contrast Ratio** 1000 : 1

#### Touchscreen (Optional)

- **Sensor** ELO
- **Driver** ELTOUCH
- **Type** 5-wire Resistive
- **Interface** RS-232 or USB
- **Lifespan** 35 million touches at a single point
- **Light Transmission** 80% ±5
- **OS Support** Windows XP, Vista, 7, XPe, CE and Linux
- **Power Consumption** +5 V @ 100 mA
- **Touch Resolution** Linearity

#### Environment

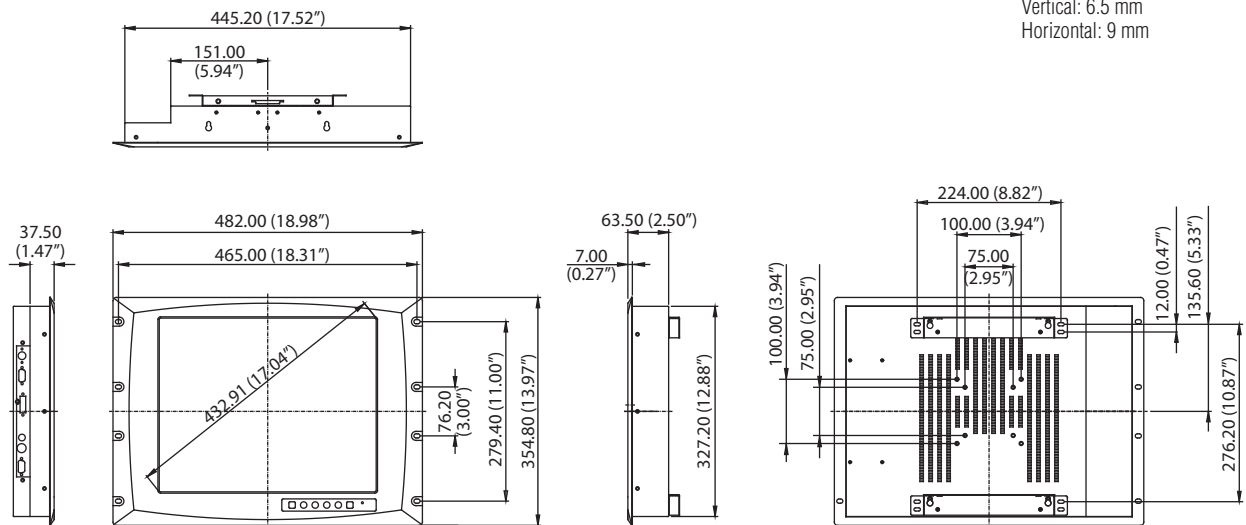
- **Operation Temperature** 0 ~ 50° C (32 ~ 122° F)
- **Storage Temperature** -20 ~ 60° C (-4 ~ 140° F)
- **Humidity (Storage)** 10 ~ 90% non-condensing
- **Waterproof** Front panel is NEMA4/IP65 compliant
- **Vibration** 5 ~ 500 Hz, 1 Grms (Operating, Random)

### Ordering Information

- **FPM-3171G-XCE** 17" SXGA Ind. Monitor
- **FPM-3171G-RCE** 17" SXGA Ind Monitor w/Resistive TS (RS-232, USB)
- **FPM-3171S-R3AE** 17" SXGA Ind. Monitor w/Resistive TS (RS-232,USB)

## Dimensions

Unit: mm



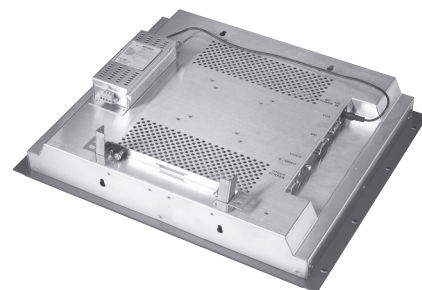
Diameters of the rackmount holes:  
Vertical: 6.5 mm  
Horizontal: 9 mm

**Panel Cut-out Dimensions: 451 x 333 mm (17.75" x 13.11")**

## Accessories

- **PWR-246E** Ind. DC to DC w/24-48 V<sub>DC</sub> 1.4-2.9A In 12 V<sub>DC</sub> 5A Out
- **1702002600** Power Cable US Plug 1.8 M
- **1702002605** Power Cable EU Plug 1.8 M
- **1702031801** Power Cable UK Plug 1.8 M
- **1702031836** Power Cable China/Australia Plug 1.8 M
- **1757002742** Adapter AC 90-264V 57W SPU63-105

## Mounting with DC Source



## Stainless Steel front panel (FPM-3171S)



## I/O View

