



WebOIT Features

- Ready to run; no wasted time loading software, configuring interfaces or solving integration problems.
- Powerful, flexible, state-of-the-art graphics based HMI system to quickly and efficiently create user-friendly operator screens on any Windows® desktop PC.
- Work quickly utilizing time saving graphic libraries and screen templates.
- One development package can be used for unlimited number of runtime systems.
- HMI tool creates web pages compatible with any PC running a standard web browser.
- OPC technology provides seamless access of data between HMI and PLC programs, so no time is wasted manually transferring information.
- Built in multi-level security by password, IP permission or customization.
- Constructed for harsh industrial environments with a fire resistant plastic molded frame and a front panel that meets IP 65 standards.

Introduction

Advantech Automation's WebOIT is a powerful all-in-one, ready to run solution for your operator panel needs. The WebOIT has the capability to give you unprecedented access to machine and process data from your PLC via the Internet with its web-enabled automation technology. Secure, real time interaction with machine or process data enables monitoring production, troubleshooting processes and diagnosing equipment problems without traveling to the shop floor or relying on proprietary software installed on your PC.

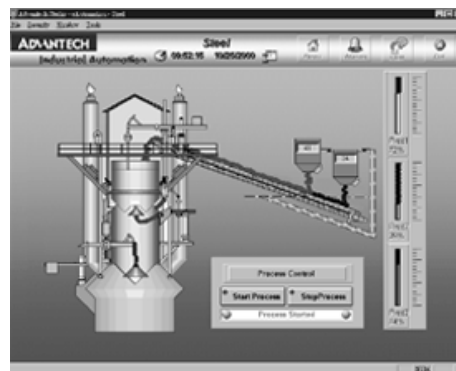
WebOIT Package

The WebOIT comes with everything you need to get to work and get connected:

- Durable, space-conscious Advantech Automation 6.4" or 10" Color VGA Touch panel PC
- Powerful Windows® CE operating system
- Advantech graphics software enabling full-function control and monitoring
- Integrated web server for world-wide connection
- Choice of one server for PLC communications (ADAM, AB, Modbus, etc.)

Advantech Studio - Software Development Tool for the WebOIT

- **Remote Management of Plant Data**
Easily connect to real-time plant data via standard web browser
- **Alarm Notification**
Automatically sends alarm notice via pager or e-mail
- **Trend Monitoring**
Monitors process behavior online or through historical trending
- **Recipes and Reports**
Flexible recipes or reports offering instant viewing over the web
- **Input/Output**
Includes device drivers, supports OPC & various PC control packages
- **Graphic Creation**
Create sophisticated interfaces with ease of point and click, extensive symbol library



Advantech Studio software creates interactive data pages

WebOIT-650/1000 System Features

The slim WebOIT-650 & WebOIT-1000 touchscreen panel PCs are powerful solutions for all industrial applications. Advantech designed these compact touchscreen PCs to provide the functionality of a desktop PC in a rugged, durable system perfect for space critical applications. The WebOIT-1000 is armed with a high brightness 10.4" VGA/DSTN LCD display for easy viewing and a 5x86-133 CPU processor. The WebOIT-650 carries a 6.4" VGA STN LCD display and a powerful Intel Pentium 266 MMX CPU processor. With UL, FCC Class A and CE certifications, both the WebOIT-650 & WebOIT-1000 are suitable for industrial and transportation applications.

WebOIT-650:



- Constructed for industrial environments with a plastic molded frame with an optional metal PC/104 expansion cover
- Built-in protection system with an adjustable Watchdog timer
- **Designed for space limited environments (W x H x D):** 7.76" x 5.61" x 2.49" (197.5 x 142.8 x 63.4)
- **Light weight for easy handling and mounting:** 3.3 lbs (1.5 kg)
- **Carries two serial ports on board for Internet and Intranet connectivity:** one configurable to RS-422/485, one parallel port
- **Disk drive housing:** Supports type II CompactFlash™ socket
- Keyboard and mouse ports for complete compatibility with most PC instruments
- The WebOIT-650 also carries 32 MB RAM on board as well as a built in Ethernet

WebOIT-1000:



- Installs as a panel mount, wall mount, swing arm or stand for ultimate flexibility
- **Offers two serial ports for Internet and Intranet connectivity:** one configurable to RS-422/485, one parallel port
- **Compact design for space critical applications (W x H x D):** 13.5" x 10.4" x 2.4" (342 x 265 x 61.6 mm)
- **Light weight for easy handling and mounting:** 5.9 lbs (2.7 kg)
- Protects system and data with a 1.6 sec. Watchdog timer
- Built for harsh conditions with a fire-resistant plastic frame and a front panel that meets IP 65
- Keyboard and mouse ports for complete compatibility with most PC instruments
- **The WebOIT-1000 also comes complete with:** 32 MB disk on chip, a lithium battery for CMOS backup and a built in ethernet

LCD Specification

Model	WebOIT-650
Display type	TFT
Display size (diagonal)	6.4"
Max colors	256K
Resolution	640 x 480 (VGA)
Dot pitch (H V, mm)	0.0675 x 0.203
Pixel pitch (H V, mm)	0.203 x 0.203
Viewing angle (°)	110
Luminance (cd/m ²)	300
Storage temperature (°C)	-25~70
Operating temperature (°C)	0 ~ 55
Backlight	2 CCFL
Contrast ratio	120

LCD Specification

Model	WebOIT-1000
LCD type	10.4" color DSTN
Resolution/colors	640 x 480 @ 64K
Pixel pitch (mm)	0.33 X 0.33
Luminance (cd/m ²)	130
Viewing angle (°)	90°
VR control	Contrast
Simultaneous mode	Yes
LCD MTBF	50,000 Hours
Backlight MTBF	20,000 Hours

Advantech Studio

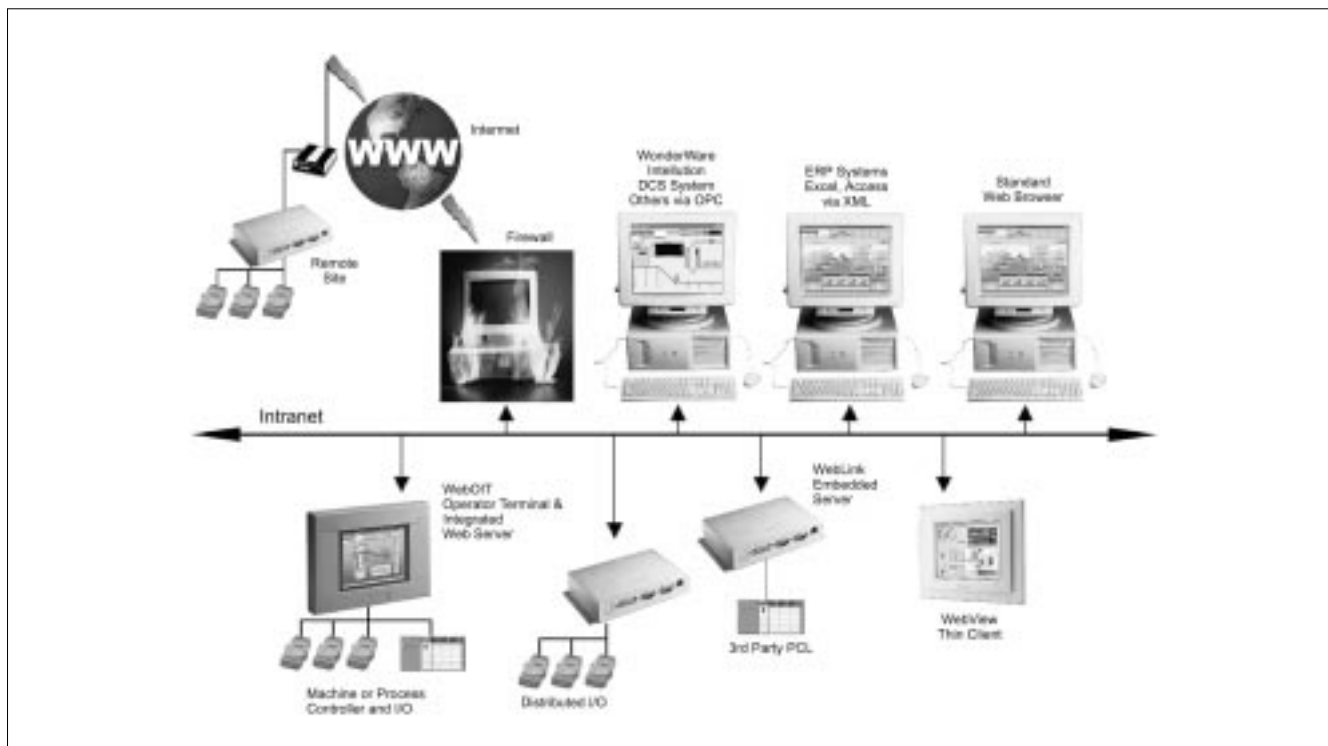
Advantech Studio software powers the communication process for the entire WebOIT package. This powerful software enables programming and updates to be developed via the Internet or your existing network. Your WebOIT system is armed with over 140 drivers for complete PLC flexibility. One copy of Advantech Studio is all that is needed, as the runtime license is included with the hardware purchase.

Create Detailed Web Pages

The WebOIT's HMI development tools help you create simple or complex web pages that can be viewed anywhere in the world via a PC running a standard web browser. You can have your own web pages created and your WebOIT system up and running in less than two hours. Once connected to the WebOIT, your created web pages can be viewed complete with graphics and data. Determine via the Web the status of your machine or process, check production flow, monitor diagnostic data, or even make realtime parameter adjustments.

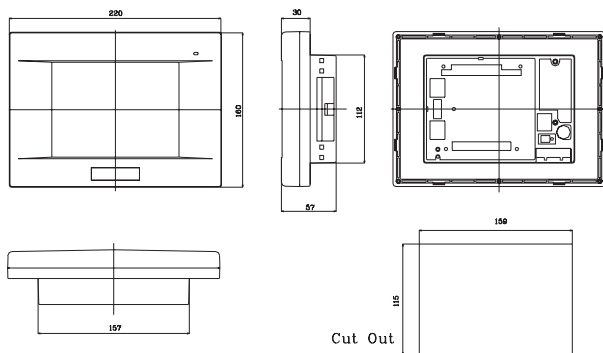
Security

Both WebOIT systems come complete with built-in security to ensure your data is protected. Each WebOIT touch screen is equipped with a watchdog timer that monitors all access. Management can choose from a variety of different safeguards to determine security admittance methods. Security can be built around a password or by allowing only certain IP addresses permission into the system. A combination of these security methods can also be implemented for complete protection.

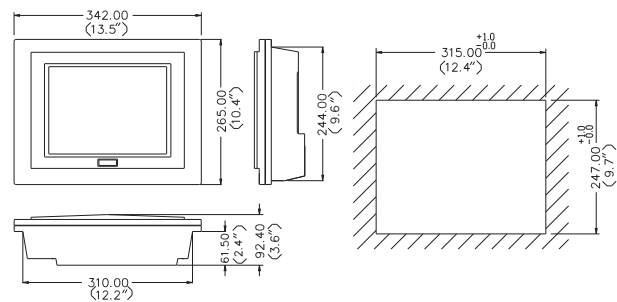


Dimensions

Unit: mm (inch)



WebOIT-650 Cutout Dimensions



WebOIT-1000 Cutout Dimensions

Ordering Information

- ❑ **WebOIT-650**
6.4" TFT Web-Enabled Operator Interface Terminal
- ❑ **ASTUDIO-WNT/PRO**
Advantech studio for eAutomation Professional Edition (Development + Runtime)
- ❑ **ASTUDIO-WNT/DEV**
Advantech studio for eAutomation Development Edition

- **Display:** 6.4" VGA DSTN LCD
- **Touch Screen:** Analog-Resistive Touch Screen
- **CPU:** Intel Pentium-266 MMX
- **DRAM:** 32 MB SO-DIMM SDRAM
- **Storage:** one type-II CompactFlash™ socket
- **I/O:** 2 serial ports (one configurable to RS-422/485), 1 parallel port
- **Ethernet:** 1 Ethernet port (10/100 Base-T)
- **Keyboard/Mouse:** PS/2 keyboard/mouse port
- **Expansion:** one 16-bit PC/104 slot
- **Power Input:** 24V_{DC}, 2.2 A maximal

Ordering Information

- ❑ **WebOIT-1000**
10" DSTN LCD Web-Enabled Operator Interface Terminal
- ❑ **ASTUDIO-WNT/PRO**
Advantech studio for eAutomation Professional Edition (Development + Runtime)
- ❑ **ASTUDIO-WNT/DEV**
Advantech Studio for eAutomation Development Edition

- **Display:** 10" VGA DSTN LCD
- **CPU:** 5 x 86-133 Processor
- **DRAM:** One 72-pin SIMM socket, 32MB SDRAM
- **Storage:** one 32MB Disk-on-Chip
- **I/O:** 2 serial ports (one configurable to RS-422/485), 1 parallel port
- **Ethernet:** 1 Ethernet port (10 Base-T)
- **Keyboard/Mouse:** PS/2 Keyboard/Mouse port
- **Watchdog Timer:** 1.6 sec
- **Housing:** Fire-resistant plastic front panel meets IP 65
- **Cooling System:** One 16 CFM fan on rear panel
- **Expansion:** one 16-bit PC/104 slot
- **Power Input:** 24 V_{DC}, 2.2A maximal
- **Dimensions (W x H x D):** 13.5" x 10.4" x 2.4"
(842 x 265 x 61.6 mm)
- **Weight:** 2.7 kg (5.9 lbs)

Note: All specifications are subject to change without notice