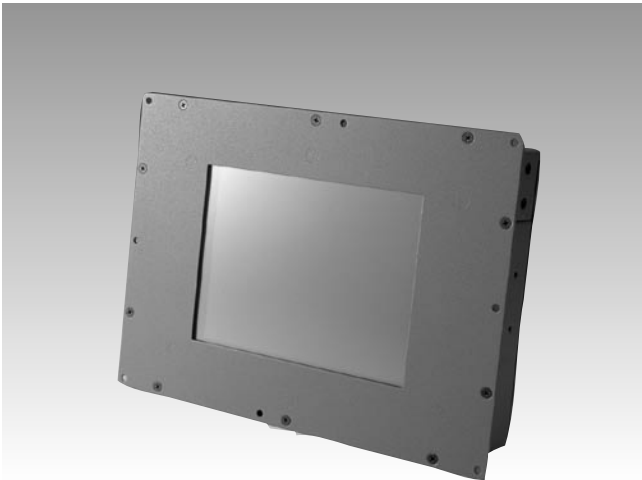


SPC-64C

6.4" TFT Rugged Graphic Operator Interface



Features

- Intel XScale® PXA255 400 MHz CPU and Windows® CE .NET 4.2 OS
- 6.4" color TFT LCD panel and resistive touch screen
- Built-in Tvia 5202G graphics chip w/ 8MB VRAM for great graphics performance
- Compact size with COM, USB, LAN, CF, PCMCIA, and audio interfaces
- IP65 front bezel
- Open-frame model: ideal design for inside-out mounting type
- Macromedia Flash Player & Java Virtual Machine (JVM) as options

Introduction

The SPC-64C integrates the Intel XScale PXA255 400 MHz processor and Windows CE .NET 4.2. It is designed to provide customers with a low power, higher performance embedded display platform with good networking and graphic performance. SPC-64C has a bright VGA (640 x 480) LCD screen and comes without front bezel for inside-out mounting, making it ideal for customers to design their own chassis or housing. SPC series supports Macromedia Flash Player and Java Virtual Machine (JVM) by project base. Colorful GUIs are easy to develop using Macromedia Flash and Java.

Specifications

System Kernel

- **CPU** Intel PXA255 400 MHz on board
- **OS** WinCE .NET 4.2 professional plus Eng. version
- **SDRAM** 64 MB (128 MB as option)
- **Flash** 32 MB (64/128 MB as option)
- **WDT** PXA255 internal
- **Boot Loader** 1 MB AMD Flash ROM for boot loader
- **RTC** HT1381 backup by 65 mAh rechargeable coin battery

Display

- **LCD** Primeview 18-bit TFT 640 x 480
- **Touchscreen** Resistive type
- **VGA Chip** TVIA 5202G VGA chip with 8 MB VRAM

I/O

- **RS-232** 1 x by DB-9 conn.
2 x by pin header inside the case
- **RS-485** 1 x by DB-9 connector
- **Ethernet** 1 x 10/100Base-T by RJ-45
- **USB** 2 x USB 1.1 host w/ type A conn.; 1 x USB 1.1 client w/type B conn
- **PCMCIA** 1 x type II slot
- **CompactFlash** 1 x type II slot
- **Digital I/O** 8 DI & 8 DO. Pin header inside the case.
- **GPIO** 8 GPIO. Pin header output the case.
- **Audio** 1 x line-out phone jack.
Mic-in, line-in, line-out by pin header inside the case

Power

- **Input Voltage Range** 10 ~ 28 V DC by phoenix conn.
- **Protection** Power surge protection and pole reversal protection by Polyfuse
- **SM bus** For smart battery, pin header inside the case
- **System Backup Battery** Rechargeable Li-ion coin battery 65 mAh for RTC
- **Power Switch** Slide type
Execute S/W reset through system configuration
- **Power Consumption** 8 W (normal mode w/o peripherals connected)

Mechanical

- **Dimension** Box size: 192.5 mm x 139 mm x 37.8 mm
Front bezel: 218.5 mm x 165 mm x 8 mm
- **Material** Front bezel is aluminum, others are made from SPCC
- **Mounting** Inside-out panel mount

Environment

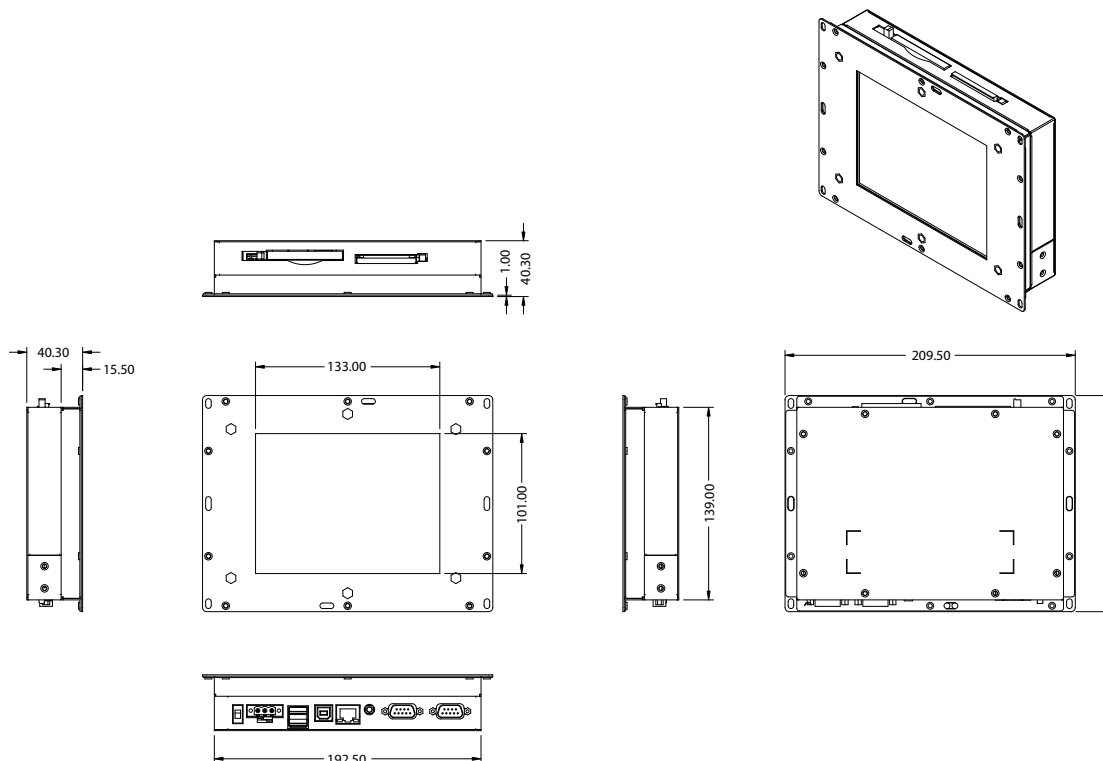
- **Operating Temp** 0 ~ 50° C
- **Storage Temp** -20 ~ 60° C
- **Water/Dust Resistance** IP65 front bezel
- **Certification** CE/FCC/UL

GUI firmware

- **Macromedia Flash Player support (project base)**
- **Java Virtual Machine support (project base)**

Dimensions

Unit: mm



Ordering information

- **SPC-64C-445CE1** Intel Xscale PXA255 400 MHz CPU, Windows CE .NET pre-installed with 6.4" color TFT LCD and resistive touchscreen
- **SPC-POWERSET** 60 W power adapter with 3-Pin power connector (Doesn't include the power cord, customer must purchase power cord separately)

Packing List

- SPC-64C
- Windows CE .NET end user license agreement (Windows CE .NET version)
- CD-ROM
 - 1) Readme.txt
 - 2) User's manual
 - 3) Datasheet
 - 4) Upgrade utility
 - 5) Microsoft ActiveSync Version 3.7 installation files (Windows CE .NET)
 - 6) Windows CE .NET 4.2 platforms SDK (Windows CE .NET)
- Warranty Card
- 1 x USB client ActiveSync cable
- 3-pin power connector