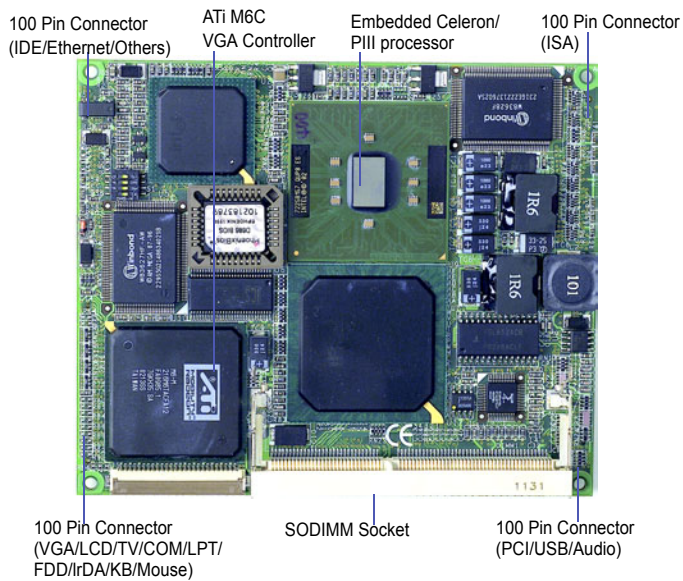


SOM-4473 Series

Pentium® III SOM-ETX w/VGA, LCD, Audio, Video & LAN



Features

- Embedded Intel® low power Pentium® III/Celeron™ processor
- Fanless, 0 ~ 60°C operation (SOM-4473FL-J0A1)
- ETX form factor
- Supports wake-up on LAN, modem
- Supports 24-bit LCD/ 2-Channel LVDS interface
- Supports dual independent display functions
- MPEG-2 decoder build-in for DVD playback

System

CPU	Embedded Intel® low power Celeron™ 400/Pentium® III-933
System Memory	SDRAM SO-DIMM x 1, Max. 512 MB (PC100/PC133)
2nd Cache Memory	256 KB on Celeron processor, 512 KB on Pentium III processor
Chipset	Intel® 815E
BIOS	AWARD 256 KB Flash BIOS
Watchdog Timer	1 - 256 sec, system reset
Expansion Interface	PCI/ISA

I/O

MIO	2 x EIDE (Ultra DMA33), 1 x FDD/LPT, 1 x K/B, 1 x Mouse, 2 x RS-232
IrDA	115 Kbps, IrDA 1.1 compliant
Audio	AC'97 compliant, Mic in, Line in, Line out, Speaker out
USB	4 USB ports, USB 1.1 compliant
LPC	PCI to ISA bridge with Winbond 83628 and 83629

Ethernet

Chipset	ICH2 integrated Ethernet Controller
Ethernet Interface	IEEE 802.3u 100 BASE-T Fast Ethernet

Display

Chipset	ATI M6 VGA Controller
Memory Size	8MB /16MB
Resolution	CRT Mode: 1400x1024@16bpp(60Hz), 1280x1024@16 bpp(60Hz), 1024x768@16 bpp(85Hz) LCD/Simultaneous Mode: 1400x1024@16bpp(60Hz), 1280x1024@16 bpp(60Hz), 1024x768@16 bpp(60Hz)
LCD Interface	4X AGP VGA/LCD interface Supports 24-bit LVDS panels up to SXGA resolution
LVDS	24-bit ANSI EIA/TIA-644, over 10 meters transmission
TV-out	Supports both NTSC/PAL

Mechanical and Environment

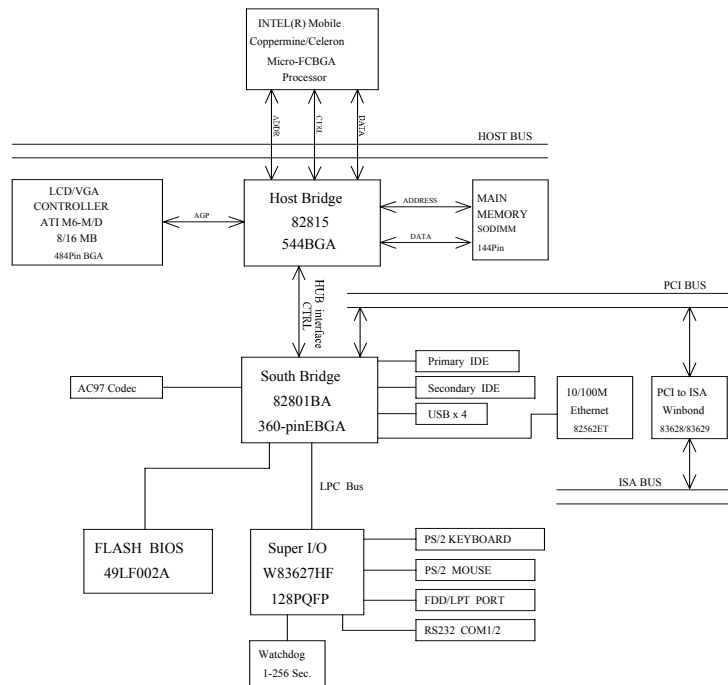
Dimensions (LxW)	95x114 mm (3.7"x4.5")
Power Supply Voltage	+5V+/-5%.
Power Requirements	Max.: 5V@5.2A(w/Pentium III 933) 5V@3.1A(w/Celeron 400) Typical: 5V@3.5A(w/Pentium III 933) 5V@3A(w/Celeron 400)
Operating Temperature	0~60° C (32~140° F) fanless operation Ethernet
Operating Humidity	0%~90% relative humidity, non-condensing

System On Module

Note: All specifications subject to change without notice

Updated: Aug/11/03 2010447300

Block Diagram



SOM-4473 Series

Ordering Information

Standard	
SOM-4473FL-J0A1	Intel® SOM-ETX Module w/ Celeron-400, VGA/LCD, Audio, LAN
SOM-4473FL-R0A1	Intel® SOM-ETX Module w/ PIII-933, VGA/LCD, Audio and LAN
SOM-DK4473FL-042	Windows CE.NET 4.2 Development Kit for SOM-4473FL
SOM-DB4400	SOM-ETX Development Board
Optional	
SOM-FANKIT-1000	Fan kit for SOM-ETX module
1961447301	Heatsink for SOM-4473FL
1961447302	Heatsink for SOM-4473FL with FAN