

# POS-761F Socket 370 SBC For POS Application Startup Manual

## Packing List

Before you begin installing your card, please make sure that the following materials have been shipped:

- 1 POS-761 all-in-one single board computer
- 2 serial port cables p/n: 1701100300
- 1 floppy cable p/n: 1701340602
- 1 UDMA/66 IDE flat cable p/n: 1701400453
- Audio Cable (POS-761FA) p/n: 1700160160
- 1 startup manual
- CD-ROM or disks for utility, drivers, and manual (in PDF format)

If any of these items are missing or damaged, contact your distributor or sales representative immediately.

Note 1: For detailed contents of the POS-761, please refer to the enclosed CD-ROM or disk (in PDF format).

Note 2: Acrobat Reader is required to view any PDF file. Acrobat Reader can be downloaded at: [www.adobe.com/Prodindex/acrobat/readstep.html](http://www.adobe.com/Prodindex/acrobat/readstep.html) (Acrobat is a trademark of Adobe.)

## Specifications

### Standard SBC Functions

- **CPU:** Socket 370 for Intel® Celeron®/Pentium III (Tualatin) processor
- **BIOS:** Award 256 KB Flash memory
- **Chipset:** VIA 8606/Twister VT82C686B
- **System memory:** Supports up to four EIDE devices. BIOS auto-detect, PIO Mode 3 or Mode 4, UDMA/33 transfer for 40-pin connector, UDMA66/100 transfer for 40-pin connector.

For more information on this and other Advantech products, please visit our website at:

<http://www.advantech.com>

<http://www.advantech.com/nc>

For technical support and service, please visit our support website at:

<http://service.advantech.com.tw/eservice/>

This manual is for the POS-761F series Rev. A1.

Part No. 2006076111  
Printed in Taiwan

2nd. Edition  
July, 2004

## Specifications (Continued)

- **FDD interface:** Supports up to two FDDs
- **Serial ports:** Four serial RS-232 ports, COM1, 3, 4: RS-232, COM2: RS-232/422/485
- **Parallel port:** Two parallel ports, supports SPP/EPP/ECP mode
- **Infrared port:** Shared with COM2. Transfer rates up to 1.15 Mbps
- **Keyboard/mouse connector:** Supports standard PC/AT keyboard and a PS/2 mouse
- **Power management:** Supports power saving modes including Normal/Standby/Suspend modes. APM 1.1 compliant
- **Watchdog timer:** 63 level timer intervals
- **USB:** Four Universal Serial Bus ports

### Solid State Disk

- Supports one 50-pin socket for CompactFlash™ card and one socket for one DiskOnChip®

### VGA/LCD Interface

- **Chipset:** VIA VT8606
- **Interface:** PCI interface, 64-bit engine
- **Display mode:** Flat panel displays up to 1280x1024 @ 16 bpp, 1024 x 768 @ 16 bpp, CRT monitors up to 1280x1024 @ 16 bpp, 1024 x 768 @ 16 bpp

### Ethernet Interface

- **Chipset:** Realtek 8139C
- **Ethernet interface:** PCI 10/100 Mbps Ethernet. IEEE 802.3 U protocol compatible
- **Connection:** On-board RJ-45 connector
- Built-in boot ROM

### Audio Function (optional)

- **Chipset:** VIA 82C686
- **Audio controller:** AC97 version 2.0 compliant interface
- **Audio interface:** Microphone in, line in, CD audio in, line out, speaker L and Speaker R

### Mechanical and Environmental

- **Dimensions (L x W):** 220 x 235 mm (8.7" x 9.25")
- **Power supply voltage:** +5 V ±5 %
- **Power requirements:** 5.7A @ 5V, 0.2A @ 12V typical, 256 MB DRAM, Pentium III 1.26G CPU)
- **Operating temperature:** 0 ~ 60° C
- **Weight:** 0.7 kg (weight of total package)

## Jumpers and Connectors

The board has a number of jumpers that allow you to configure your system to suit your application.

The table below lists the function of each of the jumpers and connectors.

### Jumpers

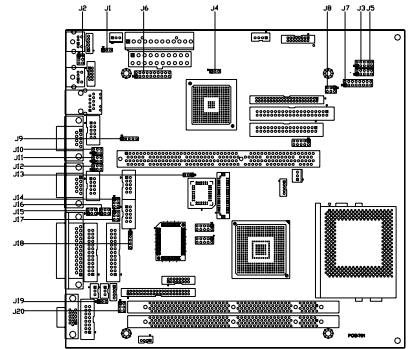
J1	Mouse and IRQ12 function select
J2	Setting CN9 DATSEL and CLKSEL function
J4	Clear CMOS
J5	DOC2K and DIO address select
J6	Front pane
J7	DIO connect
J8	CF card power
J9	SIR connect
J10,J11,J12	COM2 RS232/RS433/RS485 function
J13	Setting WatchDog trigger event
J14	COM3 and COM4 power select
J15	COM1 and COM2 pin 9 function select
J16	COM1 and COM2 power select
J17	COM3 and COM4 pin 9 function select
J19	Setting Enable backlight signal level
J20	Setting LCD Power

### Connectors

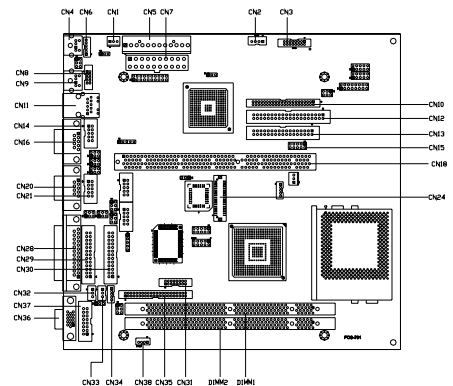
1.	CN1	System fan connect
2.	CN2	CD IN connect
3.	CN3	Audio connect
4.	CN4	First 6 Pins Mini DIM for KB
5.	CN5	AT Power connect
6.	CN6	Int. KB/MOUSE connect
7.	CN7	ATX Power connect
8.	CN8	Second LAN connect
9.	CN9	Second 6 Pins Mini DIM for Mouse
10.	CN10	Secondary IDE
11.	CN11	First LAN connect
12.	CN12	Primary IDE
13.	CN13	FDD connect
14.	CN14	COM2 connect
16.	CN16	COM2 D-TYPE 9 Pins connect
17.	CN17	USB1.0 3 & 4 connect
18.	CN18	PISA Slot
19.	CN19	CPU FAN
20.	CN20	COM1 D-TYPE 9 Pins connect
21.	CN21	COM1 connect
22.	CN22	COM4 connect
23.	CN24	LVDS connect
24.	CN25	COM3 connect
25.	CN26	USB2.0 1 & 2 connect
26.	CN27	USB2.0 3 & 4 connect
27.	CN28	LPT1 D-TYPE 25 Pins connect
28.	CN29	LPT1 connect
29.	CN30	LPT2 connect
30.	CN31	For LCD 36 Bits connect
31.	CN32	LCD Brightness controller connect
32.	CN33	LCD Contrast controller connect
33.	CN34	Backlight connect
34.	CN35	For LCD 18 Bits connect
35.	CN36	VGA D-TYPE 15 Pins connect
36.	CN37	VGA connect
37.	CN38	I2C Bus

38.	CN39	Compact Flash(Secondary IDE Master)
39.	BT1	BATTERY SOCKET
40.	DIMM1	SDRAM Socket
41.	DIMM2	SDRAM Socket
42.	U2	DOC2000 socket
43.	U26	Socket 370 for PIII CPU

## Locating Jumpers and Connectors



POS-761F Jumpers

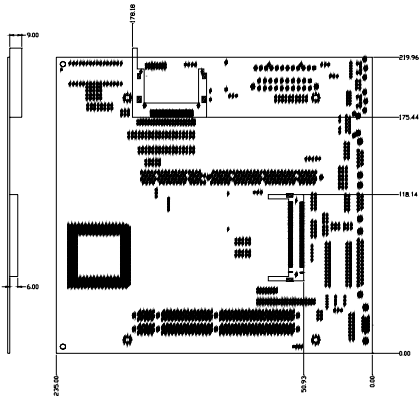


POS-761F Connectors (Component Side)

### CMOS clear (J4)

\*3.0 V battery on      Clear CMOS





Board Dimensions (Solder Side)