

# **PCM-9374**

**PCM-9374 3.5" SBC with VIA  
CPU, Audio, VGA/LCD & 2 LAN**

## **User's Manual**

## Copyright

This document is copyrighted, © 2003. All rights are reserved. The original manufacturer reserves the right to make improvements to the products described in this manual at any time without notice.

No part of this manual may be reproduced, copied, translated or transmitted in any form or by any means without the prior written permission of the original manufacturer. Information provided in this manual is intended to be accurate and reliable. However, the original manufacturer assumes no responsibility for its use, nor for any infringements upon the rights of third parties that may result from such use.

## Acknowledgements

Award is a trademark of Award Software International, Inc.

VIA is a trademark of VIA Technologies, Inc.

IBM, PC/AT, PS/2 and VGA are trademarks of International Business Machines Corporation.

Intel, Pentium, Celeron, and MMX are registered trademarks of Intel Corporation.

Microsoft Windows<sup>®</sup> is a registered trademark of Microsoft Corp.

RTL is a trademark of Realtek Semi-Conductor Co., Ltd.

ESS is a trademark of ESS Technology, Inc.

UMC is a trademark of United Microelectronics Corporation.

SMI is a trademark of Silicon Motion, Inc.

Creative is a trademark of Creative Technology LTD.

All other product names or trademarks are properties of their respective owners.

For more information on this and other Advantech products, please visit our websites at: **<http://www.advantech.com>**

**<http://www.advantech.com/eplatform>**

For technical support and service, please visit our support website at:

**<http://www.advantech.com/support>**

This manual is for the PCM-9374.

Part No. 2006937410

1st Edition

Printed in Taiwan

July 2005

## Packing List

---

Before you begin installing your card, please make sure that the following materials have been shipped:

- 1 PCM-9374 SBC
- 1 Startup manual
- 1 Utility CD
- 1 mini jumper pack p/n: 9689000002
- 1 Audio cable p/n: 1703100152
- 1 IDE 44 pin cable p/n: 1701440351
- 1 USB 2 port Cable p/n: 1703100121
- 1 Parallel port cable p/n: 1700260250
- 1 Keyboard/Mouse cable p/n: 1700060202
- 1 COM port cable p/n: 1701140201
- 1 ATX power cable 20P-12P cable p/n: 1700000265

If any of these items are missing or damaged, contact your distributor or sales representative immediately.

### Model No. List

### Description

PCM-9374F-J0A1	3.5" SBC w/VIA Eden 400MHz CPU,VGA/ LCD,LVDS,2LAN,Audio and SSD
PCM-9374F-M0A1	Same as PCM-9374F-J0A1,but with Eden 667MHz CPU
PCM-9374F-S1A1	Same as PCM-9374F-J0A1,but with C3-LP 1GHz CPU

## **Additional Information and Assistance**

---

1. Visit the Advantech web site at **www.advantech.com** where you can find the latest information about the product.
2. Contact your distributor, sales representative, or Advantech's customer service center for technical support if you need additional assistance.

Please have the following information ready before you call:

- Product name and serial number
- Description of your peripheral attachments
- Description of your software (operating system, version, application software, etc.)
- A complete description of the problem
- The exact wording of any error messages

# FCC

*This device complies with the requirements in part 15 of the FCC rules: Operation is subject to the following two conditions:*

- 1. This device may not cause harmful interference, and*
- 2. This device must accept any interference received, including interference that may cause undesired operation*

*This equipment has been tested and found to comply with the limits for a Class A digital device, pursuant to Part 15 of the FCC Rules. These limits are designed to provide reasonable protection against harmful interference when the equipment is operated in a commercial environment. This equipment generates, uses, and can radiate radio frequency energy and, if not installed and used in accordance with the instruction manual, may cause harmful interference to radio communications. Operation of this device in a residential area is likely to cause harmful interference in which case the user will be required to correct the interference at his/her own expense. The user is advised that any equipment changes or modifications not expressly approved by the party responsible for compliance would void the compliance to FCC regulations and therefore, the user's authority to operate the equipment.*

**Caution!**



**Achtung!**

*There is a danger of a new battery exploding if it is incorrectly installed. Do not attempt to recharge, force open, or heat the battery. Replace the battery only with the same or equivalent type recommended by the manufacturer. Discard used batteries according to the manufacturer's instructions*



# Contents

<b>Chapter 1</b>	<b>Introduction .....</b>	<b>2</b>
1.1	Introduction .....	2
1.2	Features .....	2
1.3	Specifications .....	2
1.3.1	Standard 3.5" Biscuit SBC Functions .....	2
1.3.2	VGA/LVDS Interface .....	3
1.3.3	Ethernet Interface .....	4
1.3.4	Audio Function .....	4
1.3.5	Mechanical and Environmental .....	4
1.4	Board layout: dimensions .....	5
	Figure 1.2:Board layout: Dimensions(Solder Side).....	6
<b>Chapter 2</b>	<b>Installation .....</b>	<b>8</b>
2.1	Jumpers.....	8
2.1.1	Jumper Location .....	9
2.1.2	Jumper Settings.....	10
	Table 2.1:Jumpers.....	10
	Table 2.2:CMOS clear (J2).....	12
2.2	Connectors.....	13
	Table 2.3:Connectors.....	13
2.3	Locating Connectors .....	14
	Figure 2.1:Connectors (component side).....	14
	Figure 2.2:Connectors (solder side).....	15
2.4	Setting Jumpers .....	16
2.5	Installing SO-DIMM .....	17
2.6	IDE, CDROM hard drive connector (CN12) .....	17
	2.6.1 Connecting the hard drive.....	18
2.7	Solid State Disk.....	18
	2.7.1 CompactFlash (CN11).....	18
2.8	Parallel port connector (CN7) .....	18
2.9	Keyboard and PS/2 mouse connector (CN16) .....	18
2.10	Power & HDD LED Connector (CN13) .....	19
	2.10.1 Power & HDD LED Connector(CN13).....	19
	2.10.2 Power Reset button (S1) .....	19
2.11	Power connectors (CN1) .....	19
	2.11.1 Main power connector, +5 V, +12 V (CN1).....	19
	2.11.2 Fan power supply connector (CN5).....	19
2.12	Audio interfaces (CN21) .....	19
	2.12.1 Audio connector (CN21) .....	19
2.13	COM port connector (CN6,CN9).....	19
	2.13.1 COM2 RS-232/422/485 setting (J4/J5/J6).....	20

2.14	VGA/LCD/LVDS interface connections .....	20
2.14.1	CRT display connector (CN18).....	20
2.14.2	TFT LCD panel connector(CN19).....	20
2.14.3	LVDS LCD panel connector (CN17) .....	20
2.15	Ethernet configuration(CN22, CN23).....	21
2.15.1	100Base-T/1000Base-T connector .....	21
2.15.2	Network boot(Depends on Ethernet Controller).....	21
2.16	Watchdog timer configuration .....	21
2.17	USB connectors (CN14,CN15, CN25) .....	21
2.18	GPIO (General Purpose Input Output) (CN4).....	22
<b>Chapter 3</b>	<b>Chipset Software Installation Utility .....</b>	<b>24</b>
3.1	Before you begin .....	24
3.2	Introduction .....	24
3.3	Installing VIA CLE266 the Utility.....	25
<b>Chapter 4</b>	<b>Award BIOS Setup.....</b>	<b>32</b>
4.1	Introduction .....	32
4.1.1	CMOS RAM Auto-backup and Restore .....	32
4.2	Entering Setup .....	32
4.3	Standard CMOS Setup .....	33
4.4	Advanced BIOS Features .....	33
4.4.1	Virus Warning.....	33
4.4.2	L1 & L2 Cache .....	33
4.4.3	Quick Power On Self Test .....	33
4.4.4	First/Second/Third/Other Boot Device.....	33
4.4.5	Swap Floppy Drive .....	33
4.4.6	Boot UP Floppy Seek .....	33
4.4.7	Boot Up NumLock Status.....	33
4.4.8	Gate A20 Option.....	34
4.4.9	Typematic Rate Setting.....	34
4.4.10	Typematic Rate (Chars/Sec).....	34
4.4.11	Typematic Delay (msec).....	34
4.4.12	Security Option .....	34
4.4.13	APIC Mode.....	34
4.4.14	MPS Version Control For OS.....	34
4.5	Integrated Peripherals.....	35
4.5.1	IDE Master/Slave PIO/UDMA Mode.....	35
4.5.2	On-Chip Secondary PCI IDE.....	35
4.5.3	USB Controller .....	35
4.5.4	USB Keyboard/Mouse Support .....	35
4.5.5	AC97 Audio.....	35
4.5.6	Init Display First.....	35
4.5.7	Onboard LAN Control .....	35
4.5.8	IDE HDD Block Mode .....	35

	4.5.9	Onboard FDC Controller .....	35
	4.5.10	Onboard Serial Port .....	35
	4.5.11	UART Mode Select .....	36
	4.5.12	RxD, TxD Active .....	36
	4.5.13	IR Transmission Delay .....	36
	4.5.14	UR2 Duplex Mode .....	36
	4.5.15	Onboard Parallel Port .....	36
	4.5.16	Parallel Port Mode .....	36
	4.5.17	EPP Mode Select .....	36
	4.5.18	ECP Mode Use DMA .....	36
4.6		Power Management Setup .....	37
	4.6.1	Power-Supply Type .....	37
	4.6.2	ACPI function .....	37
	4.6.3	Power Management .....	37
	4.6.4	Video Off In Suspend .....	37
	4.6.5	Modem Use IRQ .....	37
	4.6.6	HDD Power Down .....	37
	4.6.7	Soft-Off by PWR-BTTN .....	37
	4.6.8	CPU THRM-Throttling .....	38
	4.6.9	PowerOn By LAN .....	38
	4.6.10	PowerOn By Modem .....	38
	4.6.11	PowerOn By Alarm .....	38
	4.6.12	Primary IDE 0 (1) and Secondary IDE 0 (1) .....	38
	4.6.13	FDD, COM, LPT PORT .....	38
	4.6.14	PCI PIRQ [A-D]# .....	38
4.7		PnP/PCI Configurations .....	38
	4.7.1	PnP OS Installed .....	38
	4.7.2	Reset Configuration Data .....	38
	4.7.3	Resources controlled by: .....	38
	4.7.4	PCI/VGA Palette Snoop .....	39
4.8		Password Setting .....	39
4.9		Save & Exit Setup .....	39
4.10		Exit Without Saving .....	40
<b>Chapter</b>	<b>5</b>	<b>PCI SVGA/LCD Setup .....</b>	<b>42</b>
	5.1	Introduction .....	42
	5.1.1	CMOS setting for panel type .....	42
	5.1.2	Display type .....	42
	5.2	Connections to Standard LCD .....	42
	5.3	Installation of the SVGA Driver .....	44
	5.3.1	Installation of Windows 98/2000 .....	44
	5.4	Further Information .....	49
<b>Chapter</b>	<b>6</b>	<b>Audio Setup .....</b>	<b>52</b>
	6.1	Introduction .....	52
	6.2	Driver installation .....	52

	6.2.1	Before you begin.....	52
	6.2.2	Windows 98 drivers.....	53
<b>Chapter</b>	<b>7</b>	<b>Ethernet Interface .....</b>	<b>56</b>
	7.1	Introduction .....	56
	7.2	Installation of Ethernet driver .....	56
	7.2.1	Installation for Windows 98 .....	56
	7.2.2	Installation for Windows 2000 .....	59
	7.3	Further information .....	63
<b>Appendix</b>	<b>A</b>	<b>Programming GPIO &amp; Waterdog Timer ....</b>	<b>66</b>
	A.1	Supported GPIO Register.....	66
	A.1.1	GPIO Registers .....	66
	A.1.2	GPIO Example program-1 .....	67
	A.2	Watchdog programming.....	69
<b>Appendix</b>	<b>B</b>	<b>Pin Assignments .....</b>	<b>72</b>
	B.1	CPU Fan Power Connector (CN5).....	72
	B.2	Audio Connector (CN21).....	73
	B.3	Main Power Connector (CN1) .....	73
	B.4	Keyboard and PS/2 Mouse Connector (CN16).....	74
	B.5	IDE Hard Drive Connector (CN12) .....	75
	B.6	Parallel Port Connector (CN7).....	76
	B.7	Power & HDD LED Connector (CN13) .....	77
	B.8	USB Connector (CN14,CN15) .....	77
	B.9	LCD Inverter Backlight Connector (CN20) .....	78
	B.10	LVDS Connector (CN17).....	79
	B.11	COM2 RS232/422/485 series port (CN9).....	80
	B.12	CompactFlash Card Connector (CN11) .....	81
	B.13	IR connector (CN8).....	82
<b>Appendix</b>	<b>C</b>	<b>System Assignments .....</b>	<b>84</b>
	C.1	System I/O Ports.....	84
		Table C.1: System I/O ports .....	84
	C.2	1st MB memory map.....	85
		Table C.2: 1st MB memory map .....	85
	C.3	DMA channel assignments.....	85
		Table C.3: DMA channel assignments .....	85
	C.4	Interrupt assignments .....	86
		Table C.4: Interrupt assignments .....	86
<b>Appendix</b>	<b>D</b>	<b>AT/ATX Power setting .....</b>	<b>88</b>
	D.1	Introduction .....	88
		Table D.1: Power Connector .....	88
<b>Appendix</b>	<b>E</b>	<b>Mechanical Drawings.....</b>	<b>92</b>
	E.1	Mechanical Drawings.....	92

Figure E.1:PCM-9374 Mech Drawing(Component) .... 92  
Figure E.2:PCM-9374 Mech Drawing (Solder Side) ... 93



## General Information

This chapter gives background information on the PCM-9374.

Sections include:

- Introduction
- Features
- Specifications
- Board layout and dimensions

# Chapter 1 Introduction

## 1.1 Introduction

---

The PCM-9374 is a solid, best cost and performance 3.5" SBC (Single Board Computing) geared to satisfy the needs of various industry computing equipment, communication, gaming and medical applications that require flat panel support, the digital display using a LVDS interface and two Ethernet ports.

To represent the perfect choice for those who want superior performance like Pentium III grade for various low-power embedded applications, PCM-9374 uses VIA CPU and CLE266 chipset in conjunction with flexible system memory of DDR 200/266MB by one SODIMM socket.

The PCM-9374 provides a convenient connector layout for easy assembly, multiple I/O enriching the board's connectivity of data and communication, includes two 10/100Mbps Ethernet, Five Universal Serial Bus (USB) 2.0 and two serial ports and PC/104 Plus connector for easier extending and system integration.

## 1.2 Features

---

- Embedded low power VIA Eden 400/667MHz or VIA C3-LP 1GHz processor
- Fanless, 0 ~ 60°C operation (Eden 400/667)
- Supports dual Ethernet
- Supports dual display, CRT + LCD (TTL) or LVDS only
- Supports 5 USB 2.0 port
- Support Single +5V power in CUP core board

## 1.3 Specifications

---

### 1.3.1 Standard 3.5" Biscuit SBC Functions

- **CPU:** Embedded low power VIA Eden 400/667 MHz or VIA C3-LP 1GHz processor  
     VIA Eden 400MHz PCM-9374F-J0A1  
     VIA Eden 667MHz PCM-9374F-M0A1  
     VIA C3-LP 1GHz PCM-9374F-S1A1
- **System Memory:** One 200 pin SODIMM socket, support DDR200/266 SDDRAM
- **2nd Cache Memory:** 64KB on the Eden processor
- **System Chipset:** VIA CLE266 100/133MHz FSB
- **BIOS:** Award 2Mbit Flash BIOS
- **Watchdog timer:** 1-62 sec, 62 level timer intervals system reset
- **Expansion Interface:** PC/104 Plus
- **Battery:** Lithium 3V/210 mA
- **Power management:** Supports ACPI 1.0B
- **Enhanced IDE interface:** One channels supports up to two EIDE devices. BIOS auto-detect, PIO Mode 3 or Mode 4, supports UDMA 33 mode
- **Serial ports:** Two serial RS-232 ports, COM1: RS-232, COM2: RS-232/422/485
- **Parallel port:** One parallel port, supports SPP/EPP/ECP mode
- **Keyboard/mouse connector:** Supports one standard PC/AT keyboard and a PS/2 mouse
- **Audio:** Support AC97 Audio stereo sound
- **USB:** Five USB 2.0 compliant universal serial bus ports
- **Solid State Disk (SSD)** Supports one 50-pin socket for CFC type I/II

### 1.3.2 VGA/LVDS Interface

- **Chipset:** VIA CLE266 chipset with the SMA(Optimized Shared Memory Architecture) up to 64MB frame buffer using system memory.
- **Memory Size:** 8/16/32/64MB
- **Resolution:**  
     **CRT Mode:** 1400x1050@32bpp(85Hz)  
     **LCD Mode:** 1600x1200@32bpp(60Hz)
- **LCD Interface:** Support 24-bit TTL interface for TFT LCD
- **LVDS:** Support 24-bit LVDS interface
- **TV-Out(optional):** N/A
- **Display Mode:** CRT+LCD, or LVDS only(\*)  
     \*:need to change BIOS for LVDS mode.

### 1.3.3 Ethernet Interface

- **Chipset:** RealTek RTL8100
- **Speed:** 10/100Mbps
- **Interface:** One RJ45 connector, one box header cable
- **Standard:** IEEE 802.3u 100 BASE-T Fast Ethernet compatible Built-in boot ROM in Flash BIOS

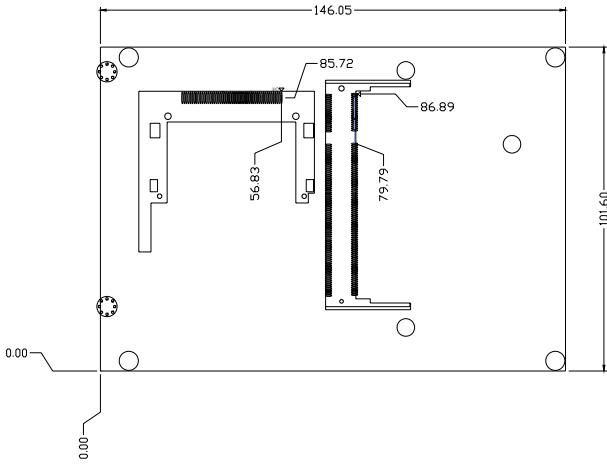
### 1.3.4 Audio Function

- **Chipset:** Realtek ALC202
- **Audio controller:** Support AC97 3D Audio stereo sound
- **Audio interface:** line in, line out, Microphone in

### 1.3.5 Mechanical and Environmental

- **Dimensions:** 145 x 102 mm (5.9"x 4.2")  
Mechanical Drawing (dxf file) is available.
- **Power Supply Type:** AT/ATX
- **Power Requirement:** +5V  $\pm 5\%$ , +12V  $\pm 5\%$ (Optional), +5V standby for ATX mode
- **Power Consumption:**
  - Max: 2.8A@ +5V  
(with 512MB, Eden 400MHz CPU)
  - Max: 3.3A@ +5V  
(with 512MB, Eden 667MHz CPU)
  - Max: 4.3A@ +5V  
(with 512MB, VIA C3-LP 1GHz CPU)
- **Operating temperature:** 0 ~ 60°C (32 ~ 140°F)
- **Operating Humidity:** 0% ~ 90% relative humidity, non-condensing
- **Weight:** 0.85 kg (reference weight of total package)





**Figure 1.2: Board layout: Dimensions(Solder Side)**

## **Installation**

This chapter explains the setup procedures of the PCM-9374 hardware, including instructions on setting jumpers and connecting peripherals, switches and indicators. Be sure to read all safety precautions before you begin the installation procedure.

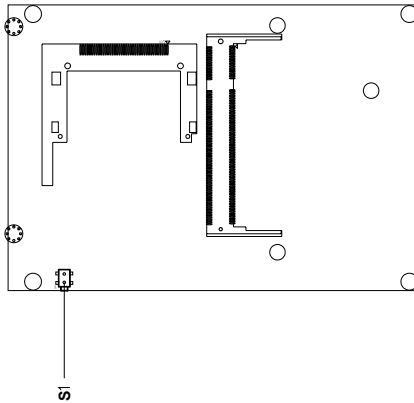
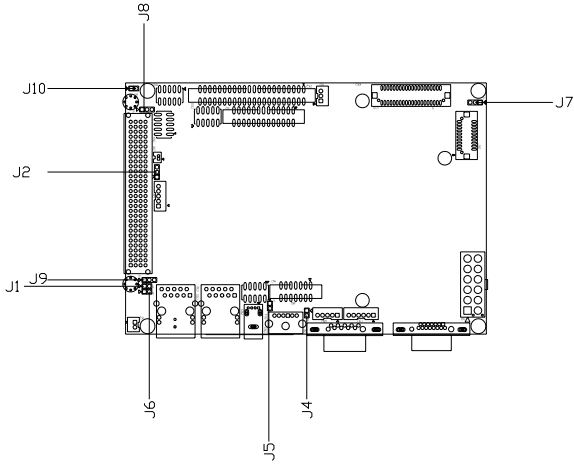
# Chapter 2 Installation

## 2.1 Jumpers

---

The PCM-9374 has a number of jumpers that allow you to configure your system to suit your application. The table below lists the functions of the various jumpers.

## 2.1.1 Jumper Location



**Table 2.1: Jumpers**

Label	Function
J1	AT/ATX Setting(1)
J2	Clear CMOS
J4/J5/J6	COM2 Setting
J7	LVDS Power
J8	Audio Power Source
J9	PCI VIO Setting
J10	AT/ATX Setting(2)
S1	Reset Button

### 2.1.2 Jumper Settings

J1 AT/ATX Setting(1)

J1	AT/ATX Setting(1)
<b>Part Number</b>	1653003101
<b>Description</b>	PIN HEADER 2*1P 180D (M) SQUARE 2.0mm
<b>Setting</b>	<b>Function</b>
J1(1-2)	AT Power
None	ATX Power

both J1 and J10 need to be installed while setting up AT or ATX power mode.

J2 Clear CMOS

J2	Clear CMOS
<b>Part Number</b>	1653003101
<b>Description</b>	PIN HEADER 3*1P 180D (M) SQUARE 2.0mm
<b>Setting</b>	<b>Function</b>
1-2	Normal
2-3	Clear CMOS

#### J4/J5/J6 COM2 Setting

J4/J5/J6	COM2 Setting
<b>Part Number</b>	1653003101
<b>Description</b>	PIN HEADER 2*1P 180D (M) SQUARE 2.0mm
<b>Setting</b>	<b>Function</b>
J6(1-2)	RS232
J5(1-2)	RS422
J4(1-2)	RS485

#### J7 LVDS Power

J7	LVDS Power
<b>Part Number</b>	1653003101
<b>Description</b>	PIN HEADER 3*1P 180D (M) SQUARE 2.0mm
<b>Setting</b>	<b>Function</b>
1-2	+5V
2-3	+3.3V

#### J8 Audio Power Selector

J8	Audio Power Selector
<b>Part Number</b>	1653003101
<b>Description</b>	PIN HEADER 3*1P 180D (M) SQUARE 2.0mm
<b>Setting</b>	<b>Function</b>
1-2	Audio Power from 12V
2-3	Audio Power from 5V

#### J9 PCI VIO Setting

J9	PCI VIO Setting
<b>Part Number</b>	1653003101
<b>Description</b>	PIN HEADER 3*1P 180D (M) SQUARE 2.0mm
<b>Setting</b>	<b>Function</b>
1-2	+5V
2-3	+3.3V

J10	AT/ATX Setting(2)
J10	AT/ATX Setting(2)
<b>Part Number</b>	1653003101
<b>Description</b>	PIN HEADER 2*1P 180D (M) SQUARE 2.0mm
<b>Setting</b>	<b>Function</b>
J10(1-2)	AT Power
None	ATX Power

\*: both J1 and J10 need to be installed while setting up AT or ATX power mode.

#### 2.1.2.6 Clear CMOS (S1)

**Warning!** *To avoid damaging the computer, always turn off the power supply before setting “Clear CMOS.” Before turning on the power supply, set the jumper back to “3.0 V Battery On.”*



This jumper is used to erase CMOS data and reset system BIOS information.

The procedure for clearing CMOS is:

1. Turn off the system.
2. Short pin 2 and pin 3.
3. Return jumper to pins 1 and 2.
4. Turn on the system. The BIOS is now reset to its default setting

**Table 2.2: CMOS clear (J2)**

Condition	Result
unpressed*	Normal
pushed	Clear CMOS

\* default setting

## 2.2 Connectors

---

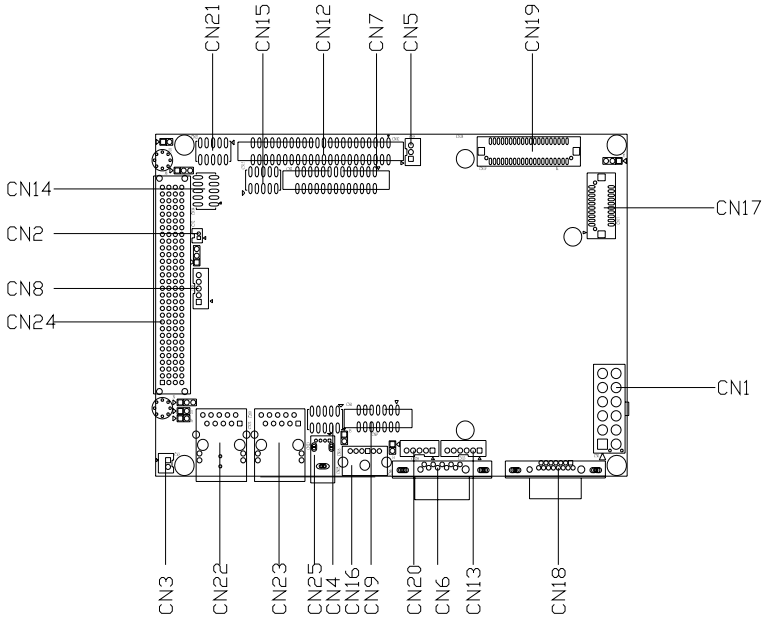
On-board connectors link the PCM-9374 to external devices such as hard disk drives, a keyboard, or floppy drives. The table below lists the function of each of the board's connectors.

***Table 2.3: Connectors***

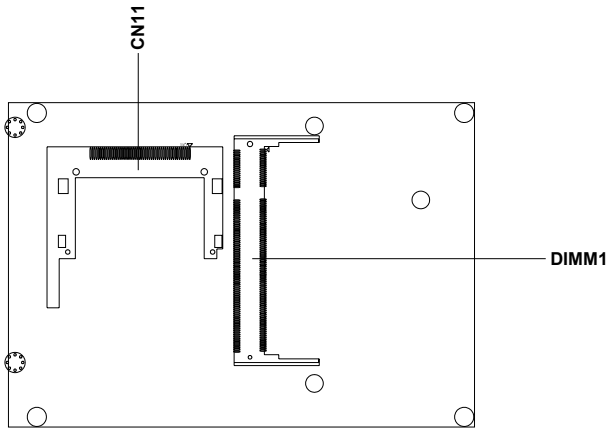
Label	Function
CN1	ATX Power
CN2	Battery Connector
CN3	Power Switch
CN4	GPIO
CN5	Fan Power
CN6	COM1
CN7	Print Port
CN8	SIR Connector
CN9	COM2
CN11	CF Connector
CN12	Primary IDE
CN13	HD LED & Power LED
CN14	USB Connector(Internal)
CN15	USB Connector(Internal)
CN16	Keyboard/Mouse Connector
CN17	LVDS Connector
CN18	CRT Connector
CN19	LCD Connector
CN20	Inverter Power
CN21	Audio Connector
CN22	LAN Connector
CN23	LAN Connector
CN24	PC104-PCI+Connector
CN25	USB Connector(External)

## 2.3 Locating Connectors

---



*Figure 2.1: Connectors (component side)*

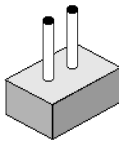


**Figure 2.2: Connectors (solder side)**

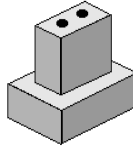
## 2.4 Setting Jumpers

---

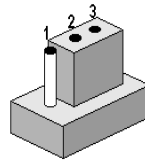
You may configure your card to match the needs of your application by setting jumpers. A jumper is a metal bridge used to close an electric circuit. It consists of two metal pins and a small metal clip (often protected by a plastic cover) that slides over the pins to connect them. To “close” a jumper, you connect the pins with the clip. To “open” a jumper, you remove the clip. Sometimes a jumper will have three pins, labeled 1, 2 and 3. In this case you would connect either pins 1 and 2, or 2 and 3.



open

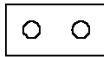


closed



closed 2-3

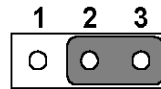
The jumper settings are schematically depicted in this manual as follows:.



open



closed



closed 2-3

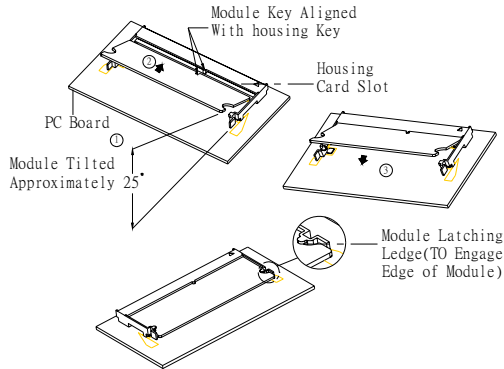
A pair of needle-nose pliers may be helpful when working with jumpers.

If you have any doubts about the best hardware configuration for your application, contact your local distributor or sales representative before you make any changes.

Generally, you simply need a standard cable to make most connections.

## 2.5 Installing SO-DIMM

---



The procedures for installing SODIMMs are described below. Please follow these steps carefully. You can install SDRAM memory modules using 200-pin SODIMMs (Small Outline Dual In-line Memory Modules).

1. Ensure that all power supplies to the system are switched off.
2. Tilt the SODIMM card approximately 25° above the board, and move it in the direction of the housing card slot. Make sure that the key in the module and the key in the housing are aligned.
3. Push the module into the socket until the module bottoms. There should be a slight insertion force to engage the module into the contacts.

## 2.6 IDE, CDROM hard drive connector (CN12)

---

The board provides 1 IDE channels which you can attach up to two Enhanced Integrated Device Electronics hard disk drives or CDROM to the board's internal controller. Its IDE controller uses a PCI interface. This advanced IDE controller supports faster data transfer, PIO mode 3, mode 4 and up to UDMA/33.

### **2.6.1 Connecting the hard drive**

Connecting drives is done in a daisy-chain fashion. This package includes One 44PIN IDE cable that can connect to 1.8" and 2.5" drives.

1. Connect one end of the cable to Hard Drive connector. Make sure that the red (or blue) wire corresponds to pin 1 on the connector, which is labeled on the board (on the right side).
2. Plug the other end of the cable into the Enhanced IDE hard drive, with pin 1 on the cable corresponding to pin 1 on the hard drive. (See your hard drive's documentation for the location of the connector.)

If desired, connect a second drive as described above.

Unlike floppy drives, IDE hard drives can connect to either end of the cable. If you install two drives, you will need to set one as the master and one as the slave by using jumpers on the drives. If you install only one drive, set it as the master.

## **2.7 Solid State Disk**

---

The board provides a CompactFlash™ card type I/II socket .

### **2.7.1 CompactFlash (CN11)**

The CompactFlash card shares a secondary IDE channel which can be enabled/disabled via the BIOS settings.

## **2.8 Parallel port connector (CN7)**

---

Normally, the parallel port is used to connect the card to a printer. The board includes a multi-mode (ECP/EPP/SPP) parallel port accessed via CN13 and a 26-pin flat-cable connector. You will need an adapter cable if you use a traditional DB-25 connector. The adapter cable has a 26-pin connector on one end, and a DB-25 connector on the other.

The parallel port is designated as LPT1, and can be disabled or changed to LPT2 or LPT3 in the system BIOS setup.

## **2.9 Keyboard and PS/2 mouse connector (CN16)**

---

The board provides a keyboard connector that supports both a keyboard and a PS/2 style mouse. In most cases, especially in embedded applications, a keyboard is not used. If the keyboard is not present, the standard PC/AT BIOS will report an error or fail during power-on self-test (POST)

after a reset. The board's BIOS standard setup menu allows you to select "All, But Keyboard" under the "Halt On" selection. This allows no-keyboard operation in embedded system applications, without the system halting under POST.

## **2.10 Power & HDD LED Connector (CN13)**

---

Next, you may want to install external switches to monitor and control the board. These features are optional: install them only if you need them.

The Power & HDD LED connector is 6-pin Wafer box connector. It provides connections for a power and hard disk access indicator.

### **2.10.1 Power & HDD LED Connector(CN13)**

The HDD LED indicator for hard disk access is an active low signal (24 mA sink rate). Power supply activity LED indicator.

### **2.10.2 Power Reset button (S1)**

Momentarily pressing the reset button will activate a reset. The switch should be rated for 10 mA, 5 V.

## **2.11 Power connectors (CN1)**

---

### **2.11.1 Main power connector, +5 V, +12 V (CN1)**

Supplies main power to the PCM-9374(+5 V), and to devices that require +12 V.

### **2.11.2 Fan power supply connector (CN5)**

Provides +5V power supply to CPU cooling fan.

## **2.12 Audio interfaces (CN21)**

---

### **2.12.1 Audio connector (CN21)**

The board provides all major audio signals on a 10-pin cable connector, These audio signals include Microphone in (mono), Line in (stereo) and Line out (stereo).

## **2.13 COM port connector (CN6,CN9)**

---

The board provides two serial ports (COM1: RS-232; COM2: RS-232/422/485) in one DB-9 connector (COM1) and one 14-pin dual-inline,

male header. It provides connections for serial devices (a mouse, etc.) or a communication network. You can find the pin assignments for the COM port connector in Appendix C.

### 2.13.1 COM2 RS-232/422/485 setting (J4/J5/J6)

COM2 can be configured to operate in RS-232, RS-422, or RS-485 mode. This is done via J4/J5/J6

J4/J5/J6	COM2 Setting
<b>Part Number</b>	1653003101
<b>Description</b>	PIN HEADER 2*1P 180D (M) SQUARE 2.0mm
<b>Setting</b>	<b>Function</b>
J6(1-2)	RS232
J5(1-2)	RS422
J4(1-2)	RS485

## 2.14 VGA/LCD/LVDS interface connections

The board's PCI SVGA interface can drive conventional CRT displays and is capable of driving a wide range of flat panel displays, including passive LCD and active LCD displays. The board has three connectors to support these displays: one for standard CRT VGA monitors as well as one for TFT flat panel display (by TTL signal), or one for LVDS type LCD panels independently.

### 2.14.1 CRT display connector (CN18)

The CRT display connector is a 15-pin D-SUB connector used for conventional CRT displays.

### 2.14.2 TFT LCD panel connector(CN19)

CN19 consists of a 40-pin connector which can support a 24-bit TFT LCD panel by TTL signal. It is Hirose's product no. DF13A-40DP-1.25V

### 2.14.3 LVDS LCD panel connector (CN17)

The board supports 24-bit LVDS LCD panel displays.

## **2.15 Ethernet configuration(CN22, CN23)**

---

The board is equipped with a high performance 32-bit PCI-bus Ethernet interface which is fully compliant with IEEE 802.3U 10/100Mbps standards. It is supported by all major network operating systems.

### **2.15.1 100Base-T/1000Base-T connector**

100Base-T connections are made via the on-board RJ-45 connector

### **2.15.2 Network boot(Depends on Ethernet Controller)**

The Network Boot feature can be utilized by incorporating the Boot ROM image files for the appropriate network operating system. The Boot ROM BIOS files are included in the system BIOS, which is on the utility CD disc.

## **2.16 Watchdog timer configuration**

---

An on-board watchdog timer reduces the chance of disruptions which EMP (electro-magnetic pulse) interference can cause. This is an invaluable protective device for standalone or unmanned applications. Setup involves one jumper and running the control software (refer to Appendix A).

## **2.17 USB connectors (CN14,CN15, CN25)**

---

The board provides up to five USB (Universal Serial Bus) ports. This gives complete Plug and Play, and hot attach/detach for up to 127 external devices. The USB interfaces comply with USB specification Rev. 2.0 which supports 480Mbps transfer rate, and are fuse protected.

The USB interface is accessed through one 5 x 2-pin flat-cable connectors, CN14 and CN15. You will need an adapter cable if you use a standard USB connector. The adapter cable has a 5 x 2-pin connector on one end and a USB connector on the other.

Also, There's one USB2.0 jack on CN25 for convenient connecting USB device.

The USB interfaces can be disable in the system BIOS setup.

## **2.18 GPIO (General Purpose Input Output) (CN4)**

---

The board supports 10-bit GPIO through GPIO connector. The 10 digital in- and out-puts can be programmed to read or control devices, with input or out- put defined. The default setting is 5 bits input and 5 bits output.

CHAPTER  
**3**

**Chipset Software  
Installation Utility**

# Chapter 3 Chipset Software Installation Utility

## 3.1 Before you begin

---

To facilitate the installation of the enhanced display device drivers and utility software, you should read the instructions in this chapter carefully before you attempt installation. The device drivers for the PCM-9374 board are located on the software installation CD. The auto-run function of the driver CD will guide and link you to the utilities and device drivers under a Windows system.

*Note:*        *The files on the software installation CD are compressed. Do not attempt to install the drivers by copying the files manually. You must use the supplied SETUP program to install the drivers.*

Before you begin, it is important to note that most display drivers need to have the relevant software application already installed in the system prior to installing the enhanced display drivers. In addition, many of the installation procedures assume that you are familiar with both the relevant software applications and operating system commands. Review the relevant operating system commands and the pertinent sections of your application software's user's manual before performing the installation.

## 3.2 Introduction

---

The utility installs to the target system the Windows INF files that outline to the operating system how the chipset components will be configured. This is needed for the proper functioning of the following features:

- Core PCI and ISA PnP services.
- IDE Ultra ATA 33 interface support
- USB 2.0 support
- Integrates superior video features. These include filtered scaling of 720 pixel DVD content, and MPEG-2 motion compensation for soft-

ware DVD

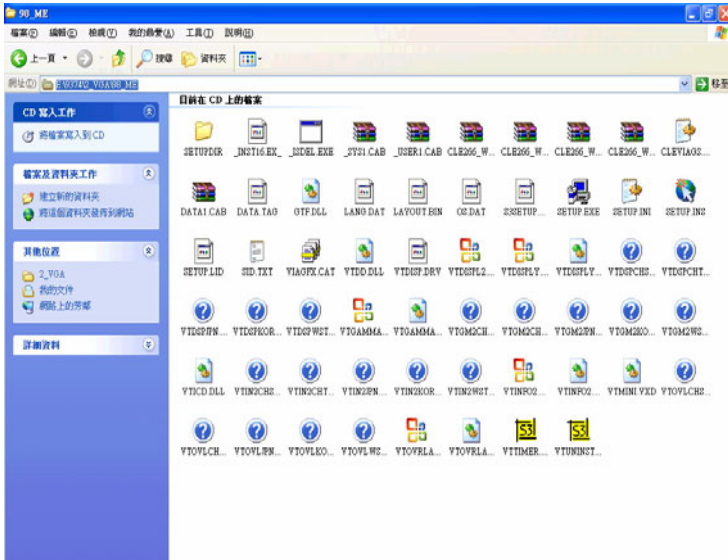
*Note: This utility is used for the following versions of Windows system, and it has to be installed before installing all the other drivers:*

Windows 2000

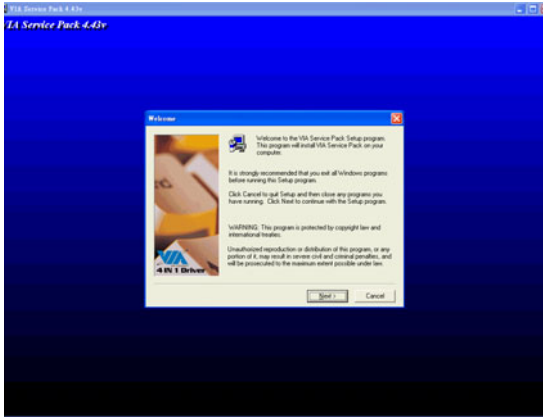
Windows XP

### 3.3 Installing VIA CLE266 the Utility

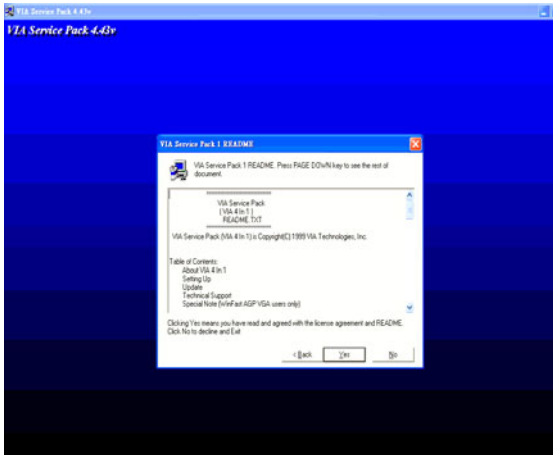
1. Insert the driver CD into your system's CD-ROM drive. In a few seconds, the CD main menu appears. Move to "\\PCM-9374\1\_Chipset", and click "4in1443V" icon..



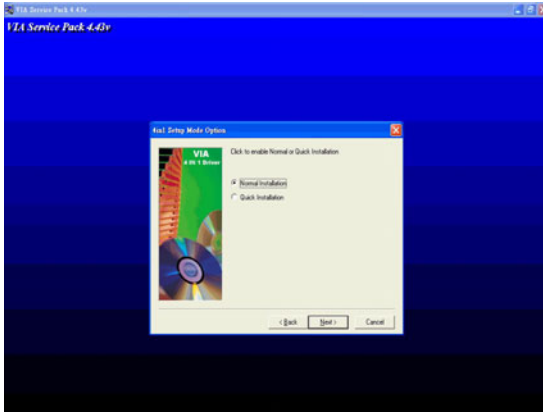
2. Click "Next" when you see the following message.



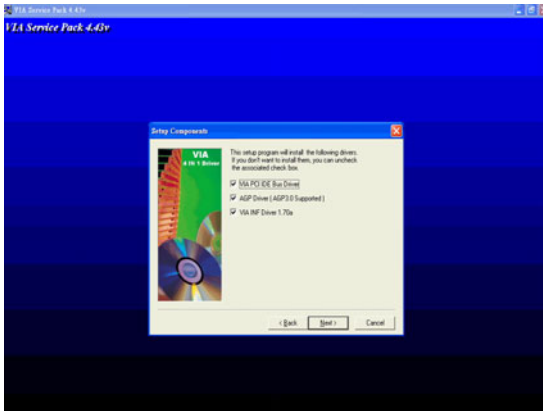
3. Click "Yes" when you see the following message.



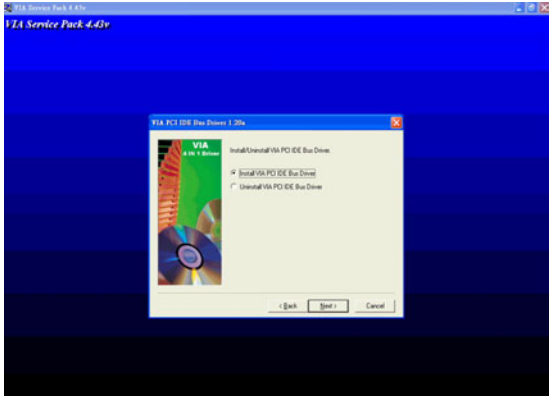
4. Select "Normal Installation", and "lick "Next" when you see the following message.



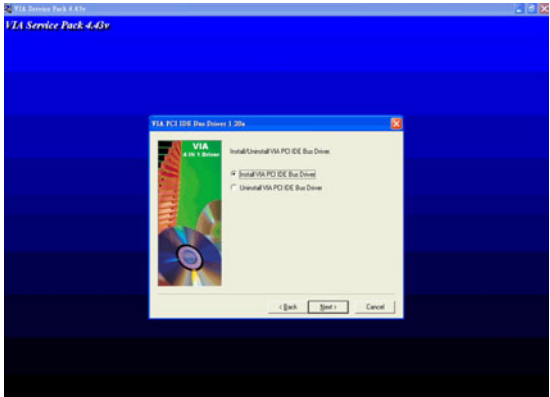
5. Select "VIA PCI IDE Bus Driver", "AGP Driver[ AGP3.0 supported]", "VIA INF Driver 1.70a" and click "Next" when you see the following message



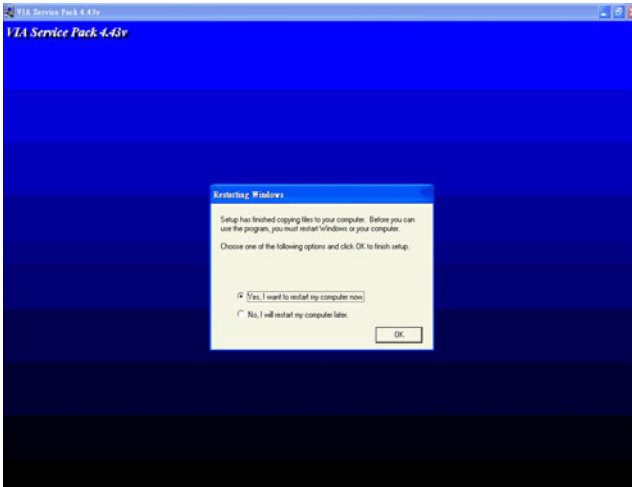
6. Select “install VIA PCI IDE Bus Driver”, and click “Next” when you see the following message



7. Select”install AGP Driver”, and click “Next” when you see the following message



8. When the following message appears, you can choose to restart your computer now or later





CHAPTER **4**

**Award BIOS Setup**

# Chapter 4 Award BIOS Setup

## 4.1 Introduction

---

Award's BIOS ROM has a built-in setup program that allows users to modify the basic system configuration. This type of information is stored in battery-backed memory (CMOS RAM) so that it retains the setup information when the power is turned off.

### 4.1.1 CMOS RAM Auto-backup and Restore

The CMOS RAM is powered by an onboard button cell battery. When you finish BIOS setup, the data in CMOS RAM will be automatically backed up to Flash ROM. If operation in harsh industrial environment cause a soft error, BIOS will recheck the data in CMOS RAM and automatically restore the original data in Flash ROM to CMOS RAM for booting.

*Note: If you intend to change the CMOS setting without restoring the previous backup, you have to click on "DEL" within two seconds of the "CMOS checksum error..." display screen message appearing. Then enter the "Setup" screen to modify the data. If the "CMOS checksum error..." message appears again and again, please check to see if you need to replace the battery in your system.*

## 4.2 Entering Setup

---

Turn on the computer and check for the "patch code". If there is a number assigned to the patch code, it means that the BIOS supports your CPU.

If there is no number assigned to the patch code, please contact Advantech's applications engineer to obtain an up-to-date patch code file. This will ensure that your CPU's system status is valid. After ensuring that you have a number assigned to the patch code, press <Del> to allow you to enter the setup

## 4.3 Standard CMOS Setup

---

Choose the “Standard CMOS Features” option from the “Initial Setup Screen” menu, and the screen below will be displayed. This menu allows users to configure system components such as date, time, hard disk drive, floppy drive, display, and memory.

## 4.4 Advanced BIOS Features

---

The “Advanced BIOS Features” screen appears when choosing the “Advanced BIOS Features” item from the “Initial Setup Screen” menu. It allows the user to configure the PCM-9374 according to his particular requirements. Below are some major items that are provided in the Advanced BIOS Features screen. A quick booting function is provided for your convenience. Simply enable the Quick Booting item to save yourself valuable time.

### 4.4.1 Virus Warning

If enabled, a warning message and alarm beep activates if someone attempts to write here. The commands are “Enabled” or “Disabled.”

### 4.4.2 L1 & L2 Cache

Enabling this feature speeds up memory access. The commands are “Enabled” or “Disabled.”

### 4.4.3 Quick Power On Self Test

This option speeds up the Power-On Self Test (POST) conducted as soon as the computer is turned on. When enabled, BIOS shortens or skips some of the items during the test. When disabled, the computer conducts normal POST procedures.

### 4.4.4 First/Second/Third/Other Boot Device

The BIOS tries to load the OS with the devices in the sequence selected. Choices are: Floppy, LS/ZIP, HDD, SCSI, CDROM, LAN, Disabled.

### 4.4.5 Swap Floppy Drive

Logical name assignments of floppy drives can be swapped if there is more than one floppy drive. The commands are “Enabled” or “Disabled.”

### 4.4.6 Boot UP Floppy Seek

Selection of the command “Disabled” will speed the boot up. Selection of “Enabled” searches disk drives during boot up.

### 4.4.7 Boot Up NumLock Status

This feature selects the “power on” state for NumLock. The commands are “Enabled” or “Disabled.”

#### **4.4.8 Gate A20 Option**

Normal: A pin in keyboard controller controls GateA20

Fast (Default): Chipect controls GateA20.

#### **4.4.9 Typematic Rate Setting**

The typematic rate is the rate key strokes repeat as determined by the keyboard controller. The commands are “Enabled” or “Disabled.” Enabling allows the typematic rate and delay to be selected.

#### **4.4.10 Typematic Rate (Chars/Sec)**

BIOS accepts the following input values (characters/second) for typematic rate: 6, 8, 10, 12, 15, 20, 24, 30.

#### **4.4.11 Typematic Delay (msec)**

Typematic delay is the time interval between the appearance of two consecutive characters, when holding down a key. The input values for this category are: 250, 500, 750, 1000 (msec).

#### **4.4.12 Security Option**

This setting determines whether the system will boot up if the password is denied. Access to Setup is always limited.

System The system will not boot, and access to Setup will be denied if the correct password is not entered at the prompt.

Setup The system will boot, but access to Setup will be denied if the correct password is not entered at the prompt.

*Note: To disable security, select “PASSWORD SETTING” in the main menu. At this point, you will be asked to enter a password. Simply press <Enter> to disable security. When security is disabled, the system will boot, and you can enter Setup freely.*

#### **4.4.13 APIC Mode**

This setting allows selecting an OS with greater than 64MB of RAM. Commands are “Non-OS2” or “OS2.”

#### **4.4.14 MPS Version Control For OS**

This reports if an FDD is available for Windows 95. The commands are “Yes” or “No.”

## 4.5 Integrated Peripherals

---

### 4.5.1 IDE Master/Slave PIO/UDMA Mode,

IDE Primary (Secondary) Master/Slave PIO/UDMA Mode (Auto) Each channel (Primary and Secondary) has both a master and a slave, making four IDE devices possible. Because each IDE device may have a different Mode timing (0, 1, 2, 3, 4), it is necessary for these to be independent. The default setting “Auto” will allow autodetection to ensure optimal performance.

### 4.5.2 On-Chip Secondary PCI IDE

If you enable IDE HDD Block Mode, the enhanced IDE driver will be enabled. Leave IDE HDD Block Mode on the default setting.

### 4.5.3 USB Controller

Select Enabled if your system contains a Universal Serial Bus (USB) controller and you have USB peripherals. The choices: Enabled, Disabled.

### 4.5.4 USB Keyboard/Mouse Support

Select Enabled if user plan to use an USB keyboard. The choice: Enabled, Disable.

### 4.5.5 AC97 Audio

Select Disable if you do not want to use AC-97 audio. Option is Auto, Disable.

### 4.5.6 Init Display First

This item allows you to choose which one to activate first, PCI Slot or on-chip VGA. The choices: PCI Slot, Onboard.

### 4.5.7 Onboard LAN Control

Option is Enable and Disable. Select Disable if user does not want to use onboard LAN controller1

### 4.5.8 IDE HDD Block Mode

You can enable the Primary IDE channel and/or the Secondary IDE channel. Any channel not enabled is disabled. This field is for systems with only SCSI drives.

### 4.5.9 Onboard FDC Controller

When enabled, this field allows you to connect your floppy disk drives to the onboard floppy disk drive connector instead of a separate controller card. If you want to use a different controller card to connect the floppy disk drives, set this field to Disabled.

### 4.5.10 Onboard Serial Port

For settings reference the Appendix for the serial resource allocation, and Disabled for the on-board serial connector

#### **4.5.11 UART Mode Select**

This item allows you to select UART mode. The choices: IrDA, ASKIR, Normal.

#### **4.5.12 RxD, TxD Active**

This item allows you to determine the active of RxD, TxD. The Choices: “Hi, Hi,” “Lo, Lo,” “Lo, Hi,” “Hi, Lo.”

#### **4.5.13 IR Transmission Delay**

This item allows you to enable/disable IR transmission delay. The choices: Enabled, Disabled.

#### **4.5.14 UR2 Duplex Mode**

This item allows you to select the IR half/full duplex function. The choices: Half, Full.

#### **4.5.15 Onboard Parallel Port**

This field sets the address of the on-board parallel port connector. You can select either 3BCH/IRQ7, 378H/IRQ7, 278H/IRQ5 or Disabled. If you install an I/O card with a parallel port, make sure there is no conflict in the address assignments. The CPU card can support up to three parallel ports, as long as there are no conflicts for each port.

#### **4.5.16 Parallel Port Mode**

This field allows you to set the operation mode of the parallel port. The setting “Normal” allows normal speed operation, but in one direction only. “EPP” allows bidirectional parallel port operation at maximum speed. “ECP” allows the parallel port to operate in bi-directional mode and at a speed faster than the maximum data transfer rate. “ECP + EPP” allows normal speed operation in a two-way mode.

#### **4.5.17 EPP Mode Select**

This field allows you to select EPP port type 1.7 or 1.9. The choices: EPP1.7, 1.9.

#### **4.5.18 ECP Mode Use DMA**

This selection is available only if you select “ECP” or “ECP + EPP” in the Parallel Port Mode field. In ECP Mode Use DMA, you can select DMA channel 1, DMA channel 3, or Disable. Leave this field on the default setting.

## 4.6 Power Management Setup

---

The power management setup controls the CPU card's "green" features to save power. The following screen shows the manufacturer's defaults::

### 4.6.1 Power-Supply Type

Choose AT or ATX power supply

### 4.6.2 ACPI function

The choice: Enabled, Disabled.

### 4.6.3 Power Management

This category allows you to select the type (or degree) of power saving and is directly related to the following modes:

1. HDD Power Down
2. Suspend Mode

There are four selections for Power Management, three of which have fixed mode settings.

Min. Power Saving	Minimum power management., Suspend Mode = 1 hr., and HDD Power Down = 15 min.
Max. Power Saving	Maximum power management., Suspend Mode = 1 min., and HDD Power Down = 1 min.
User Defined (Default)	Allows you to set each mode individually. When not disabled, each of the ranges are from 1 min. to 1 hr. except for HDD Power Down which ranges from 1 min. to 15 min. and disable.

### 4.6.4 Video Off In Suspend

When system is in suspend, video will turn off.

### 4.6.5 Modem Use IRQ

This determines the IRQ in which the MODEM can use. The choices: 3, 4, 5, 7, 9, 10, 11, NA.

### 4.6.6 HDD Power Down

You can choose to turn the HDD off after one of the time intervals listed, or when the system is in "suspend" mode. If the HDD is in a power saving mode, any access to it will wake it up.

### 4.6.7 Soft-Off by PWR-BTTN

If you choose "Instant-Off", then pushing the ATX soft power switch button once will switch the system to "system off" power mode. You can choose "Delay 4 sec." If you do, then pushing the button for more than 4

seconds will turn off the system, whereas pushing the button momentarily (for less than 4 seconds) will switch the system to “suspend” mode.

#### **4.6.8 CPU THRM-Throttling**

This field allows you to select the CPU THRM-Throttling rate. The choices: 12.5%, 25.0%, 37.5%, 50.0%, 62.5%, 75.0%, 87.5%.

#### **4.6.9 PowerOn By LAN**

This item allows you to wake up the system via LAN from the remote-host. The choices: Enabled, Disabled.

#### **4.6.10 PowerOn By Modem**

When Enabled, an input signal on the serial Ring Indicator (RI) line (in other words, an incoming call on the modem) awakens the system from a soft off state. The choices: Enabled, Disabled.

#### **4.6.11 PowerOn By Alarm**

When Enabled, you can set the date and time at which the RTC (real-time clock) alarm awakens the system from Suspend mode. The choices: Enabled, Disabled.

#### **4.6.12 Primary IDE 0 (1) and Secondary IDE 0 (1)**

When Enabled, the system will resume from suspend mode if Primary IDE 0 (1) or Secondary IDE 0 (1) is active. The choice: Enabled, Disabled.

#### **4.6.13 FDD, COM, LPT PORT**

When Enabled, the system will resume from suspend mode if FDD, COM port, or LPT port is active. The choice: Enabled, Disabled.

#### **4.6.14 PCI PIRQ [A-D]#**

When Enabled, the system will resume from suspend mode if interrupt occurs. The choice: Enabled, Disabled.

## **4.7 PnP/PCI Configurations**

---

### **4.7.1 PnP OS Installed**

Select Yes if you are using a plug and play capable operating system. Select No if you need the BIOS to configure non-boot device

### **4.7.2 Reset Configuration Data**

Default is Disable. Select Enable to reset Extended System Configuration Data (ESCD) if you have installed a new add-on and system econfiguration has caused such a conflict that OS cannot boot.

### **4.7.3 Resources controlled by:**

The commands here are “Auto” or “Manual.” Choosing “manual” requires you to choose resources from each following sub-menu. “Auto” automatically configures all of the boot and Plug and Play devices but you must be using Windows 95 or above.

#### **4.7.4 PCI/VGA Palette Snoop**

This is left at “Disabled.”

## **4.8 Password Setting**

---

To change the password:

1. Choose the “Set Password” option from the “Initial Setup Screen” menu and press <Enter>.

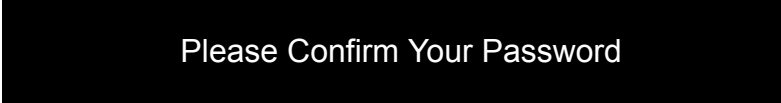
The screen will display the following message:



**Please Enter Your Password**

Press <Enter>.

2. If the CMOS is good or if this option has been used to change the default password, the user is asked for the password stored in the CMOS. The screen will display the following message:



**Please Confirm Your Password**

Enter the current password and press <Enter>.

3. After pressing <Enter> (ROM password) or the current password (user-defined), you can change the password stored in the CMOS. The password must be no longer than eight (8) characters.

Remember, to enable the password setting feature, you must first select either “Setup” or “System” from the “Advanced BIOS Features” menu.

## **4.9 Save & Exit Setup**

---

If you select this and press <Enter>, the values entered in the setup utilities will be recorded in the CMOS memory of the chipset. The micropro-

cessor will check this every time you turn your system on and compare this to what it finds as it checks the system. This record is required for the system to operate.

## **4.10 Exit Without Saving**

---

Selecting this option and pressing <Enter> lets you exit the setup program without recording any new values or changing old ones.

## PCI SVGA/LCD Setup

This chapter details the software configuration information. It shows you how to configure the card to match your application requirements. The AWARD System BIOS is covered in Chapter 4.

Sections include:

- Installation of SVGA drivers
  - for Windows 98
  - for Windows NT/2000/XP
- Connections for standard LCDs
- Further information

# Chapter 5 PCI SVGA/LCD Setup

## 5.1 Introduction

---

The board has an onboard CLE266 chipset for its AGP/SVGA controller. It supports LVDS LCD displays and conventional analog CRT monitors with 64MB frame buffer shared with system memory. The VGA controller can support 24-bit signal and drive CRT displays with resolutions up to 1400x1050@85-Hz, TTL signal for TFT LCD with resolution up to 1600x1200@60Hz and support 1 channel LVDS display mode up to UXGA panel resolution .

### 5.1.1 CMOS setting for panel type

The PCM-9374 system BIOS and custom drivers are located in a 2Mbit, Flash ROM device, designated U23. A single Flash chip holds the system BIOS, VGA BIOS and network Boot ROM image. The display can be configured via CMOS settings. This method minimized the number of chips and different type of LCD panels, please choose "panel type" from the "intergrated peripherals" menu in CMOS setting. It will be a different and dedicated BIOS for LVDS Panel. Please check with technical support team for the LVDS setting.

### 5.1.2 Display type

The PCM-9374F can be set in several configurations: on a CRT, on a TFT LCD, or on both CRT and LCD dual independent display or on a LVDS display. The system is initially set to dual display mode. If you want to enable the CRT display only or the flat panel display only, please choose it in BIOS. If you want to enable the LVDS display, please install a different and dedicated BIOS which is only for LVDS panel.

## 5.2 Connections to Standard LCD

---

The following tables illustrate typical LCD connection pin outs for the PCM-9374.

## 5.2.1 The connector between PCM-9374 and TOSHIBA

LTM12C275A(800x600, 18bit, TFT LCD (TTL signal))

TOSHIBALTM12C275A		PCM-9374	
DF14-30S 1.25H		DF13-40DP- 1.25V	
Pin No.	Function	Pin No.	Function
1	GND	3	GND
2	NCLK	35	SHFCLC
3	NC		
4	NC		
5	GND	4	GND
6	R0	27	P18
7	R1	28	P19
8	R2	29	P20
9	R3	30	P21
10	R4	31	P22
11	R5	32	P23
12	GND	8	GND
13	G0	19	P10
14	G1	20	P11
15	G2	21	P12
16	G3	22	P13
17	G4	23	P14
18	G5	24	P15
19	GND	33	GND
20	B0	11	P2
21	B1	12	P3
22	B2	13	P4
23	B3	14	P5
24	B4	15	P6
25	B5	16	P7
26	ENAB	37	M/DE
27	GND	34	GND
28	VCC	1	5V
29	VCC	2	5V
30	GND	39	GND

## 5.3 Installation of the SVGA Driver

---

Complete the following steps to install the SVGA driver. Follow the procedures in the flow chart that apply to the operating system that you are using within your PCM-9374.

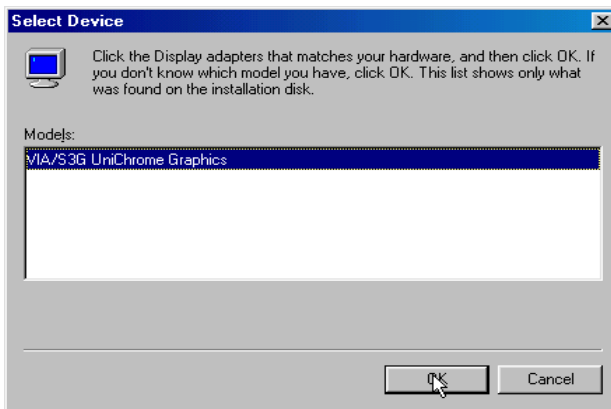
- Notes:**
1. The windows illustrations in this chapter are intended as examples only. Please follow the listed steps, and pay attention to the instructions which appear on your screen.
  2. For convenience, the CD-ROM drive is designated as "D" throughout this chapter.

### 5.3.1 Installation of Windows 98/2000

#### Install Windows 98

##### A. Install Win98 driver

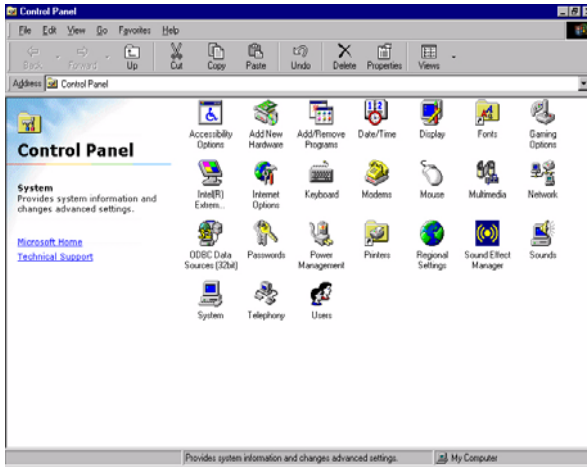
1. Find Win98 driver from CD at the directory of PCM-9374 CD, \2\_VGA\98\_ME\Setup
2. Double click "setup" and "next" into setup wizard.



3. Restart computer when installation finished.

## B. Detecting Hardware device

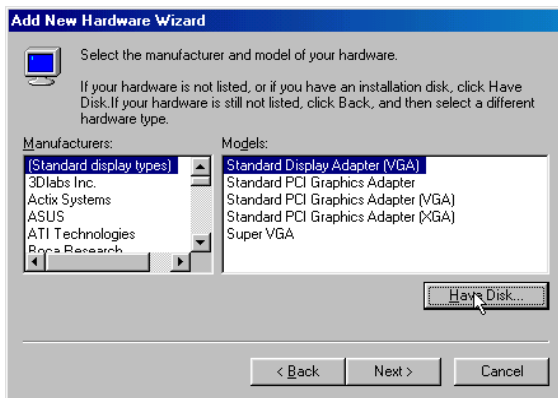
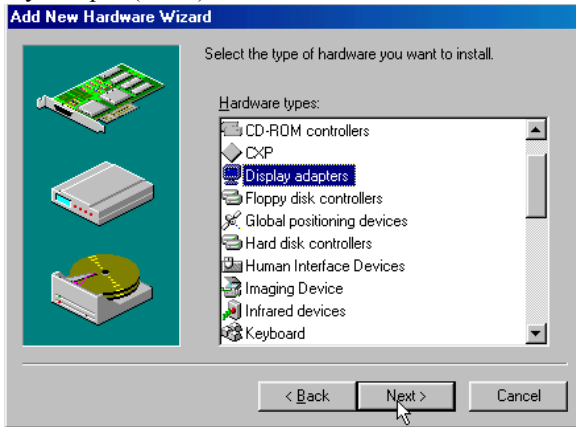
1.
  - a. Select "Start", "Settings". "Control Panel".
  - b. Double click "Network".



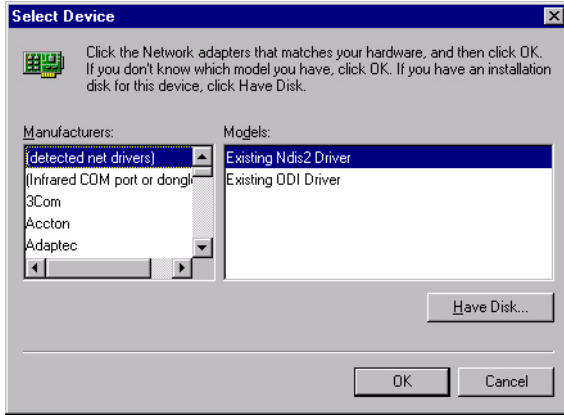
2.
  - a. Click "Add New Hardware" and prepare to install network functions.



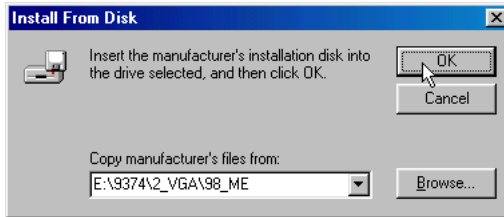
3. a. Select the "standard display type" item to add the "Standard Display Adapter(VGA)"



4. a. Click "Have Disk" to install the driver.



5. a. Insert the CD into the D: drive  
b. Fill in "E:\9374\2\_VGA\98\_ME\Setup"  
c. Click "OK"

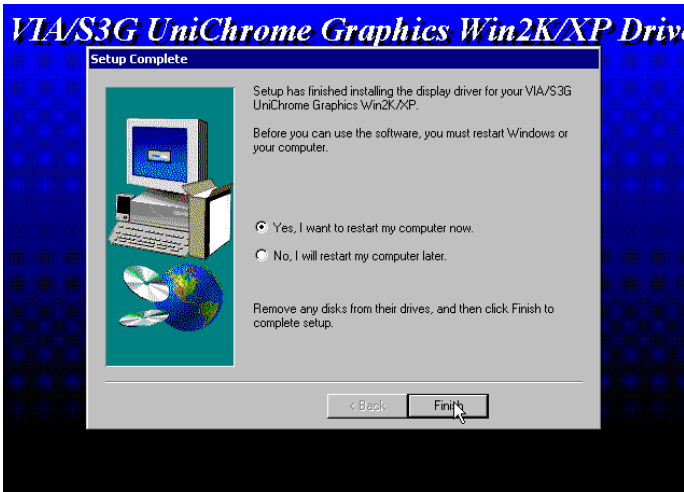


6. a. Make sure the configurations of relative items are set correctly.  
b. Click "Finish" to reboot.





3. Restart computer when installation finished.



## 5.4 Further Information

---

For further information about the AGP/VGA installation in your PCM-9374, including driver updates, troubleshooting guides and FAQ lists, visit the following web resources:

Intel website: [www.intel.com](http://www.intel.com)

Advantech websites: [www.advantech.com](http://www.advantech.com)

[www.advantech.com.tw](http://www.advantech.com.tw)



## **Audio Setup**

The PCM-9374 is equipped with an audio interface that records and plays back CD-quality audio. This chapter provides instructions for installing the software drivers included on the audio driver diskettes.

# Chapter 6 Audio Setup

## 6.1 Introduction

---

The PCM-9374's on-board audio interface provides high-quality stereo sound and FM music synthesis (ESFM) by using the VIA 8236 controller and Realtek ALC202 codec. The audio interface can record, compress, and play back voice, sound, and music with built-in mixer control.

## 6.2 Driver installation

---

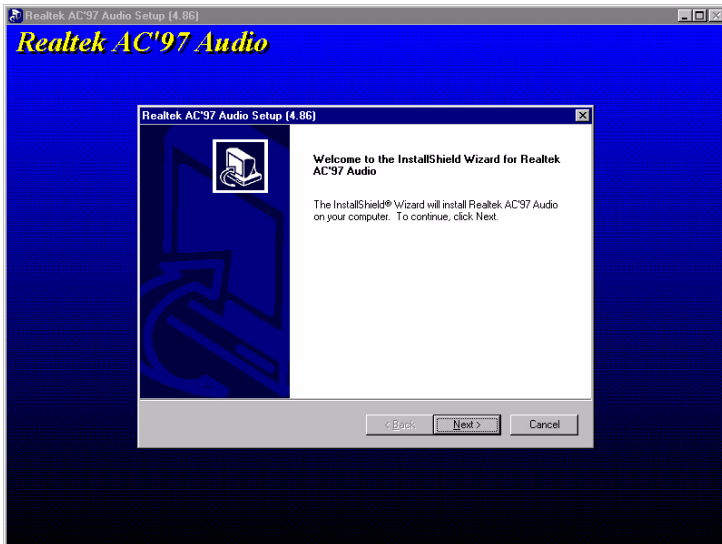
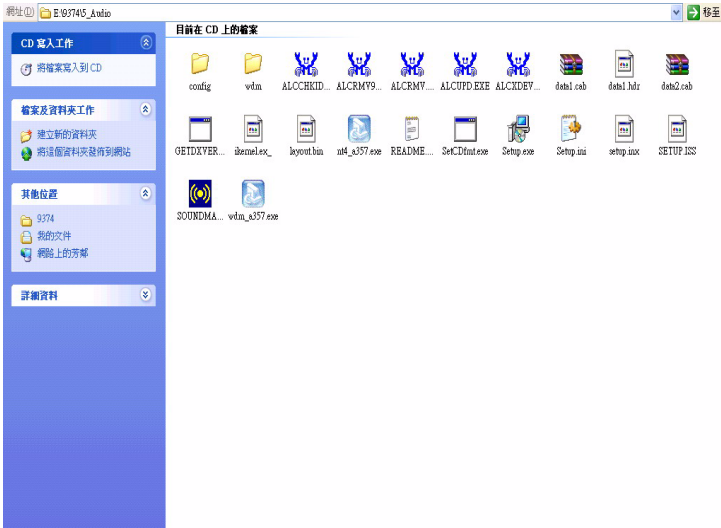
### 6.2.1 Before you begin

Please read the instructions in this chapter carefully before you attempt installation. The audio drivers for the PCM-9374 board are located on the audio driver CD. Run the supplied SETUP program to install the drivers; don't copy the files manually.

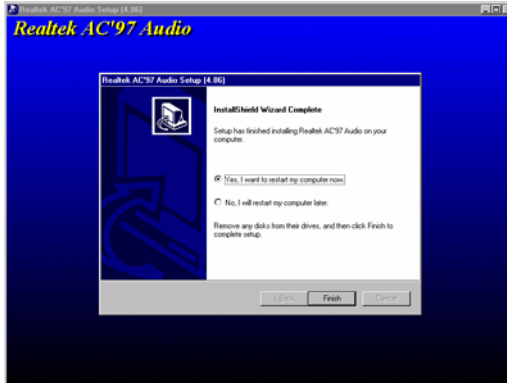
Note: *The files on the software installation diskette are compressed. Do not attempt to install the drivers by copying the files manually. You must use the supplied SETUP program to install the drivers.*

## 6.2.2 Windows 98 drivers

1. Find Win98/2000 Audio driver folder from CD at the directory of PCM-9374 CD, click "setup" to start the installation process.



2. Click "yes" to reboot your computer.



## **Ethernet Interface**

This chapter provides information on Ethernet configuration.

Sections include:

- Introduction
- Installation of Ethernet drivers for Windows 98/2000/NT
- Further information

# Chapter 7 Ethernet Interface

## 7.1 Introduction

---

The PCM-9374 is equipped with two high performance 32-bit Ethernet chipset which is fully compliant with IEEE 802.3 100 Mbps CSMA/CD standards. It is supported by major network operating systems. The network boot feature can be utilized by incorporating the boot ROM image files for the appropriate network operating system. The boot ROM BIOS files are combined with system BIOS, which can be enabled/disabled in the BIOS setup.

## 7.2 Installation of Ethernet driver

---

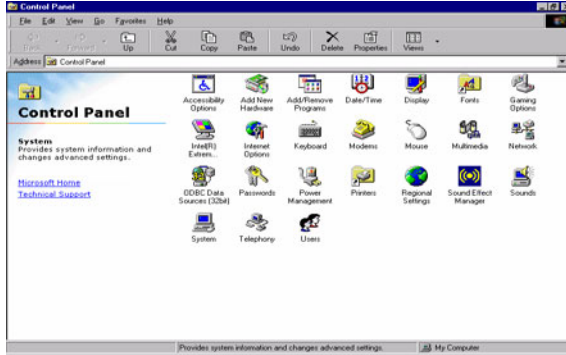
Before installing the Ethernet driver, note the procedures below. You must know which operating system you are using in your PCM-9374 Series, and then refer to the corresponding installation flow chart. Then just follow the steps described in the flow chart. You will quickly and successfully complete the installation, even if you are not familiar with instructions for MS-DOS or Windows.

Note: *The windows illustrations in this chapter are examples only. Follow the steps and pay attention to the instructions which appear on your screen.*

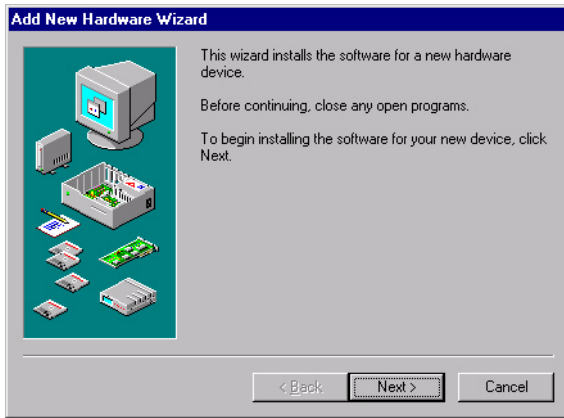
### 7.2.1 Installation for Windows 98

1. a. Select "Start", "Settings", "Control Panel".

b. Double click "Network".



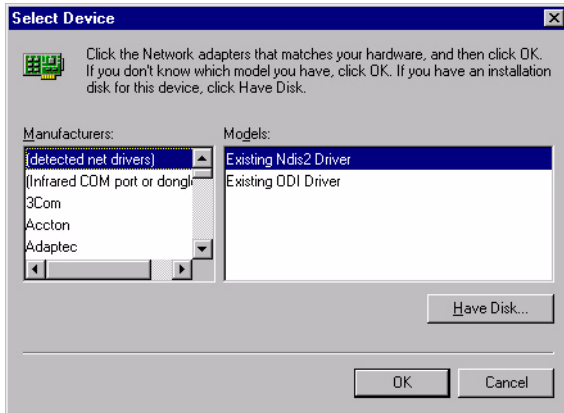
2. a. Click "Add New Hardware" and prepare to install network functions.



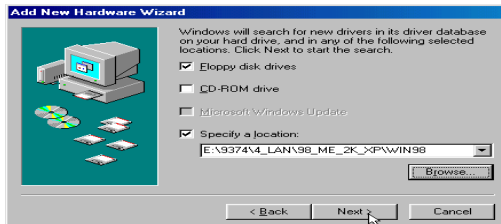
3. a. Select the "Adapter" item to add the Ethernet card.



4. a. Click "Have Disk" to install the driver.



5. a. Insert the CD into the D: drive  
b. Fill in "E:\9374\4\_LAN\98\_ME\_2K\_XP"  
c. Click "OK"

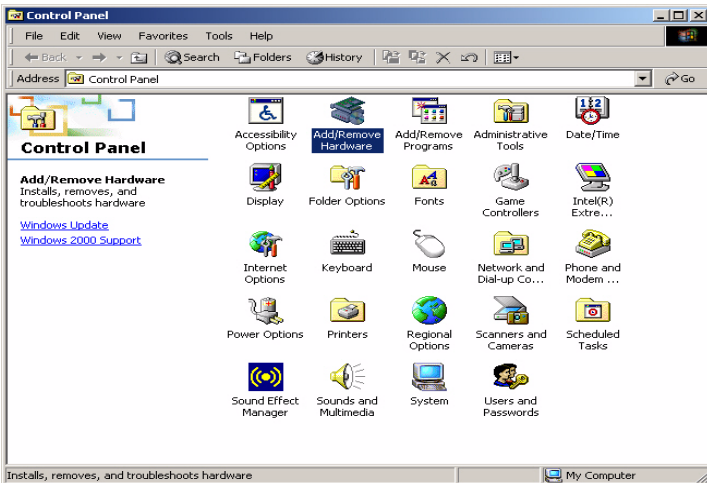


6.
  - a. Make sure the configurations of relative items are set correctly.
  - b. Click "Finish" to reboot.

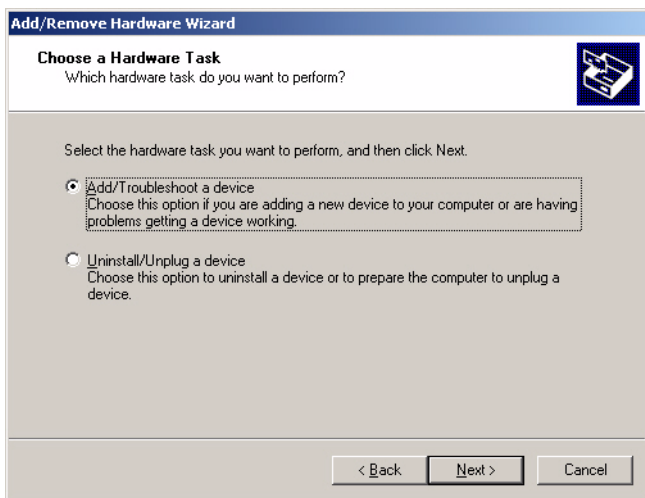


## 7.2.2 Installation for Windows 2000

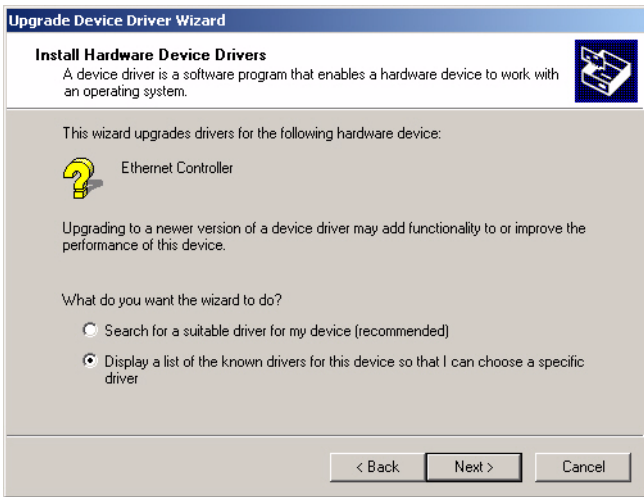
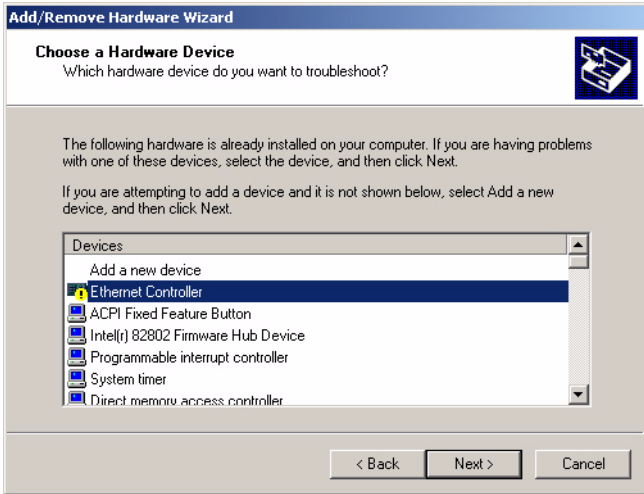
1.
  - a. Select "Start", "Settings", "Control Panel".
  - b. Double click "Network".

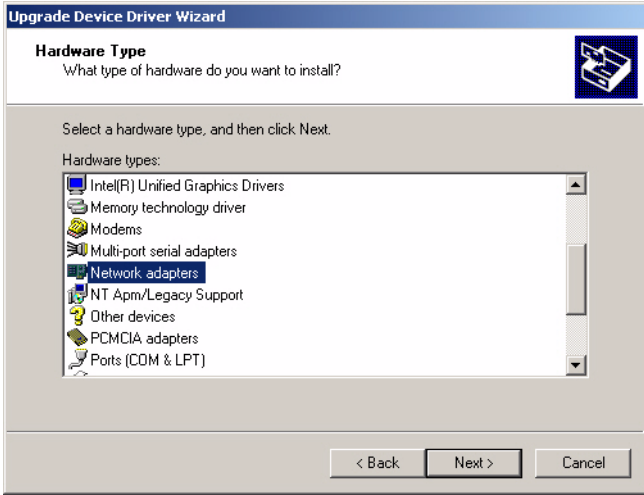


2. Click “Add new hardware wizard” and prepare to install network function

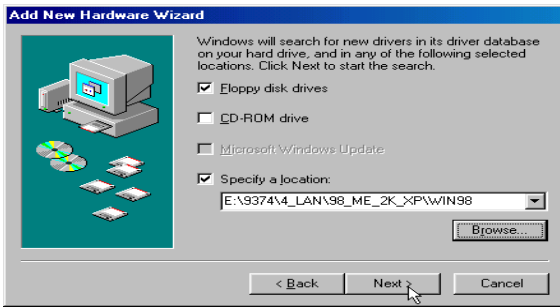


### 3. Choose Hardware Device “Ethernet Controller”





4. Insert the CD into D: drive
  - a. Fill in the Find the LAN chipset folder at the directory of PCM-9374 win2000 folder from CD ROM drive
  - b. Click “OK”.



5. Choose the "Realtek 8100 related adapter" item, Click "Next" and the "finished"



- 6
  - a. Make sure the configurations of relative items are set correctly
  - b. Click "OK"

## 7.3 Further information

---

Intel website: [www.intel.com](http://www.intel.com)

Advantech websites: [www.advantech.com](http://www.advantech.com)

[www.advantech.com.tw](http://www.advantech.com.tw)



## **Programming the GPIO and Watchdog Timer**

The PCM-9374 is equipped with a watchdog timer that resets the CPU or generates an interrupt if processing comes to a standstill for any reason. This feature ensures system reliability in industrial standalone or unmanned environments.

# Appendix A Programming GPIO & Waterdog Timer

## A.1 Supported GPIO Register

---

Bellow are detailed description of the GPIO addresses and programming sample.

### A.1.1 GPIO Registers

#### **CRF0 (GP10-GP17 I/O selection register. Default 0xFF)**

When set to a '1', respective GPIO port is programmed as an input port.

When set to a '0', respective GPIO port is programmed as an output port.

#### **CRF1 (GP10-GP17 data register. Default 0x00)**

If a port is programmed to be an output port, then its respective bit can be read/written.

If a port is programmed to be an input port, then its respective bit can only be read.

#### **CRF2 (GP10-GP17 inversion register. Default 0x00)**

When set to a '1', the incoming/outgoing port value is inverted.

When set to a '0', the incoming/outgoing port value is the same as in data register.

#### **Extended Function Index Registers (EFIRs)**

The EFIRs are write-only registers with port address 2Eh or 4Eh on PC/AT systems.

#### **Extended Function Data Registers(EFDRs)**

the EFDRs are read/write registers with port address 2Fh or 4Fh on PC/AT systems.

## A.1.2 GPIO Example program-1

-----  
Enter the extended function mode, interruptible double-write  
-----

```
MOV DX,2EH
MOV AL,87H
OUT DX,AL
OUT DX,AL
```

-----  
Configure logical device 7(GP10~GP17), configuration register  
CRF0,CRF1,CRF2  
-----

```
MOV DX,2EH
MOV AL,07H ; point to Logical Device Number Reg.
OUT DX,AL
MOV DX,2FH
MOV AL,07H ; select logical device 7
OUT DX,AL ;
MOV DX,2EH
MOV AL,F0H
OUT DX,AL
MOV DX,2FH
MOV AL,00H ; 01:Input 00:output for GP10~GP17
OUT DX,AL
MOV DX,2EH
MOV AL,F2H ;
OUT DX,AL
MOV DX,2FH
MOV AL,00H ;Set GPIO is normal not inverter
OUT DX,AL;
MOV DX,2EH
MOV AL,F1H
```

```
OUT DX,AL
MOV DX,2FH
MOV AL,??H ; Put the output value into AL
OUT DX,AL
```

-----  
Exit extended function mode  
-----

```
MOV DX,2EH
MOV AL,AAH
OUT DX,AL
```

## A.2 Watchdog programming

---

Bellow is a sample of programming code for controlling the Watchdog Timer function.

-----  
Enter the extended function mode ,interruptible double-write  
-----

```
MOV DX,2EH
MOV AL,87H
OUT DX,AL
OUT DX,AL
```

-----  
Configure logical device 8, configuration register CRF6  
-----

```
MOV DX,2EH
MOV AL,07H ; point to Logical Device Number Reg.
OUT DX,AL
MOV DX,2FH
MOV AL,08H ; select logical device 8
OUT DX,AL ;
MOV DX,2EH
MOV AL,30H ;Set watch dog activate or inactivate
OUT DX,AL
MOV DX,2FH
MOV AL,01H ; 01:activate 00:inactivate
OUT DX,AL ;
MOV DX,2EH
MOV AL,F5H ; Setting counter unit is second
OUT DX,AL
MOV DX,2FH
MOV AL,00H
OUT DX,AL;
```

```
MOV DX,2EH
MOV AL,F4H
OUT DX,AL
MOV DX,2FH
MOV AL,05H ; Set 5 seconds
OUT DX,AL
;-----
; Exit extended function mode
;-----
MOV DX,2EH
MOV AL,AAH
OUT DX,AL
```

## Pin Assignments

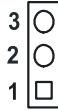
This appendix contains information of a detailed or specialized nature. It includes:

- CPU Fan Power Connector
- Ethernet 10/100Base-T Connector
- Audio Connectot
- Main Power Connector
- Keyboard and PS/2 Mouse Connector
- Floppy Drive Connector
- IDE (1st and 2nd) HDD Connector
- Parallel Port Connector
- Power & HDD LED,
- USB Connector
- Backlight Connector
- CRT Display Connector
- Flat Panel Connector
- Ext. Flat Panel Connector
- LCD Signal Mapping
- Peripheral power connector
- LVDS Interface Connector
- COM1 RS232 series port
- COM2 RS-232/422/485 serial port
- CompactFlash Card Connector
- ATX Power Feature Connector

# Appendix B Pin Assignments

## B.1 CPU Fan Power Connector (CN5)

---

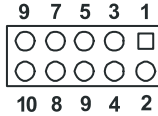


---

<b>CN5</b>	<b>Fan Power</b>
<b>Part Number</b>	<b>1655303020</b>
<b>Description</b>	<b>WAFER BOX 2.0mm 3P 180D W/LOCK</b>
<b>Pin</b>	<b>Pin name</b>
1	FAN_DET
2	VCC
3	GND

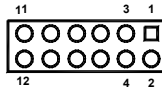
---

## B.2 Audio Connector (CN21)



<b>CN21</b>		<b>Audio Connector</b>	
<b>Part Number</b>		<b>1653205260</b>	
<b>Description</b>		<b>BOX HEADER SMD 5*2 180D(M) 2.0mm</b>	
<b>Pin</b>	<b>Pin name</b>	<b>Pin</b>	<b>Pin name</b>
1	LOUT_R	2	LIN_R
3	GND	4	GND
5	LOUT_L	6	LIN_L
7	GND	8	GND
9	MIC1	10	MIC2

## B.3 Main Power Connector (CN1)



<b>CN1</b>		<b>ATX Power</b>	
<b>Part Number</b>		<b>1655412090</b>	
<b>Description</b>		<b>Power CONN. 6*2 180D W/Fixed Lock 4200-WS-A1</b>	
<b>Pin</b>	<b>Pin name</b>	<b>Pin</b>	<b>Pin name</b>
1	GND	2	GND
3	VCC	4	GND
5	VCC	6	VCCSB
7	GND	8	PWR_PSON#
9	VCC	10	GND
11	VCC	12	+12V

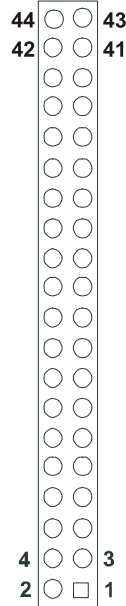
## **B.4 Keyboard and PS/2 Mouse Connector (CN16)**

---

<b>CN16</b>	<b>KB/MS Connector</b>
<b>Part Number</b>	<b>1654606203</b>
<b>Description</b>	<b>MINI DIN 6P Short body W/Shielding</b>
<b>Pin</b>	<b>Pin name</b>
1.	PS2_KBDAT
2.	PS2_MS DAT
3.	GND
4.	VCC
5.	PS2_KBCLK
6.	PS2_MSCLK

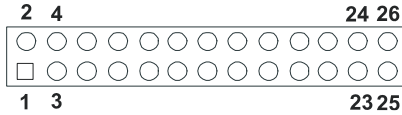
## B.5 IDE Hard Drive Connector (CN12)

CN12		Primary IDE Connector	
Description	BOX HEADER SMD 22*2P 180 D(M) 2.0mm IDIOT-PROOF		
Pin	Signal	Pin	Signal
1	IDE RESET	2	GND
3	DATA 7	4	DATA 8
5	DATA 6	6	DATA 9
7	DATA 5	8	DATA 10
9	DATA 4	10	DATA 11
11	DATA 3	12	DATA 12
13	DATA 2	14	DATA 13
15	DATA 1	16	DATA 14
17	DATA 0	18	DATA 15
19	GND	20	N/C
21	DRQ	22	GND
23	IO WRITE	24	GND
25	IO READ	26	GND
27	HD READY	28	N/C
29	HDACK 0	30	GND
31	IDE IRQ	32	OCS16
33	ADDR 1	34	N/C
35	ADDR 0	36	ADDR 2
37	HARD DISK SELECT 0	38	HARD DISK SELECT 1*
39	DE ACTIVE	40	GND
41	Vcc	42	Vcc
43	GND	44	NC



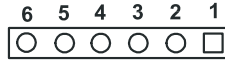
## B.6 Parallel Port Connector (CN7)

---



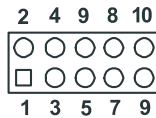
<b>CN7 Print Port (Parallel Port) Connector</b>			
<b>Description</b>		<b>BOX HEADER SMD 13*2P 180D(M) 2.0mm</b>	
<b>Pin</b>	<b>Signal</b>	<b>Pin</b>	<b>Signal</b>
1	STROBE	2	AUTOFD
3	D0	4	ERR
5	D1	6	INIT
7	D2	8	SLCTINI
9	D3	10	GND
11	D4	12	GND
13	D5	14	GND
15	D6	16	GND
17	D7	18	GND
19	ACK	20	GND
21	BUSY	22	GND
23	PE	24	GND
25	SLCT	26	N/C

## B.7 Power & HDD LED Connector (CN13)



<b>CN13</b>	<b>Hark Disk LED &amp; Power LED Connector</b>
<b>Description</b>	<b>WAFER BOX 2.0mm 6P 180D MALE W/LOCK</b>
<b>Pin</b>	<b>Signal</b>
1	+5V
2	GND
3	power LED+ (+5V)
4	power LED- (GND)
5	HDD LED +
6	HDD LED -

## B.8 USB Connector (CN14,CN15)



<b>CN14</b>	<b>USB Connector</b>		
<b>Part Number</b>	<b>1653005260</b>		
<b>Description</b>	<b>PIN HEADER 5*2P 180D(M) 2.0mm SMD IDIOT-PROOF</b>		
<b>Pin</b>	<b>Pin name</b>	<b>Pin</b>	<b>Pin name</b>
1	VCC	2	VCC
3	USB_P0-	4	USB_P1-
5	USB_P0+	6	USB_P1+
7	GND	8	GND
9	GND	10	NC

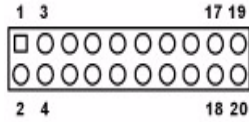
<b>CN15 USB Connector</b>			
<b>Part Number</b>		<b>1653005260</b>	
<b>Description</b>		<b>PIN HEADER 5*2P 180D(M) 2.0mm SMD IDIOT-PROOF</b>	
<b>Pin</b>	<b>Pin name</b>	<b>Pin</b>	<b>Pin name</b>
1	VCC	2	VCC
3	USB_P2-	4	USB_P3-
5	USB_P2+	6	USB_P3+
7	GND	8	GND
9	GND	10	NC

## B.9 LCD Inverter Backlight Connector (CN20)



<b>CN20 LCD Inverter Backlight Power Connector</b>	
<b>Description</b>	
<b>WAFER BOX 2.0mm 5P 180D MALE W/LOCK</b>	
<b>Pin</b>	<b>Signal</b>
1	+12 V
2	GND
3	BKLTEN
4	VBR
5	+5 V

## B.10 LVDS Connector (CN17)

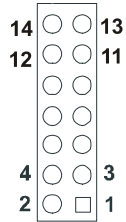


<b>CN 17 LVDS Connector</b>			
<b>Part Number 1653910261</b>			
<b>Description *CONN. SMD 10*2P 180D(M)DF13-20DP-1.25V HRS</b>			
<b>Pin</b>	<b>Pin name</b>	<b>Pin</b>	<b>Pin name</b>
1	GND	2	GND
3	LVDS_A0P	4	LVDS_A3P
5	LVDS_A0M	6	LVDS_A3M
7	LVDS_A1P	8	NC
9	LVDS_A1M	10	NC
11	LVDS_A2P	12	NC
13	LVDS_A2M	14	NC
15	LVDS_CK0P	16	NC
17	LVDS-CK0M	18	NC
19	VDDSAFE	20	VDDSAFE

Note: *The model number of the CN1 socket is DF13A-40DP-1.25V (Hirose Electric Co., Ltd.)*

## B.11 COM2 RS232/422/485 series port (CN9)

CN9		COM2 RS-232/422/485 series port	
Description		BOX HEADER SMD 7*2P 180D MALE 2.0mm	
Pin	RS-232 port	RS-422 port	RS-485 port
1	DCD	N/C	N/C
2	DSR	N/C	N/C
3	RXD	N/C	N/C
4	RTS	N/C	N/CN/C
5	TxD	N/C	N/C
6	CTS	N/C	N/C
7	DTR	N/C	N/C
8	RI	N/C	N/C
9	GND	N/C	N/C
10	GND	N/C	N/C
11	N/C	TxD+	DATA+
12	N/C	TxD-	DATA-
13	N/C	RxD+	N/C
14	N/C	RxD-	N/C



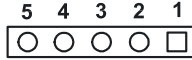
## B.12 CompactFlash Card Connector (CN11)

CN11 CompactFlash Card Connector			
Description HEADER for CF typell 50P 90D(M)SMD 3M W/O Ejector			
Pin	Signal	Pin	Signal
1	GND	2	D03
3	D04	4	D05
5	D06	6	D07
7	*CS0	8	A10
9	*ATA SEL	10	A09
11	A08	12	A07
13	+5 V	14	A06
15	A05	16	A04
17	A03	18	A02
19	A01	20	A00
21	D00	22	D01
23	D02	24	-IOCS16
25	*CD2	26	-CD1
27	D11	28	D12
29	D13	30	D14
31	D15	32	-CS1
33	*VS1	34	-IORD
35	*IOWR	36	-WE
37	INTRQ	38	+5 V
39	*CSEL	40	-VS2
41	*RESER	42	IORDY
43	*INPACK	44	-REG
45	*DASP	46	-PDIAG
47	D08	48	D09
49	D10	50	GND

\* low active

## B.13 IR connector (CN8)

---



Pin	Signal
1	VCC (5 V)
2	IR_CIRRX
3	IR receive
4	GND
5	IR transmit

## System Assignments

This appendix contains information of a detailed nature. It includes:

- System I/O ports
- 1st MB memory map
- DMA channel assignments
- Interrupt assignments

# Appendix C System Assignments

## C.1 System I/O Ports

---

*Table C.1: System I/O ports*

---

Addr. range (Hex)	Device
000-01F	DMA controller
020-021	Interrupt controller 1, master
040-05F	8254 timer
060-06F	8042 (keyboard controller)
070-07F	Real-time clock, non-maskable interrupt (NMI) mask
080-09F	DMA page register
0A0-0BF	Interrupt controller 2
0C0-0DF	DMA controller
0F0	Clear math co-processor
0F1	Reset math co-processor
0F8-0FF	Math co-processor
1F0-1F8	Fixed disk
200-207	Reserved (Game I/O)
278-27F	Reserved (Parallel port 2,LTP3)
2E8-2EF	Reserved (Series port 4)
2F8-2FF	Serial port 2
300-31F	Prototype card
360-36F	Reserved
378-37F	Parallel printer port 1 (LPT 2)
380-38F	SDLC, bisynchronous 2
3A0-3AF	Bisynchronous 1
3B0-3BF	Monochrome display and printer adapter (LPT1)
3C0-3CF	Reserved
3D0-3DF	Color/graphics monitor adapter
3E8-3EF	Reserved (Series port 3)
3F0-3F7	Diskette controller
3F8-3FF	Serial port 1

---

## C.2 1st MB memory map

---

*Table C.2: 1st MB memory map*

Addr. range (Hex)	Device
F0000h - FFFFFh	System ROM
*CC000h - EFFFFh	Unused (reserved for Ethernet ROM)
C0000h - CBFFFh	Expansion ROM (for VGA BIOS)
B8000h - BFFFFh	CGA/EGA/VGA text
B0000h - B7FFFh	Unused
A0000h - AFFFFh	EGA/VGA graphics
00000h - 9FFFFh	Base memory

\* If Ethernet boot ROM is disabled (Ethernet ROM occupies about 16 KB)

\* E0000 - EFFFF is reserved for BIOS POST

## C.3 DMA channel assignments

---

*Table C.3: DMA channel assignments*

Channel	Function
0	Available
1	Available (audio)
2	Floppy disk (8-bit transfer)
3	Available (parallel port)
4	Cascade for DMA controller 1
5	Available
6	Available
7	Available

\* Audio DMA select 1, 3, or 5

\*\* Parallel port DMA select 1 (LPT2) or 3 (LPT1)

## C.4 Interrupt assignments

---

*Table C.4: Interrupt assignments*

<b>Interrupt#</b>	<b>Interrupt source</b>
IRQ 0	Interval timer
IRQ 1	Keyboard
IRQ 2	Interrupt from controller 2 (cascade)
IRQ 3	COM2
IRQ 4	COM1
IRQ 5	Reserved (COM4)
IRQ 6	FDD
IRQ 7	LPT1
IRQ 8	RTC
IRQ 9	Reserved (audio)
IRQ 10	Reserved (COM3)
IRQ 11	Reserved for watchdog timer
IRQ 12	PS/2 mouse
IRQ 13	INT from co-processor
IRQ 14	Primary IDE
IRQ 15	Secondary IDE for CFC

\* Ethernet interface IRQ select: 9, 11, 15

\* PNP audio IRQ select: 9, 11, 15

\* PNP USB IRQ select: 9, 11, 15

\* PNP ACPI IRQ select: 9, 11, 15

Appendix

# D

## **AT/ATX Power setting**

# Appendix D AT/ATX Power setting

## D.1 Introduction

---

PCM-9374 supports 2 kinds of power mode to boot up system. One is ATX mode, the other is AT mode. ATX should connect standby power and power supply on# signal to turn on main power supply. AT power doesn't have those two pins and the pin 6 of PCM-9374 power connector (CN1) needs to be connected to 5 voltage for properly boot up.

The power connector table & Power supply diagram tables are as bellow:

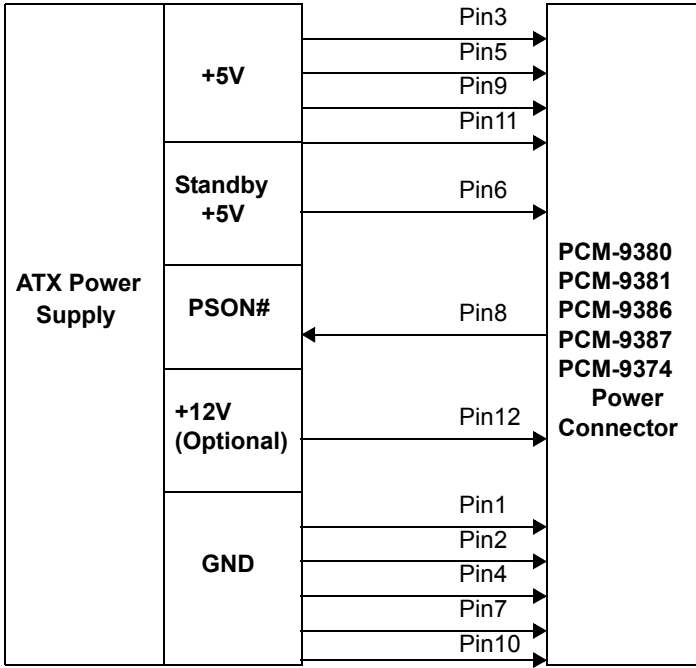
---

**Table D.1: Power Connector**

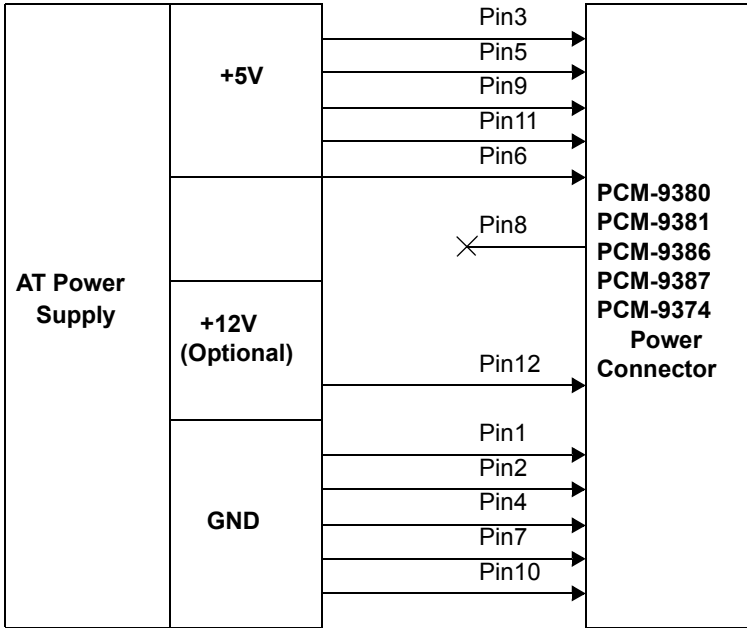
Power Connector (CN1)	Power Type : ATX	Power Type : AT
Pin 1: GND	GND	GND
Pin 2: GND	GND	GND
Pin 3: VCC	+5V	+5V
Pin 4: GND	GND	GND
Pin 5: VCC	+5V	+5V
Pin 6:VCCSB	Standby +5V	+5V
Pin 7: GND	GND	GND
Pin 8: PWR_PSON#	PWR_PSON#	NC
Pin 9: VCC	+5V	+5V
Pin 10: GND	GND	GND
Pin 11: VCC	+5V	+5V
Pin 12: +12V	+12V(Optional)	+12V(Optional)

---

ATX power supply diagram



AT power supply diagram



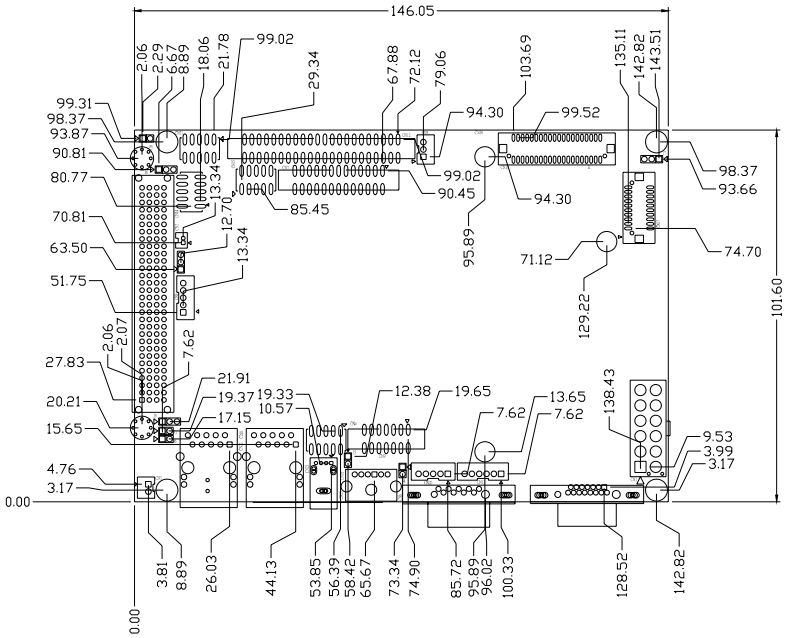
Appendix

**E**

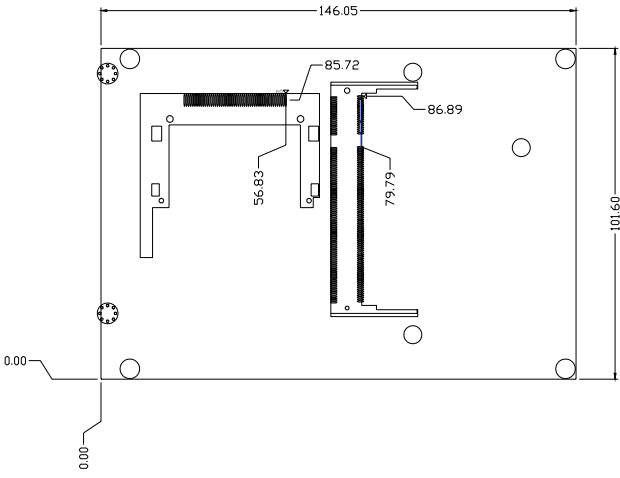
## **Mechanical Drawings**

# Appendix E Mechanical Drawings

## E.1 Mechanical Drawings



**Figure E.1: PCM-9374 Mech Drawing(Component)**



**Figure E.2: PCM-9374 Mech Drawing (Solder Side)**

