

PCM-3910 DC to DC power supply PC/104+ Module

Startup Manual



Packing list

Before you begin installing your card, please make sure that the following materials have been shipped:

- 1 PCM-3910
- 1 Startup manual

If any of these items are missing or damaged, contact your distributor or sales representative immediately.

Note 1: Acrobat Reader is required to view any PDF file. Acrobat Reader can be downloaded at: www.adobe.com/Prodindex/acrobat/read-step.html(Acrobat is a trademark of Adobe.)

Specifications

5V output	10A
12Voutput	2A
-5Voutput	0.4A
-12Voutput	0.4A
10V~24V input	6.5A

Mechanical and Environmental

- **Dimensions (L x W):** 3.55" x 3.75" x 0.55"
- **Weight:** 30g
- **Operating Temperature:** -40 ~ 85°C(-40~185°F)
- **Storage temperature:** -40 ~ 85°C(-40~185°F)
- **Operating Humidity:** 0%~90% relative humidity, non-condensing
- **Power Supply Voltage:** 5V
- **Power Consumption:** 5V, $\pm 5\%$

Features

50W output

10V to 24V DC input range

Reverse input protection

5V, 12V, -5V, -12V outputs

For more information on this and other Advantech products, please visit our website at:

<http://www.advantech.com>

<http://www.advantech.com/epc>

For technical support and service, please visit our support website at:

<http://service.advantech.com.tw/eservice/>

This manual is for the PCM-3910 series Rev. A1.

Part No. 2006391000

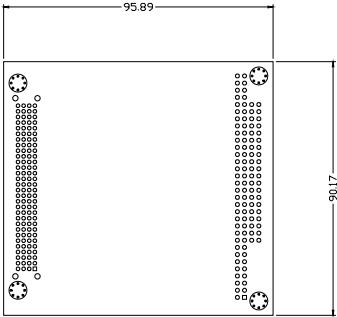
1st Edition
Mar. 2005

Jumpers & Connectors

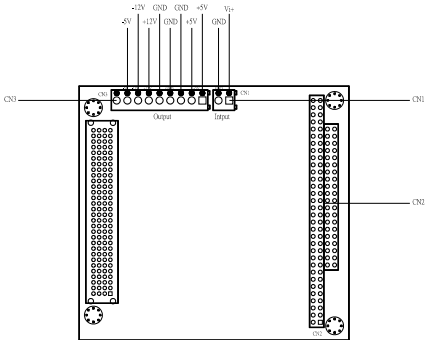
Connectors on the board link it to external devices, such as hard disk drives, a keyboard or expansion bus connectors. In addition, the board has a number of jumpers that allow you to configure your system to suit your application.

The table below lists the function of each of the jumpers and connectors.

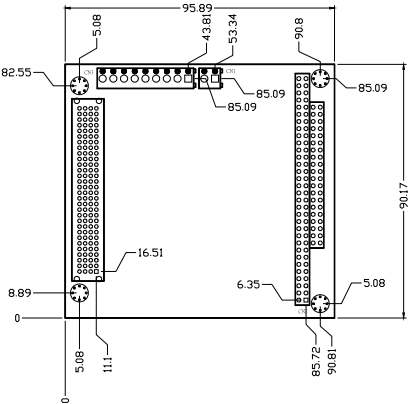
Connectors	
Label	Function
CN1	Power Input Connector
CN2	PC/104+ connector
CN3	Power Output Connector
CN1	
Pin	Pin name
1	Vi+
2	GND
CN3	
Pin	Pin name
1	5V
2	5V
3	GND
4	GND
5	GND
6	12V
7	-12V
8	-5V



Dimensions



Board Layout



Component Placement



This device complies with the requirements in part 15 of the FCC rules: Operation is subject to the following two conditions:

- 1. This device may not cause harmful interference, and*
- 2. This device must accept any interference received, including interference that may cause undesired operation*

This equipment has been tested and found to comply with the limits for a Class B digital device, pursuant to Part 15 of the FCC Rules. These limits are designed to provide reasonable protection against harmful interference when the equipment is operated in a commercial environment. This equipment generates, uses, and can radiate radio frequency energy and, if not installed and used in accordance with the instruction manual, may cause harmful interference to radio communications. Operation of this device in a residential area is likely to cause harmful interference in which case the user will be required to correct the interference at his/her own expense. The user is advised that any equipment changes or modifications not expressly approved by the party responsible for compliance would void the compliance to FCC regulations and therefore, the user's authority to operate the equipment.

Caution!



Achtung!

There is a danger of a new battery exploding if it is incorrectly installed. Do not attempt to recharge, force open, or heat the battery. Replace the battery only with the same or equivalent type recommended by the manufacture. Discard used batteries according to the manufacture's instruction.