

**PCM-3662**  
**PC/104-plus Ethernet**  
**Module**

**Features**

- Supports IEEE 802.3u Ethernet standard
- Supports IEEE 802.3x Full Duplex Flow Control
- Supports 10/100 Base-T Ethernet
- Supports Wake-On-LAN function
- Provide 4 modes LED definition

**Specifications**

**Software Driver Support**

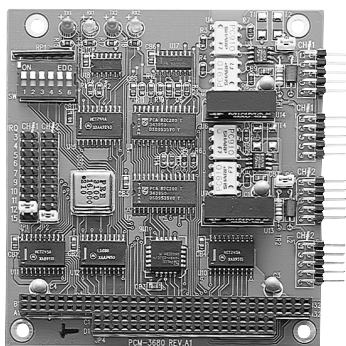
- Windows 95/98/NT/2000 driver
- Novell server driver
- Windows for workgroups driver
- Unixware 7.0 driver
- WinCE driver for x86 platform
- Novell ODI client driver
- Novell ODI driverfor client32
- Linux driver

**General**

- **Power:** +5 V @ 250 mA
- **Temperature:**  
Operating: 0° C ~ 70° C  
Storage: -15° C ~ 80° C
- **Humidity:** 10% to 90% (operating)

**Ordering Information**

- PCM-3662-A**  
PC/104-plus Ethernet Module



**PCM-3680**  
**Dual-port Isolated CAN**  
**Interface Module**

**Features**

- Operates two separate CAN networks at the same time
- High speed transmission up to 1 Mbps
- Direct memory mapping enables very fast access to the CAN controllers
- C library and examples included
- DOS Library, Utility and Win 3.1/NT DeviceNet DLL drivers included

**Specifications**

- **Port:** 2
- **CAN Controller:** SIA-1000
- **CAN Transceiver:** SIA-1000
- **Signals Support:** CAN\_H, CAN\_L Supports
- **Memory Segment Base Address:**  
From C800H to EFO0I
- **IRQ:** 3, 4, 5, 6, 7, 9, 10, 11, 12 or 15
- **Isolation Voltage:** 1000 V<sub>DC</sub>
- **Power Consumption:** +5 V @ 400 mA
- **Connectors:** dual DB-9 male connectors (cable included)
- **Operating Temperature:** 32° F ~ 122° F (0 ~ 65° C)
- **Dimensions:** 3.6" X 3.8"  
(90 mm x 96 mm)

**Ordering Information**

- PCM-3680-A**  
Dual-port Isolated CAN Interface Module