

PCM-3380 Intel® Pentium® M/Celeron® M PCI-104 CPU module Startup Manual



Packing List

Before you begin installing your card, please make sure that the following materials have been shipped:

- 1 PCM-3380 SBC
- 1 Start-up manual
- 1 Utility CD
- 1 BATTERY 3V/210 mAf cable p/n: 1750129010
CR2032WK with Wire ASS'Y
- 1 Y -cable external cable p/n: 1703060053
- 1 IDE cable p/n: 1701440350
- 1 Wire ATX power p/n: 1703200380
- 1 Ethernet RJ-45 Conn.conversion cable p/n: 1701100202
- 1 KB/MOUSE Y-cable p/n: 1700060202
- 1 COM port cable p/n: 1701200220
- 1 USB Cable Adaptor p/n: 1700000897
- 1 VGA cable p/n: 1700000898
- 1 Audio cable p/n:1700000918
- 1 LPT cable p/n:1700000916

If any of these items are missing or damaged, contact your distributor or sales representative immediately.

Note 1: For detailed contents of the PCM-3380, please refer to the enclosed CD-ROM (in PDF format).

Note 2: Acrobat Reader is required to view any PDF file. Acrobat Reader can be downloaded at: www.adobe.com/Prodindex/acrobat/readstep.html (Acrobat is a trademark of Adobe)

For more information on this and other Advantech products, please visit our website at:

<http://www.advantech.com>

<http://www.advantech.com/epc>

For technical support and service, please visit our support website at:

<http://service.advantech.com.tw/eservice/>

This manual is for the PCM-3380

Part No. 2006338001
Printed in Taiwan

2nd. Edition
February 2005

Specifications

Standard Motherboard Functions

- **CPU:** Embedded Intel Pentium-M Processor 1.1GHz, Celeron-M 600 MHz, Pentium-M 1.6GHz (option)
- **Second level cache:** 1MB on Pentium-M processor, 512KB on Celeron-M 600MHz
- **BIOS:** AWARD 512 KB Flash memory
- **System Chipset:** Intel 855GME ICH4 Chipset 400MHz FSB
- **Enhanced IDE interface:** Supports up to two EIDE devices. BIOS auto-detect, PIO Mode 3 or Mode 4 transfer, Ultra DMA33 mode supported
- **Serial ports:** 2 serial ports with power (option by cable) COM1,2: RS-232
- **Parallel port:** One parallel port, supports SPP/EPP/ECP mode
- **DRAM:** 200 pin SO-DIMM sockets, support 128 MB to 1GB, accept 128/256/512/1000MB, DDR200/266/333 DRAM
- **Keyboard/mouse connector:** 6-pin wafer box connector for keyboard and PS/2 mouse
- **SSD:** Supports CompactFlash Card Type I / Type II (option for Micro Drive)
- **Power management:** Supports Advanced Power Management /ACPI, Intel Speedstep
- **Watchdog timer:** 255-level-interval Watchdog timer, setup by software, selection, generates system reset
- **Audio:** AC' 97 2.0 compliant. Supports Mic in, line in, line out
- **USB:** 6 x USB 2.0, UHCI specification compliant
- **FAN connector:** Support for + 5 V FAN
- **PCI-104 expansion:** 120-pin PCI PC/104-Plus module connector

VGA/LCD Interface

- **Chipset:** Intel 855GME
- Supports CRT Display, 2CH 18-bit LVDS LCD display
- Supports Dual Display Combination: CRT+ 36bit/48bit LVDS, 18bit LVDS+ 18bit LVDS
- Optimized Shared Memory Architecture, support 64MB frame buffer using system memory

Ethernet Interface

- **Chipset:** Intel 82562EMT
- **Ethernet interface:** RJ-45 cable, PCI Ethernet controller, IEEE 802.3u protocol compatible PCI 10/100 Mbps Ethernet.

Solid State Disk

- Supports CompactFlash Card Type I / Type II (option for Micro Drive)

Mechanical and Environmental

- **Board size:** 116mm X 110mm complain with PCI-104 1.0
- **Weight:** .277 kg (with heatsink)
- **Operating temperature:** 0° to 60° C (32 to 140° F)
- **Storage temperature:** -40° to 85° C (-40 to 185° F)
- **Operating humidity:** 0% to 95% relative humidity, noncondensing
- **Power consumption:** 5V + 5%, 12V+5%
 - Celeron M 600 MHz+ DDR 512MB: Max. 2.16A @ 5V; Typical 1.80A @ 5V
 - Pentium M 1.1 GHz + DDR 512MB: Max. 3.68A @ 5V; Typical 1.74A @ 5V
 - Pentium M 1.6 GHz + DDR 512MB: Max. 7.37A @ 5V; Typical 3.72A @ 5V
- **Power supply voltage:** -Average 500mA@12V; + 5 V ± 5 %, +12V ± 5 %

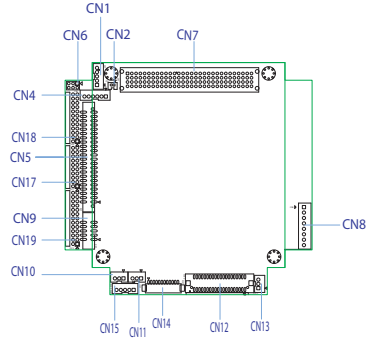
The table below lists the functions of each of the board connectors:

Connectors

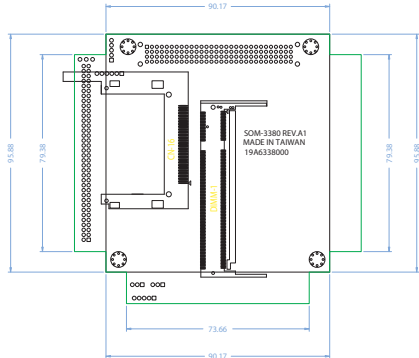
Table 1-1:
Connectors

Label	Function
CN1	LCD Inverter connector
CN2	Battery connector
CN4	KB/MS connector
CN5	IDE 44pin connector
CN6	Power/Reset Header/Buzzer
CN7	PCI 104 connector
CN8	Power connector
CN9	LAN connector
CN10	FAN connector(5V Only)
CN11	Audio Line-out connector
CN12	LVDS connector
CN13	ATX AUX connector
CN14	CRT connector
CN15	Audio Line-in/Mic connector
CN16	CF connector
CN17	COM Port connector
CN18	USB connector
CN19	LPT

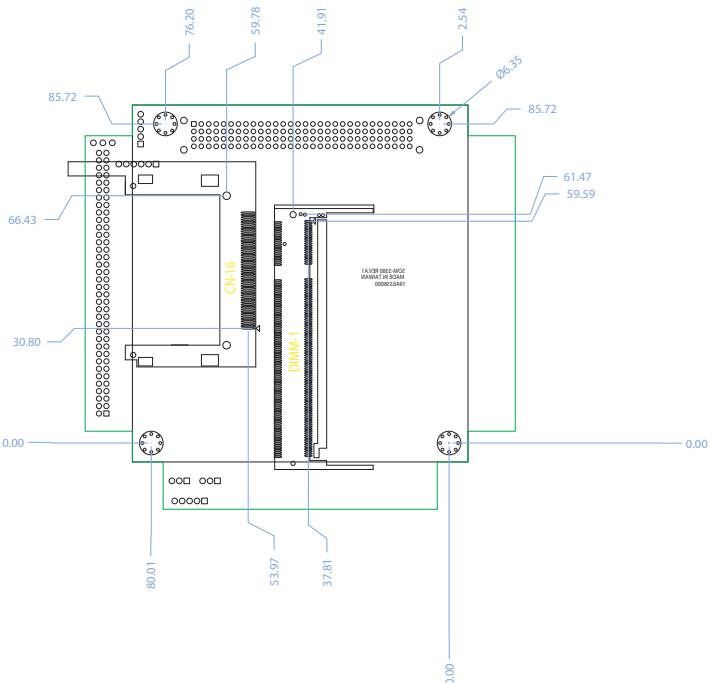
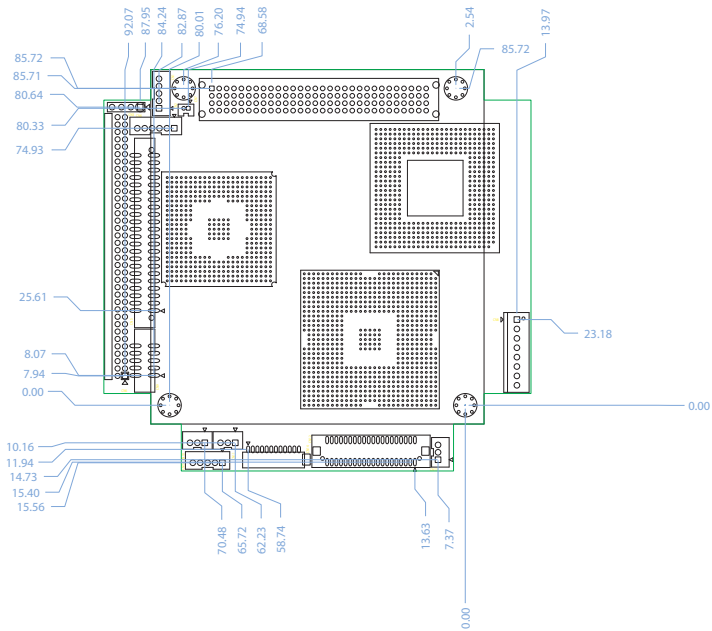
Locating connectors



Locating connectors (component side)



Locating connectors (solder side)



Dimensions