

PCM-3370 Intel® Pentium® III/Celeron™ PC/104+ CPU module with Ethernet and On-board LCD controller Startup Manual



PCM-3370 Intel® Pentium® III/Celeron™ PC/104+ CPU module
with Ethernet and On-board LCD controller

Packing List

Before you begin installing your card, please make sure that the following materials have been shipped:

- 1 PCM-3370 All-in-one single board computer
- 1 Start-up manual
- CD-ROM or Disks for utility, drivers, and manual (in PDF format)
- 1 2.5" IDE flat cable, 44-pin to 44-pin (product no. 1701440350)
- 1 PS/2 keyboard & mouse cable (product no. 1700060202)
- 2 serial port cables (product no. 1700100250)
- 1 Y-cable external cable (product no. 1703060053)
- 1 parallel cable (product no. 1700260250)
- 1 VGA cable (product no. 1701160150)
- 1 LAN cable (product no. 1701100202)
- ATX power cable (product no. 1703200380)

If any of these items are missing or damaged, contact your distributor or sales representative immediately.

Note 1: For detailed contents of the PCM-3370, please refer to the enclosed CD-ROM or disk (in PDF format).

Note 2: Acrobat Reader is required to view any PDF file. Acrobat Reader can be downloaded at: www.adobe.com/Prodindex/acrobat/readstep.html (Acrobat is a trademark of Adobe.)

For more information on this and other Advantech products, please visit our website at:

<http://www.advantech.com>
<http://www.advantech.com/epc>

For technical support and service, please visit our support website at:

<http://www.advantech.com/support>

This manual is for the PCM-3370

Part No. 2006337010

1st. Edition
August 2003

Specifications

Standard SBC Functions

- **CPU:**
Embedded Intel® Celeron™ 400/650ULV, Pentium® III 800/933LV processor.
- **BIOS:** AWARD 256 KB Flash memory
- **System memory:** One 144-pin SODIMM socket accepts up to 512 MB SDRAM
- **Enhanced IDE interface:** Supports up to two EIDE devices. BIOS auto-detect, PIO Mode 3 or Mode 4 transfer, Ultra DMA33 mode supported
- **Serial ports:** One serial RS-232 port, one serial RS-232/422/485 port
- **Parallel port:** One parallel port, supports SPP/EPP/ECP mode
- **Infrared port:** Shared with COM 2. Transfer rate up to 1.15 Mbps
- **Keyboard/mouse connector:** Mini-DIN connector supports standard PS/2 keyboard and mouse
- **USB interface:** Two USB ports, USB 1.1 compliant
- **Power management:** Supports power saving modes including Normal/Standby/Suspend. APM 1.1 compliant
- **Watchdog timer:** 1.6 sec. intervals generate system reset or IRQ11.

Local-bus Flat Panel/VGA Interface

- **Chipset:** VIA VT8606
- **Interface:** PCI interface, 64-bit engine. Support for 9,12,15,18,24,36bit TFT and optional 16 or 24-bit DSTN panel
- **LVDS:** Supports 2 Channel (2x18bit) LVDS interface

Ethernet Interface

- **Chipset:** Realtek RTL8139D
- **Ethernet interface:** PCI 10/100 Mbps Ethernet. IEEE 802.3 U protocol compatible
- **Connection:** On-board 2 x 5 2.0 mm connector
- **Built-in boot ROM (optional)**

Solid State Disk

- Supports CompactFlash™ cards

Mechanical and environmental

- **Dimensions (L x W):** 96 mm x 115 mm (3.77" x 4.05")
- **Weight:** .2 kg (.48 lb)
- **Operating temperature:** 0° ~ 60° C (32 ~ 140° F)
- **Storage temperature:** -40° ~ 85° C (-40 ~ 185° F)
- **Operating humidity:** 0% to 95% relative humidity, noncondensing
- **Power supply voltage:** + 5 V ± 5 %
- **Power requirements:** 5V@2.4A for Intel Celeron 400ULV & 128M

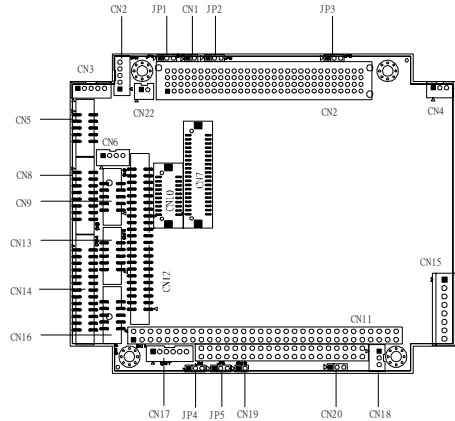
Connectors

The table below lists the function of each of the board connectors:

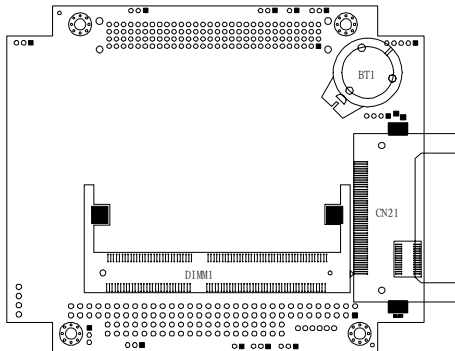
Table 1-1: Connectors

Label	Function
CN1	Reset connector
CN2	Invert power connector
CN3	IR connector
CN4	FAN connector
CN5	LAN hard disk connector
CN6	422/485 connector
CN7	40-pin LCD port (24bit)
CN8	CRT
CN9	USB connector
CN10	20-Pin LCD connector (36-bit)
CN11	PC/104+ connector
CN12	44-pin IDE connector
CN13	COM2 RS232 connector
CN14	LPT connector
CN15	Power Connector
CN16	COM1 RS232 connector
CN17	KB/MS connector
CN18	ATX power connector
CN19	Power Switch connector
CN20	Negative Power input
CN21	Compact Flash Slot
CN22	RTC connector
JP1	CMOS Charge&Discharge
JP2	Watchdog Timer
JP3	PCI VIO SELECT
JP4	COM1 RI Input Select
JP5	COM2 RI Input Select

Locating connectors



Locating connectors (component side)



Locating connectors (solder side)

Mechanical Drawings

