

PCD-995

User's Manual

Introduce:

Congratulations on purchasing the PCI-bus PCMCIA Card drive. You now have an easy way to bring the convenience of PCMCIA cards to desktop computer systems. Our PCI-bus PCMCIA Card drives come in many different configurations to provide the maximum flexibility for computer system integrators. PCMCIA drives have long been used in notebook and portable computer owing to their compact size and durability.

The PCI-bus PCMCIA Card drives accept all PCMCIA cards that Conform to PCMCIA standards, including 16-bit cards and 3.3V CardBus cards and 32-bit cards. These include memory cards such as SRAM, Flash and ATA Flash cards. In addition, most I/O cards are also supported including fax/modem, LAN, SCSI and ATA hard disk drive cards. By providing such wide support for the wide array of PCMCIA cards that are currently available, the PCI-bus PCMCIA cards provide a fast and convenient way to transfer data to your PC through the PCI interface.

Features

- Comply with PCI power management
- Comply with ACPI
- 1 front / 1 rear slot, access from rear of PC
- Accept Type I/II/III Cards
- Comply with PCI Local Bus Specification Rev.2.1
- Comply with 1995 PC Card (CardBus) Standard
- ExCa compatible Registers are mapped in Memory
- Use T/I PCI 1420 PCMCIA controller
- Support two PC Card or CardBus Slots with Hot Insertion and Removal
- Mix and Match 5V/3.3V PC Card 16/32 Cards and 3.3V CardBus Cards
- Support Burst Transfers to Maximize Data Throughput on both PCI Buses
- Supports Distributed DMA and PC/PCI DMA
- Support 16/32 bit DMA on both PC Card Sockets or I/O space

User's Manual

Specification

- LED indicators : Power, Busy and Battery Low
- Power Supply Voltage: 5V and 3.3V Typical
- Operation Temperature: 0°C- 70°C
- Storage Temperature: -20°C-85°C
- Relative Humidity : Max 90%
- Dimensions 162mm(L) x 107.8mm(W) x 15mm(H)
For I/F Card Standard 3.5" FDD For Factor

Package Contents

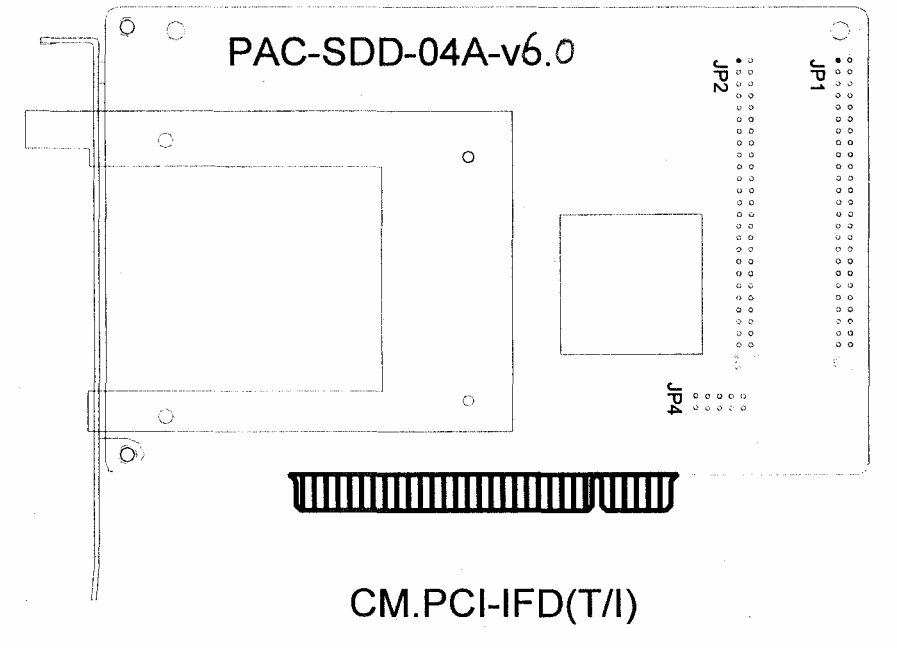
C.M.PCI-IFD

The C.M.PCI-IFD front +rear -mounted PCI-bus PCMCIA drive includes the following items:

- One front-mounted 3.5" FDD from-factor PCMCIA drive
(model no. PAC-SDD-04A-V.6.0 + PAC-SDD-04B-V.2.0)
- 50 Pin flat cable to connect front-mounted drive to PCI expansion card
- One utility diskettes containing devise driver. - Softex WinRoute for Windows 98/2000/MefXP
- This user's manual

Board Layout and Jumper Settings

Please note that this model need jumper setting as follow:



2 X 50-Pin Flat Cable Connectors

Connector JP1

Pin No.	Function	Pin No.	Function
1	VCC5	2	VCC5
3	VCC5	4	VCC5
5	GND	6	B-CAD20
7	B-CADO	8	GND
9	B-CAD1	10	B-CAD21
11	B-CAD2	12	GND
13	B-CAD3	14	B-CAD22
15	B-CAD4	16	GND
17	B-CAD5	18	B-CAD23
19	B-CAD6	20	GND
21	B-CAD7	22	B-CAD24
23	B-CAD8	24	GND
25	B-CAD9	26	B-CAD25
27	B-CAD10	28	GND
29	B-CAD11	30	B-CAD26
31	B-CAD12	32	B-CAD27
33	B-CAD13	34	GND
35	B-CAD14	36	B-CAD28
37	B-CAD15	38	B-CAD29
39	B-CAD16	40	GND
41	B-CAD17	42	B-CAD30
43	B-CAD18	44	B-CAD31
45	B-CAD19	46	GND
47	VCC3	48	VCC3
49	VCC3	50	VCC3

Connector JP2

Pin No.	Function	Pin No.	Function
1	VCCB	2	VCCB
3	VCCB	4	VCCB
5	GND	6	B-CPAR
7	B-CCIBEO#	8	GND
9	B-CCIBE1#	10	B-CAUDIO
11	GND	12	B-CBLOCK#
13	B-CCIBE2#	14	GND
15	B-CCIBE3#	16	B-CCD1#
17	GND	18	B-CCD2#
19	B-CDEVSEL#	20	GND
21	B-CFRAME#	22	B-CGNT#
23	GND	24	B-CINT#
25	B-CIRDY#	26	GND
27	B-CPERR#	28	B-CREQ#
29	GND	30	B-CSERR#
31	B-CDTOP#	32	GND
33	B-CSTSCH#	34	B-CTRDY#
35	GND	36	B-CVS2
37	B-RSVD1	38	GND
39	B-CVS1	40	B-RSVD2
41	GND	42	B-RSVD3
43	B-CRST#	44	B-CLKRUN#
45	B-CCLK	46	GND
47	VPPB	48	VPPB
49	VPPB	50	VPPB

User's Manual

Hardware Installation

The PCI-bus PCMCIA card drive can be installed in a desktop computer in under 10 minutes. The installation procedure is very straight forward.

Installing the C.M.PCI-IFD

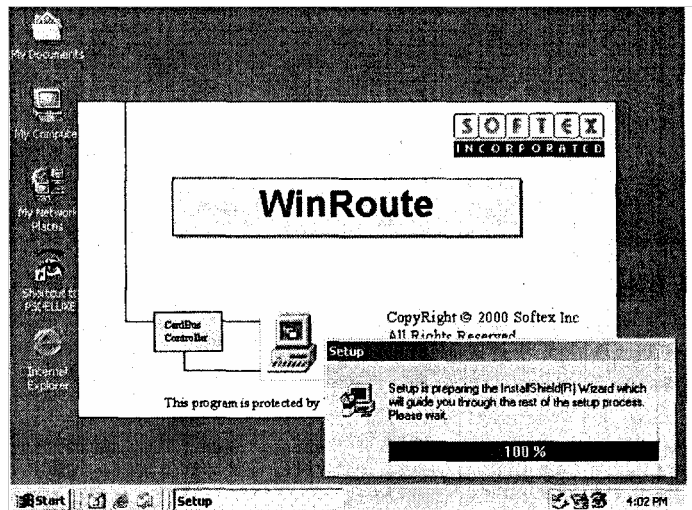
Customers who purchase the C.M.PCI-IFD PCI-bus PCMCIA Card drive Also receive a front-mounted PCMCIA drive that fits in a free floppy Disk drive slot on the front of your computer. Installation of this drive Necessitates a few extra steps. Complete the following steps after step of the previous section.

1. Turn off the power to your computer.
2. Remove the protective cover that covers the 3.5" floppy disk drive slot on the front panel of your computer system. This plastic cover is held in place with two plastic clips. Simply pop it out of the bracket
3. Insert the PCI-bus expansion card that contains the PCMCIA drive (model no. PAC-SDD-O4A-V6.0) into your computer's PCI-bus expansion slot. Screw in a screw into the backplate of the PCI-bus PCMCIA drives to secure it to the case of your computer.
4. Slide the 3.5 FDD form-factor PCMCIA (model no. PAC-SDD-04B-V2.0) drive into the 3.5" floppy disk drive on your computer. Secure the drive with screws that screw into the mounting rails of The bracket.
5. Connect a power cable from your computer's power supply to the power connector on the rear of the 3.5" FDD form-factor drive.
6. Connect the 50-pin that cable from the PCI-bus PCMCIA card Drive (installed in step 3) to the 50-pin connector on the 3.5" FDD Form-factor drive. Use the cables' red edges to guide you.

The front/rear-mounted drive is now installed. Proceed to the software Installation section of the manual.

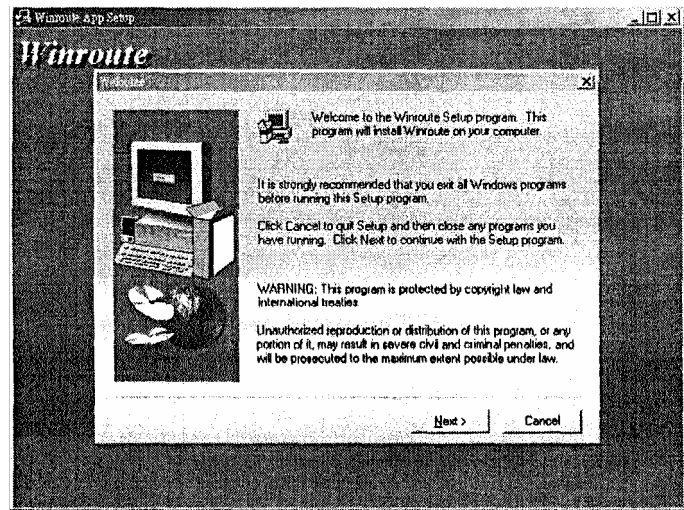
Softex WinRoute Software Installation (Windows 98/2000/Me/XP)

1. Insert the Softex Win Route CD-ROM into your computer's CD-ROM Drive and Auto-run Driver

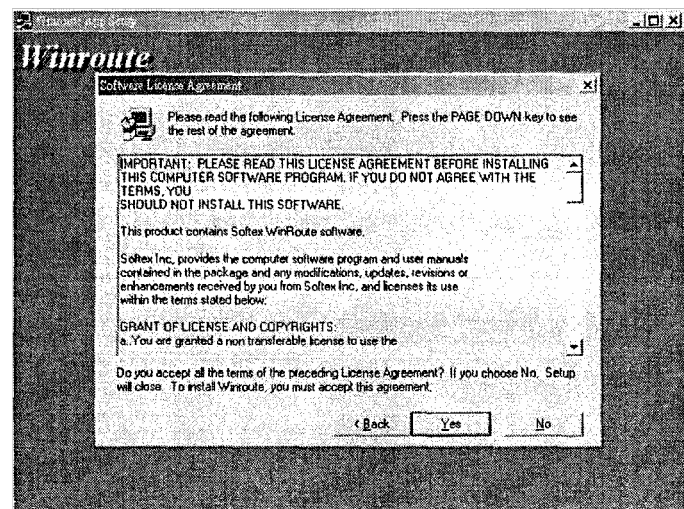


User's Manual

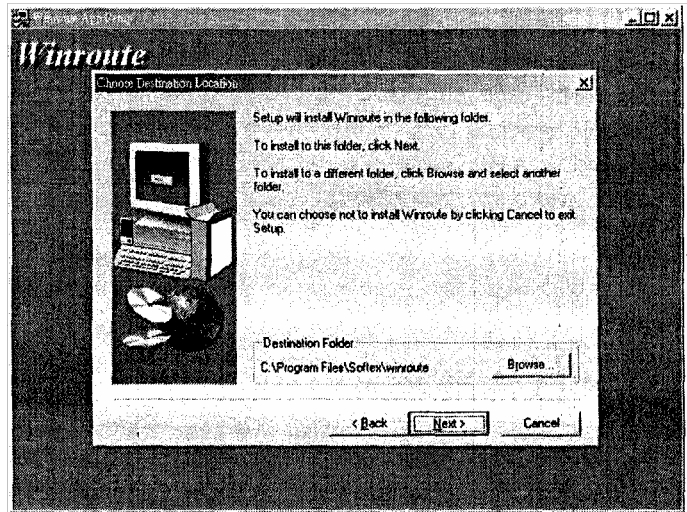
2. Click Next to advance to the next



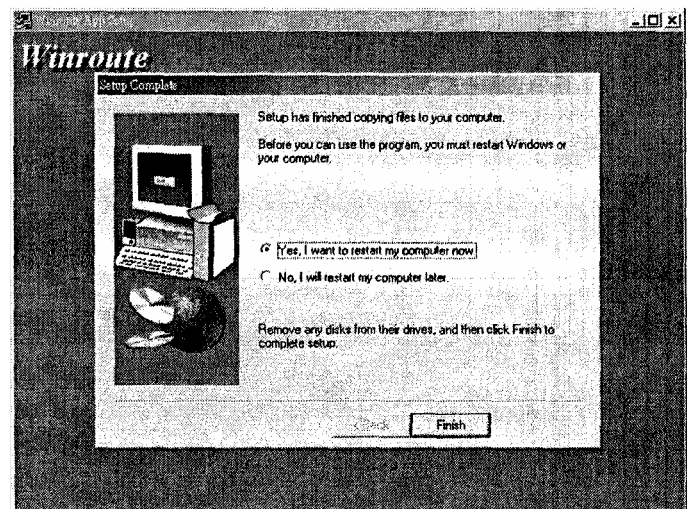
3. Click Yes to advance to the next



4. Click Next to advance to the next screen.



5. Click Finish



User's Manual

6. You must re-boot your computer in order to complete installation.
Your computer will re-boot.

Inserting a memory card (i.e., ATA Flash or ATA HDD card) into your PCMCIA slot will result in the card being mapped to your computer as a Drive and being assigned a logical drive letter. The following figure Shows a 40 MB ATA HDD card being mapped in Windows Explorer. The PCMCIA card is assigned letter E.

