

# PCA-6772 ISA VIA Half-sized CPU card with CPU, VGA/LCD, and 3 Ethernet

## Startup Manual

### Packing List

Before you begin installing your card, please make sure that the following materials have been shipped:

- 1 PCA-6772 all-in-one single board computer
- 1 startup manual
- CD-ROM or disks for utility, drivers, and manual (in PDF format)
- 1 power cable p/n: 1703808101
- 1 PS/2 KB/M cable p/n : 1700060202
- 1 COM port cable p/n :1700100250
- 1 Printer cable p/n :1700260250
- 1 VGA cable p/n :1701160101
- 1 FDD cable p/n :1701340603
- 1 EIDE cable p/n :1701400452

If any of these items are missing or damaged, contact your distributor or sales representative immediately.

Note: For detailed contents of the PCA-6772, please refer to the enclosed CD-ROM or disk (in PDF format).

### Specifications

- **CPU:** Onboard Eden 667 MHz (PCA-6772F-M3A2, PCA-6772F-M1A2) or VIA Eden 400 MHz processor (PCA-6772F-J3A2, PCA-6772F-J1A2)
- **BIOS:** Award 256 KB Flash memory
- **System memory:** One DIMM socket accepts 64 MB up to 512 MB SDRAM
- **2nd cache memory:** 64 KB on the processor
- **Enhanced IDE interface:** One channel supports up to two EIDE devices. BIOS auto-detect, PIO Mode 3 or Mode 4, UDMA 33/66/100 mode.
- **FDD interface:** Supports up to two FDDs
- **Serial ports:** Two serial RS-232 ports

For more information on this and other Advantech products, please visit our website at:

<http://www.advantech.com>

<http://www.advantech.com/epc>

For technical support and service, please visit our support website at:

<http://support.advantech.com>

This manual is for the PCA-6772 series, Rev. A1.

Part No. 200K677200

2nd Edition

May, 2004

- **Parallel port:** One parallel port, supports SPP/EPP/ECP mode
- **Keyboard/mouse connector:** Supports standard PC/AT keyboard and a PS/2 mouse
- **Power management:** Supports power saving modes including Normal/Standby/Suspend modes. APM 1.2 compliant
- **Watchdog timer:** 62 level timer intervals
- **USB:** Two universal serial bus ports

### Solid State Disk

- Supports one 50-pin socket for CFC type I/II

### VGA/LCD Interface

- **Chipset:** VIA Twister chip with integrated Savage4 2D/3D/Video Accelerator
- **Frame buffer:** Supports 8/16/32 MB frame buffer with system memory
- **Interface:** 4X AGP VGA/LCD interface, Support for 24 bit TFT
- **Display modes:**  
CRT Modes: 1280 x 1024@16bpp (60 Hz),  
1024 x 768 @16bpp (85 Hz);  
LCD/Simultaneous Modes:  
800 x 600@18bpp (60 Hz),  
640 x 480@18bpp (60 Hz)

### Ethernet interface

- **Chipset:** RTL 8139C Plus
- **Ethernet interface:** IEEE 802.3u 10/100BASE-T Fast Ethernet compatible
- I/O address switchless setting

### Mechanical and Environmental

- **Dimensions (L x W):** 185 x 122 mm (7.28" x 4.80")
- **Power supply voltage:** +5 V, +12 V  $\pm$  5%
- **Power requirements:**  
Max 4.5 A @ +5 V, 0.5 A @ +12 V  
typical 3.3 A @ 5 V, (with 256 MB DRAM, Ezra 800 MHz CPU)  
2.78 A @ 5 V, (with 256 MB DRAM, Eden 400 MHz CPU)
- **Operating temperature:** 0 ~ 60°C (32 ~ 140°F)
- **Weight:** 0.27 kg (weight of total package)

## Jumpers and Connectors

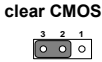
The board has a number of jumpers and connectors that allow you to configure your system to suit your application.

The tables below list the function of each jumper and connector.

### Jumpers

Label	Function
JP1	CMOS clear
JP2	LAN Vcc select
JP3	Watch-Dog output select
S1	Panel type select

Label	Function
JP1	CMOS clear
1-2	normal*
2-3	clear CMOS



Label	Function
JP2	LAN Vcc select
1-3, 2-4	normal power*
3-5, 4-6	WOL power

normal power\*



WOL power

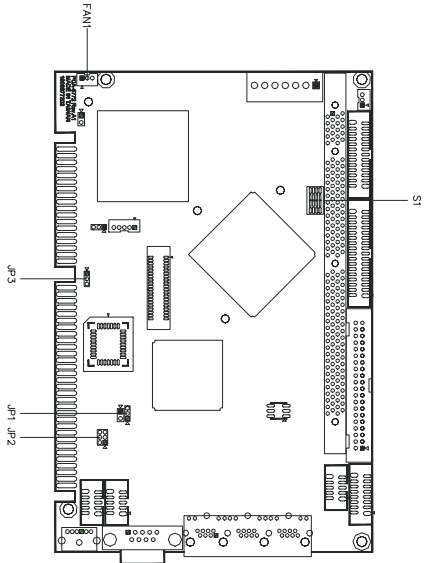


Label	Function
JP3	Watch-Dog output select
1-2	reset
2-3	IRQ11

reset\*



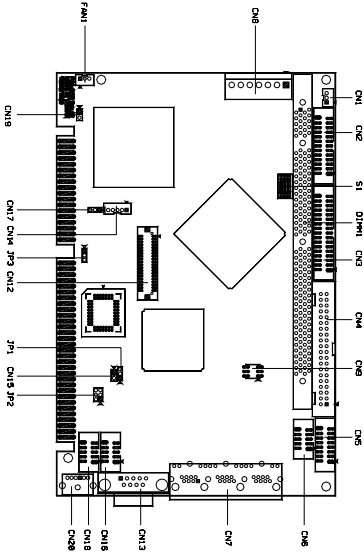
IRQ11



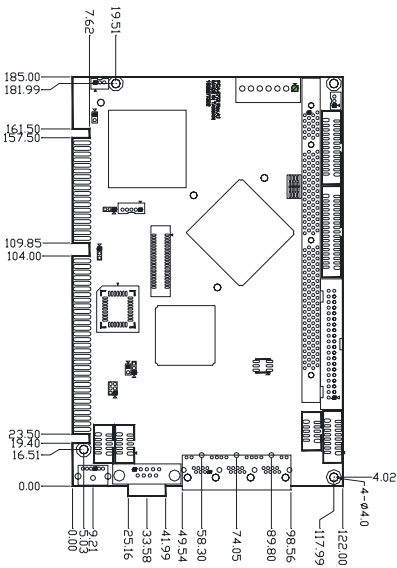
PCA-6772 Jumpers

### Connectors

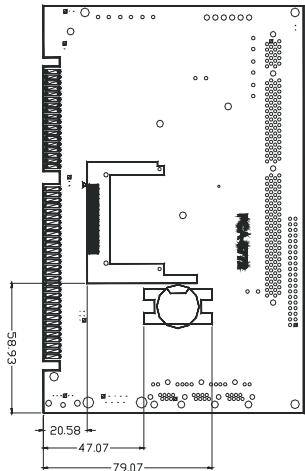
Label	Function
CN1	Suspend 5V and ATX PS_ON
CN2	Printer port
CN3	Floppy
CN4	Primary IDE
CN5	VGA output
CN6	USB1, USB2
CN7	LAN1, LAN2, LAN3
CN8	EBX Main power
CN9	Power LED and HDD LED
CN12	Panel connector
CN13	COM1
CN14	Panel back-light power
CN15	ATX power On/Off
CN16	COM2
CN17	Panel back-light VR
CN18	Audio AC97 signal
CN19	Reset
CN20	Keyboard/MS mouse
FAN1	CPU fan power



PCA-6772 Connectors



PCA-6772 Dimensions (component side)



PCA-6772 Dimensions (solder side)