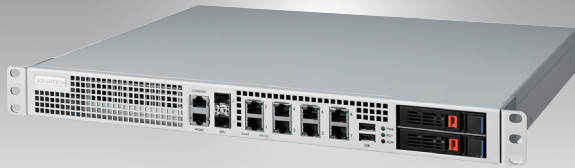


NCP-3110

1U Packetarium™ Network Processor Platform

Preliminary



Features

- Advantech Packetarium™ based Network Appliance
- Supports two 2.5" SATA HDD/SSD bays
- Eight 1GbE Ethernet RJ45 ports
- Two 10GbE SFP+ ports
- Four Metallic/LAN bypass pairs
- IEEE 1588v2 Support
- Synchronous Ethernet Support
- TurboDPI Support (optional)

Introduction

The NCP-3110 represents the entry level Advantech Packetarium™ network appliance. It integrates powerful and multi-core Packetarium™ network processing card for wire speed packet processing. The system supports up to 40Gbps I/O interfaces with Cavium CN6880 32 core 1.2GHz processor. The default system configuration features two 10GbE fiber SFP+, eight 1GbE copper RJ45, 1GbE management port, two USB sockets, a console port and two extractable 2.5" SATA SSD/HDD bays.

NCP-3110 supports precision clock synchronization mechanisms SyncE and IEEE1588v2, for time critical applications. SyncE features ± 4.6 ppm accuracy; on the other hand, IEEE1588v2 provides ± 100 ppm accuracy with the advantage of economical implementation cost. In addition, LAN bypass design prevents single point of failure on mission critical networks when custom-defined software or hardware events are detected.

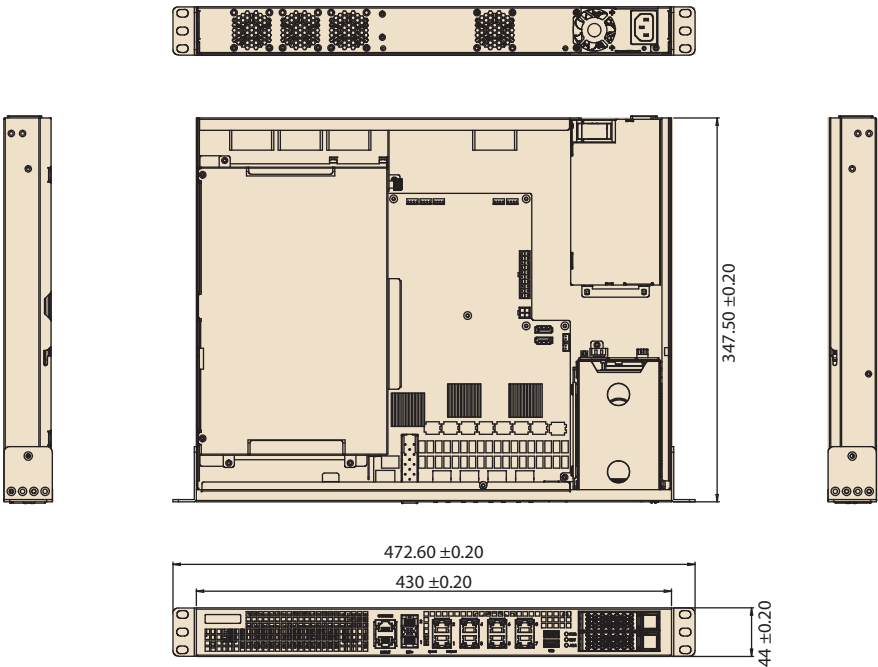
Cavium TurboDPI technology utilizes a hardware DPI engine for low latency pattern matching and delivers unprecedented packet processing performance. NCP-3110 is ideal for ODM enterprise applications such as content-aware applications, firewalls, UTMs, application-based routing and subscriber-based services.

Specifications

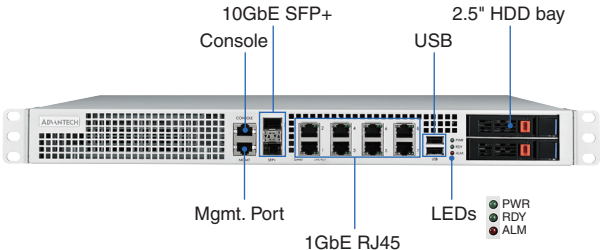
Processor System	Storage Interface Processor	Cavium CN6880
	Max. Speed	1.2 GHz
	Processor Cores	32cores
Memory		DDR3 16 GB (4 x 4 GB RDIMM) (Optional: 32GB)
Network Interface	I/O Board Information	8 x GbE RJ-45 2 x 10GbE SFP+
	Management Port	1 x GbE RJ-45
Storage System	Controller	1 x SiI3132
	Storage Interface	2 x 2.5" SATA2 HDD/SSDs 2 x USB2.0
I/O Interface	Serial Port	1 x RJ-45 type console port
Power	Type/Watt	AC: 200 W
	Input	AC: 100 ~ 240 V _{AC}
Cooling	Fan	4 x Smart Fans
Physical Characteristics	Dimension (W x H x D)	426 x 44 x 345 mm (16.8" x 1.7" x 13.6")
	Weight	5 Kg (11.02 lbs)
Environment	Temperature	Operating: 0 ~ 40° C (32 ~ 104° F) Non-Operating: -20 ~ 70° C (-4 ~ 158° F)
	Humidity	20% to 90% RH 5% to 95% RH
	Altitude	4000 m above sea level
Compliance	EMC/Safety	CE/FCC/UL/CB/CCC

Dimensions

Unit: mm



Front Panel



Compatible Packetarium™ Card

NCPB-2320-01	Cavium Octeon II CN6880
	32 Cores 1.2GHz
	1 x PCIe4
	2 XAU1 & 2 SGMIIx4 (or 4 XAU1)