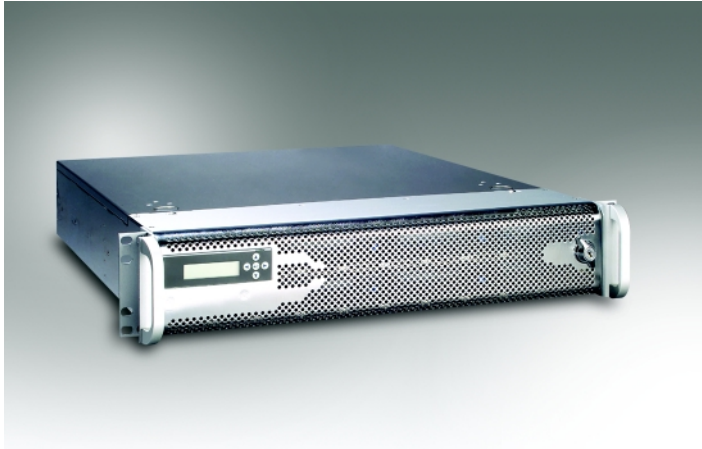


# NAS 2220

## 2U Network Attached Storage (NAS) Appliance with Eight Hot-swap IDE HDDs/Dual Gigabit LAN



### Features

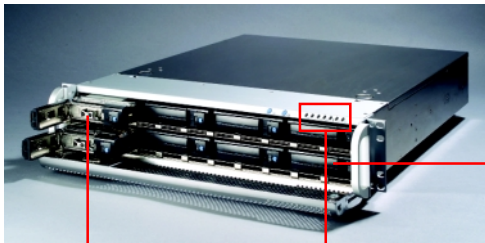
- Eight hot-swappable IDE hard drives
- Dual Gigabit Ethernet
- Windows, Unix/Linux, Netware and Macintosh multi-platform file sharing
- Supports RAID levels 0, 1, and 5
- User and share-level security
- LCD display module

### Introduction

The NAS 2220 is an ideal solution for consolidating current storage whilst adding incremental storage capacity to workgroups, offices, or enterprise networks. It connects directly to existing local area networks by offering simple management features thus conserving valuable IT resources. The NAS 2220 offers flexible configuration for a reliable storage system for networks. The system can be configured as individual independent disks, data protection can be provided via RAID 1 or RAID 5 (which supports hot-spare). The NAS 2220 includes security features such as user-level, share-level, local user,

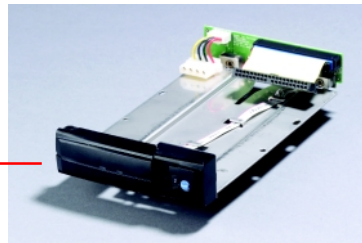
PDC and user quota which gives administrators the power to grant or deny access. It keeps private information away from prying eyes while providing unlimited access to public information.

Dual Gigabit Ethernet network connections provide maximum networking throughput performance and networking features such as automatic failover and port trunking.

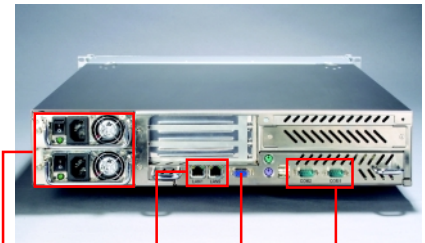


Eight 250 GB HDD = 2 TB (hot-swappable)

LEDs for AC IN, power, voltage alarm, thermal, fan, LAN1, LAN2



Easily installation HDD tray

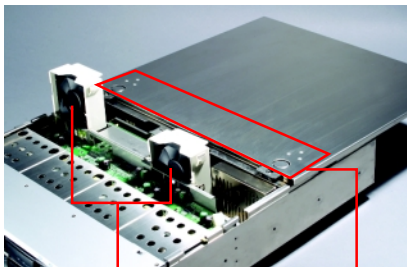


Redundant power supply

Dual Gigabit LAN ports

VGA port

Console port



Two 35.31-CFM hot-swap cooling fans

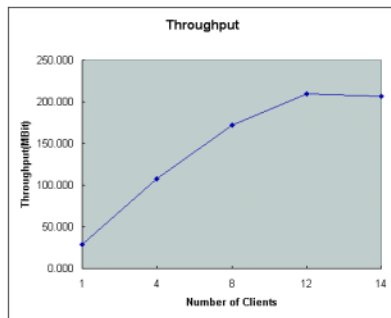
Easily open top-cover without screwdriver



No IDE cable design for good performance

Easily swappable riser card



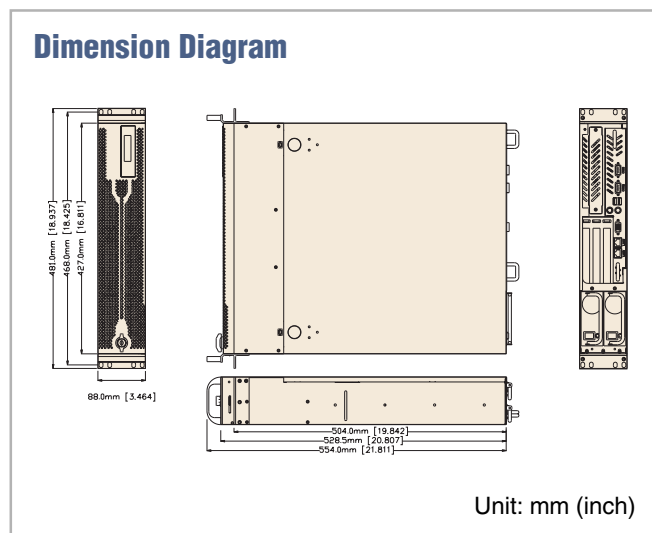


### Outstanding value with lower cost of ownership

- More cost-effective than a general purpose server
- No client license fees needed
- Fits your budget as well as your storage needs

### System Configuration –benchmark

Testing Program: Ziff Davis Media NetBench 7.0.2  
 Processor: Intel Pentium 4 - 2.4 GHz  
 Memory: 512 MB SDRAM  
 HDD: WD IDE x8, RAID 5  
 LAN: Gigabit Ethernet (full duplex) x2



## Specifications

Processor System	CPU	Intel®Pentium®4	
	Max. Speed	3.06 GHz	
	Chipset	ServerWorks ServerSet GC-SL	
Bus	Front Side Bus	533 MHz	
	PCI	64-bit/66 MHz	
Memory	Technology	DDR-266 registered SDRAM with ECC	
	Max. Capacity	4 GB	
	Socket	184-pin DIMM x3	
Ethernet	Interface	10/100/1000Base-TX x2	
	Controller	Broadcom 5704	
	Connector	RJ-45 x2	
Drive Bay	3.5" HDD	8 (hot-swap, ATA 100 IDE)	
Cooling	Fan	2 (hot-swap, 35.31 CFM/each)	
Management	Indicator	LED for AC IN, power, voltage alarm, thermal, fan, LAN1, LAN2	
Miscellaneous	Control	Power on, mute	
Power Supply	Watt	350 W ATX (1+1 redundant, 350 W/each)	
	Input	AC 90 ~ 264 V @ 47 ~ 63 Hz, full range	
Environment	Temperature	Operating	Non-Operating
		0 ~ 40 °C (32 ~ 104 °F)	-20 ~ 60 °C (-4 ~ 140 °F)
	Humidity	5 ~ 95 % @ 40 °C (104 °F)	5 ~ 95 %
Physical	Dimensions (W x H x D)	482 x 88 x 517 mm (19" x 3.5" x 20.4")	
	Weight	10 Kg (17.6 lb) (w/o HDDs)	

## Software

Network Transport Protocol	TCP/IP; IPX; NetBEUI; AppleTalk
Network File Protocols	Microsoft Networks (CIFS/SMB); Unix (NFS); Apple (AFP); Novell (NCP); Internet (HTTP 1.0); File Transport Protocol (FTP)
Network Security	Integrates with Microsoft NT Domain Controller (PDC); Novell Netware Server (Bindery); Apple (AFP); Unix Netware Information Service (NIS); Local account list User-level, Share-level security
Client Platform	Microsoft Windows 95/98/NT 4.0/2000/Me/XP; Novell IntraNetware clients; Microsoft Netware clients; Apple Macintosh System 7.5.5, 7.6, OS 8.x, 9.x, X; Solaris 7, 8; HP-UX 11; AIX 4.3.3; SCO UnixWare 7.1.1; RedHat Linux 6.2, 7.0, 7.1
IP Address Assignment	Supports DHCP/BOOTP/RARP or Static IP
RAID File System	Non-RAID (Individual Independent Disk); RAID 0 (Disk Striping); RAID 1 (Disk Mirroring); RAID 5 (Disk Striping with Parity); RAID 5 with hot spare
System Management	Web-based administration; SNMP MIB II; Disk Space Quotas
Setup and Configuration	Web-based user interface for system administration; supports English, Typical Chinese, Simplify Chinese

## Ordering Information

Part Number	Processor	DRAM	Power Supply	Software OS
NAS 2220	--	--	350 W ATX (1+1 redundant, 350 W/each)	Embedded kernel pre-installed in DOM

\* HDDs are not included

CompactPCI Enclosures 1

CompactPCI Boards 2

CompactPCI Peripherals 3

Blade Servers 4

Network Appliances 5

e-Server Systems 6

Storage Subsystems 7

Industrial Computer Chassis 8

Full-sized CPU Cards 9

Passive Backplanes 10

Industrial Computer Peripherals 11