

The logo features a stylized orange Wi-Fi symbol consisting of three curved lines above a central dot, positioned above the letter 'i' in the word 'MobiPanel'.

MobiPanel™

MPC-100

USER GUIDE



Version 1.0.0

REGULATORY NOTICES

Federal Communications Commission Notice

This equipment has been tested and found to comply with the limits for a Class B digital devices, pursuant to Part 15 of the FCC Rules. These limits are designed to provide reasonable protection against harmful interference in a residential installation. This equipment generates, uses, and radiates radio frequency energy and, if not installed and used in accordance with the instructions, may cause harmful interference to radio communications. However, there is no guarantee that interference will not occur in a particular installation.

CAUTION!

-  CAUTION! Danger of explosion if an improper battery is substituted. If a replacement is needed, only replace with a manufacturer issued battery pack.
-  Do not dispose of the battery pack in a fire. They may explode. Check with local authorities for proper disposal instructions.

ESD WARNING!

The USB function may break down during electrostatic discharge interference. Please suspend or reset the system to enable the USB function.

TABLE OF CONTENTS

1. Getting Started

- 1.1 Welcome
- 1.2 Safety Instructions and Care of your MobiPanel
- 1.3 Checklist
- 1.4 Getting to Know Your MobiPanel
- 1.5 The Battery and AC Adapter
 - 1.5.1 The Battery Swap
- 1.6 The Stylus
- 1.7 Using the PCMCIA Slot and CompactFlash Cards
- 1.8 MobiPanel Buttons
- 1.9 Function Key Definition
- 1.10 RS232/422/485 Setting
- 1.11 Display Properties
- 1.12 The Cradle (Optional)
- 1.13 The Carry Case (Optional)
- 1.14 The Auto Adapter (Optional)
- 1.15 The Vehicle Mount (Optional)
- 1.16 The Mini VGA cable (Optional)
- 1.17 The Standard Battery Pack (Optional)
- 1.18 The 3 in 1 Charging Station (Optional)
- 1.19 The Stylus (Optional)

2. Managing Your Information

- 2.1 Data Input
- 2.2 Data Synchronization
- 2.3 Applications

3. Connecting Other Devices

- 3.1 USB Keyboard and Mouse
- 3.2 External Microphone
- 3.3 External Speakers
- 3.4 External Display (Optional)

4. Getting Online

- 4.1 Establishing a Dial-up Connection
- 4.2 Connecting to Your Network
- 4.3 Ending a Connection
- 4.4 Setting up Your Email

5. Troubleshooting

- 5.1 Common Problems / Frequently Asked Questions
- 5.2 Handwriting Recognition

USER GUIDE



1. Getting Started

1.1 Welcome

Congratulations! With your new MobiPanel you will be able to create, manage and share information, send and receive email, and carry out research from virtually anywhere! Your MobiPanel gives you freedom; easy access to the Internet, and the 800 x 600 SVGA screen offers high resolution for all your Tablet uses.

This manual will guide you through the Tablet's simple set-up, introduce you to its range of features and help you source extra information.

1.2 Safety Instructions and Care of your MobiPanel

-  **CAUTION!** Danger of explosion if an improper battery is substituted. If a replacement is needed, only replace with a manufacturer issued battery pack.
- During normal usage and charging, the battery pack heats up. This is caused by energy that has been generated and a chemical charge that has occurred inside the battery pack. This is normal and not a cause for concern.
 - You should charge batteries at temperatures from 10°C to 30°C (from 50 °F to 85 °F). Lower temperatures require a longer charging time.
 - Do not carry a battery in your pocket, purse, or other container where metal objects could short-circuit the battery pack. The resulting excessive current flow can cause extremely high temperatures and may result in damage from burns.
 - Do not use your MobiPanel in a wet environment, for instance, near a bathtub, sink, or any other place where there is risk of moisture.
 - To help prevent electric shock, plug the AC adapter into a three prong, grounded power source. If a two-prong extension plug is absolutely needed, use a 3-wire cable with properly grounded plugs.
 - If your MobiPanel includes a modem PC Card, disconnect the modem cable during electrical storms to avoid the remote risk of electrical shock from lightning via the telephone line.
 - PC Cards may increase in temperature over an extended period of use. Use care in handling these cards.
-  Do not dispose of the battery pack in a fire. They may explode. Check with local authorities for proper disposal instructions.
- When traveling, never check your MobiPanel as baggage. You can put your MobiPanel through an x-ray security machine, but never put your MobiPanel through a metal detector. Have a charged battery with you in case you are asked to turn on the Tablet.

- When traveling, do not place the MobiPanel in an overhead compartment where it can slide around. Do not drop your MobiPanel or subject it to mechanical shocks.
- Protect your MobiPanel from environmental hazards such as dirt, dust, food, liquids, temperature extremes, and over exposure to sunlight.
- When you change environments rapidly, in respect to temperature and humidity, with your MobiPanel, condensation may form on or within the Tablet. To avoid potential damage to your MobiPanel, allow sufficient time for the moisture to evaporate before using.
- When disconnecting cables from your MobiPanel, be sure to pull on the connector or the strain relief loop, not on the cable itself. As you pull, keep it evenly aligned to avoid bending the connector pins. Never force a connector into a port. Make sure the connector and port are aligned correctly.
- Before you clean your MobiPanel, turn it off, remove the battery, and unplug the power source.
- Clean your computer with a soft cloth dampened with water rather than with liquid or aerosol cleaners.
- Clean the screen with a soft, clean cloth and commercial window cleaner that does not contain wax or abrasives. Always apply the cleaner to the cloth, not the screen. If the display contains grease or some other contaminant, use isopropyl alcohol instead of commercial cleaner.

1.3 Checklist

Check to see that the package your MobiPanel came in includes these items:

- MobiPanel

Accessory box contains,

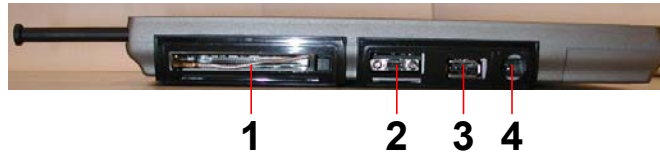
- Battery Pack
- Stylus x 2
- Synchronization Cable
- AC Adapter
- Power Cord

1.4 Getting to Know Your MobiPanel

Your MobiPanel features powerful functions and connectivity choices for you to create, manage and transfer your information, send and receive email and explore the World Wide Web. This section outlines your MobiPanel's components.

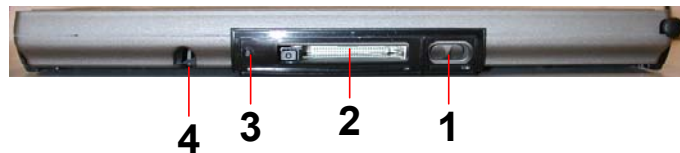
Left Side

1. PCMCIA Slot
2. Mini-VGA Connector
3. USB Connector
4. DC-In Port



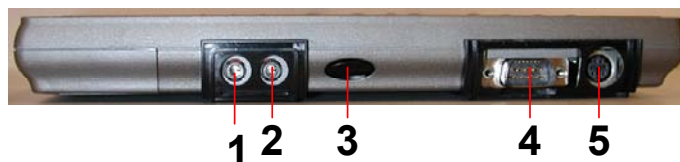
Top Side

1. Suspend Switch
2. CompactFlash™ Card / IBM Microdrive™ Slot
3. Software Reset Button
4. Stylus Storage



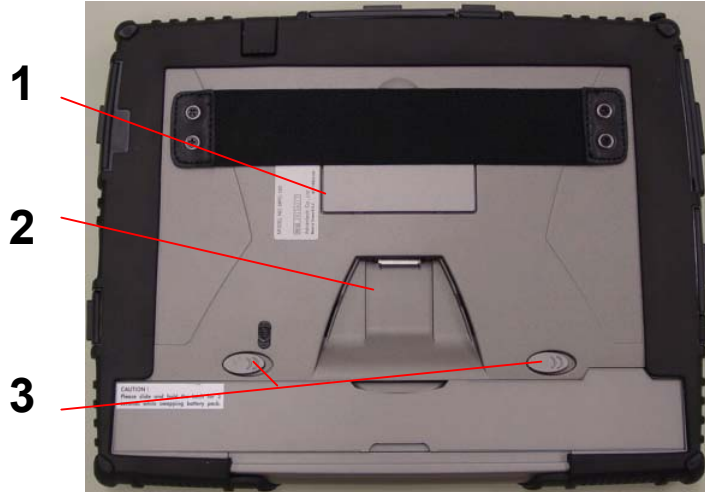
Right Side

1. External Microphone Jack
2. External Speaker Jack
3. Infrared Port (IrDA)
4. RS232/422/485 (By DIP switch setting)
5. PS2 port



Back

1. Cover to Hardware Reset Button
2. Cradle Dock / Synchronize Cable Port
3. Battery Latches



Front

1. Function Keys Area (Please refer to Section 1.8 for detail)



1.5 Battery and AC Adapter

Your MobiPanel has two power sources, battery and AC. To run your MobiPanel from the wall, use the supplied AC adapter cable only. The battery offers you unplugged convenience, with as much as 5 hours of battery life. The battery charges when the Tablet is connected to the AC power. The orange indicator on the front of your MobiPanel indicates the battery's status.

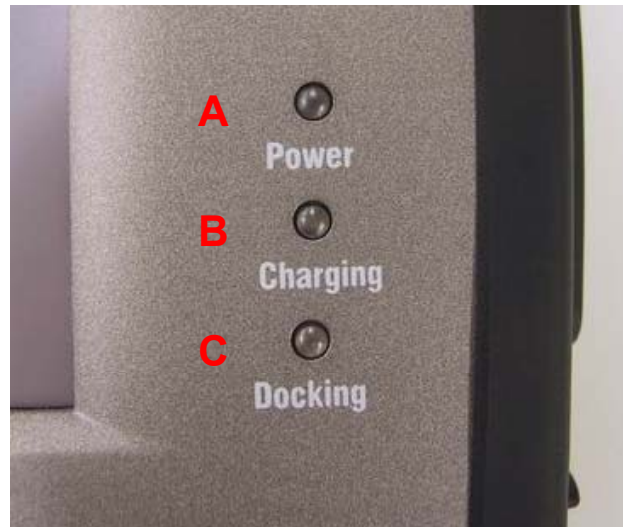
Charging Time with standard battery pack:

2 hours fast charge mode (system off)

2.8 hours normal charge mode (system on)



- Indicator A; On: Operating mode, Off: Suspend mode
- Indicator B; On: Charging, Off: Fully charged or not charging
Blinking: Low Battery (Less than 6% charge remaining)
- Indicator C; On: On the Cradle (Docked)

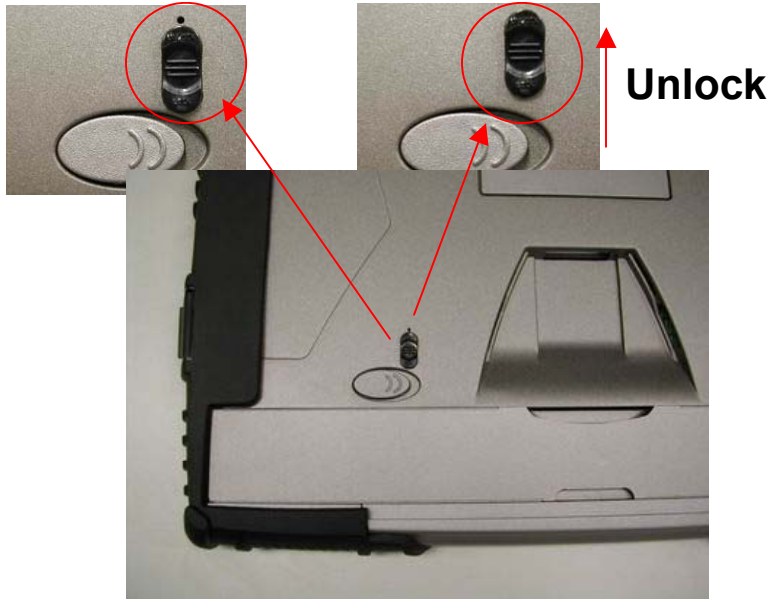


When fully charged and not in use, your MobiPanel battery has a one week life. When turning on your MobiPanel and it goes to suspend immediately, that means the battery volume is 0%. Please charge your Tablet within one day, or you will lose all data in memory.

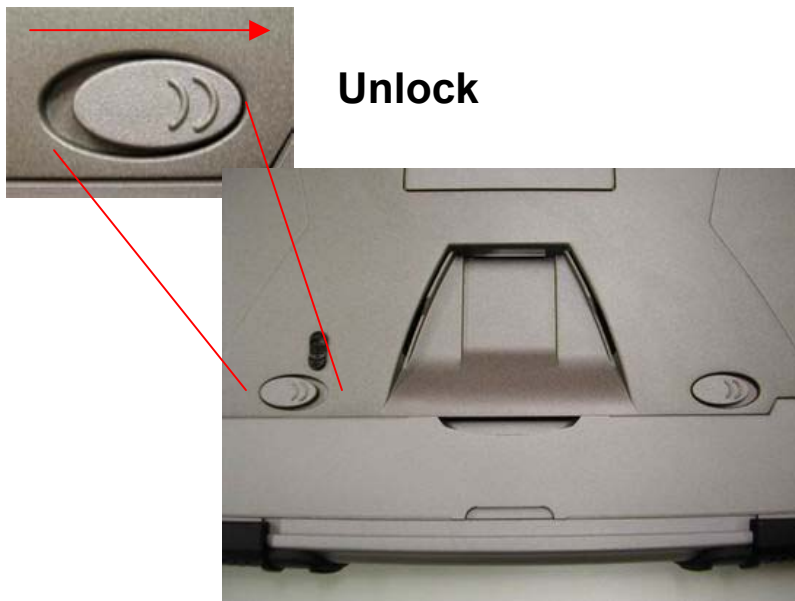
1.5.1 Battery Swap

If you want to swap the battery pack, please follow the steps below.

1.Unlock the battery lock button.



2.Push the battery latch to the unlock mode, the MobiPanel will suspend after 3 seconds. *(Note: please keep suspend period for 3 seconds to ensure the data safety)*



3. Users can then remove or change the battery pack and plug back in a charged battery within 5 minutes, or all data in memory will be lost.

To check battery level or adjust the time before your battery switches off after the Tablet is continuously idle, go to **Start→Settings→Control Panel→Power**.

For further tips on optimizing your battery, go to **Start→Help→Settings→Power**.

1.6 The Stylus

The Stylus has been specially designed for use with your MobiPanel.



IMPORTANT: It is strongly recommended that you use the provided stylus at all times; fingers or other instruments may damage your screen.

If you find that your MobiPanel is not responding properly to your taps, you may need to recalibrate your screen. To do this, go to **Start→Settings→Control Panel→Stylus**. Once there, go to the calibration tab and follow the instructions.

Your stylus can be conveniently stored in the side of your MobiPanel.

1.7 Using the PCMCIA Slot and CompactFlash Cards



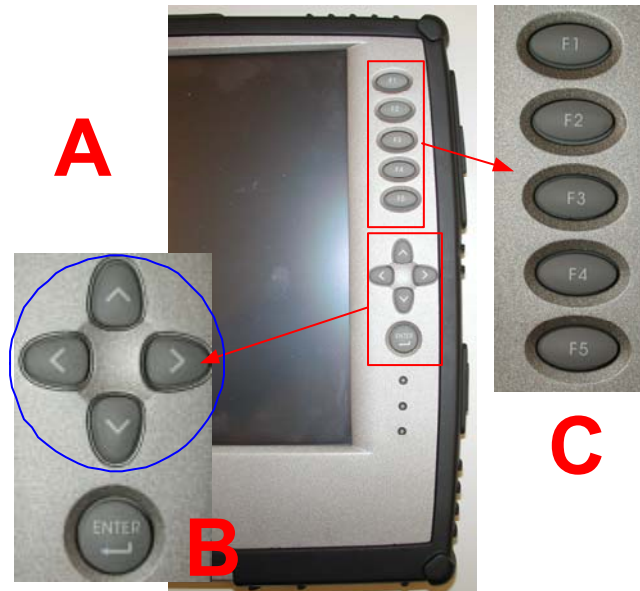
The PCMCIA slot is a universal interface for many different hardware peripherals. This slot can accommodate any PC Card that is supported by Windows CE 3.0. One of the key uses for this slot is the wireless lan card, which will be discussed further in this document.



The CompactFlash slot, shown above, is a Type II slot that can accommodate any IBM Microdrive™ and Type I and Type II CompactFlash card that is supported by Windows CE 3.0.

1.8 MobiPanel Buttons

The buttons on the front of your MobiPanel give you greater navigational control.



The A group buttons function as arrow keys, but can also be used as a mouse. These keys as well as the B key will wake up the MobiPanel from the ‘suspend’ mode.

A – Arrow key functionality and mouse functionality

B – Enter key and Launch Dial Button – opens the launch dial program.

C – Function key (from F1 to F5, refer to Section 1.9 for definition)

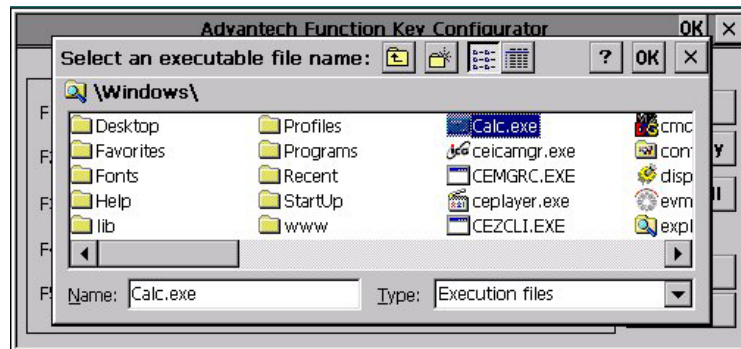
The ON/OFF switch on the side of your MobiPanel, when in the OFF position, ensures that the Tablet isn’t accidentally turned on. Sliding the switch to the ON position allows the Tablet to resume operation.

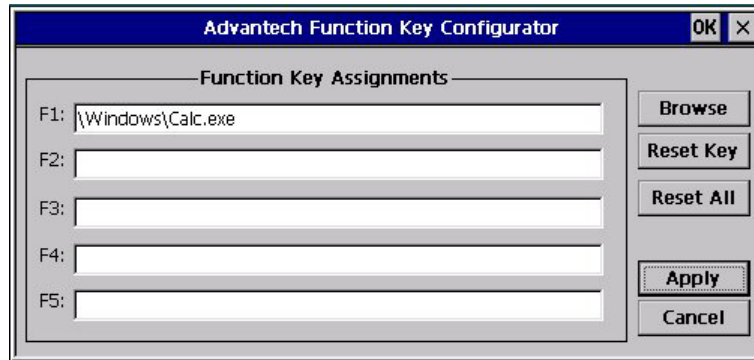
1.9 Function Key Definitions

The MobiPanel has a built-in function key utility for function key definitions. Users can double-click the icon – fkeycfg, or just press any one of the undefined function keys for configuration.



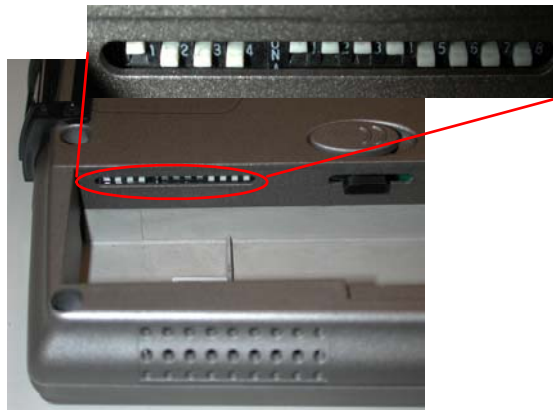
Users can choose the icon Browse to select the target application (eg. Calc.exe), or just type the full path of the application in the text column. The icon Reset Key is reset to one of the function key definitions where the cursor is located, and the icon Reset All clears all of the function keys. (Advantech also can provide the service to pre-define the function keys customers specify, before shipping.)





1.10 RS232/422/485 Setting

The RS232/422/485 setting is controlled by a set of dip switches, the dip switch can be seen after removing the battery pack as shown in the figure below.



RS232:



RS422



RS485



1.11 Display Properties

This function allows you to set the background on your desktop, and the colors displayed on your interface. To access these functions, go to

Start→Settings→Control Panel→Display→Background

1.12 Cradle (Optional)

The cradle lets you ‘dock’ your MobiPanel, making it easy to use at your desk, to read information, or to add peripherals such as a keyboard or a mouse.

I/O Ports:

USB host controller supports 2 USB ports

RJ-45 for Ethernet port

2 x PS/2 connector

1 x USB Type A connector to synchronize with PC

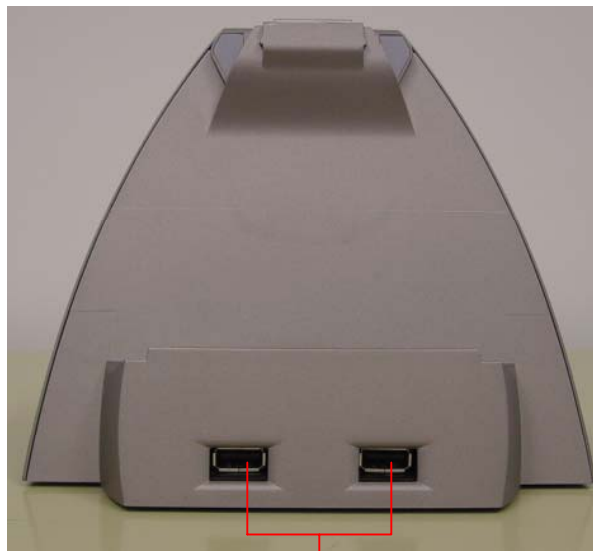
1 x DC-in jack



PS/2

USB B Type

RJ-45



USB



DC in



In addition, the cradle increases your connectivity, with USB Type A and B (for synchronization with your PC) ports [4 A-Type and 1 B-Type] as well as PS/2 support for a keyboard and mouse. By removing the insert in the cradle's pocket (by sliding the insert to the right and lifting it up), the cradle can accommodate MobiPanels with the extended battery.

1.13 Carrying Case (Optional)

The Carrying Case is designed for easy carrying and spill & dust resistance. This carrying case includes hand strap, detachable shoulder strap, carry handle, and penholder. Users can easily view and touch the monitor, press 5 function keys, and swap the battery pack even when the web tablet is put in the case. In addition, the carry case can be stand on a desk.



A Stand



Battery Swap

1.14 Auto Adapter (Optional)

The Auto Charger provides an in-vehicle power charger for the MobiPanel.

Input: DC 12 V/24 V

Output: 60 W



1.15 Vehicle Mount (Optional)



Besides indoor use and in-field use, you can use the MobiPanel in a vehicle for logistics, transportation, dispatching and so on. The vehicle mount provides industrial strength protection against shock, impact, and vibration from the vehicle.

You can adjust the viewing angle of the MobiPanel in the horizontal and vertical direction to fit different needs. MobiPanel can hold the desired viewing angle when the vehicle is on road because of the robust design. The keyboard plate allows you to use keyboard in the vehicle.

1.16 Mini VGA cable (Optional)

You can use this cable to connect devices with a standard VGA port, such as a monitor or projector, to the mini-VGA port on your MobiPanel. Users can then operate and use the MobiPanel with other display devices.



1.17 Standard Battery Pack (Optional)

Allows you to swap the battery during suspend mode. It will increase the usage time of the MobiPanel on site.



1.18 3 in 1 Charging Station (Optional)

The 3 in 1 Charging Station can charge three standard battery packs at the same time. The standard battery charging time is 3.5 hours for either one or three battery packs. The 3 in 1 charging station requires the power adapter in the accessory box of the MobiPanel.



1.19 Stylus (Optional)

The Stylus has been specially designed for use with the MobiPanel.



2.Managing Information Data Input

2.1 Data Input

Your MobiPanel features a variety of data input methods, so users can choose, and change, according to their needs:

- Handwriting Recognition.
- A Software Keyboard.
- An External Keyboard.

Software Keyboard

To access the Software Keyboard, click the handwriting recognition icon on the taskbar. Once this application comes up, click the keyboard icon in the top left corner of the frame.

The Software Keyboard functions like a real keyboard. The ‘CAP’ key locks the keys to uppercase; the ‘Shift’ key switches the keys to uppercase with one click only; shortcut keys, such as ‘Copy’ (Ctl+C) are controlled by touching the ‘Ctl’, then the relevant key.

Once finished with the keyboard, click the ‘Close’ icon in the top right corner of the keyboard window.

External Keyboard

Attaching an external keyboard via the USB or PS/2 port of the Tablet, or through the cradle, overrides any other input selection. Make sure the keyboard is supported by Windows CE 3.0 or comes with Windows CE 3.0 drivers. See [Section 3.1](#).

2.2 Data Synchronization

To share information between your MobiPanel and your PC/Laptop, you need to establish a direct PC Connection. There are two ways to make direct connection. The default way is through a USB interface.

The installation procedure is:

1. To make the connection, you will need to install ActiveSync 3.1 (or higher) software to your PC/Laptop. To download this freeware, go to <http://www.microsoft.com/mobile/downloads/activesync.asp>
2. Use the synchronization cable to connect the PC/Laptop and Tablet. Both PC/Laptop and Tablet will detect the connection and launch the counterpart software to make the connection.

3. When initiating the connection, there will be a pop-up windows showing: "Set Up a Partnership". Please select "No" and "next". Now you have established the connection successfully.

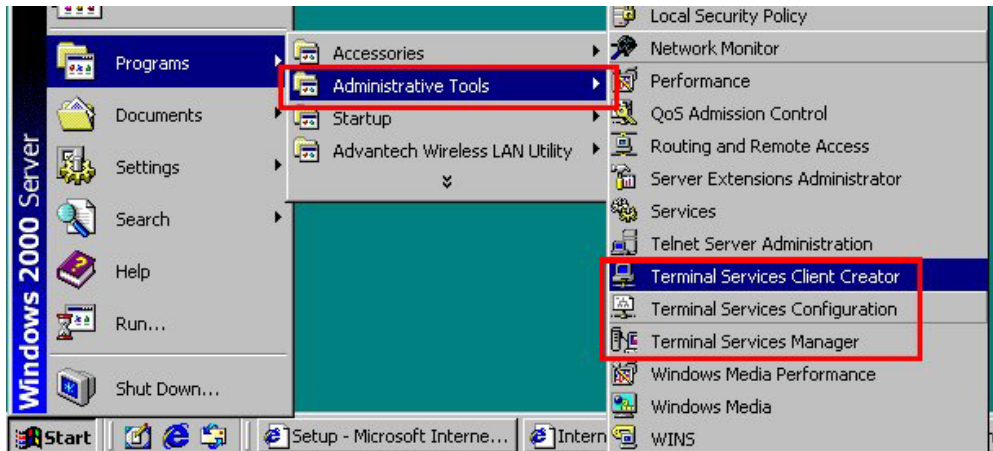
The other way to make the connection is through IrDA. To switch between connection interfaces, go to **Start→Settings→Control Panel → Communication →PC Connection**, and follow the instructions. Place your Tablet and the target device in line of sight of each other and within 1 meter apart. Then go to **Start→Programs→Communication→IR Sync** to make the connection.



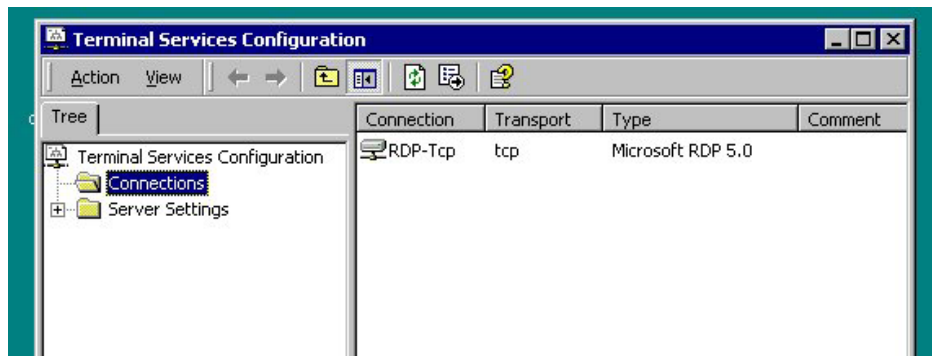
2.3 Applications

Microsoft RDP

Make sure you have Windows NT terminal server / Windows 2000 server which can support the Terminal Service on the server. Please also make sure that the server and MobiPanel can both connect to the access point.



Execute **Programs**→**Administrative Tools**→**Terminal Services Configuration** at Server side



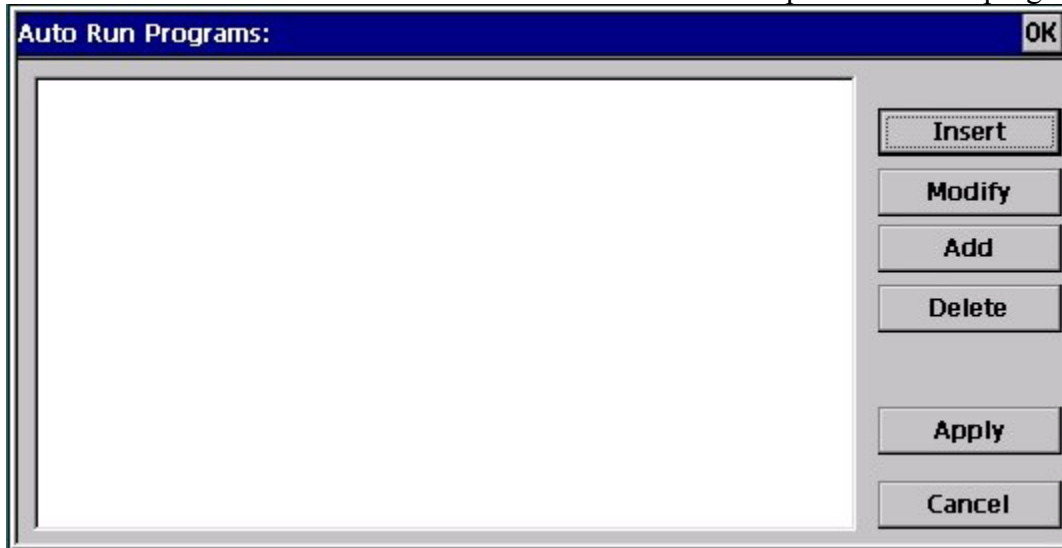
Execute **Programs**→**Communication**→**Microsoft RDP** at Client (Window CE) side, and input the Server IP in the **Terminal Server Client** window, then press **connect**. Go through the formal login process, the window will be shown exactly like in the server screen.

Advantech Autorun application

AutoRun.exe is an auto launch program used to launch applications after system reboot.

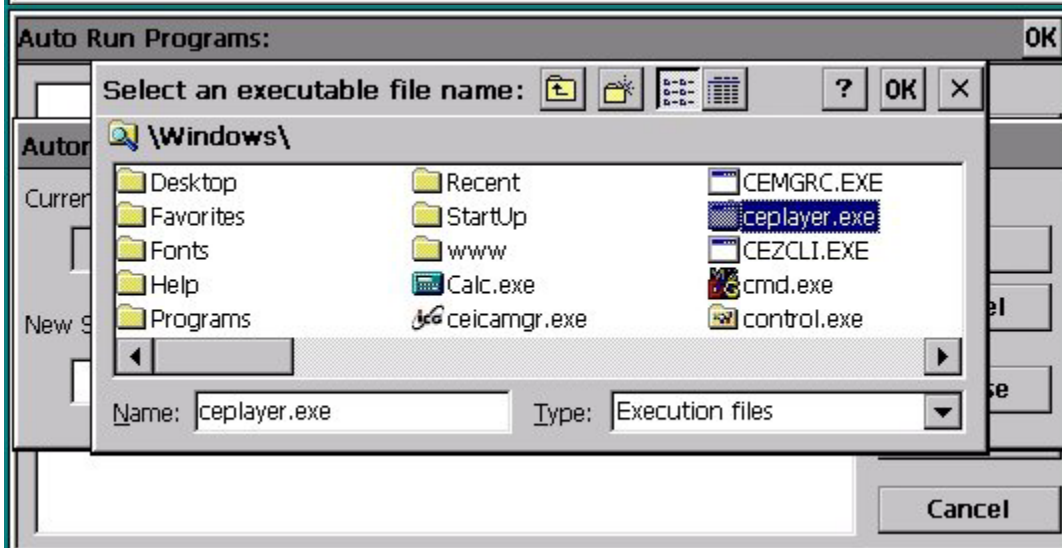
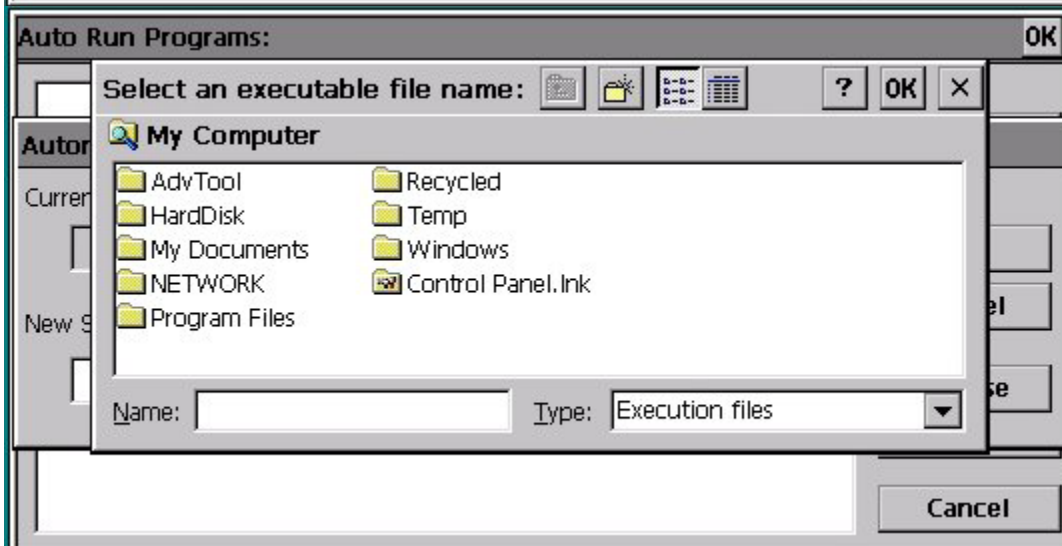
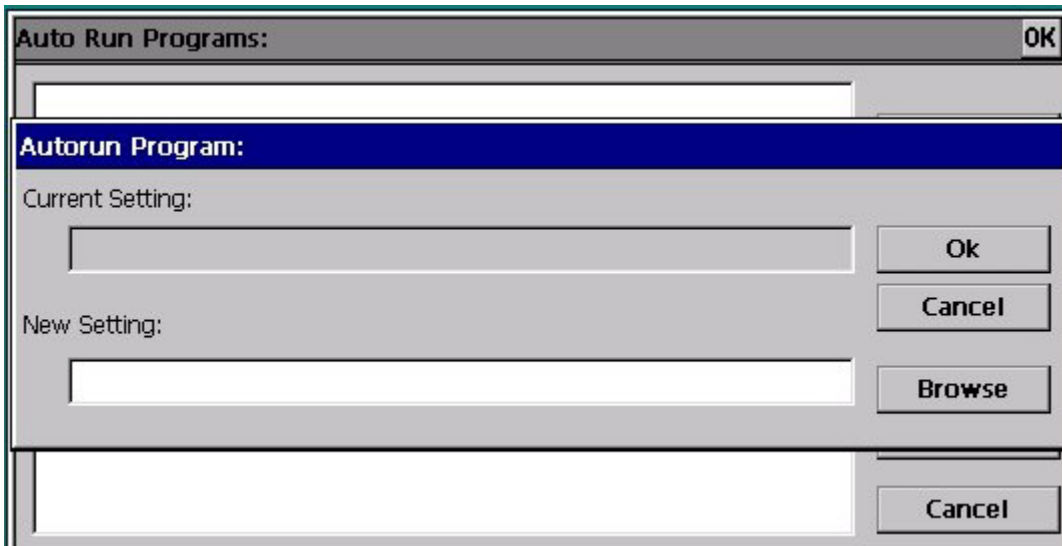
The user interface program AutorunUI.exe can be used by the reseller / end user to configure auto launch programs. The method to use AutorunUI.exe is described as below :

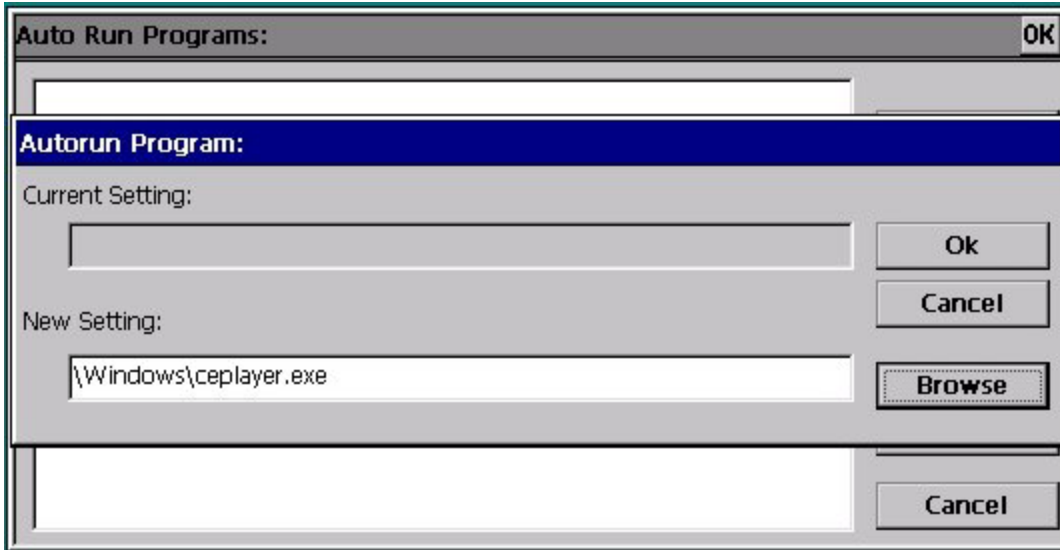
1. Double click the icon of AutoRunUI.exe on the desktop to launch the program.



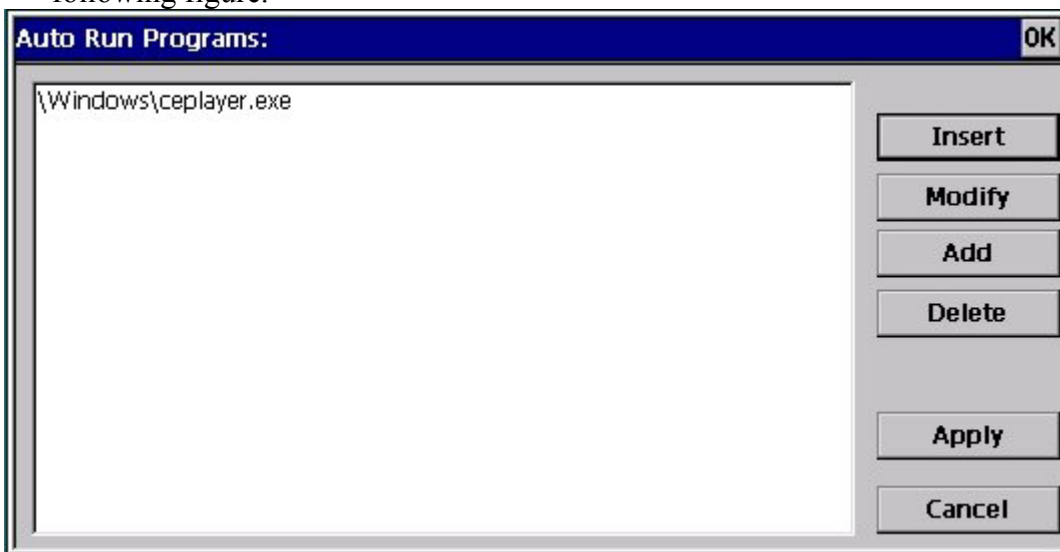
There are six buttons on the right of the dialog. "Insert" and "Add" are used to add items in the list box. "Modify" and "Delete" are used to modify and delete the existing items in the list respectively.

2. When the user presses "Add", the Autorun Program dialog appears. Users can type in the path of the program you want to launch in the "New Settings" edit box. Alternatively, the user can press the browse button to specify the program.





After pressing “Ok” in the Autorun Program dialog, the item you specified in the edit box will appear in the list box of the Autorun programs dialog as shown in the following figure.

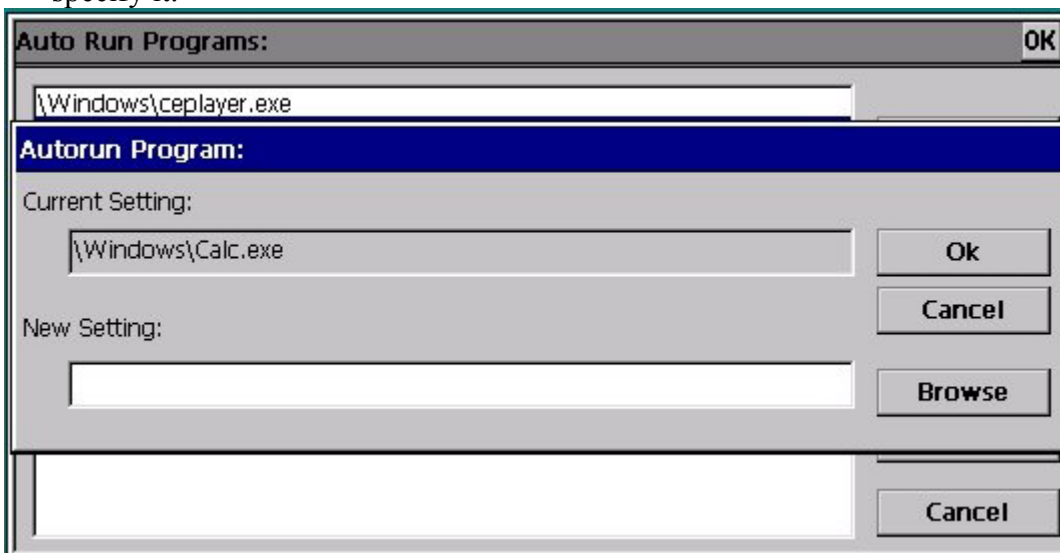


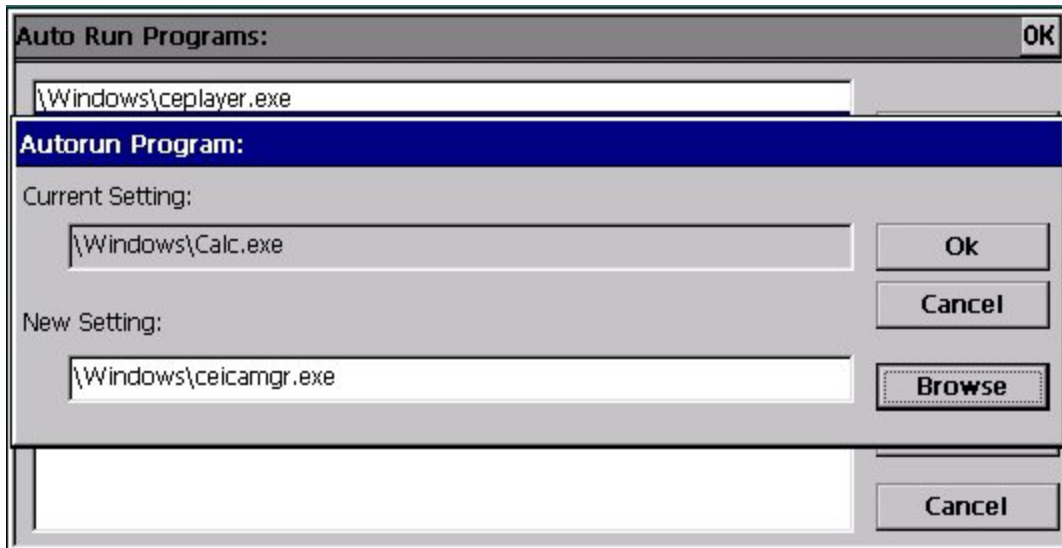
The difference between “Insert” and the “Add” button is: “Insert” button can be used to insert items between existing items in the list box, whereas “Add” button is used to add items in the rear of the list.

3. The “Modify” button is used to modify the existing items in the list box as shown below. Users can choose an item in the list box, and press “Modify”.

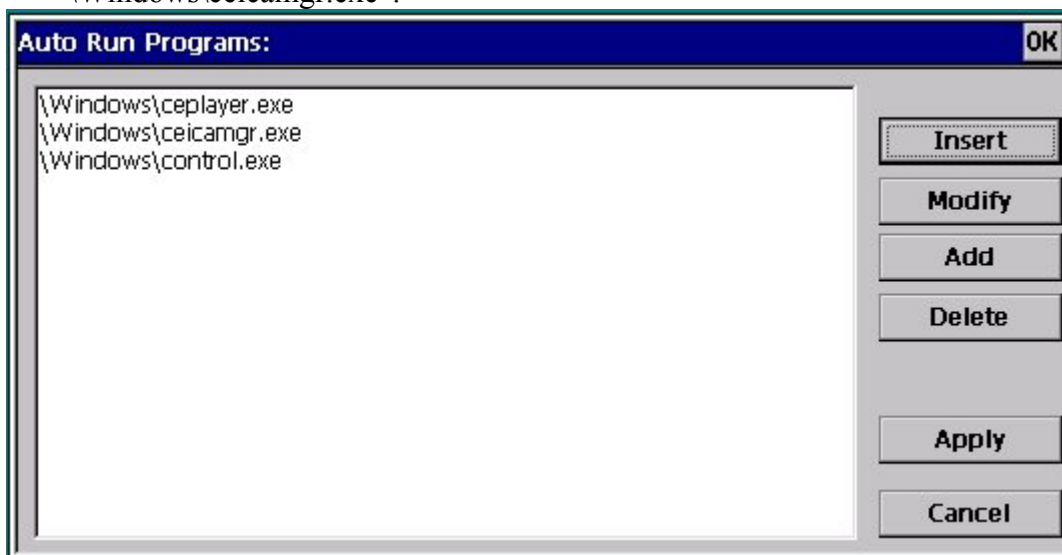


The Autorun Program dialog will then appear, users can type in the path of the program they want to replace the existing item in the edit box, or press “Browse” to specify it.





After pressing “OK”, the item “\\Windows\\Calc.exe” is replaced by “\\Windows\\ceicamgr.exe”.



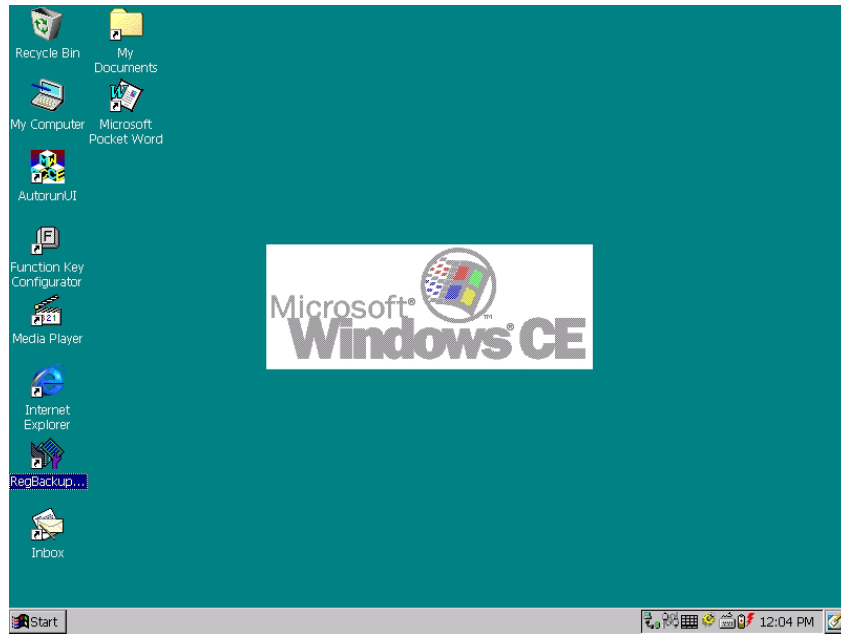
4. After specifying all the items, press “Apply” to save the setting or press “Cancel” to discard the setting.

Registry Backup

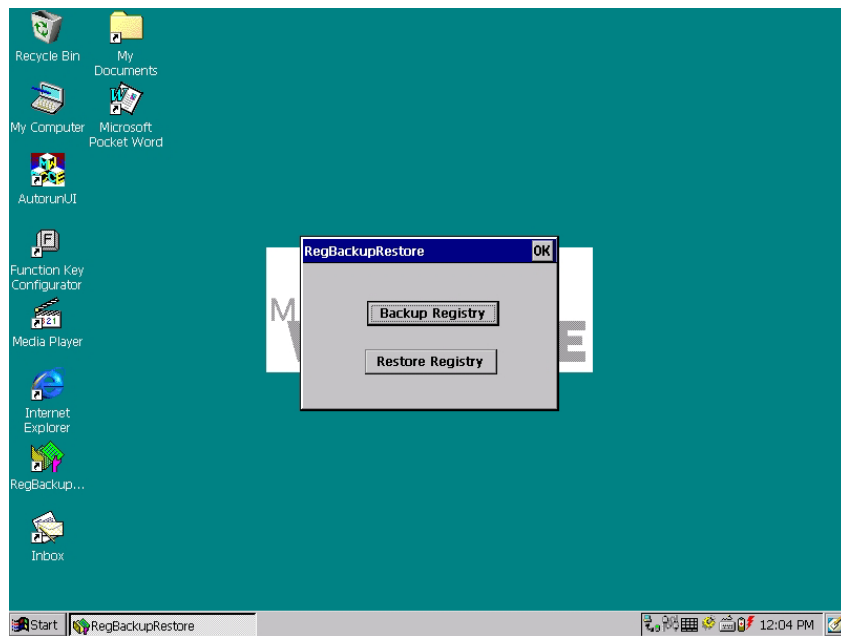
RegBackupRestore is an utility used to backup and restore system registry.

(1) Steps to Backup registry:

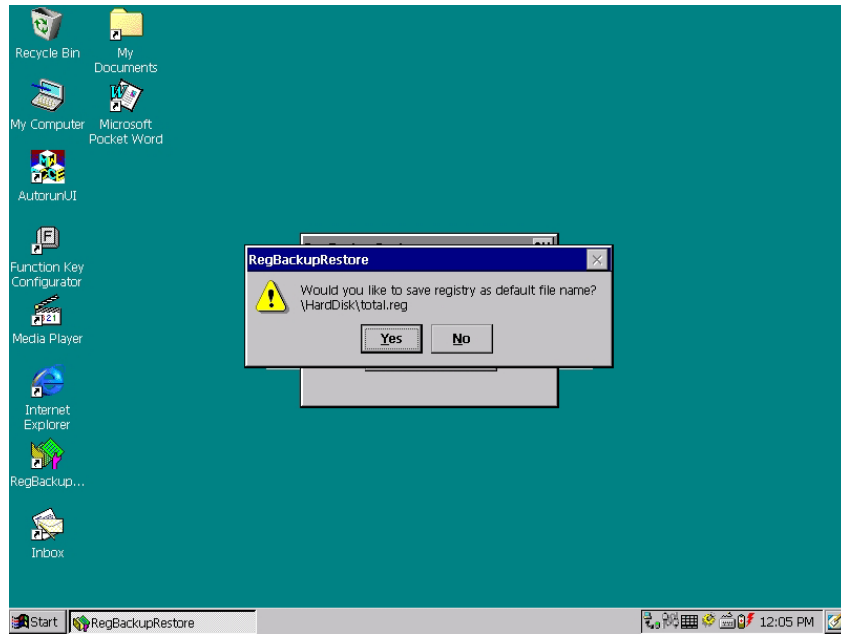
1. Double click “RegBackupRestore” Icon on the desktop.



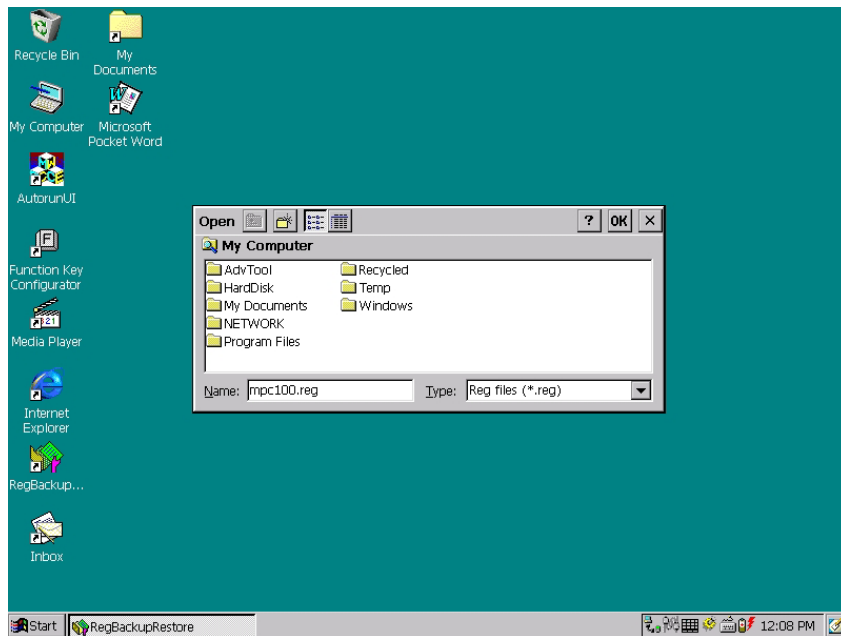
2. Press “Backup Registry” button.



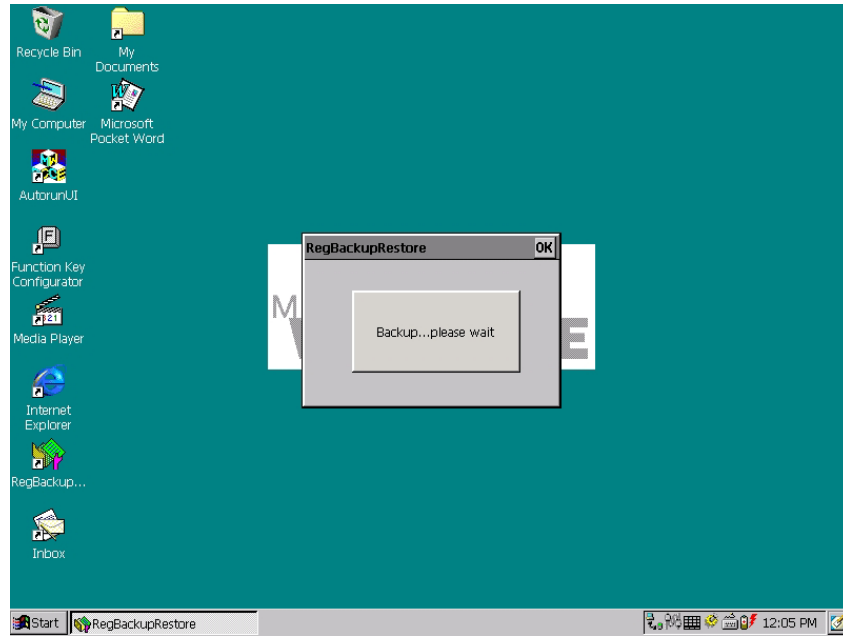
3. If you want to use the default registry file name, press “Yes”.



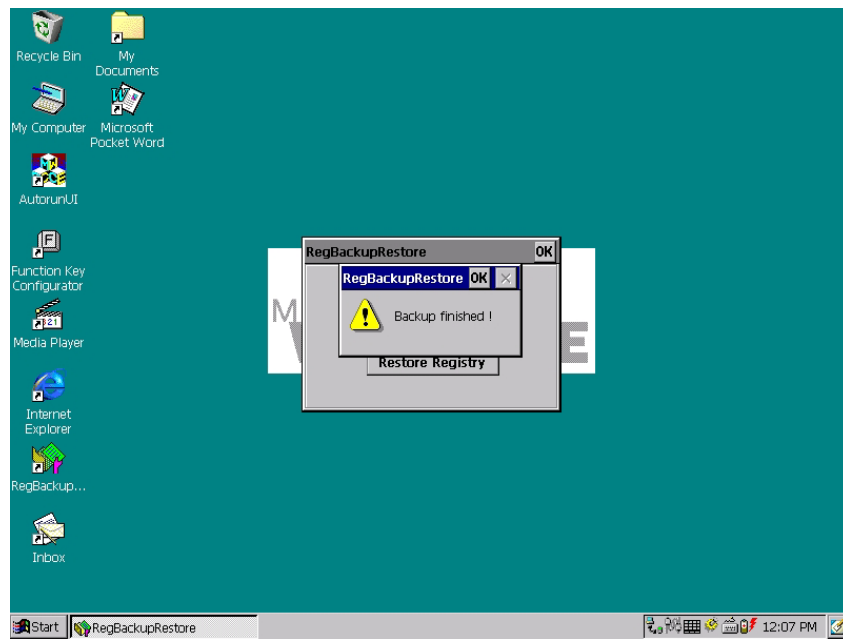
Or press “No”, and specify the registry file name which you want.



Then the MPC100 starts to backup the system registry into a file.

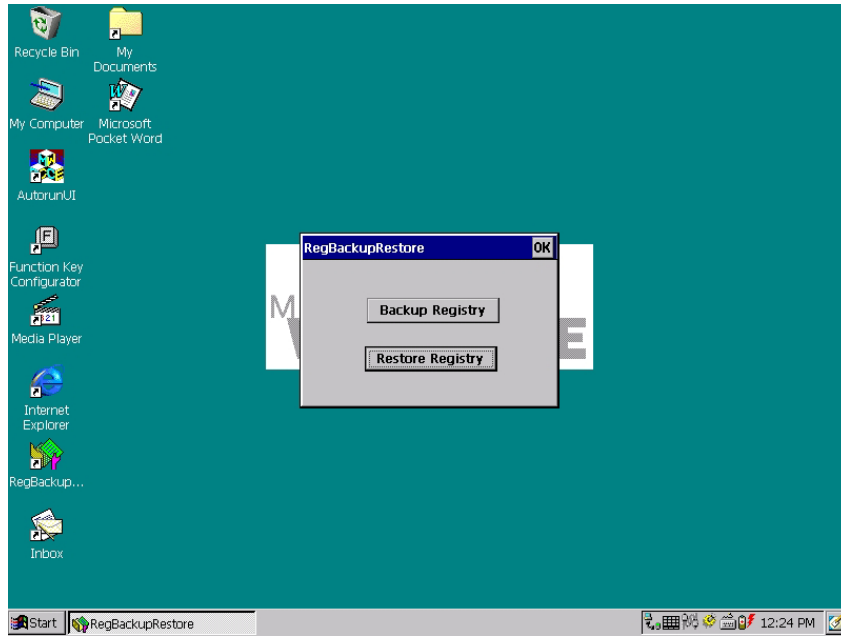


At the end of the process, the “Backup finished” will appear.

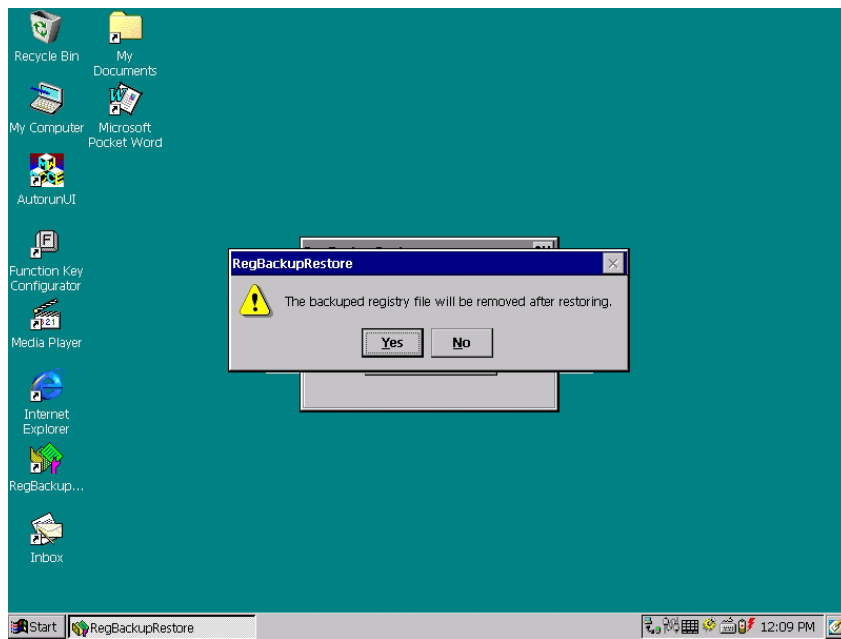


(2) Steps to Restore registry:

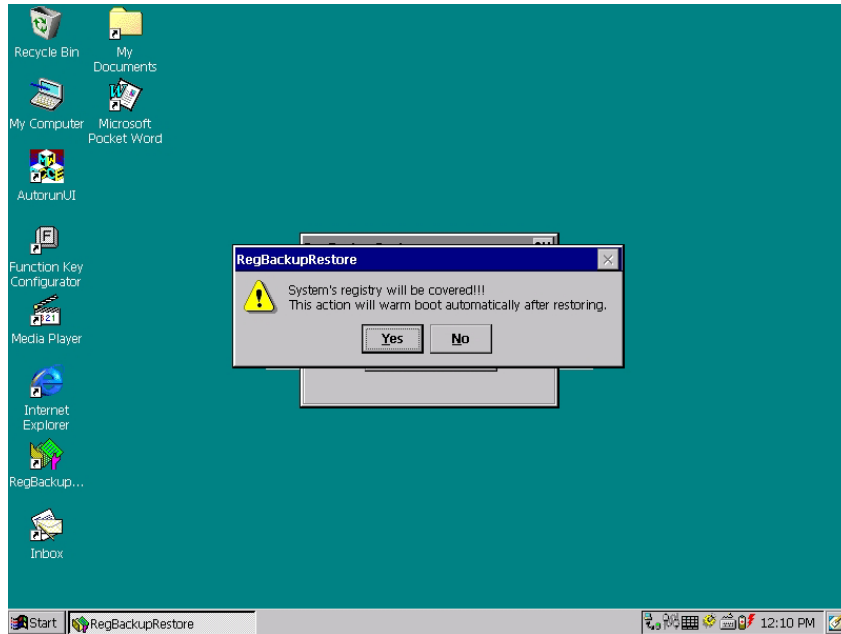
1.Press the “Restore Registry” button.



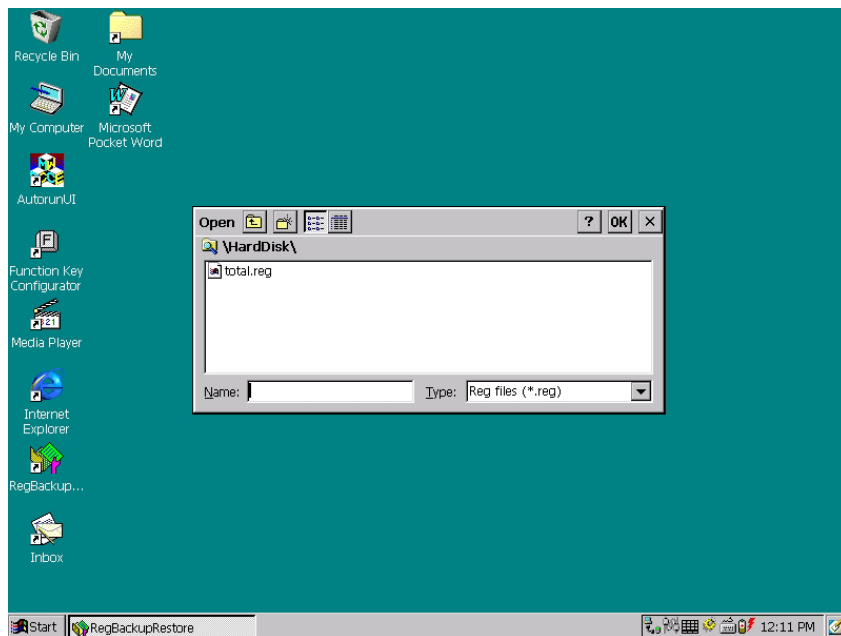
The registry file is removed after restoring the system registry.



After the registry backup is finished, the system will automatically reboot.



Specify the registry file you want to restore to the system.



After restoring, the system will reboot, and the registry will take effect.

3. Connecting Other Devices

Your MobiPanel is designed to support a number of external devices. As stated earlier, the devices need to be compatible with the Windows CE 3.0 operating system. A list of drivers included within Windows CE 3.0 can be viewed on the Windows CE web site: <http://www.microsoft.com/windows/embedded/ce/tools/hardware/drivers.asp>

If drivers are not included for the device being connected, the device manufacturer needs to provide their own Windows CE 3.0 driver.

3.1 USB Keyboard and Mouse

Your MobiPanel can support a USB keyboard and mouse. Below is a list of some keyboards and Mice that work with the MobiPanel:

Keyboard			
Manufacturer	Part Number	Interface	Name
Acer	6511-HA	USB	Aspire Keyboard
BTC	BTC-5122U	USB	BTC Keyboard
Chicony	KU-9985	USB	Chicony Keyboard
Chicony	ACK-600HM	USB	Chicony Keyboard
Microsoft		USB	Microsoft Natural Keyboard
Mouse			
Genius	Niche	USB	Genius Mouse
Logitech	M-CA848A	USB	Logitech Wheel Mouse
Logitech		USB	Logitech Wheel Mouse, Optical
Logitech	M-UB48	USB	Logitech Mouse
Microsoft		USB	Wheel Mouse, Optical
Microsoft		USB	Microsoft IntelliMouse

For information on using other USB devices, contact the peripheral vendor.

3.2 External Microphone

You can use an external microphone to improve the quality of your voice recording or transmissions.

3.3 External Speakers

The experience of visiting websites, playing games or MP3 can be enriched through using external speakers.

3.4 External Display (Optional)

For presentations or lectures, you can connect a CRT (Cathode Ray Tube Monitor) or projector via the supplied Mini-VGA cable and Port.



4. Getting Online

4.1 Establishing a Dial-up Connection

Using an ISP (Internet Service Provider), users will be provided with information needed to quickly connect to the Internet.

Place either a Fax/Modem PCMCIA or CompactFlash card in the appropriate slot and connect the cable to the phone connection. Go to

Start→Programs→Communication→Remote Networking→Make a New Connection, and fill in the information as supplied by your ISP.

4.2 Connecting to Your Network

In the office, you can connect to your network to go online. When you place your LAN card in the appropriate slot, a dialogue box appears, asking for IP information. Your network system administrator will need to supply this information and you will need to carefully follow their directions.

To check what network drivers are installed on your MobiPanel, go to **Start→Settings→Control Panel→Network**. At this point, you can also edit IP information if necessary, by highlighting the relevant network driver and then clicking on the properties.

4.3 Ending a Connection

To end a connection, go to the icon in the lower left of your taskbar, double click and choose '**Disconnect**'.

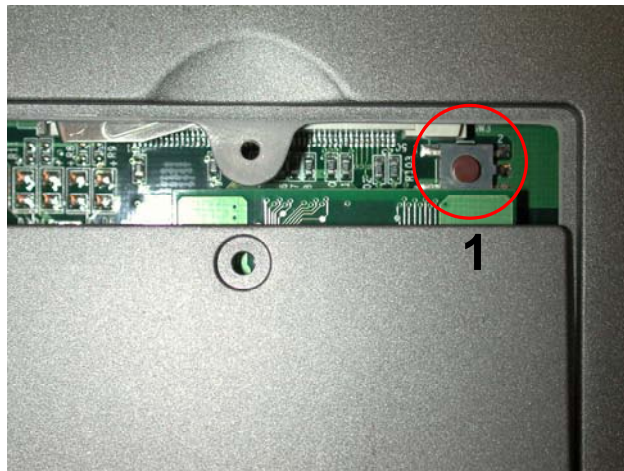
5. Troubleshooting

For problems with your MobiPanel, go to **Start→Help**. This brings up a general user guide to reference. Most questions will be able to be answered from this resource.

5.1 Common Problems / Frequently Asked Questions

The MobiPanel will not turn on!

- Make sure the ON/OFF switch is set to 'ON'
- Press one of the buttons on the front (either button A group, or B denoted in [Section 1.7](#))
- If device does not power on, use the AC Adapter to plug the Tablet into the wall.
- If this does not turn the Tablet on, push the software reset button located next to the CompactFlash Slot
- A last resort will be, you will need to use the hardware reset button, marked on the diagram below. Use a small Philips head screw driver and remove the screws. Lift the cover and press the reset button. This will wipe all memory from your MobiPanel.



I touch the screen with my stylus, and the mouse arrow is in an entirely different place!

- This is a sure sign that you need to re-calibrate your touchscreen.
- Use the arrow keys and navigate the mouse arrow.
- Go to **Start→Settings→Control Panel→Stylus**
- Click the calibration tab.
- Click recalibrate and follow the instructions.

How do I turn off my MobiPanel?

- You can turn off your MobiPanel by simply going to the Start Menu and choosing '**Suspend**'. This will put the device into standby mode. As long as the battery is still charged, no data will be lost.

How do I restart my MobiPanel? (If it freezes / hangs up, or I just loaded new software)

- If you need to restart your MobiPanel, unscrew your stylus and hit the software-reset button on the side of the Tablet. If your MobiPanel is not responding to any commands (that is, it is frozen) you can use this same reset button. The software-reset button will not affect data in your MobiPanel system.
- If your system freezes or hangs, and does not respond, even after you hit the software reset button, first remove the battery then restart the system. If this does not remedy the situation, you will need to use the hardware reset button, marked on the diagram below. Use a small Philips head screw driver and remove the screws on the cover shown. Lift the cover and press the reset button. This will wipe all memory on your MobiPanel.

My screen is dirty, how can I clean it without harming the screen?

- Clean the screen with a soft, clean cloth and commercial window cleaner that does not contain wax or abrasives. Always apply the cleaner to the cloth, not the screen. If the display contains grease or some other contaminant, use isopropyl alcohol instead of commercial cleaner. Note: paper toweling and other paper products are abrasive. Be sure to use a clean cloth when wiping the screen.

Can I protect my MobiPanel with password access?

- Yes, to protect your valuable information, you may want to set up a password for your MobiPanel. Go to **Start→Control Panel→Password**.

If the external Keyboard/Mouse can't work while connected

- Please switch ON/OFF button one time after the external keyboard/mouse is connected

5.2 Handwriting Recognition

Lower Case

a		k		u		l	
b		l		v		2	
c		m		w		3	
d		n		x		4	
e		o		y		5	
f		p		z		6	
g		q				7	
h		r				8	
i		s				9	
j		t				0	

Upper Case

A		K		U	
B		L		V	
C		M		W	
D		N		X	
E		O		Y	
F		P		Z	
G		Q			
H		R			
I		S			
J		T			

Symbol

!		+		?		}	
“		,		@		~	
#		-		[
\$.		\			
%		/]			
&		:		^			
'		;		_			
(<		,			
)		=		{			
*		>					

Appendix A: Windows CE 3.0 image pack content of list

	English Version	Japanese Version	Chinese Version
Ink Memo	Y	Y	Y
Calculator	Y	Y	Y
Voice Recorder	Y		
RegBackup Restore	Y	Y	Y
Citrix ICA Manager	Y	Y	Y
Handwriting Recognition	Y	Y	Y
Primer PDF Reader	Y		
IA Album	Y	Y	Y
Advantech Function Key App	Y	Y	Y
Advantech Numerical Key Pad	Y	Y	Y
Advantech AutoRun Manager	Y	Y	Y
Microsoft RDP	Y	Y	Y
Java	Y	Y	Y
Java Script	Y	Y	Y
DIRECTX	Y	Y	Y
VB Run-Time	Y	Y	Y
VB Script	Y	Y	Y
Media Player	Y	Y	Y
Inbox	Y	Y	Y
Pocket Word	Y	Y	Y
IPSM	Y	Y	Y
IE Sample	Y	Y	Y

Appendix B: Specifications

Processor	Intel StrongARM 1110 206 MHz and companion chip SA1111	
Operating System	Windows CE 3.0	
Memory	128 MB SDRAM on board 32 MB Flash ROM on board	
Display	10.4" TFT 250 nits High brightness LCD; 10.4" TFT Transflective LCD, Sunlight Readable (Optional) 800 x 600 SVGA Display mode for portrait/landscape	
Audio System	AC-Link Audio 2 x internal speakers	
External Keyboard	USB or PS/2, IR Keyboard interface support	
Application Button	5 x customer-defined hot keys for application selection 1 x Power lock switch (Suspend switch) 1 x Software reset switch	
Pointing Device	Built-in resistive touch panel 4 direction keys with one enter key	
Battery	Primary battery pack (4-cell) with smart Li-ion battery, Typical use(Suspend/Full-run mixed) more than 8 hours	
Power Adapter	Universal AC 90V ~ 265 V, 47 ~ 63 Hz input, 19 V.5 DC, 60 W	
LED Status Indicator	Power LED, power on: green; power off: dark Charging LED, charging: orange, blinking when battery low. Docking LED, docking: green	
I/O Port	1 x PCMCIA Type II slot 1 x Compact flash Type II card socket support 1 x RS-232/422/485 (select by jumper setup) 1 x IrDA interface 1 x mini-VGA connector 1 x PS/2 connector	1 x USB Type A connector 1 x DC-in jack 1 x audio jack for external headphone 1 x audio jack for external Microphone 1 x cradle connector
Network Communication	802.11b Wireless LAN build-in option, 10/100T Base Ethernet through PCMCIA card	
Major Application	Web application; Thin Client application; Offline data management application	
Application Software	IE, RDP, Citrix ICA, Hand writing recognition, On screen K/B, PDF viewer, Picture viewer, JVM, Voice recorder (Optional depended)	
Physical	290(W)*213(D)*23.5(H) mm (Min-height) 1.3 Kg (with primary battery pack & 10.4" Panel)	
Environment	Operating Temperature : 5°C ~ 40°C Storage Temperature : -20°C ~ 60°C Operating Humidity : 20% ~ 80%	