

WLAN-3325 Configuration Note

Introduction

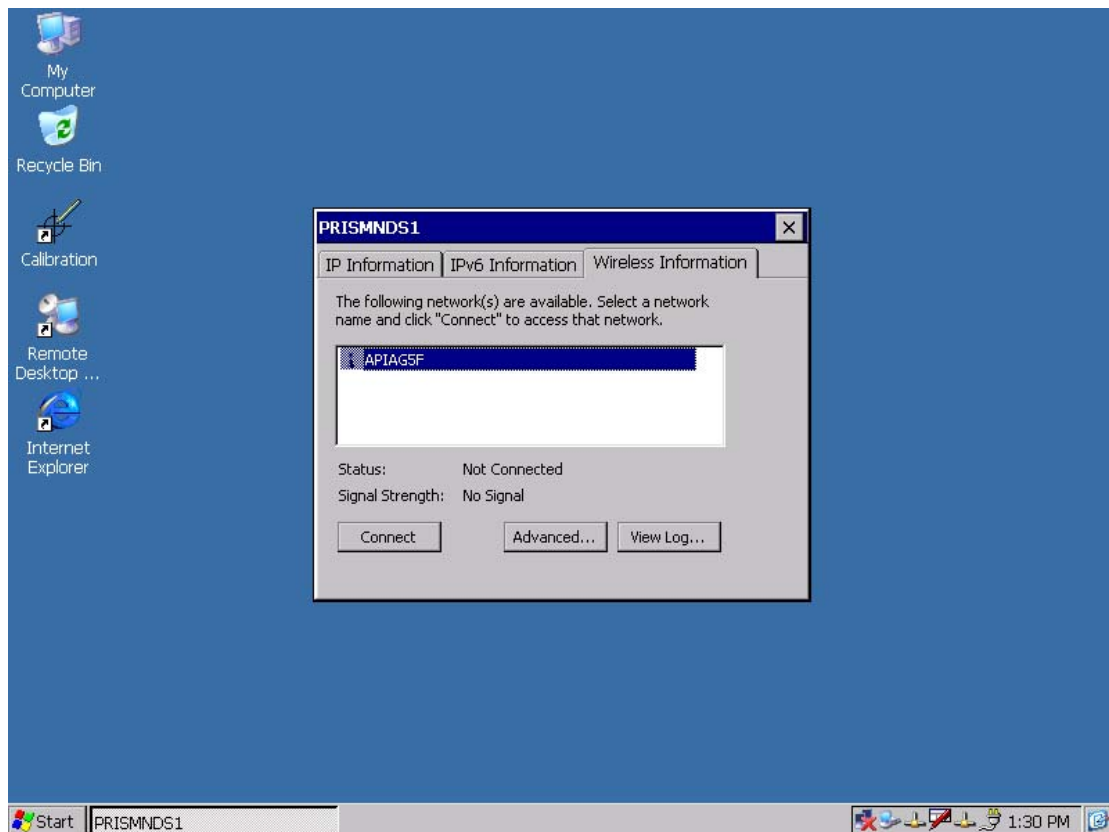
UNO 2053/2059 supports Advantech's wireless product: MLAN-3325. It allows you to scale your network creatively, without being confined to cable reach. Wireless connections also provide the ultimate flexibility in reconfiguring your network without incurring additional cabling costs. This document introduces how to set MLAN-3325 configuration.

Preparation

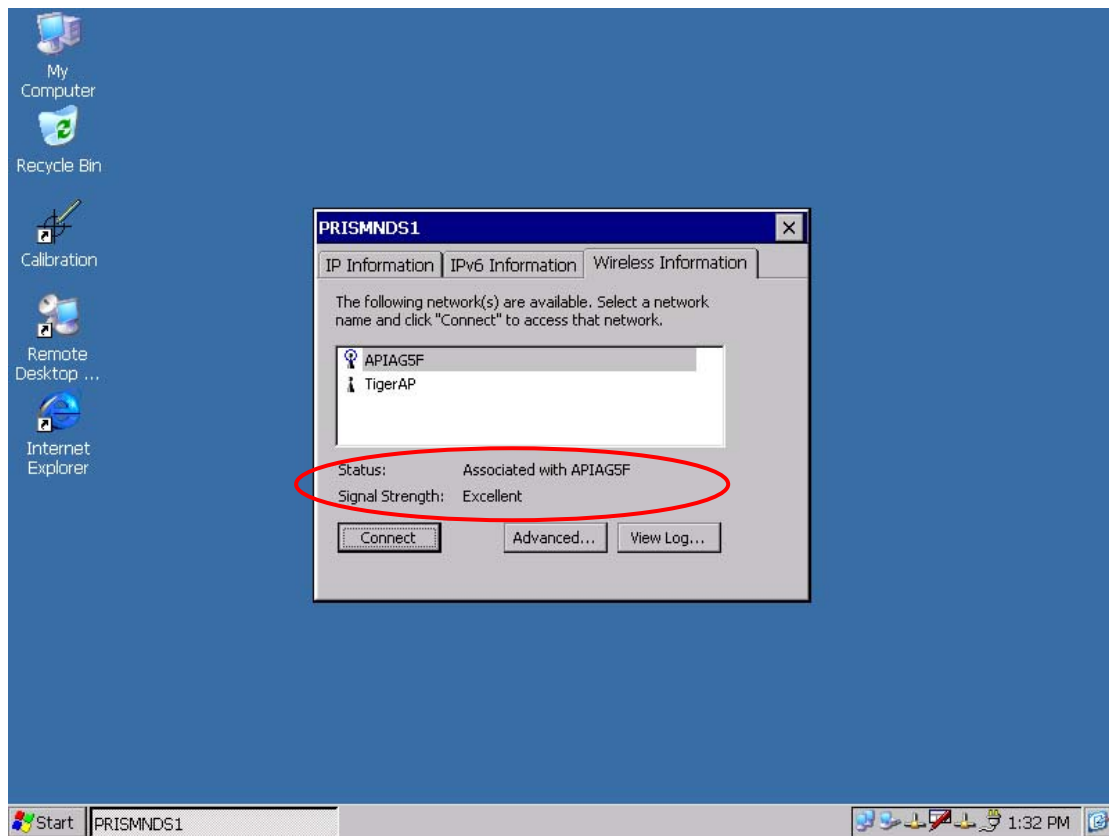
Before you begin to set MLAN-3325 configuration, you must set an AP (Access Point) in your environment. Then MLAN-3325 will detect the AP automatically and try to connect with it.

MLAN-3325 Configuration

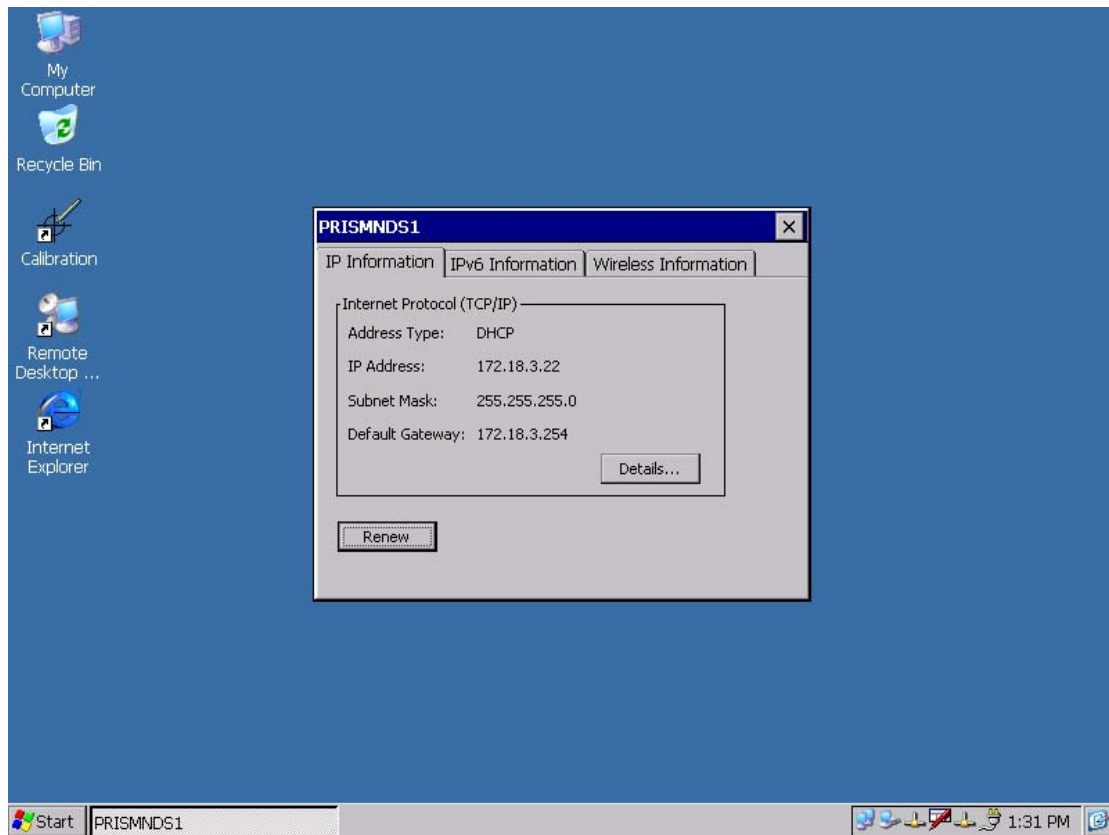
1. Insert MLAN-3325 in the PCMCIA slot of UNO and then it will pop-up below window.



2. Select **APIAG5F** (The AP in the environment that is detected by MLAN-3325) and press **Connect** button. Then UNO with MLAN-3325 will try to connect this AP. If it connects with AP successfully, Status will display **Associated with APIAG5F**.



3. Click IP Information tab under the window and press **Renew** button. Then it will display its IP that is allocated via AP.



MLAN-3325 configuration procedure is completed and UNO can access network normally.

4. To ensure your wireless connection smoothly, you can select Automatically connect mode for your device.

Click Wireless Networks tab under the window and press **Advanced** button. Select “**Any available network (access point preferred)**” and select “ **Automatically connect to non-preferred networks**”.

