

IPPC-7158B

15" XGA TFT LCD Industrial Panel PC with 14 x ISA/PCI/PICMG Slots, Passive Backplane and Membrane Keypad

NEW



Features

- 15" XGA TFT LCD with touch screen (optional) provides vivid, sharp images
- Offers 14 expansion slots for PCI, PICMG and ISA.
- Detachable side-open front panel makes maintenance fast & easy
- Programmable membrane function keys for varied application access
- Heavy-duty design with anti-rust chassis with aluminum front panel which meet NEMA4/IP65
- One Front access USB 2.0 port

Introduction

The IPPC-7158 is a brand new Industrial Panel PC with 15" XGA TFT LCD. It supports passive backplane boards with ISA/PCI/PICMG expansion slots. IPPC-7158 provides many powerful features such as a detachable side-open front panel, a front-accessible USB 2.0 port, programmable membrane function keys & touch pad, OSD Control, NEMA4/IP65 compliant aluminum front panel, and optional analog resistive touchscreen (USB Interface).

Specifications

General

- **Button Control** Membrane Keypad 1 43 operating keys
Membrane Keypad 2 10 programmable macro function keys
- **BIOS** Award™ 8 Mbit FWH
- **Certifications** BSMI, CCC, CE, FCC
- **Cooling System** 1 x 49 CFM fan w/50,000 hrs MTBF
- **Dimensions (W x H x D)** 482 x 354.8 x 162 mm (18.97" x 13.96" x 6.37")
- **Disk Drive Bay** Supports one FDD, two 3.5" HDD & one CD-ROM (HDD optional)
- **Enclosure** Front Panel – Aluminum,
Chassis – anti-rust
- **Mounting** 19" Rack
- **Power Input** 100-240 Vac, 10 A, 60-50 Hz
- **Power Output** +5 V @ 30 A, +12 V @ 15 A, +3.3 V @ 28 A,
-5 V @ 0.3 A, -12 V @ 0.8 A, +5 VSB @ 2 A
- **Power Supply** Watt: 300 W, MTBF: 100,000 hrs
- **Weight (Gross)** 18 kg (39.7 lb)

System Hardware

- **Backplane Segments** 1
- **Slots** 2 ISA, 10 PCI, 2 PICMG
- **Size** 315 x 260 mm (12.4" x 10.24")
- **PCI Bridge** Pericom PI7C8150MA
- **PCI Slot** Primary: 3 slots,
Secondary: 7 slots

LCD Display

- **Backlight Life** 50,000 hrs
- **Contrast Ratio** 450 : 1
- **Display Size** 15"
- **Display Type** XGA TFT LCD
- **Luminance** 250 cd/m²
- **Max. Colors** 16.2 M (RGB 6-bit + FRC data)
- **Max. Resolution** 1024 x 768
- **OSD Control** ON/OFF, Brightness down, up (behind the front panel)
- **Viewing Angle (H/V°)** 140/120

Touchscreen (Optional)

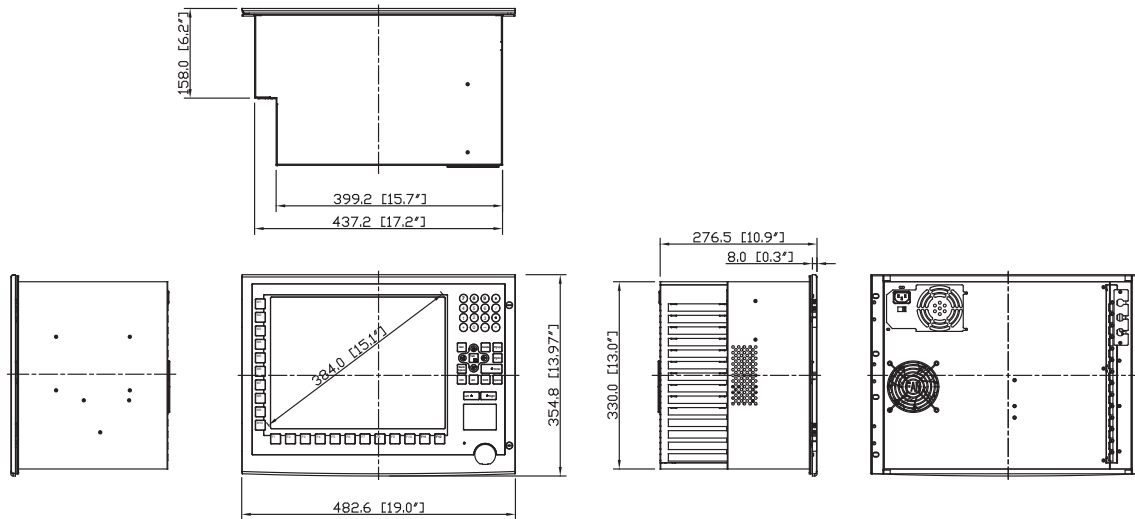
- **Interface** USB
- **Lifespan** 10 million with a silicone rubber of R8 finger, writing rate is by 250g at 2 times/s
- **Light Transmission** > 80% (AMT)
- **OS Support** Windows Vista/2000/XP, Windows CE, Linux
- **Type** 8-wire Resistive

Environment

- **Humidity** 5 – 85% RH @ 40° C (non-condensing)
- **Ingress Protection** Front panel NEMA4/IP65
- **Operating Temperature** 0 – 50° C (32 – 122° F)
- **Storage Temperature** -20 – 60° C (-4 – 140° F)
- **Vibration Protection** 5 – 500 Hz, 1 G_{RMS} random vibration (operating)

Dimensions

Unit: mm



CUTOUT Dimensions 439.20(17.29")x332.00(13.07")

Ordering Information

- **IPPC-7158B-X1AE** 15" XGA TFT LCD Passive Backplane Industrial Panel PC with 14 x ISA/PCI/PICMG Slots and Membrane Keypad
- **IPPC-7158B-R1AE** 15" XGA TFT LCD Passive Backplane Industrial Panel PC with 14 x ISA/PCI/PICMG Slots and Membrane Keypad and resistive touchscreen

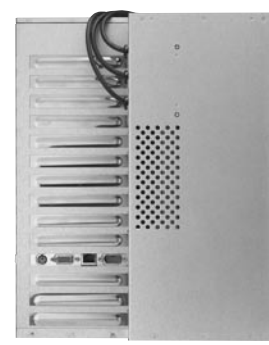
Accessories

- **1702002600** Power Cable US Plug 1.8 M
- **1702002605** Power Cable EU Plug 1.8 M
- **1702031801** Power Cable UK Plug 1.8 M
- **1702031836** Power Cable China/Australia Plug 1.8 M

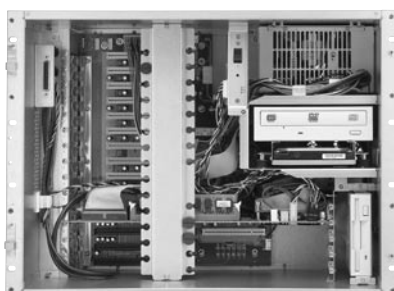
CPU Card Suggestions

Part No	CPU Grade	Description
PCA-6186VE-00B2E	Intel Pentium 4 (400/533 MHz FSB)	Socket 478 Pentium 4/Celeron processor card with VGA/LAN/HISA
PCA-6186LV-00B2E	Intel Pentium 4 (400/533 MHz FSB)	Socket 478 Pentium 4/Celeron processor card with VGA/HISA
PCA-6003VE-00A2E	Intel Pentium III (133 MHz FSB)	Socket 370 Pentium/Celeron processor card with VGA/LAN

Side View



Open View



Rear View

