

FWA-3660

1U Rackmount Intel® Pentium® III Processor-based Platform with 4 PCI LAN Ports/LCD Display



CE FCC

Features

- 1U rackmount Internet security platform for ROBO, SOHO and SMB
- Four 10/100 Fast Ethernet ports
- Console port for local setting
- Hard drive mounting bracket for 3.5" drive
- LCD display module

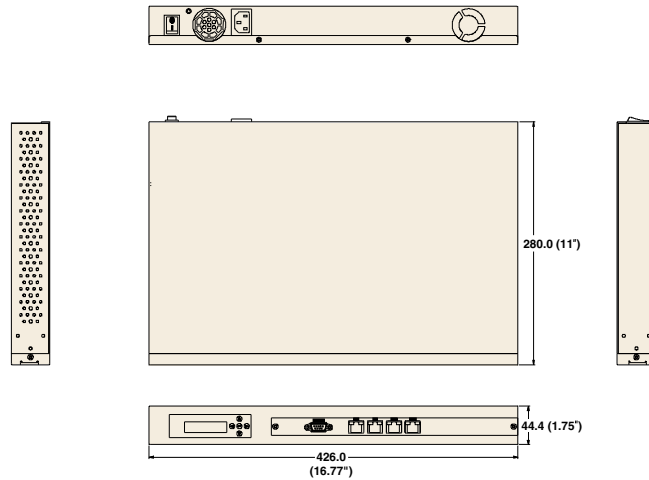
Introduction

Conceived as a powerful rackmount Internet security platform, the FWA-3660 is specifically designed for Internet secure connectivity. It is suitable for SOHO (Small Office, Home Office), SMB (Small Medium Business), and ROBO (Remote Office, Branch Office) segments. Designed with the Intel® Pentium® III and Celeron® processor, it provides good performance and meets the requirements of Internet security appliances. The system supports CompactFlash for use in installing OS and Internet security applications. This prevents service disruption caused by hard disk mechanical/magnetic failures. In addition, the FWA-3660 can support a system memory up to 512 MB SDRAM. Both CompactFlash and SDRAM can be accessed and replaced for software upgrades through an easily removable cover. Designed with the Plug-and-Serve concept in mind, the FWA-3660 offers four 10/100 Mbps auto-sensing Fast Ethernet ports in the front panel. There are eight LED indicators on the front panel display which monitor LAN activities and LAN links. For easy access, the front panel has a 9-pin, RS-232 serial port for local system management, maintenance and diagnostics. The FWA-3660 has a place reserved for an optional 3.5" IDE HDD. It is FCC and CE compliant.

Specifications

| | | | |
|--------------------------|------------------------|--|---------------------------|
| Processor System | CPU | Intel Pentium III | Intel Celeron |
| | Max. Speed | 1.26 GHz | 566 MHz |
| | L2 Cache | 512/256 KB | 256/128 KB |
| | Chipset | Intel 815E | |
| | Front Side Bus | 66/100/133 MHz | |
| | BIOS | Award™ 4 Mbit Flash | |
| Memory | Technology | PC-133 SDRAM | |
| | Max. Capacity | 512 MB | |
| | Socket | 144-pin SODIMM | |
| Ethernet | Interface | 10/100Base-TX | |
| | Controller | Intel 82559ER x 3, Intel 82562ET x 1 | |
| | Connector | RJ-45 x 4 | |
| Drive Bay | 3.5" HDD | 1 (optional) | |
| Cooling | Fan | 1 (15 CFM) | |
| | Blower | 1 | |
| Management | Console | RS-232 x 1 | |
| Miscellaneous | Control | Power switch | |
| | CompactFlash Socket | 1 on IDE 1 (Secondary/Master) | |
| | LCD Display Module | 1 | |
| Power Requirement | Input | ATX PS, AC 90 ~ 264 V @ 47 ~ 63 Hz, full range | |
| | Output | 180 W | |
| Environment | Operating | | Non-Operating |
| | Temperature | 0 ~ 40° C (32 ~ 104° F) | -20 ~ 75° C (-4 ~ 167° F) |
| | Humidity | 5 ~ 85 % @ 40° C (104° F) | 5 ~ 95 % |
| Physical Characteristics | Dimensions (W x H x D) | 426 x 44 x 280 mm (16.7" x 1.7" x 11") | |
| | Weight | 4.5 kg (9.9 lb) | |

Dimensions



Unit: mm (inch)

Ordering Information

| Part Number | Processor | LAN | Power Supply | CompactFlash | SDRAM | HDD |
|-------------|-----------|-----|--------------|--------------|-------|-----|
| FWA-3660 | - | 4 | 180 W | - | - | - |

Accessories

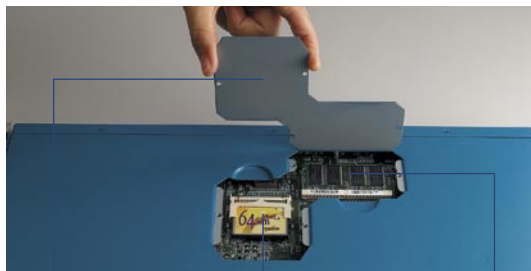
| Part Number | Description |
|-------------|--|
| 1703080101 | Power cable wire 7P/Big 4P*2 10 cm |
| 1703100260 | USB cable |
| 1700260250 | Parallel cable: ASS'Y LPT port 25 cm 25P to 26P 2.0 mm |
| 1700100250 | Secondary cable: ASS'Y COM port 25 cm D-SUB 9P to 10P 2.0 mm |
| 1703080160 | PS/2 Y cable mini-DIN 16 cm |
| 1701160101 | VGA cable: ASS'Y VGA 10 cm D-SUB 15P to 16P 2.0 mm |
| 1701440350 | Flat cable 44P 35 cm Gray IDC44P/IDC44P/IDC44P |
| 1701440500 | Flat cable 40P 50 cm Gray IDC40P/IDC40P/HOUSING44P |
| 1700081401 | Cable Ethernet cross over 8P to 8P 140 cm |

Packing List

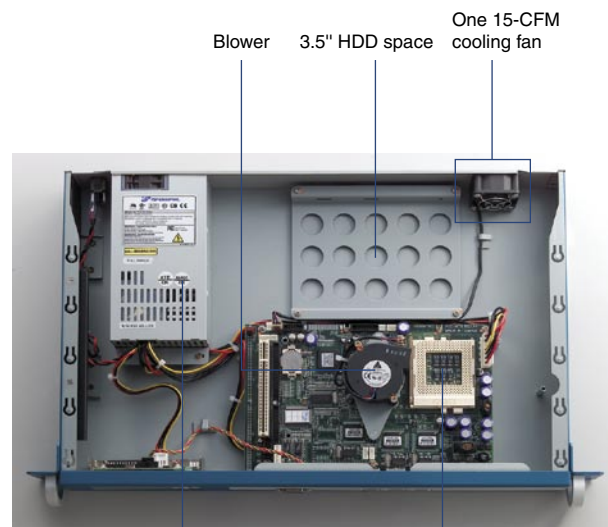
| Part Number | Description |
|-------------|--------------------|
| 170144030A | IDE flat cable 40P |
| 1701100306 | Console cable |
| 1961600000 | CPU cooler |



LCD display module RS-232 console port Four LAN ports



Removable cover allows easy maintenance and software upgrades CompactFlash socket SDRAM socket



Blower 3.5" HDD space One 15-CFM cooling fan Power supply FC-PGA370 CPU socket