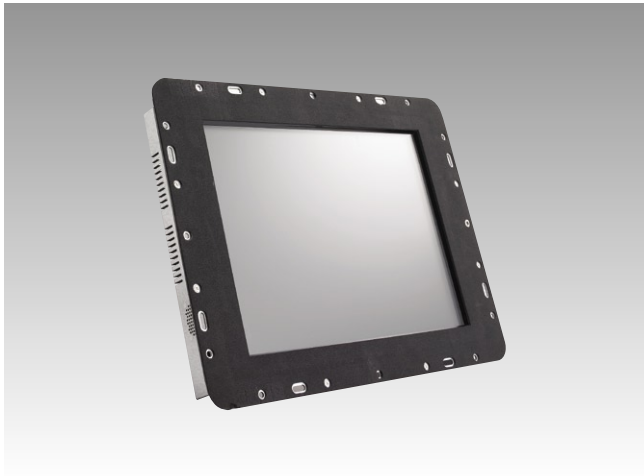


ES-3112

12.1" Industrial LCD Monitor



Features

- 12.1" LCD supports 800 x 600 or 1024 x 768 pixels and wide operating temperature (-20 ~ 70° C)
- Multiple touchscreen options for different applications
- Versatile mounting brackets
- Open-frame architecture with Embedded LCD touch panel
- Supports full-function OSD control keys to optimize the display
- Sunlight readable option
- Ultra-high brightness up to 1000 nit option

Introduction

The Advantech ES-3112 Industrial Open Frame 12.1" Monitor is equipped with a Resistive, Capacitive, SAW or Infrared touchscreen, mainly for self-service kiosk applications. The strengthened steel mechanical enclosure and optional tempered or vandal proof glass enables the ES-3112 to withstand harsh environments.

Specifications

- **I/O Ports** 15-pin D-Sub, DC power input, RS-232 port, Power switch
- **Display Input Signal** Analog RGB, 0.7 VP-P/75 Ohm
- **Multi-Scan Mode** Supports VGA/SVGA
- **Refresh Rates** FH: 30 ~ 60 KHz, FV: 56 ~ 75 Hz
- **OSD Control** Keys: Provide auto-tune/menu/decrease/increase
Function: Supports Brightness/Contrast/Clock/Phase/Horizontal Position/Vertical Position/Sharpness
- **Power** External 45 W power adaptor, with AC 100 ~ 240 V @ 1.2 A input and DC +12 V @ 3.75 A output
- **Dimensions (W x H x D)** 390 x 297 x 49 mm
- **Weight** 3.4 kg

Environment

- **Operating Temperature** -10 ~ 65° C (14 ~ 149° F)
- **Storage Temperature** -30 ~ 70° C (-22 ~ 158° F) for standard LCDs
- **Humidity** 5 ~ 95% @ 40° C, non-condensing
- **Shock** 10 G peak acceleration (11 ms duration)
- **EMC Approved** CE, FCC
- **Safety Approved** UL

Display

NEW

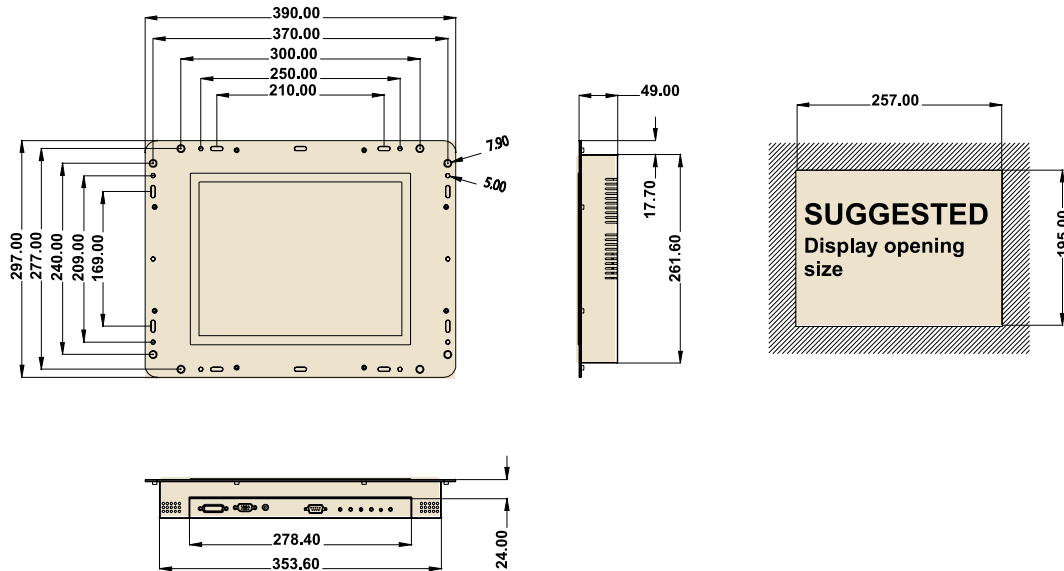
Feature	Standard	Sunlight Readable
Size	12.1"	12.1"
Resolution (pixels)	800 x 600 SVGA/ 1024 x 768 XGA	800 x 600 SVGA
Number of Colors	262K	262K
Viewing Angle (L/R/U/D)	70°/70°/50°/60° ; 65°/65°/75°/45°	70°/70°/50°/60°
Brightness (nit)	400 / 320	400
Contrast Ratio	500:1 / 550:1	500:1
Response Time (ms)	35 / 6	35
Lamp Life (hrs)	50,000	50,000
Long-term Support	Yes	Yes
Anti-reflection	N/A	Yes

Touchscreen

Type	Analog Resistive	Capacitive	SAW	Infrared
Thickness	2.67 mm	3.18 mm	2.6 mm	3.0 mm
Resolution	4096 x 4096	1024 x 1024	4096 x 4096	4096 x 4096
Light Transmission	80%	85%	92%	92%
Controller Interface	RS-232/USB	RS-232	RS-232/USB	RS-232/USB
Power Consumption	+5 V @ 200 mA	+5 V @ 100 mA	+5 V @ 75 mA	+5 V @ 150 mA
Touch Lifetime	35 million hrs	225 million hrs	50 million hrs	MTBF 100,000 hrs
Driver OS Support	DOS, Linux, Mac, Windows 95/98/NT/ME/CE/2000/XP			

Dimensions

Unit: mm



Ordering Information

Part No.	Type	Brightness (nit)	Interface	Touchscreen	Touch Interface	Transflective
ES-3112G-VSAE	Open Frame	400	VGA	Tempered Glass	N/A	N/A
ES-3112R-VSAE	Open Frame	400	VGA	5 wire Resistive	RS232/USB	N/A
ES-3112C-VSAE	Open Frame	400	VGA	Capacitive	RS232	N/A
ES-3112S-VSAE	Open Frame	400	VGA	SAW	RS232/USB	N/A
ES-3112V-VSAE	Open Frame	400	VGA	Infrared	RS232/USB	N/A
ES-3112R-VXME	Open Frame	350	VGA	5 wire Resistive	RS232/USB	N/A
ES-3112V-VSA-SRE	Open Frame	400	VGA	Infrared	RS232/USB	Yes

Notes

- (1) Capacitive, SAW and Infrared touch panels are recommended for use with sunlight readable outdoor solutions.
- (2) The above list shows major part numbers for your reference. Please refer to the Advantech Display Solutions Selection Wizard (<http://www.advantech.com.tw/ePlatform/DS/dsw.aspx>) or CTOS to find part numbers and order your desired combination of LCD, touchscreen and signal interface.
- (3) Please use Display Solutions DTOS for special requirements.