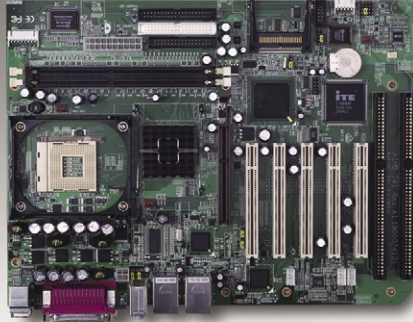


# AIMB-741

## Socket 478 Pentium® 4/Celeron® Processor-based Industrial ATX Motherboard with AGP/Dual LAN (400/533 MHz FSB)



CE FCC

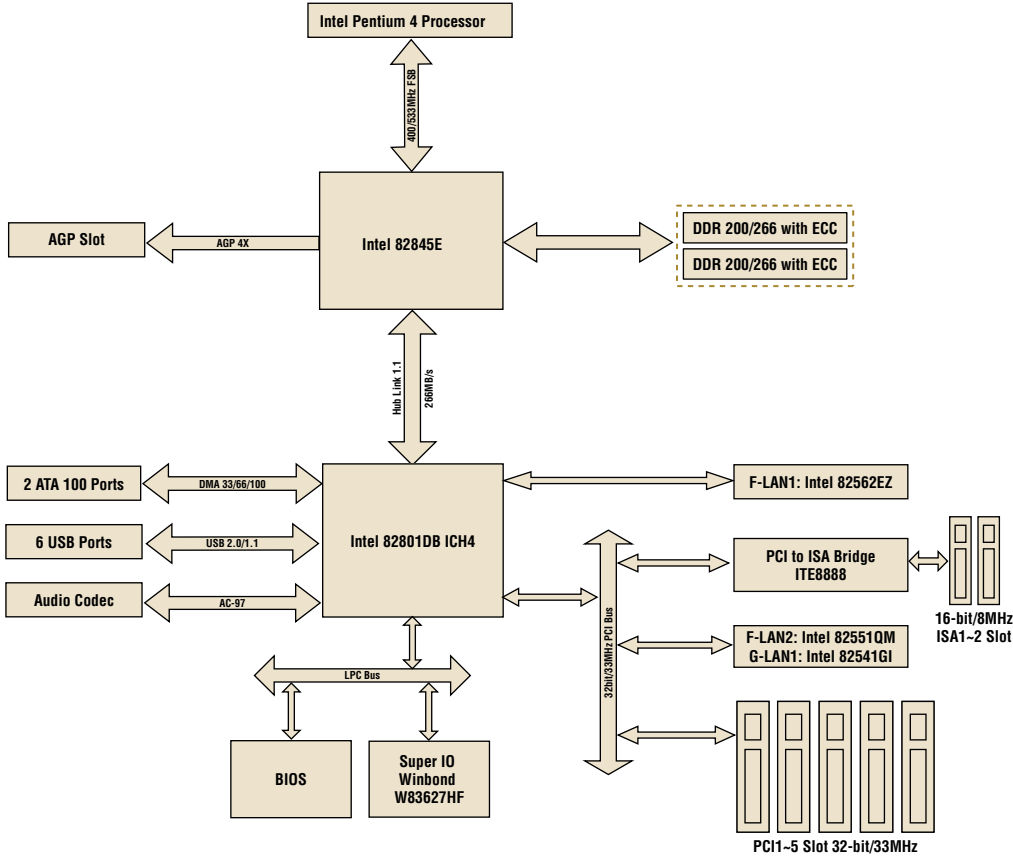
### Features

- Industrial grade motherboard with long life support
- Intel® 845E chipset 400/533 MHz FSB
- Socket 478 Pentium® 4/Celeron® up to 3.06/2.8/2.8 GHz
- Onboard AGP 4X slot
- Supports 10/100Base-T Ethernet or 10/100/1000Base-T Ethernet
- 6 USB 2.0 ports
- 1 AGP slot / 2 ISA slots / 5 PCI slots (1 shared with ISA slot)
- CMOS automatic backup and restore to prevent accidental data loss setup
- Compatible with Advantech's 1U, 2U, 4U, 5U and 7U chassis

### Specifications

Processor System	CPU	Intel Pentium 4	Intel Celeron
	Max. Speed	3.06 GHz (533 FSB)	2.8 GHz
	L2 Cache	256/512 KB	128 KB
	Chipset	Intel 845E + ICH4	
	BIOS	Award 4 Mb FWH	
Bus	Front Side Bus	400/533 MHz	
	AGP	AGP 2.0 with 2X, and 4X, 1.5V only, 1 slot	
	PCI	32-bit/33 MHz, 5 slots (1 shared with ISA slot)	
	ISA	16-bit/8 MHz, 2 slots	
Memory	Technology	DDR 200/266 SDRAM with ECC support	
	Max. Capacity	2 GB	
	Socket	184-pin DIMM x 2	
Ethernet	Interface	10/100Base-T or 10/100/1000Base-T	
	Controller	F-LAN1: Intel 82562EZ (FE) F-LAN2: Intel 82551QM (FE) G-LAN1: Intel 82541GI (Gigabit)	
	Connector	RJ-45 x 2	
EIDE	Mode	ATA 100/66/33	
	Channel	2 (Max. 4 devices)	
I/O Interface	USB	6 (USB 2.0, 480Mbps; 2 external ports and 4 onboard pin headers)	
	Audio	2 (LINE-Out and MIC-In)	
	Serial	2 (RS-232)	
	Parallel	1 (SPP/EPP/ECP)	
	FDD	1	
	PS/2	2 (Keyboard and Mouse)	
Watchdog Timer	Output	Interrupt, system reset	
	Interval	Programmable 1~255 sec.	
Miscellaneous	Solid State Disk	1 Type I/II CompactFlash socket (Optional, upon request)	
	Typical	Pentium 4 3.06 GHz, 2 GB DDR 200/266 SDRAM	
Power Requirement		+3.3 V	+5 V
		5.95 A	0.86 A
			+12 V
Environment			Non-Operating
	Temperature	0 ~ 60 °C (32 ~ 140 °F), depends on CPU's speed	-20 ~ 70 °C (-4 ~ 158 °F)
Physical Characteristics	Dimensions	304.8 x 228.6 mm (12" x 9")	

Block Diagram



- Industrial Motherboards **1**
- Industrial Motherboard Chassis **2**
- PICMG Single Board Computers **3**
- Industrial Computer Chassis **4**
- Industrial Computer Peripherals **5**
- 6U CompactPCI Enclosures **6**
- 6U CompactPCI Boards **7**
- 6U CompactPCI I/O **8**
- 6U CompactPCI Accessories **9**
- 3U CompactPCI Systems **10**
- Internet Security Platforms **11**
- Network Application Ready Platforms **12**

Ordering Information

Part Number	Fast Ethernet LAN	Gigabit LAN
AIMB-741L-00A1	-	-
AIMB-741E-00A1	Single	-
AIMB-741E2-00A1	Dual	-
AIMB-741G-00A1	-	Single

Packing List

Part Number	Description	Quantity
1700340640	FDD cable	X 1
1701400452	IDE HDD cable	X 2
1701090401	COM port cable kit	X 1
170304015K	ATX 12V power converter cable	X 1
9689000068	Jumper pack	X 1
1962015680	I/O port bracket	X 1
-	Startup manual	X 1
-	Utility CD	X 1

Bracket View



AIMB-741E-00A1  
AIMB-741G-00A1



AIMB-741E2-00A1



AIMB-741L-00A1

Optional Accessories

Part Number	Description
1759214200	CPU cooler for Pentium 4 processor up to 2.8 GHz (70 W), for 1U chassis
1750000073	CPU cooler for Pentium 4 processor up to 3.2 GHz (89 W), for 2U or higher chassis