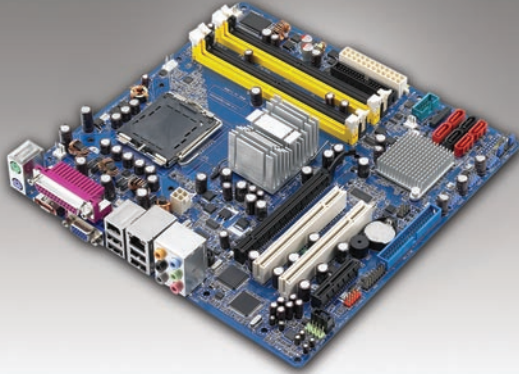


AIMB-564

LGA 775 Core™ 2 Quad/ Core™ 2 Duo/ Pentium® 4/ Celeron® D Processor-based MicroATX with DDR2/PCIe/LAN

NEW



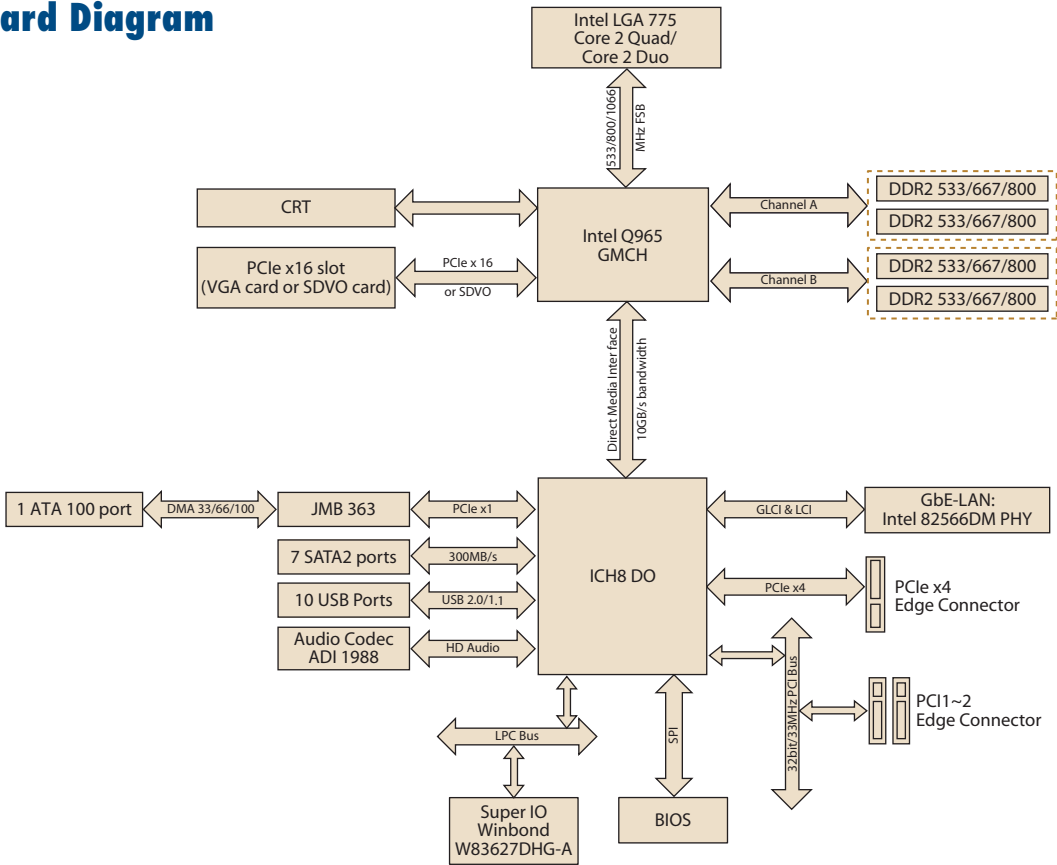
Features

- Intel® Q965 chipset 533/800/1066 MHz FSB
- Supports Intel® Core™ 2 Quad/ Core™ 2 Duo processor
- Dual channel DDR2 533/667/800 SDRAM up to 8 GB
- Chipset integrated VGA sharing 256 MB system memory
- PCIe x16 slot expansion
- Supports SATA RAID 0,1,5 and 10.
- Supports single 10/100/1000Base-T Ethernet via dedicated PCIe x1 bus
- TPM support via an optional daughter board

Specifications

Processor System	CPU (65nm/ 90nm)	Intel Core 2 Quad	Core™ 2 Duo	Pentium dual-core	Pentium® 4	Celeron® D
	Max. Speed	2.66 GHz	2.66 GHz	2.2 GHz	3.8 GHz	3.6 GHz
	L2 Cache	8 MB	4 MB	1 MB	2 MB/1 MB	512KB
	Chipset	Intel Q965 + ICH8 DO				
	BIOS	AMI® 16 Mbit SPI				
	Front Side Bus	533/800/1066 MHz				
Expansion Slot	PCIe x16	4.0 GB/s per direction, 1 slot				
	PCIe x4	1.0 GB/s per direction, 1 slot				
	PCI	32-bit/33MHz, 2 slots				
Memory	Technology	Dual channel DDR2 533/667/800 MHz				
	Max. Capacity	8 GB				
	Socket	240-pin DIMM x 4				
Graphics	Embedded	Intel GMA 3000 sharing 256 MB system memory				
	Add-on	PCIe x 16 slot				
Ethernet	Interface	10/100/1000 Base-T				
	Controller	GbE LAN: Intel 82566DM				
	Connector	RJ-45 x 1				
SATA II	Max. Data Transfer Rate	300 MB/s				
	Channel	7				
EIDE	Mode	ATA 100/66/33				
	Channel	1 (Max. 2 devices)				
I/O Interface	VGA	1				
	USB	Max. 10 (USB 2.0 compliant, 4 ports on rear panel)				
	Audio	8-CH HD Audio (Mic in, Line in, Line out, CD Audio in, 6 jacks)				
	Serial	1 (RS-232)				
	Parallel	1 (SPP/EPP/ECP)				
	FDD	1				
	PS/2	2				
	External SATA	1				
	IEEE 1394	2 (1 on rear panel, 1 on internal connector)				
Watchdog Timer	Output	System reset				
	Interval	Programmable 1~255 sec/ min				
Misc	TPM	Support TPM 1.2 (optional TPM daughter board)				
	Typical	Pentium 4 3.4 GHz, 1 GB SDRAM, 80 GB HDD				
Power Requirement	+12 V	+5 V		+3.3 V	5 Vsb	
	3.07A	10.37A		2.83A	0.46A	
Environment	Temperature	Operating			Non-Operating	
		0 ~ 55° C (32 ~ 131° F), depends on CPU's speed and cooler solution			-20 ~ 70° C (-4 ~ 158° F)	
Physical Characteristics	Dimensions (W x D)	244 x 244 mm (9.6" x 9.6")				

Board Diagram



Ordering Information

Part Number	VGA	GbE LAN
AIMB-564VG-00A1E	Yes	Single

*AIMB-564 cannot be installed in ACP-2000MB and 1U chassis.
 **We strongly suggest using only Advantech's certified LGA 775 CPU coolers to ensure board reliability under harsh conditions.

Riser Card

Part Number	Description
AIMB-RP3PF-21A1E	2U riser card for 1 PCIe x 16 and 2 PCI expansion

Bracket View



AIMB-564VG-00A1E

Packing List

Description	Quantity
IDE HDD cable	x 1
Serial ATA HDD data cable	x 4
Serial ATA HDD power cable	x 2
I/O port bracket	x 1
Startup manual	x 1
Utility CD	x 1

Accessories

Part Number	Description
1750000334	LGA775 CPU cooler (115W)
1750001661	LGA775 CPU cooler for 2U chassis
9680004525	TPM daughter board
1700006915	Power relay cable to activate ACP-4000 LED indicators
1700006916	Power relay cable to activate IPC-610H LED indicators