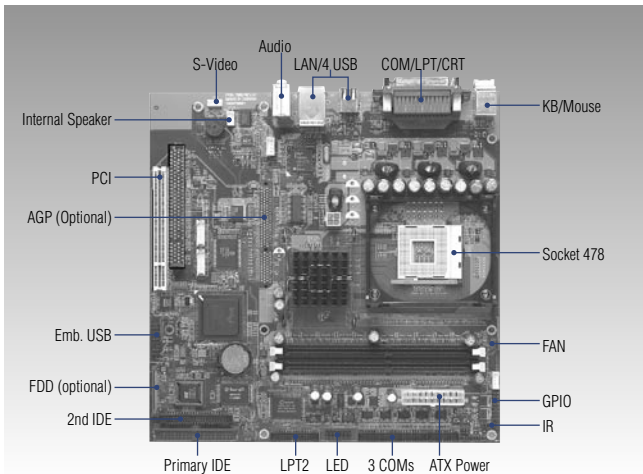


AIMB-340

Socket 478 Embedded ATX SBC
w/VGA, LCD, Audio, LAN



Specifications

General

- **CPU** Socket 478 Intel Pentium 4 Northwood processor up to 3.06 GHz/Celeron D
- **2nd Cache Memory** 256 KB/512 KB processor
- **System Chipset** Intel 82845GV/82845GE/82845G, (82845GE/82845G optional)
- **BIOS** AWARD® 256 KB flash BIOS
- **System Memory** 2 x DDR DIMM, Max. 2 GB
- **Power Management** APM 1.1
- **SSD** CompactFlash® card, DiskOnChip® support
- **Watchdog Timer** 1 ~ 62 sec, system reset
- **Expansion Interface** 1 x PCI, 1 x AGP (optional), 1 x miniPCI
- **Battery** Lithium 3 V/220 mAh

I/O

- **I/O Interface** 2 x EIDE (40-pin Ultra DMA 66 & 100 and 44-pin Ultra DMA 33), 1 x K/B, 1 x mouse, 1 x RS-232/422/485, 5 x RS-232, 2 x LPT
- **USB** 6 x USB 2.0
- **Audio** Supports Mic-in, Line-in, CD audio in, Line-out
- **IrDA** 115.2 kbps, IrDA 1.0 compliant
- **GPIO** 4 TTL digital out, 4 TTL digital in
- **Ethernet** Intel 82562 or 82551 ER 10/100 Mbps or, Intel 82540EM 10/100/1000 Mbps (optional)

Ethernet

- **Chipset** Intel 82562 or 82551 ER 10/100 Mbps or, Intel 82540EM 10/100/1000 Mbps (optional)
- **Speed** 10/100Base-T (optional: 10/100/1000Base-T)
- **Interface** 1 x RJ-45
- **Standard** IEEE 802.3, IEEE 802.3u, IEEE 802.3z/ab (optional)

Features

- Socket 478 for Intel® Pentium® 4/Celeron® D processors
- Onchip AGP 4X VGA/LCD & LCD controller supports 36-bit XGA TFT LCD panels at up to 1600 x 1200
- Two/six serial ports, one RS-232/422/485 the others are RS-232. COM 3 ~ 6 shared IRQ
- Six USB 2.0 ports & one embedded USB port
- Mini PCI socket for optional modem/WLAN
- I2C, DI/O interfaces
- System overheat temperature control
- 63-level watchdog timer, jumperless online setup supported
- TV out (optional)

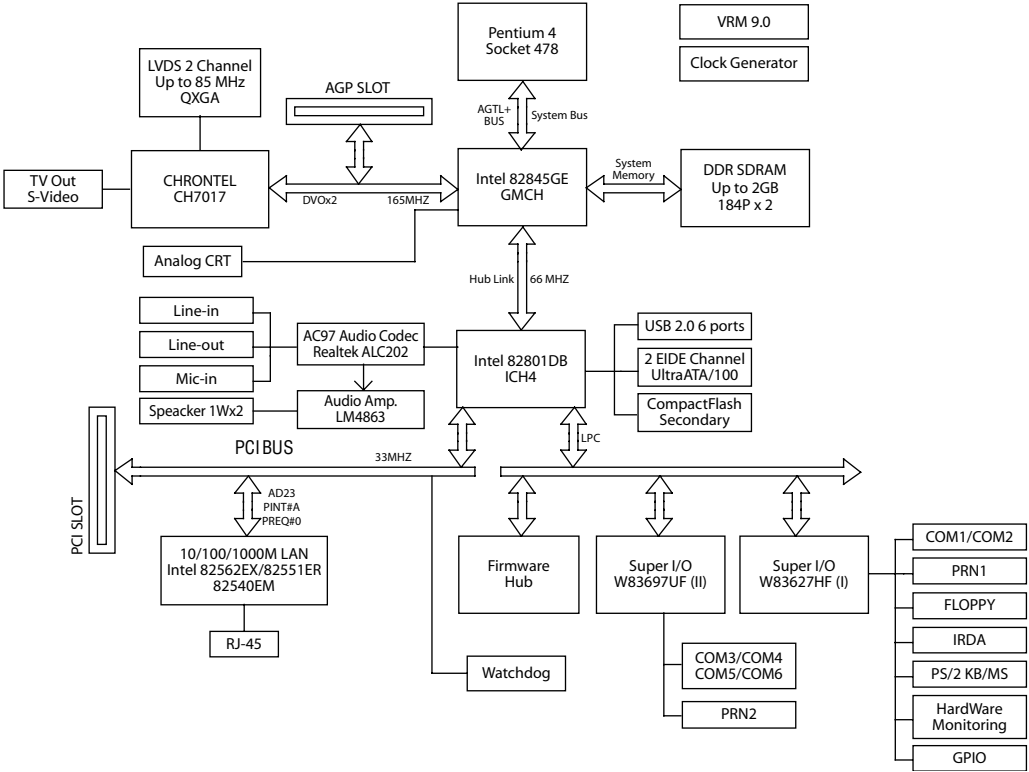
Display

- **Chipset** Intel 845GV, 845G/845GE (optional)
- **Memory Size** Intel Direct Memory Execution model uses system memory
- **Resolution** Maximum 3D resolution:
1600 x 1200 @ 32 bpp at 85 Hz
Maximum Video Overlay resolutions:
1600 x 1200 @ 32 bpp at 60 Hz
1280 x 1024 @ 32 bpp at 85 Hz

Mechanical and Environmental

- **Dimension (L x W)** 244 x 244 mm (9.6" x 9.6")
- **Weight** 0.8 kg (weight of total package)
- **Operating Temperature** 0 ~ 60° C (32 ~ 140° F), operation
- **Operating Humidity** 0% ~ 90% relative humidity, noncondensing
- **Power Supply Voltage:** +5 V ±5 %, +12 V ±5 %, -12 V ±5 %
- **Power Consumption** +12 V (System) @ 220 mA, +12 V (CPU) @ 4 A, -12 V @ 70 mA, +5 V @ 295 mA, +3.3 V @ 2.6 A (Pentium 4 3.06 GHz, 256 MB DDR333)

Board Diagram



Packing List

- 1 x AIMB-340 SBC
- 1 x Serial Cable 45 cm (p/n: 1700000445)
- 1 x 4-port serial cable 45 cm (AIMB-340F only) (p/n: 1700000447)
- 1 x IDE HDD cable (p/n: 1701400452)
- 1 x Secondary IDE cable (p/n: 1701440350)
- 1 x Jumper pack (p/n: 968900068)
- 1 x I/O shield (p/n: 1960001955)
- 1 x Startup Manual
- 1 x Utility CD

Optional Accessories

- Serial cable (p/n: 1701140201)
- UDMA/100 IDE flat cable (p/n: 1700000364)
- LPT cable (45 cm) (p/n: 1700000599)
- USB cable (2.54 mm) (p/n: 1700100170)
- P4 CPU FAN w/heatsink up to 2.8 GHz for 1U (p/n: 1759214200)
- FDD Cable 26P 12 cm (p/n: 1701260125)

Ordering Information

Part No.	LVDS	TV out	10/100	USB	RS-232	RS-232/422/485	GPIO	LPT	CF	miniPCI	PCI
AIMB-340F-00A2E	1	Yes	1	6	5	1	4 in, 4 out	2	Yes	Yes	1
AIMB-340L-00A2E	1	Yes	1	6	1	1	4 in, 4 out	1	Yes	Yes	1