

Configure ADAM-6100EI module in RSLogix 5000

Product:

ADAM-6100EI Series

Abstract:

Introduction of ADAM-6100EI Series connected to AB PLC

Description:

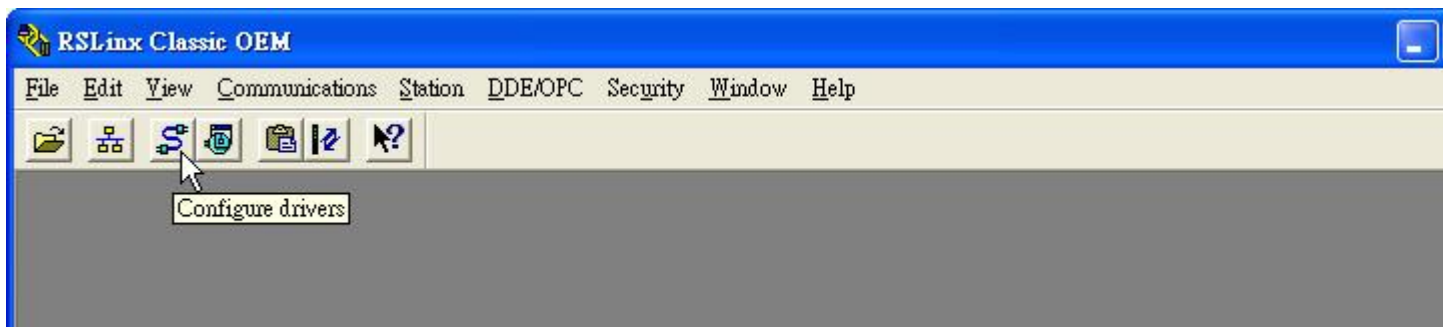
In this document, we will demonstrate how to connect ADAM-6100EI module to AB PLC using RSLogix by manual method and utility method

Contents

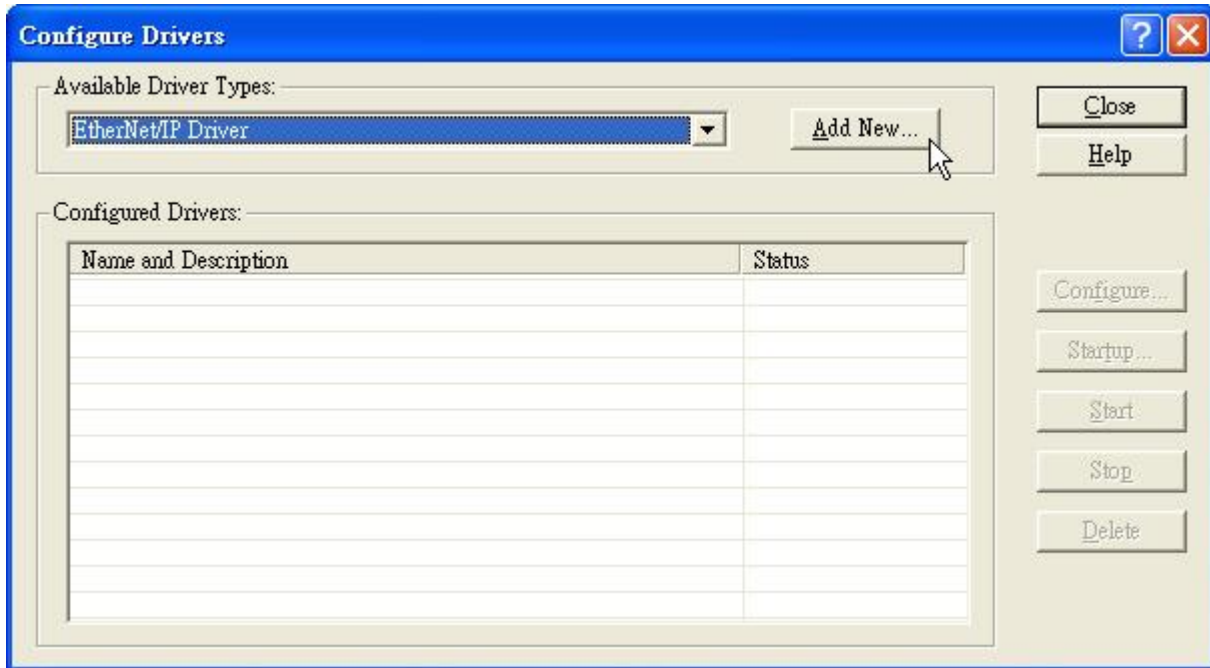
- Use RSLinx to Configure Driver
- Add Controller and ADAM-6100EI module in RSLogix
- Add ADAM-6100EI Module by Utility

Use RSLinx to Configure Driver

1. Open RSLinx and click [Configure drivers] button



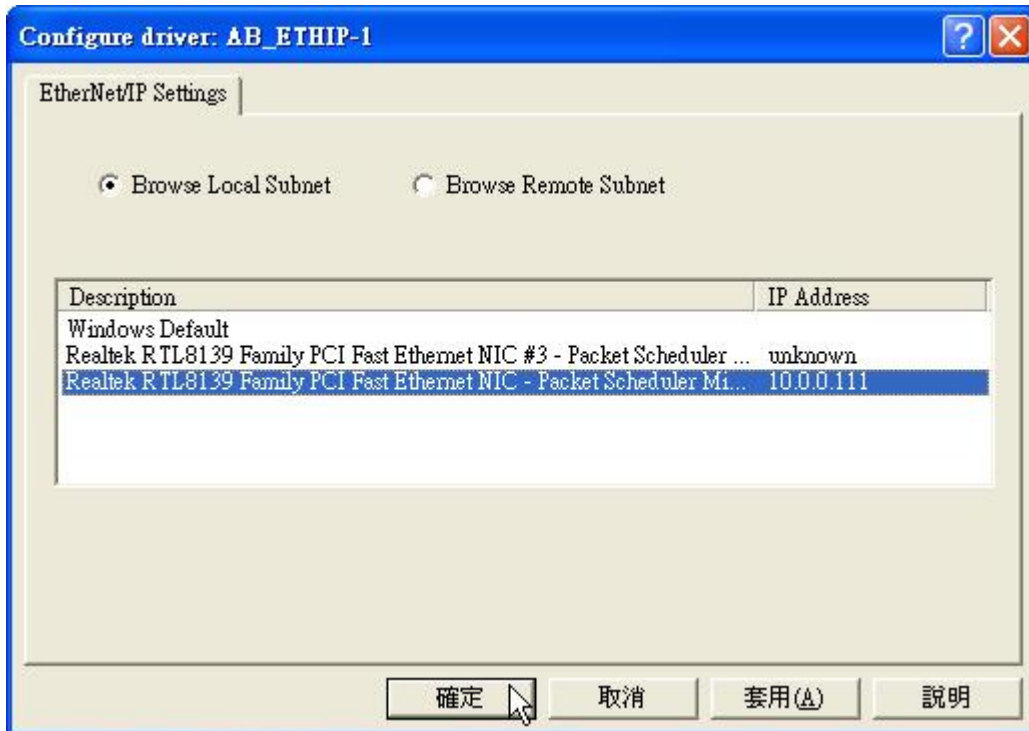
2. Select [Available Driver Types: EtherNet/IP Driver] and click [Add New...]



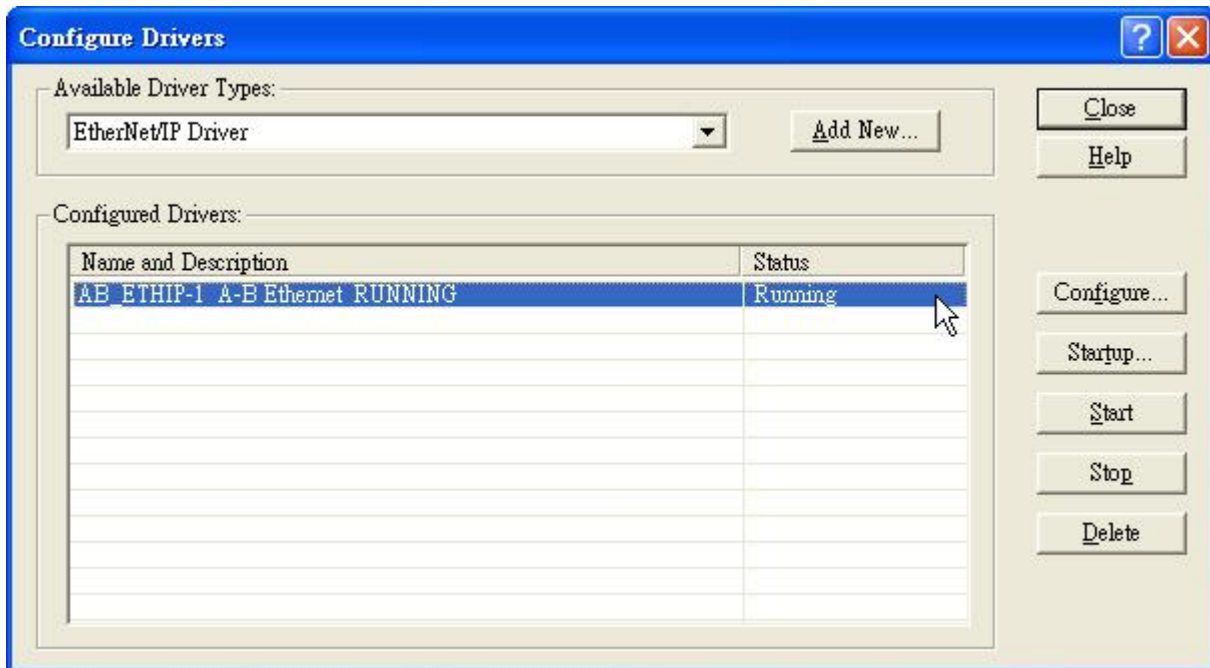
3. Assign a name and click [OK]



4. Choose the network card that connected to PLC and click [OK]

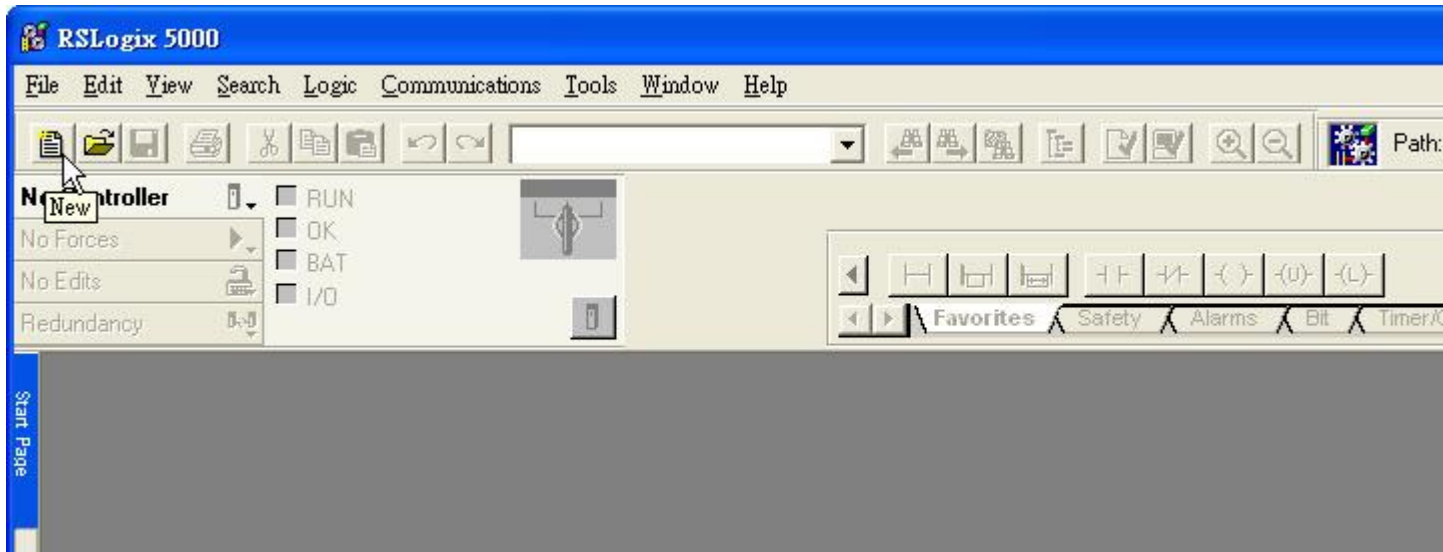


5. The driver have been added and running

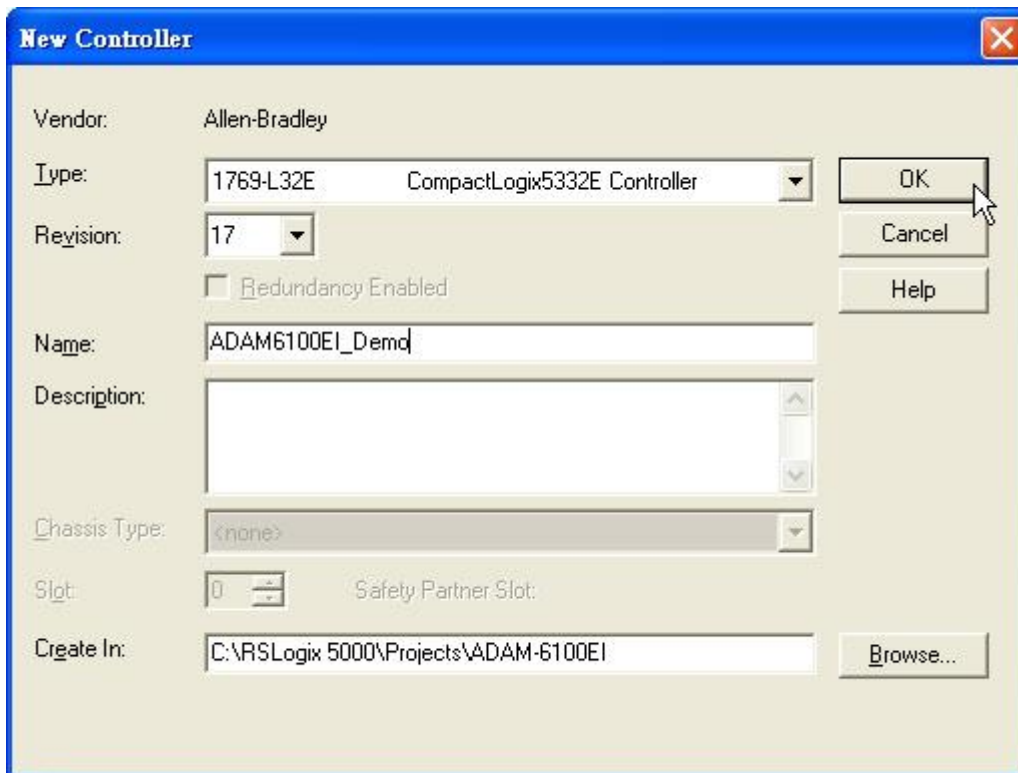


Add Controller and ADAM-6100EI module in RSLogix

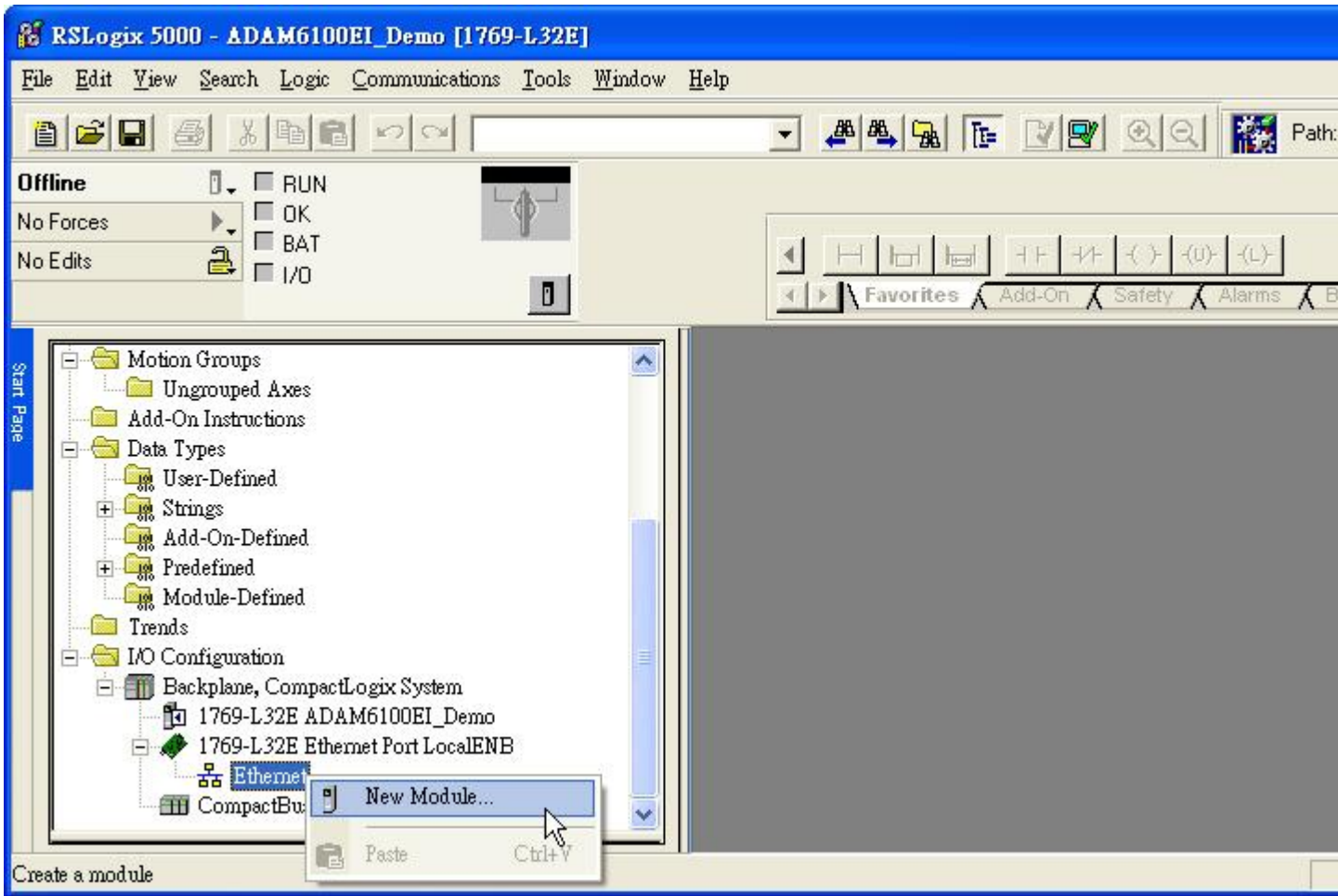
1. Open RSLogix 5000 and click [New] button



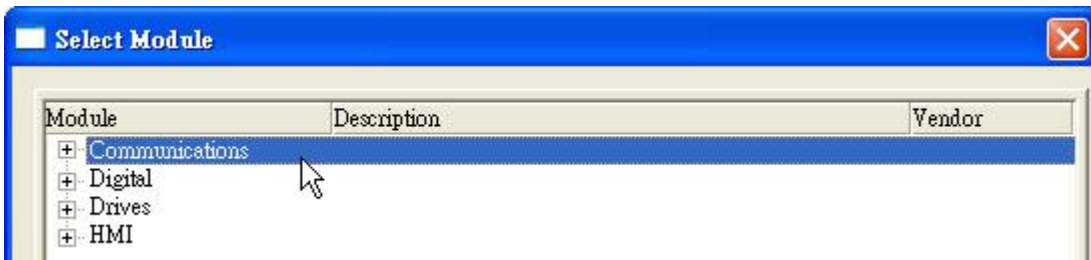
2. Select PLC type and give the project a name then click [OK]

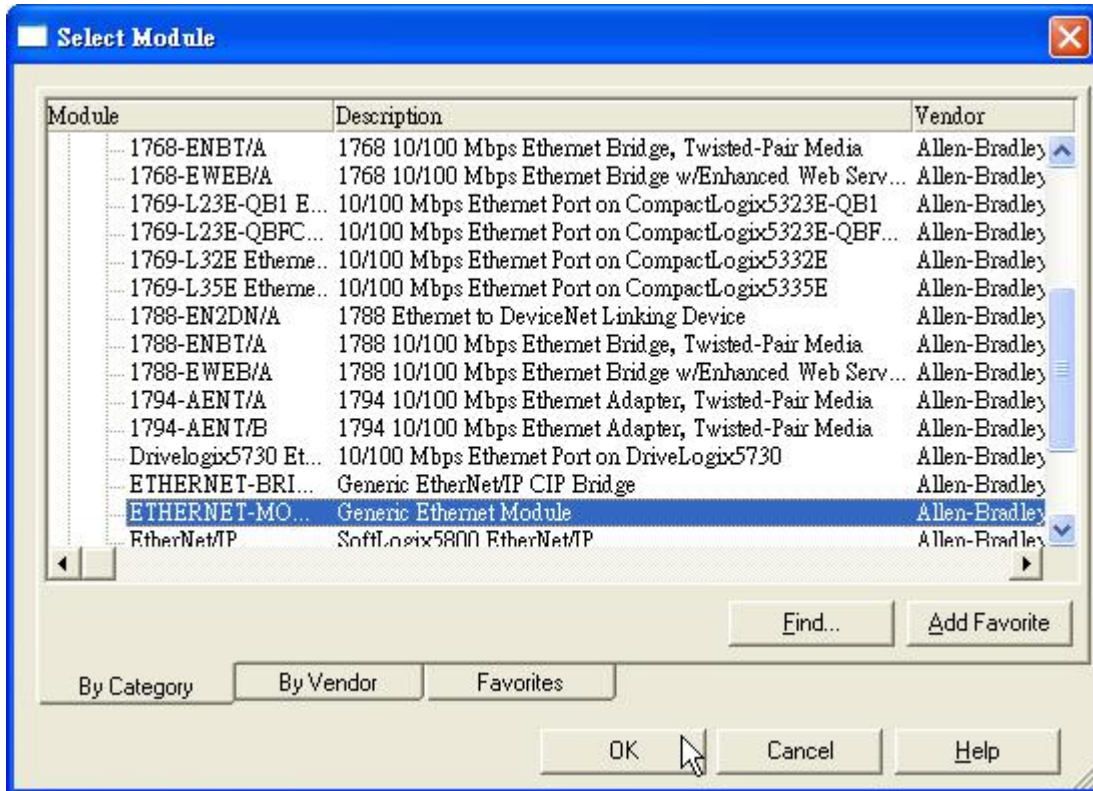


3. Right click [Ethernet] under PLC in the tree and click [New Module...]

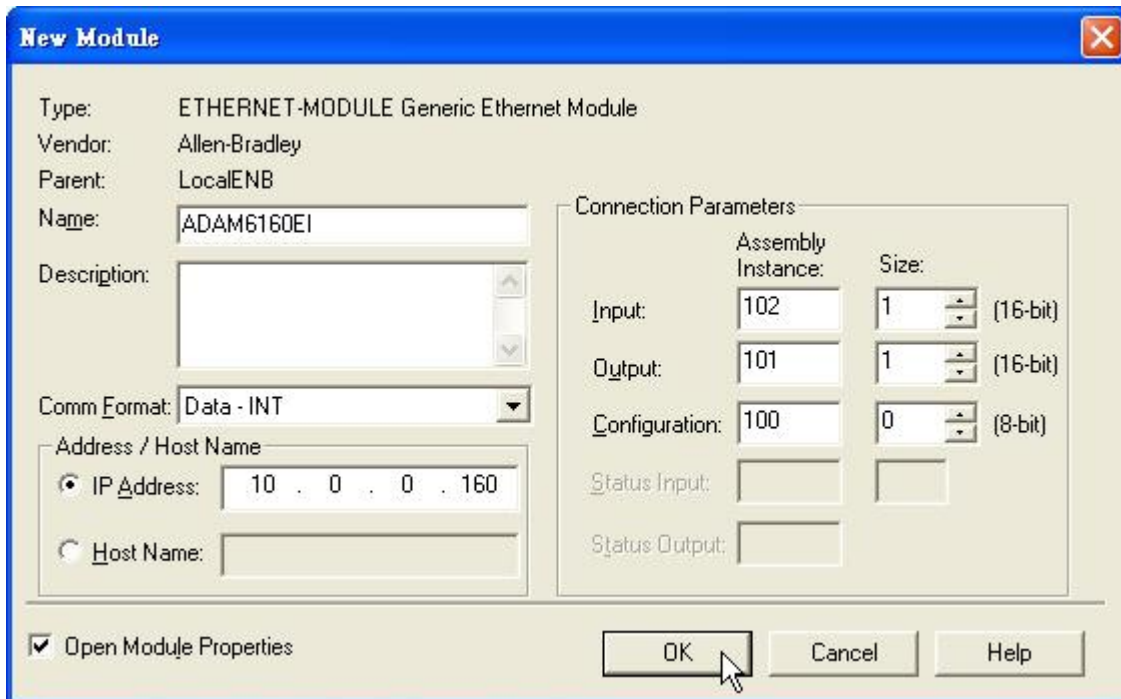


4. Choose [Communications \ ETHERNET-MODULE] and click [OK]

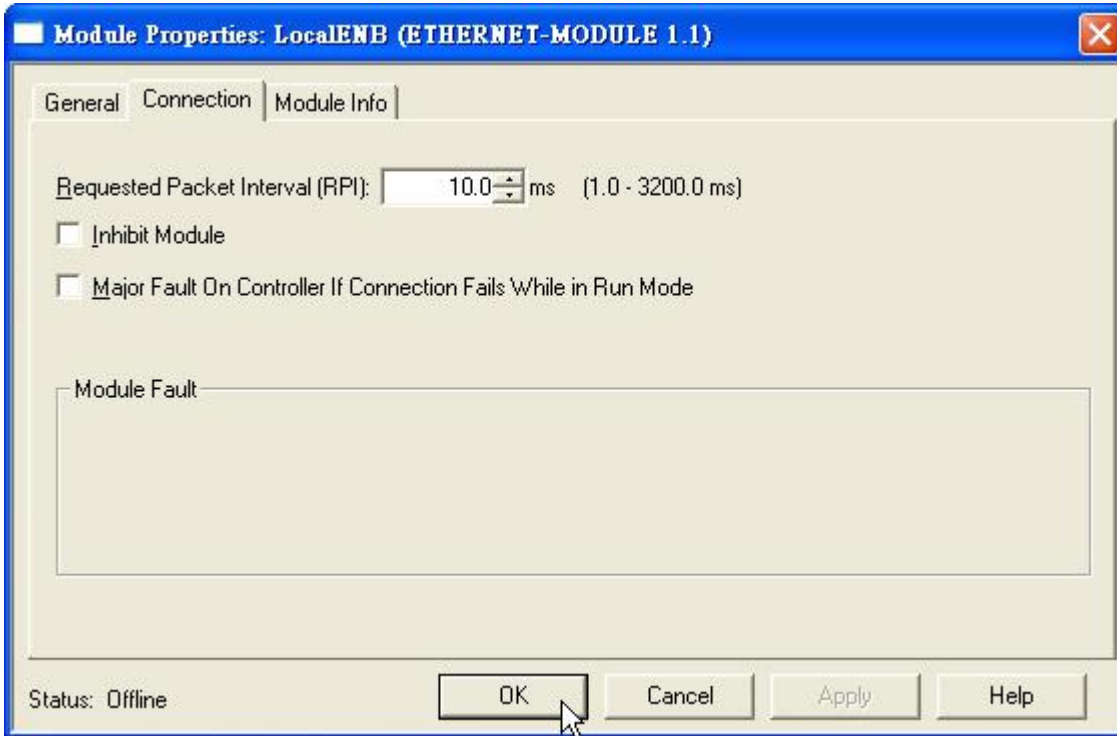




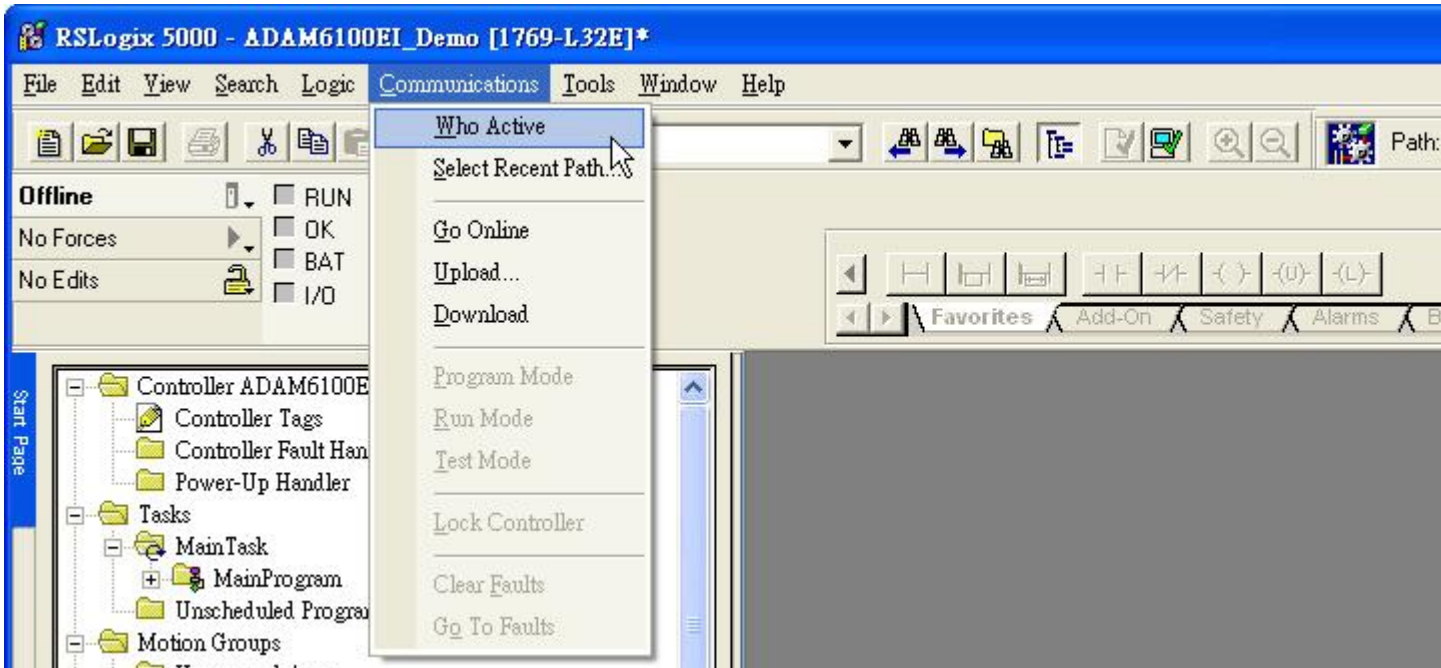
5. Give module a name. Here use ADAM-6160EI as example. Fill in the [Comm Format], [IP Address], and [Connection Parameters]. Click [OK]



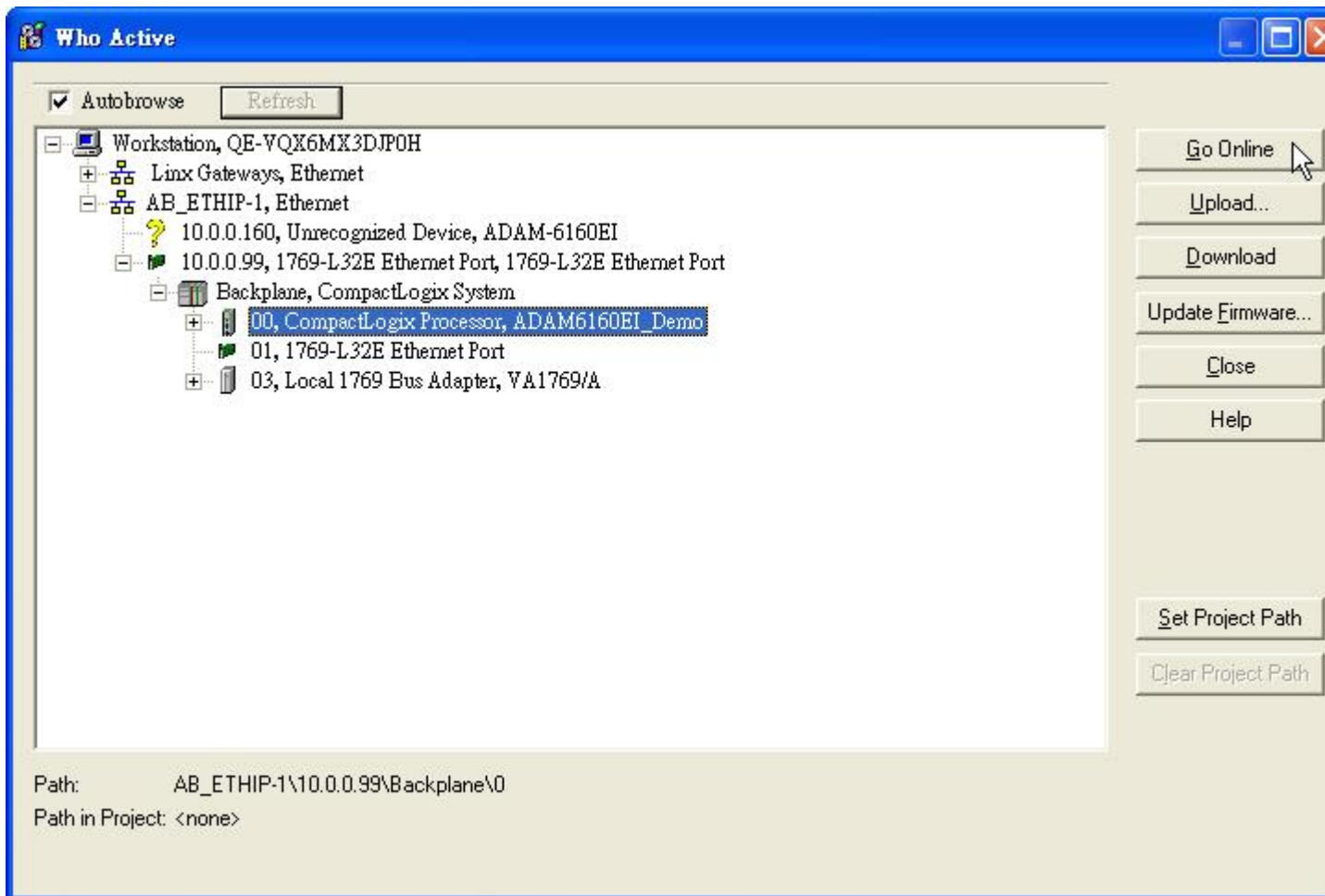
6. Setting [Connection] and click [OK]



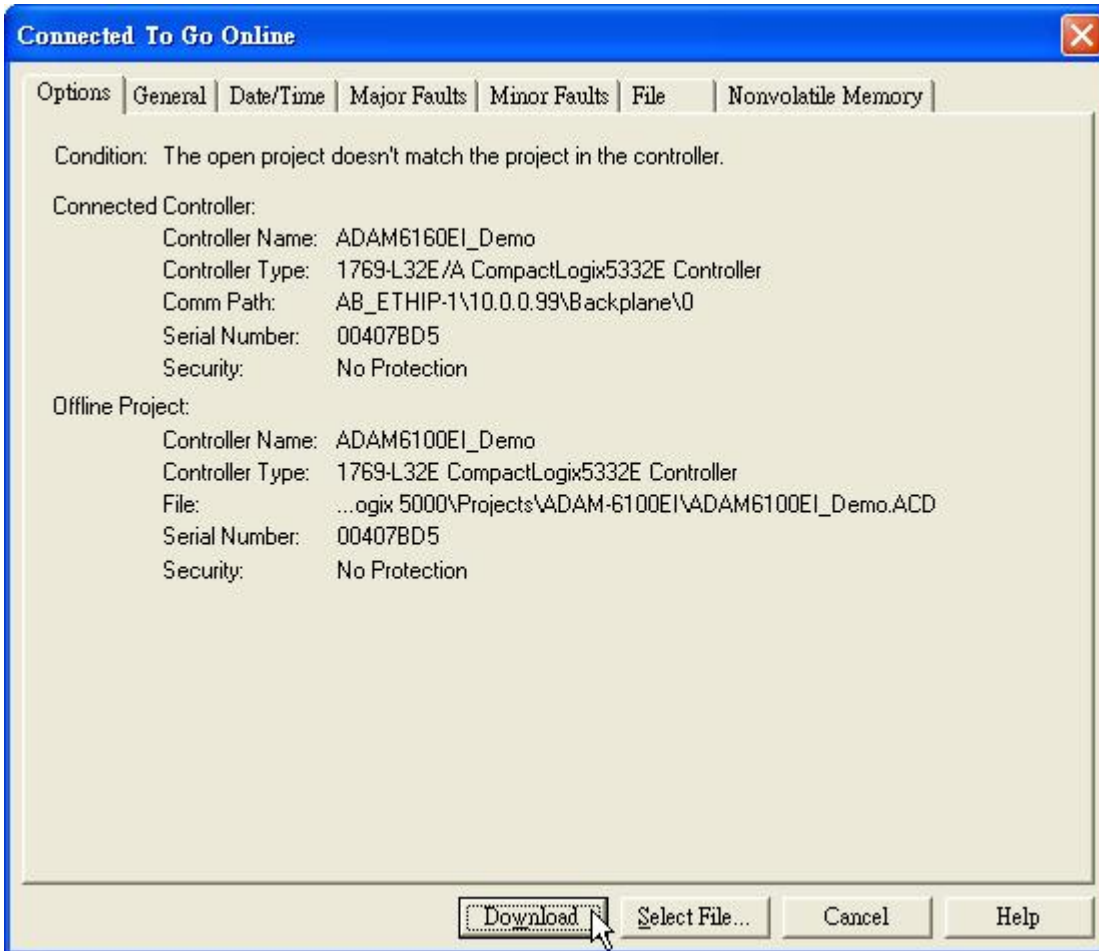
7. Click [Communication \ Who Active]



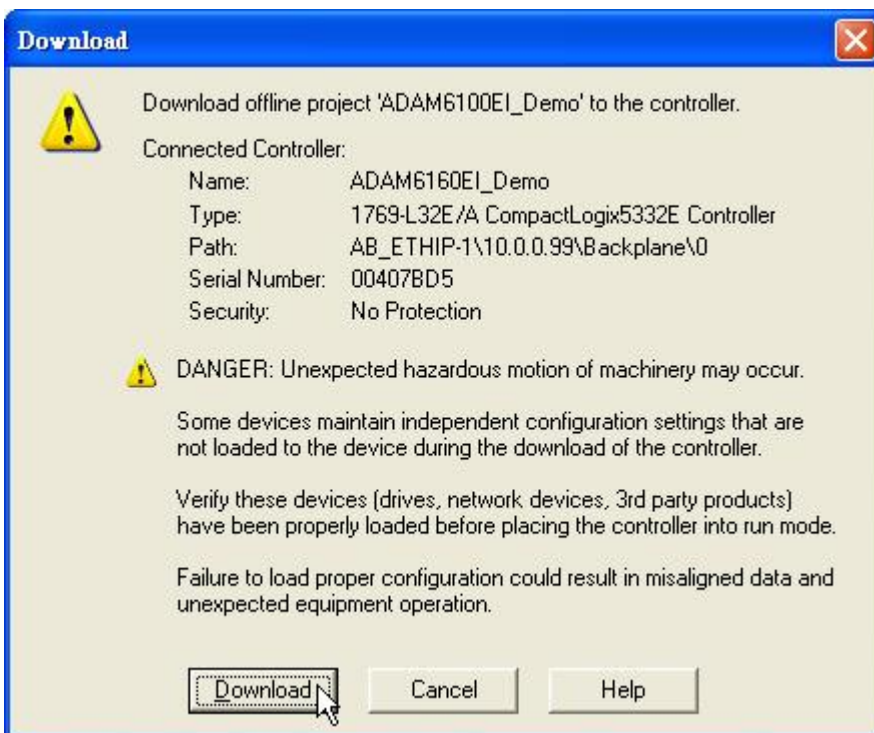
8. Choose the Processor and click [Go Online]



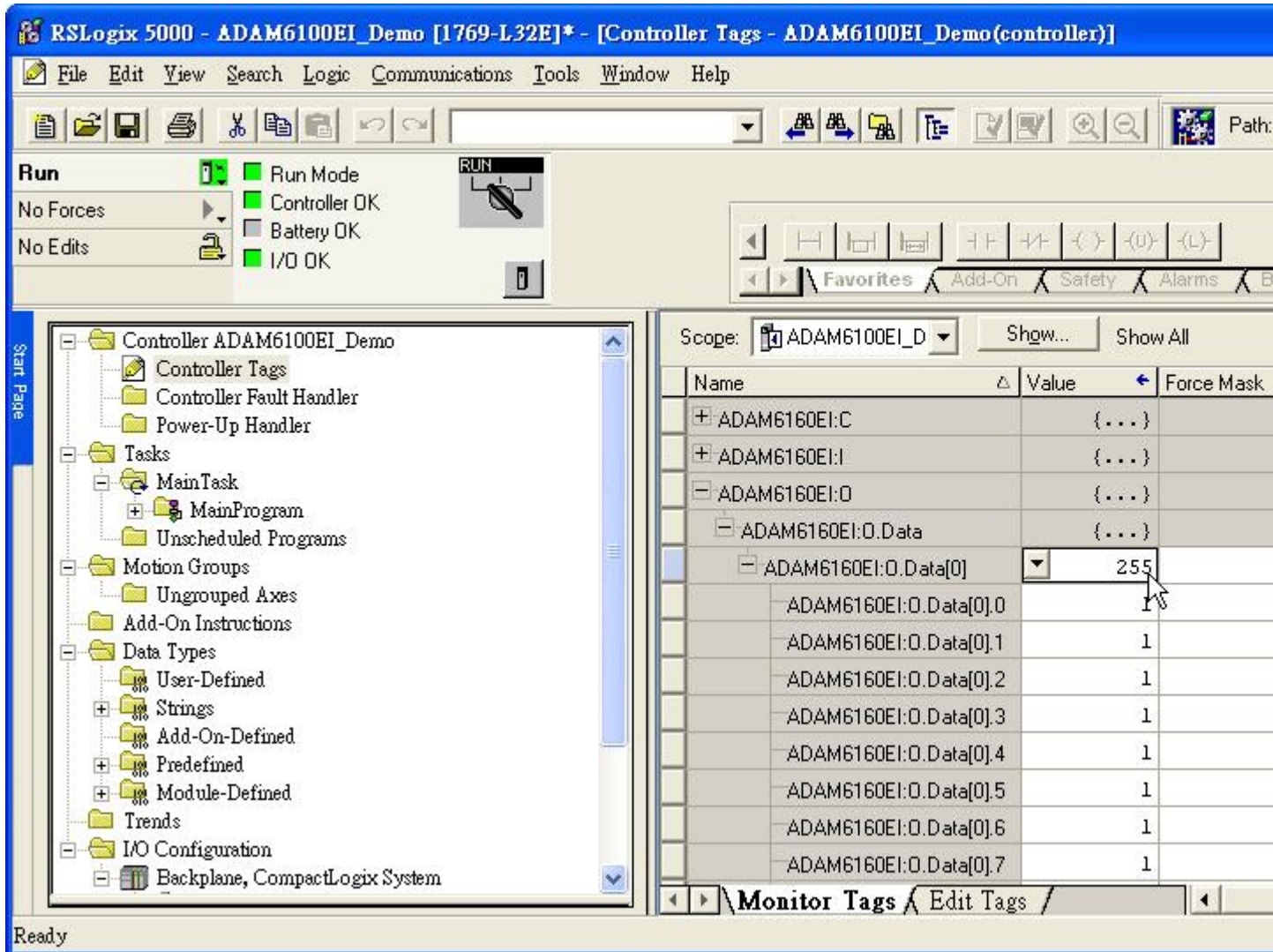
9. Click [Download]



10. Click [Download]

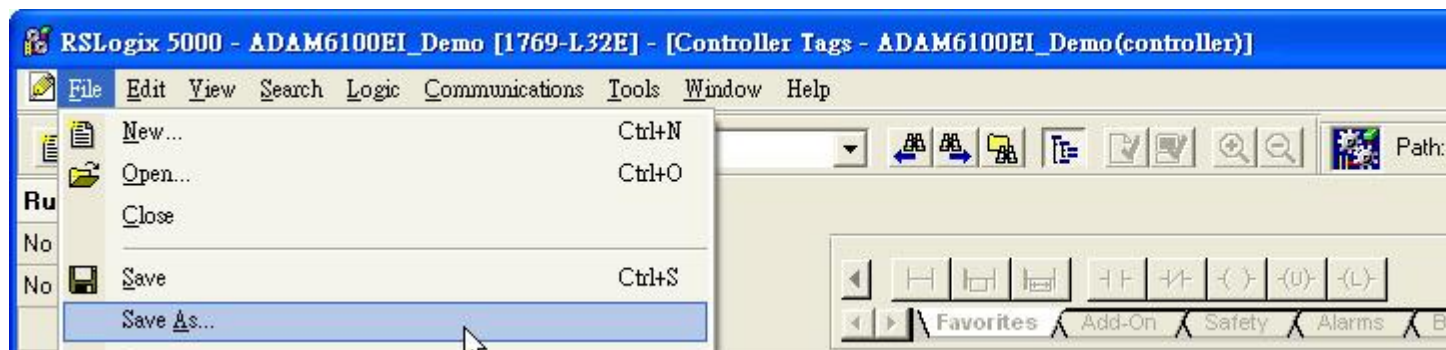


11. Switch PLC to [RUN] and change ADAM-6100EI module to [Normal] mode
12. Click [Controller Tags] to monitor the state of module
13. Give the value [255] to [ADAM6160EI:O.Data[0]] to on all the outputs

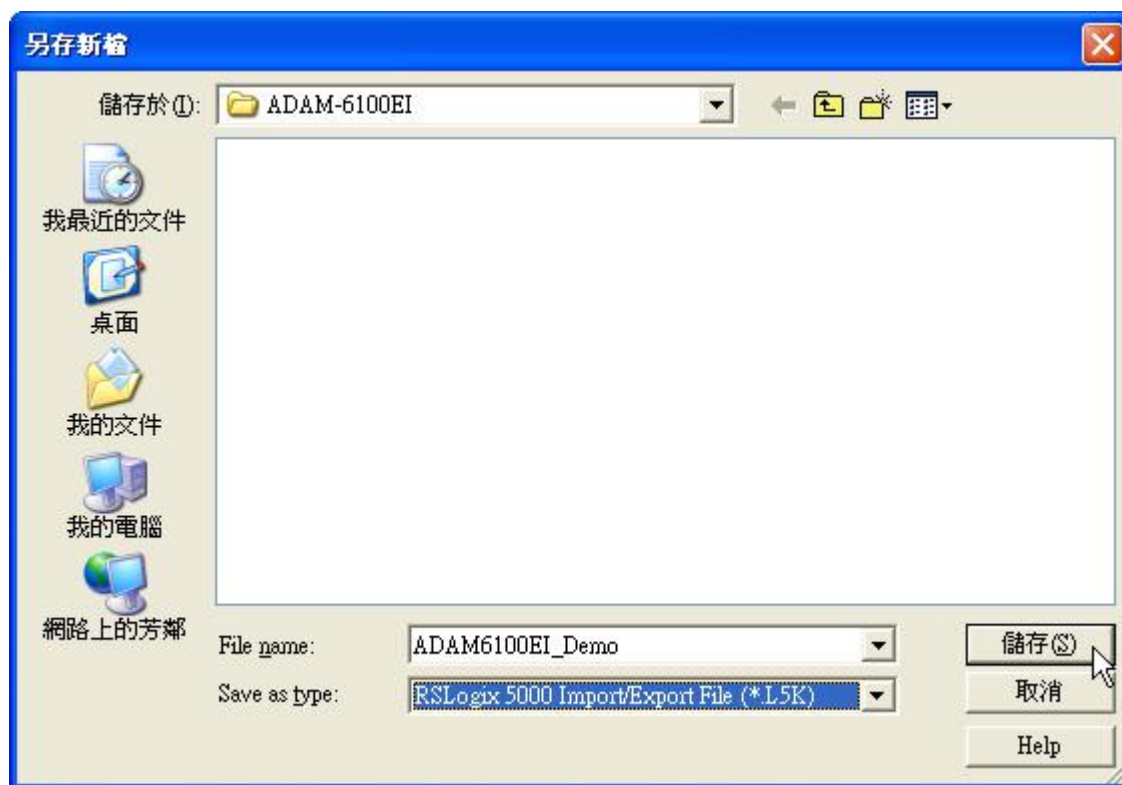


Add ADAM-6100EI Module by Utility

1. Click [File \ Save As...]



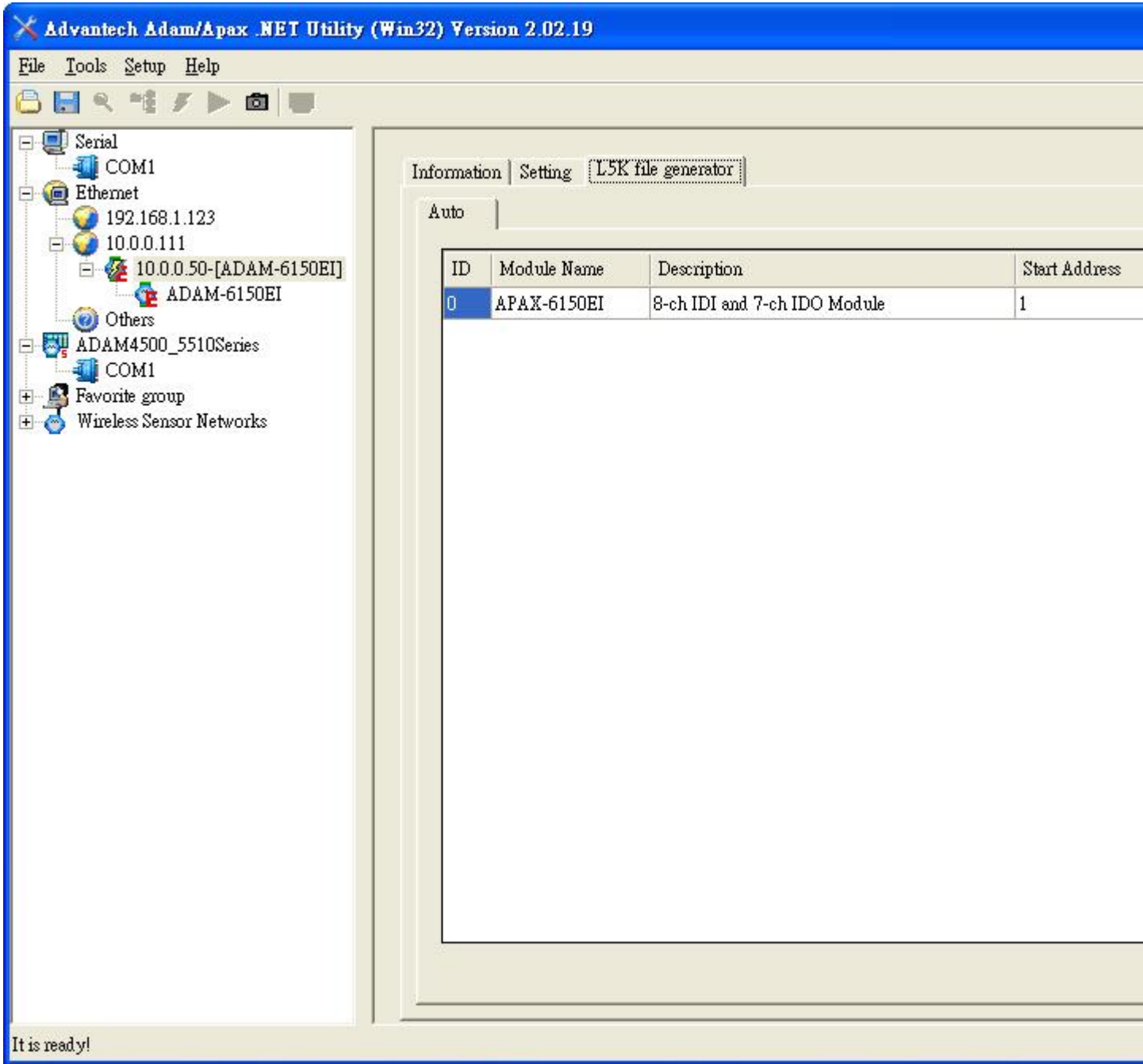
2. Save file as type [* .L5K] and click [Save]



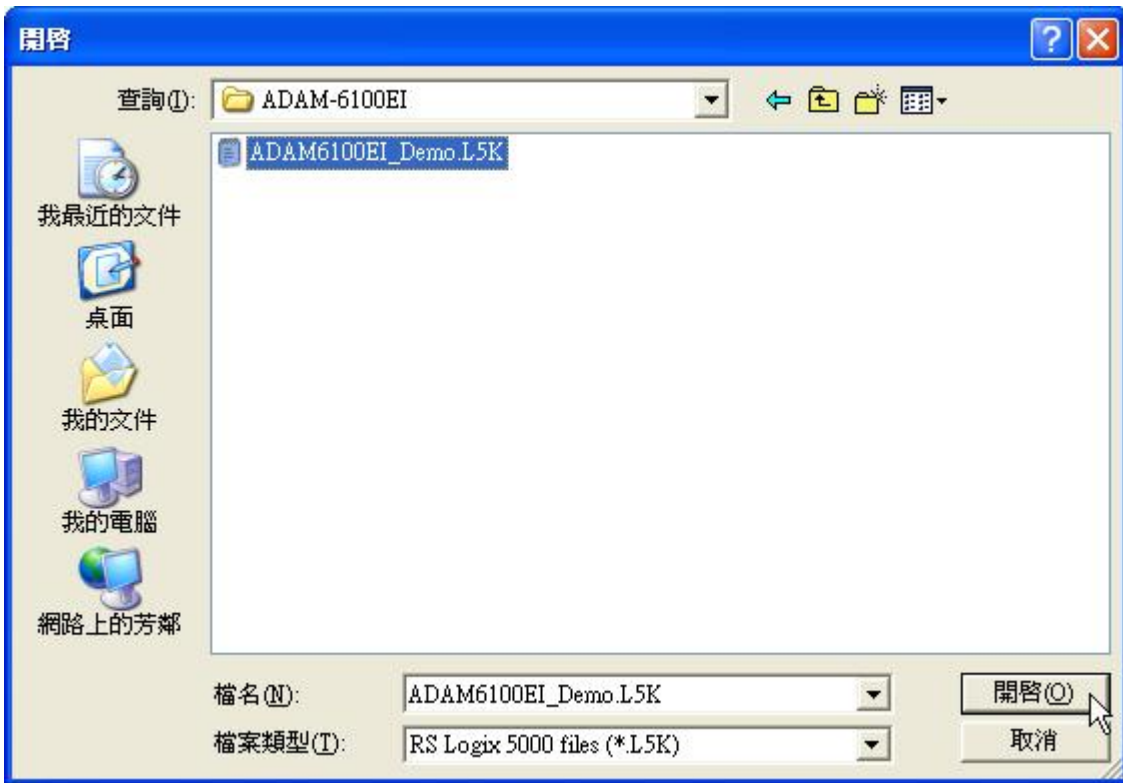
3. Switch ADAM-6100EI module to [Init] mode
4. Open Adam/Apax .NET Utility and search the module



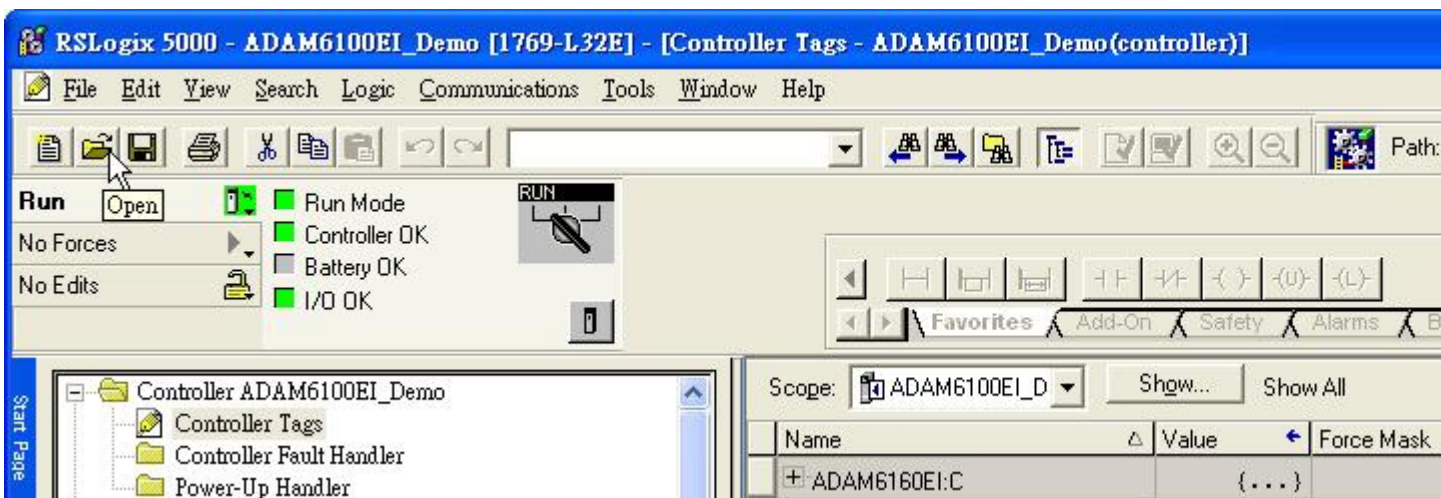
5. Click [Generate] button under [L5K file generator] tab



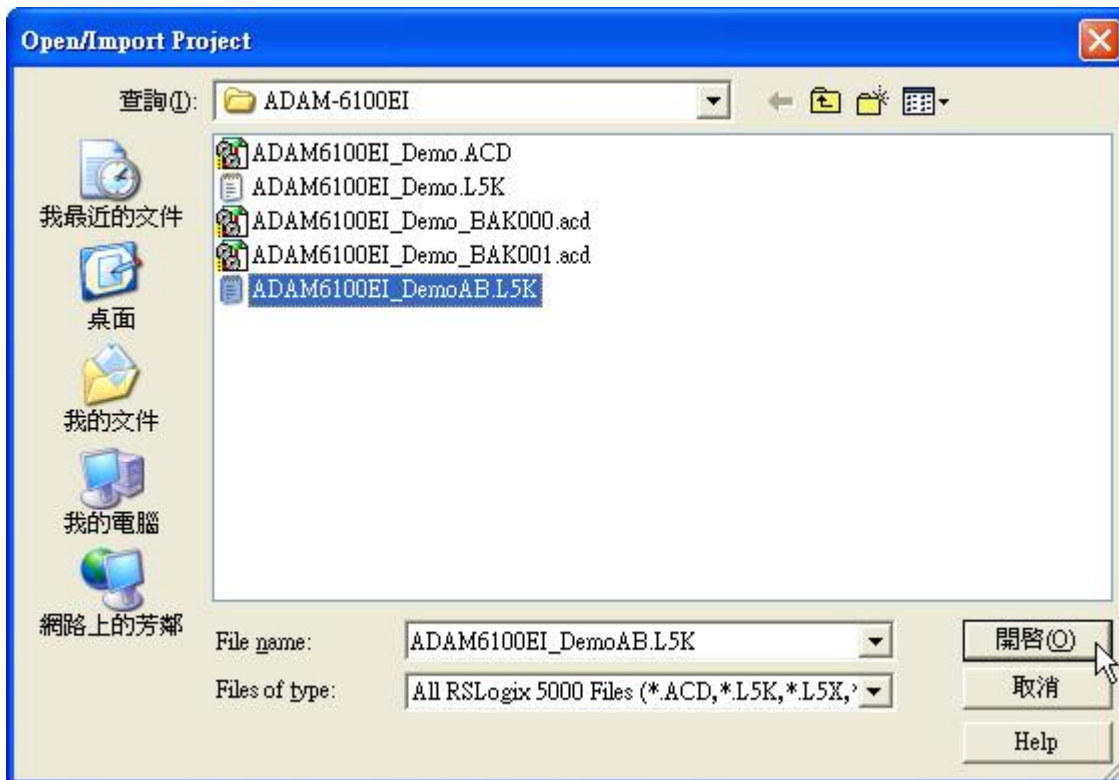
- Open the [*L5K] file that have just been saved, and click [OK] to finish. Remember to switch the module back to [Normal] mode



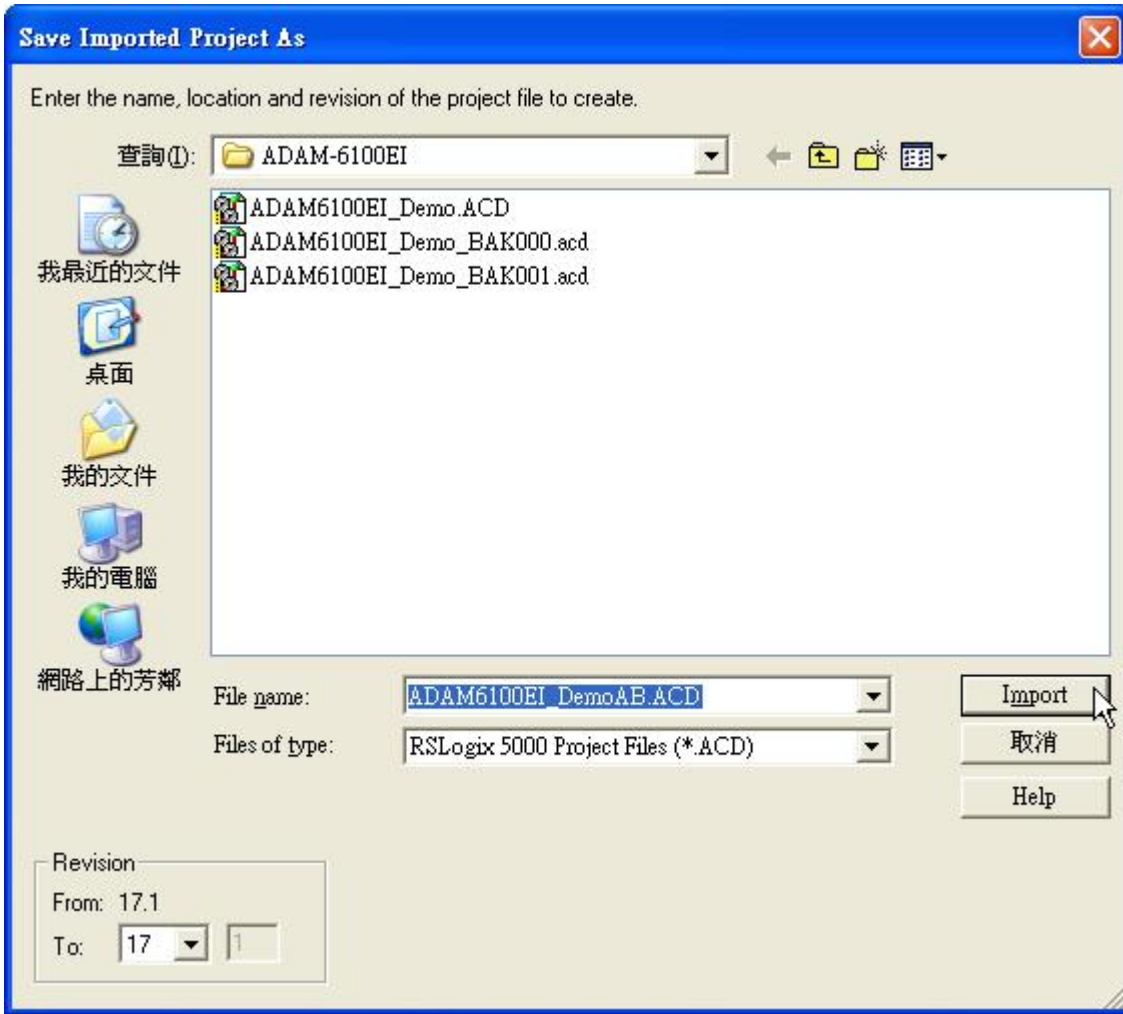
- Click [Open] button in RSLogix 5000



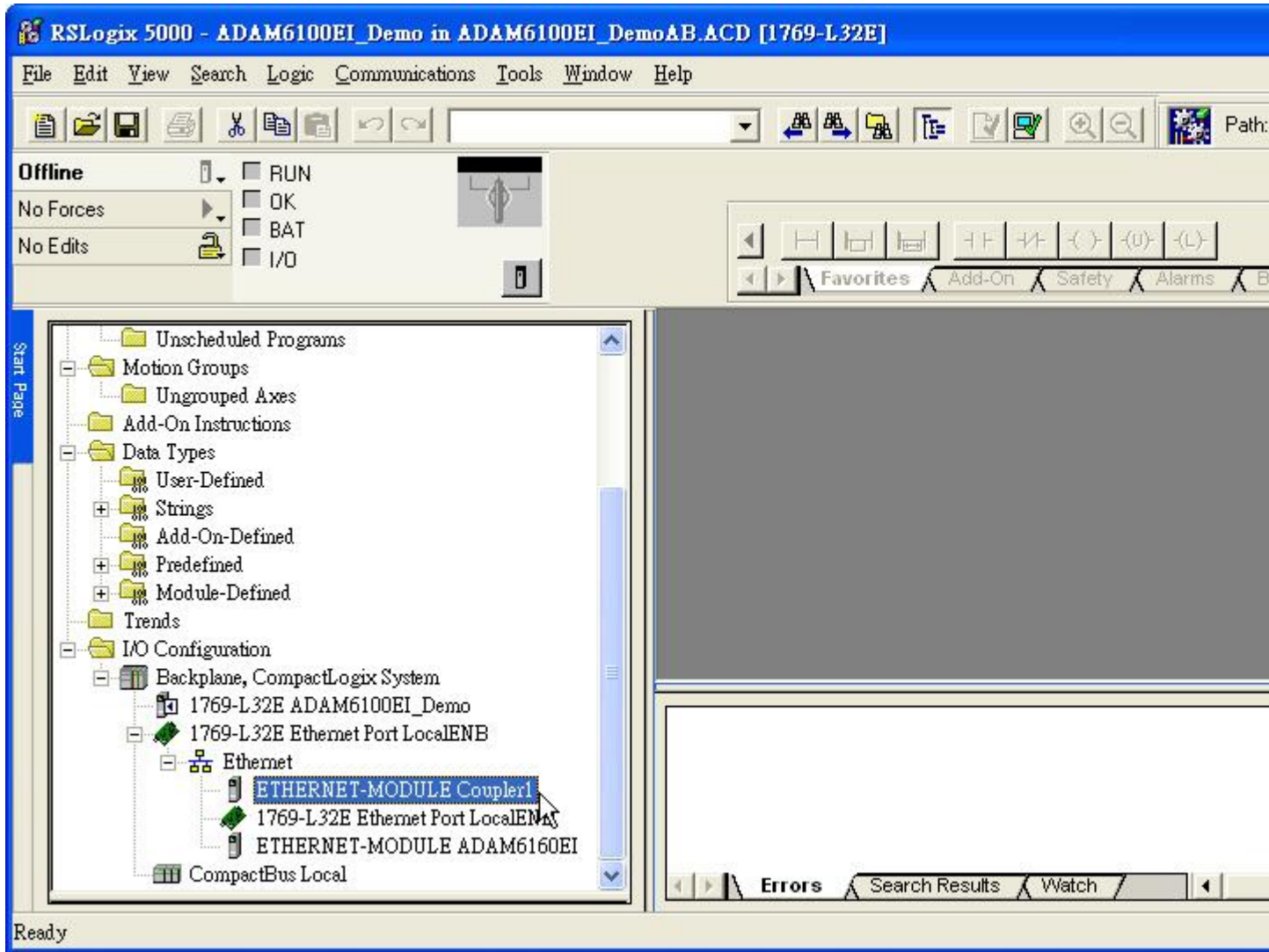
8. Select the [*AB.L5K] file that have been add the word “AB” and click [Open]



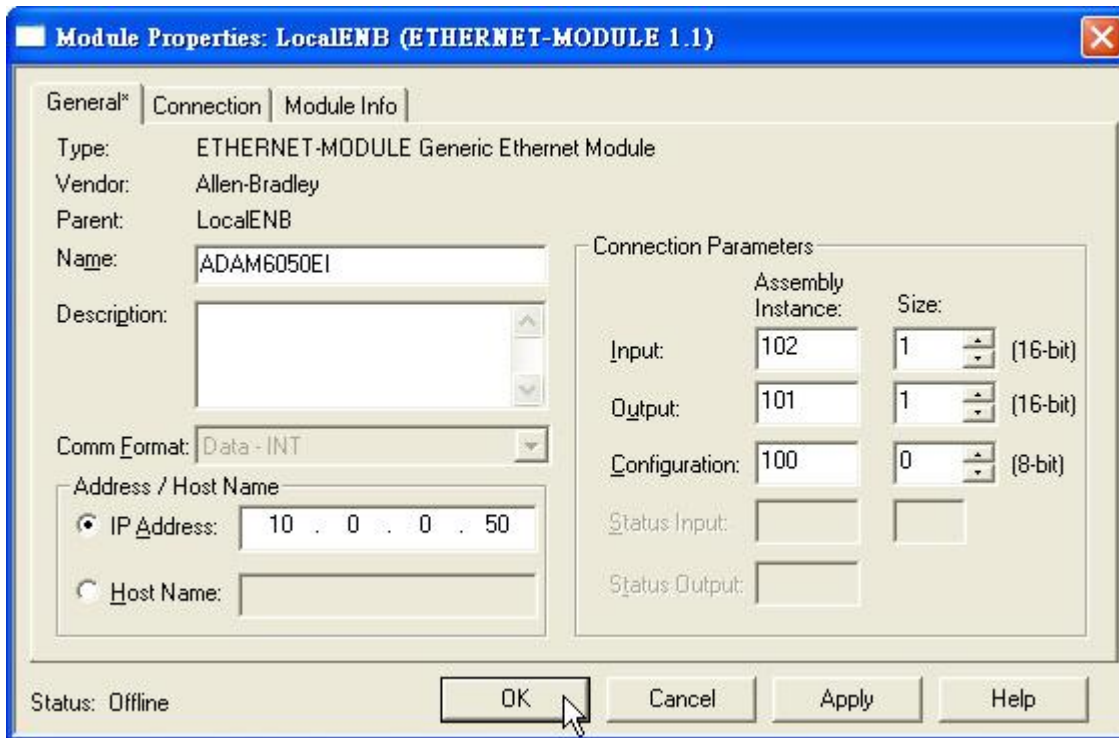
9. Click [Import] to save the imported file



10. The module have been added and named as coupler double click the module to edit

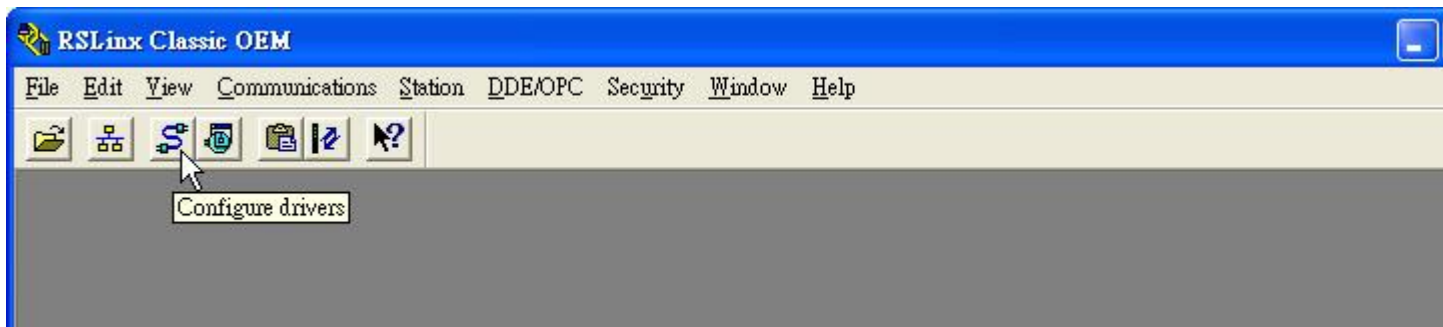


11. [Comm Format], [IP Address], and [Connection Parameters] have been set automatically, user can rename the module as following figure

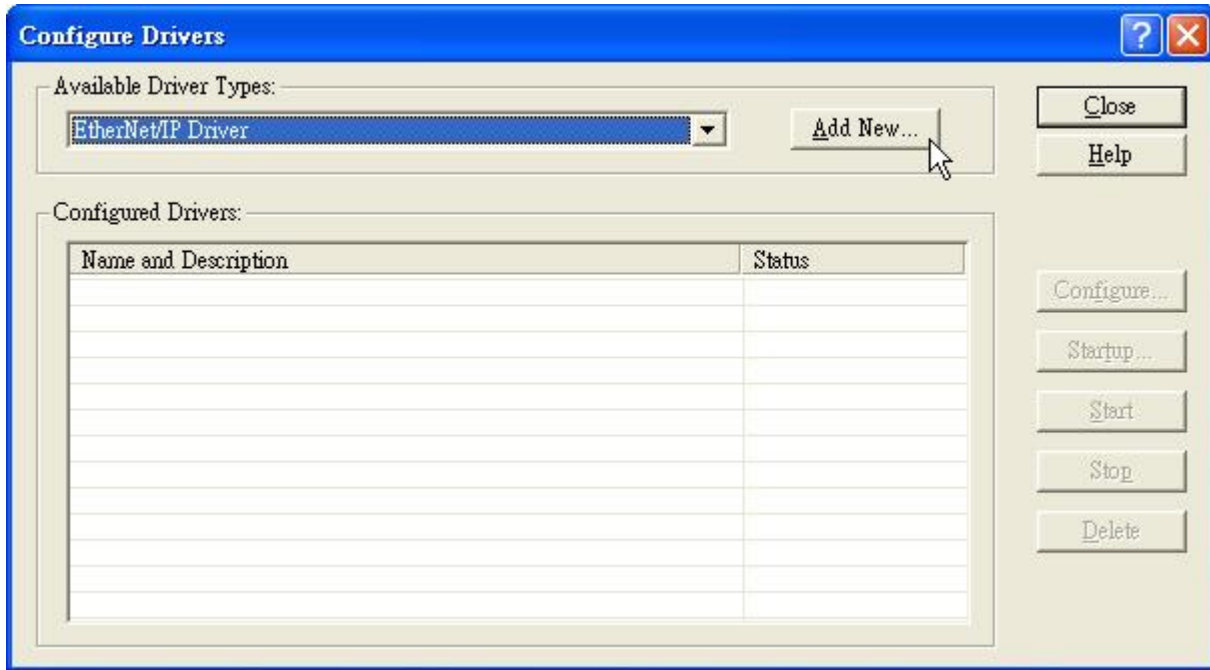


Use RSLinx to Configure Driver

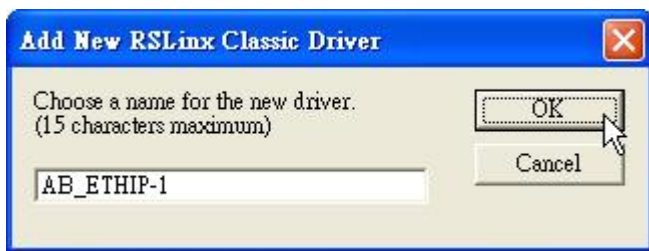
6. Open RSLinx and click [Configure drivers] button



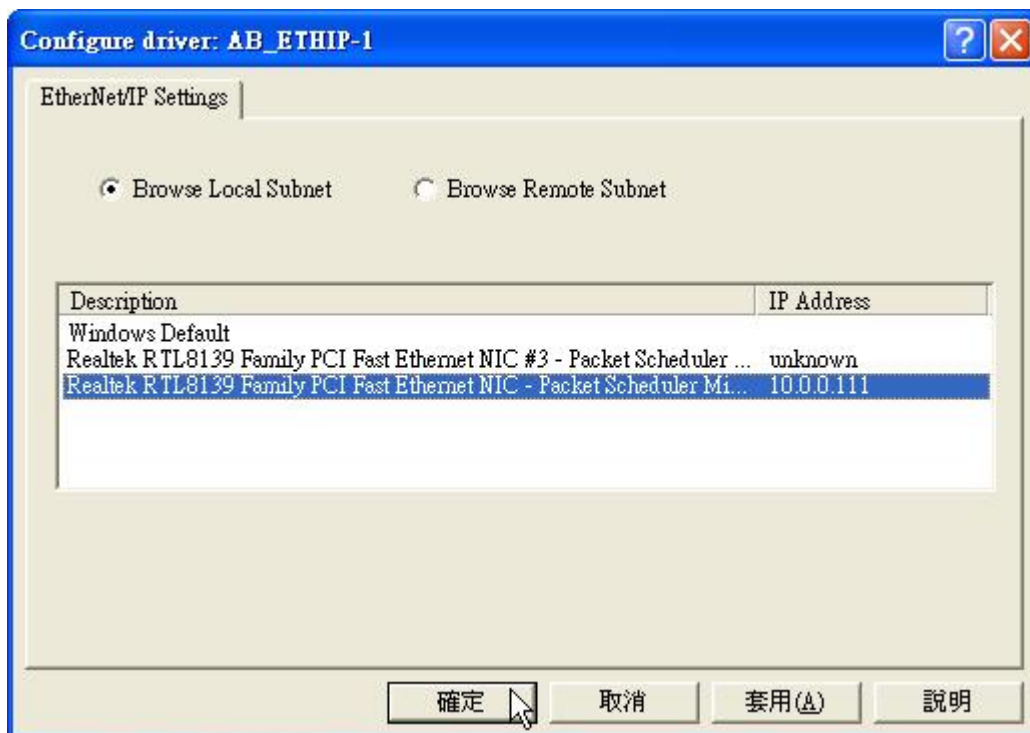
7. Select [Available Driver Types: EtherNet/IP Driver] and click [Add New...]



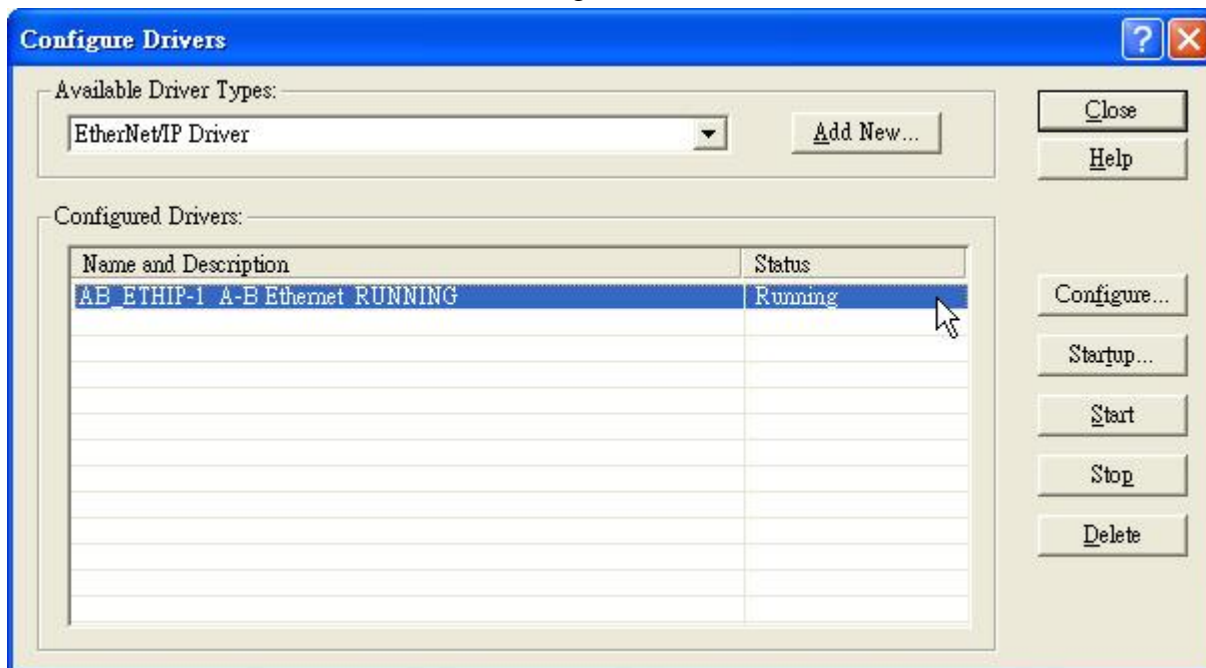
8. Assign a name and click [OK]



9. Choose the network card that connected to PLC and click [OK]

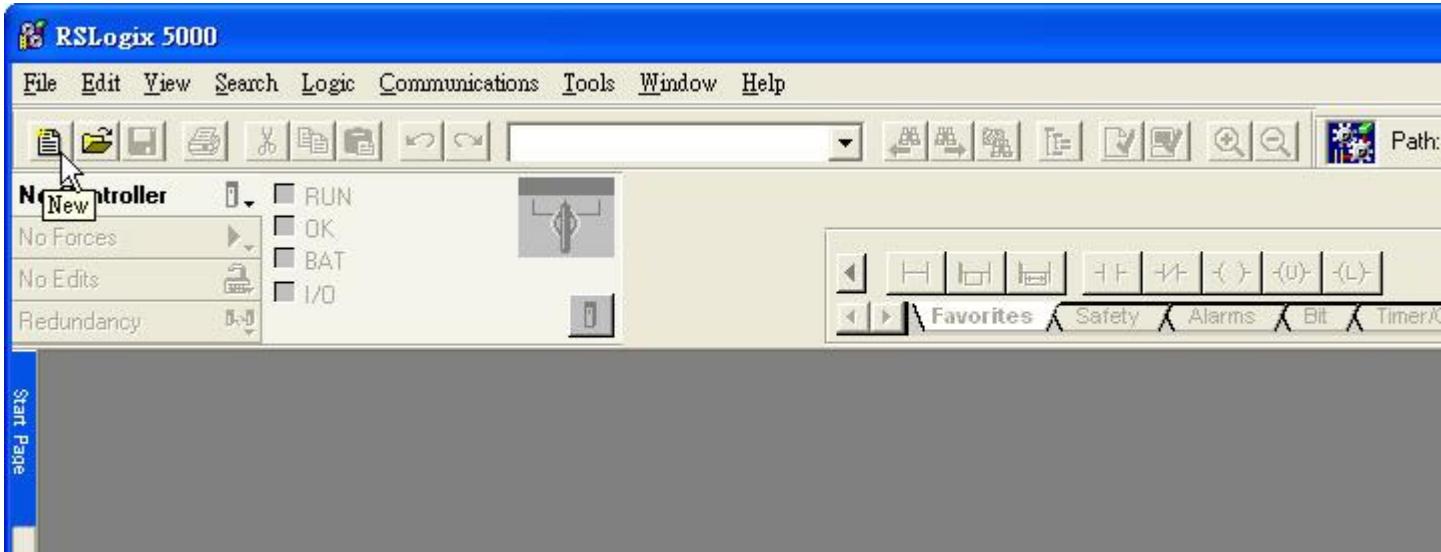


10. The driver have been added and running

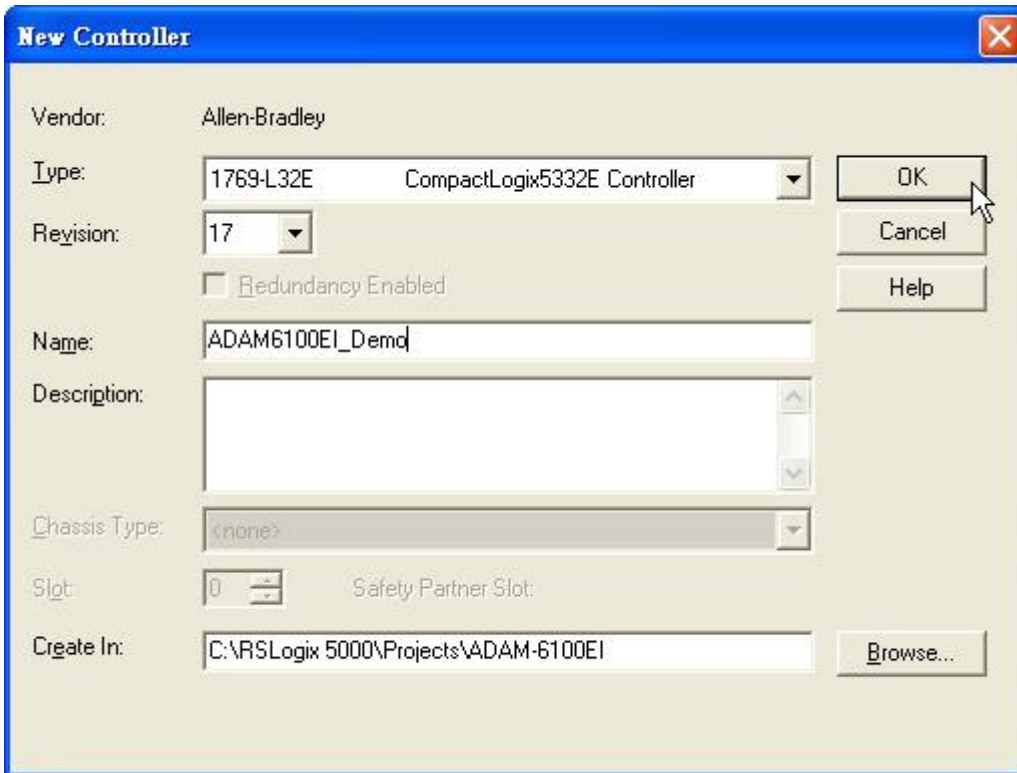


Add Controller and ADAM-6100EI module in RSLogix

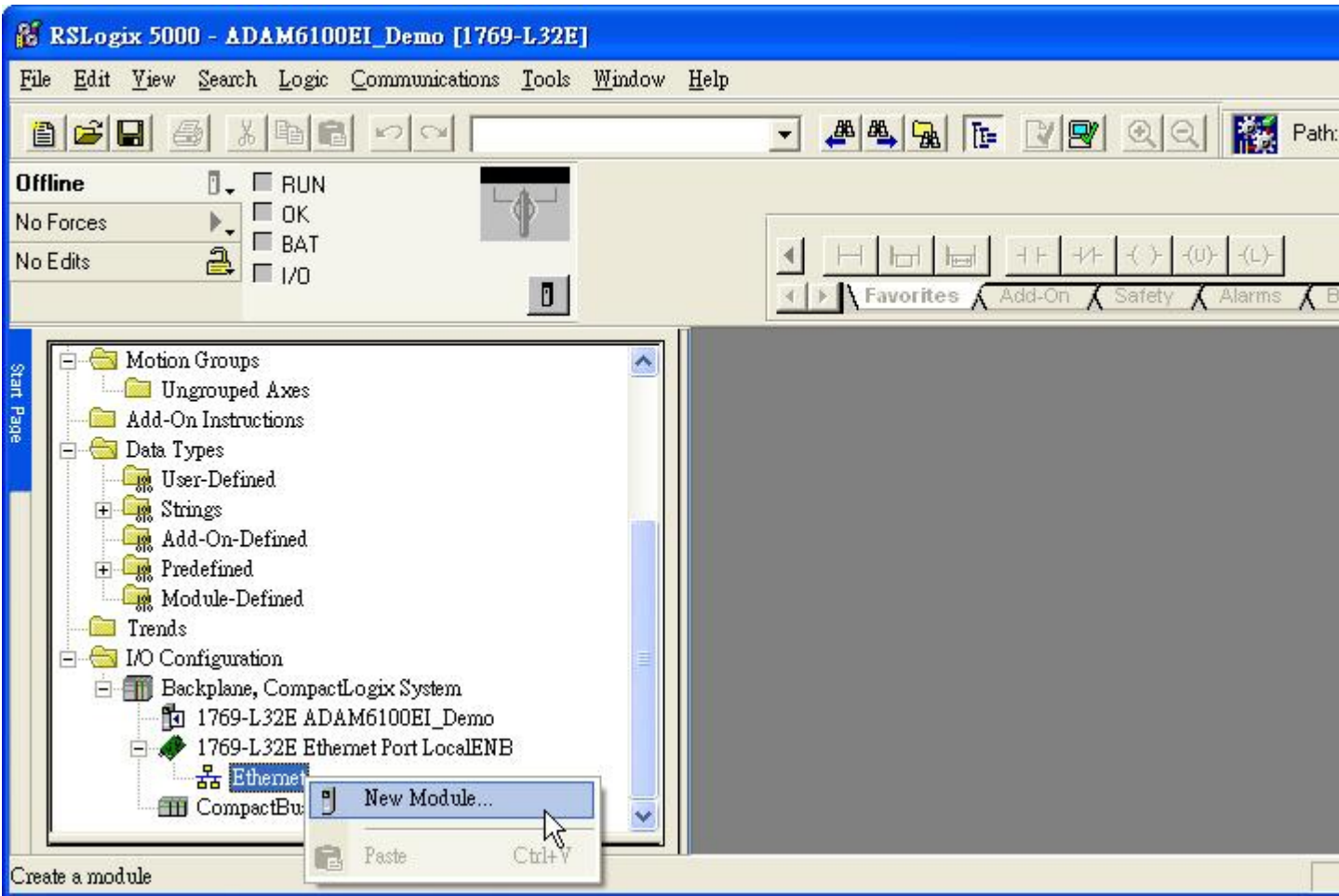
14. Open RSLogix 5000 and click [New] button



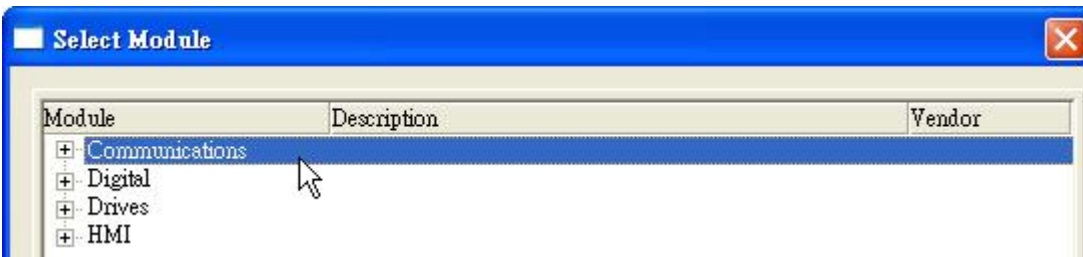
15. Select PLC type and give the project a name then click [OK]

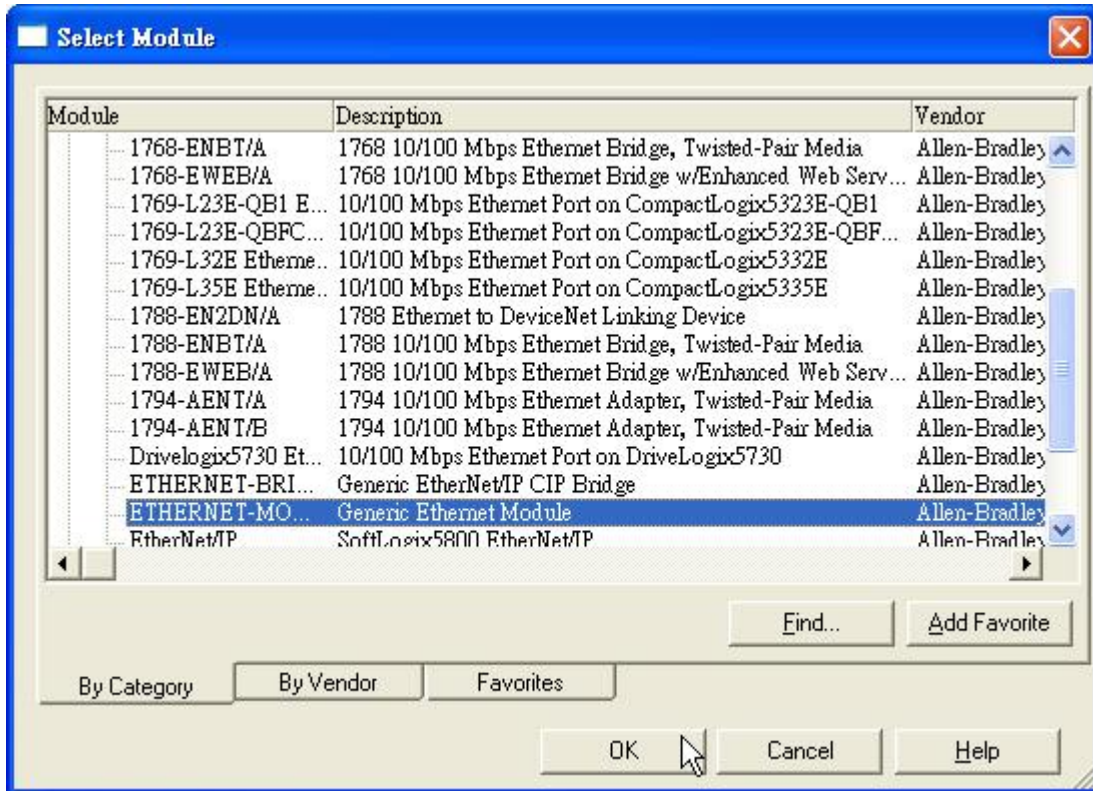


16. Right click [Ethernet] under PLC in the tree and click [New Module...]

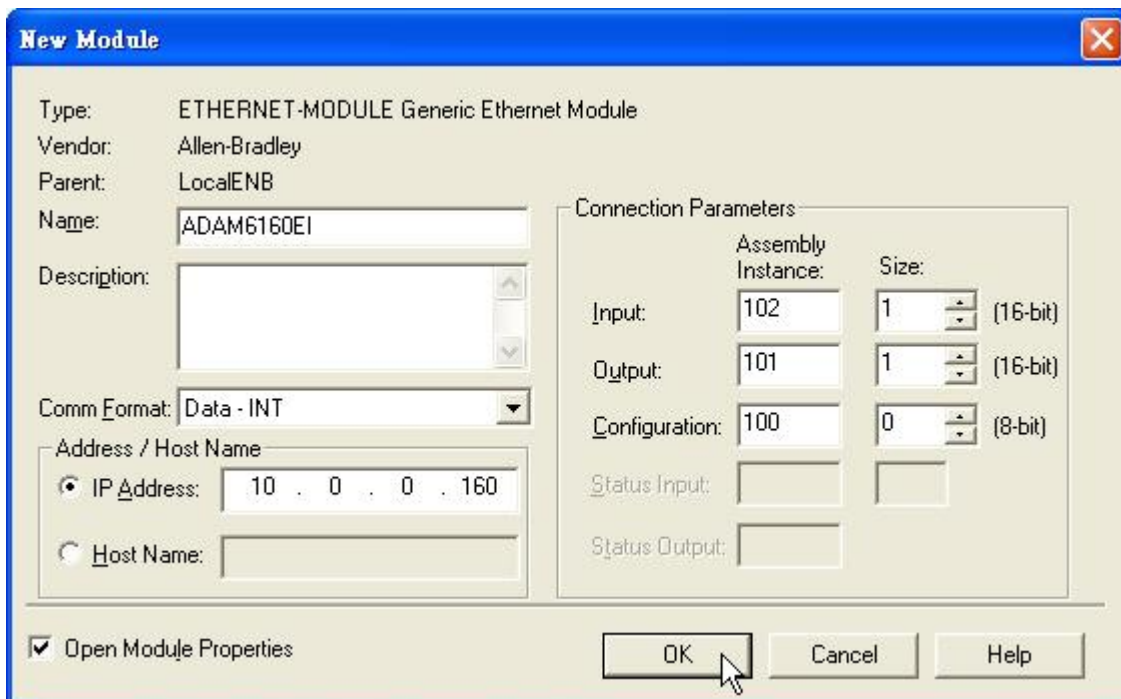


17. Choose [Communications \ ETHERNET-MODULE] and click [OK]

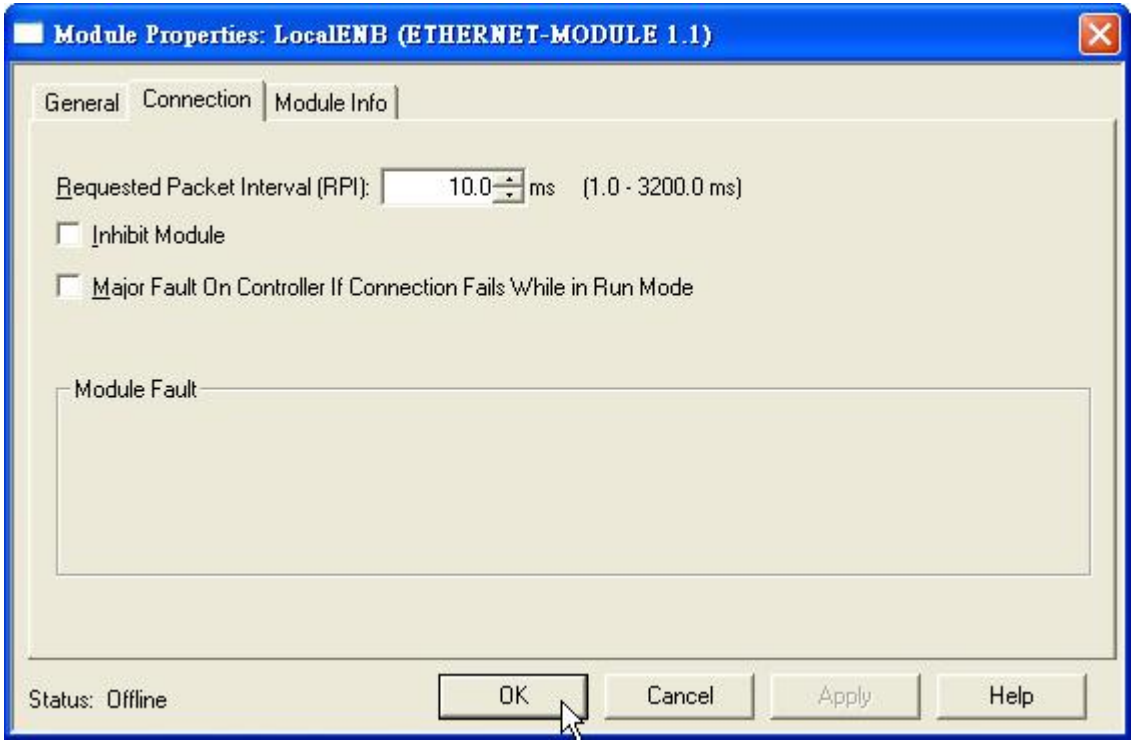




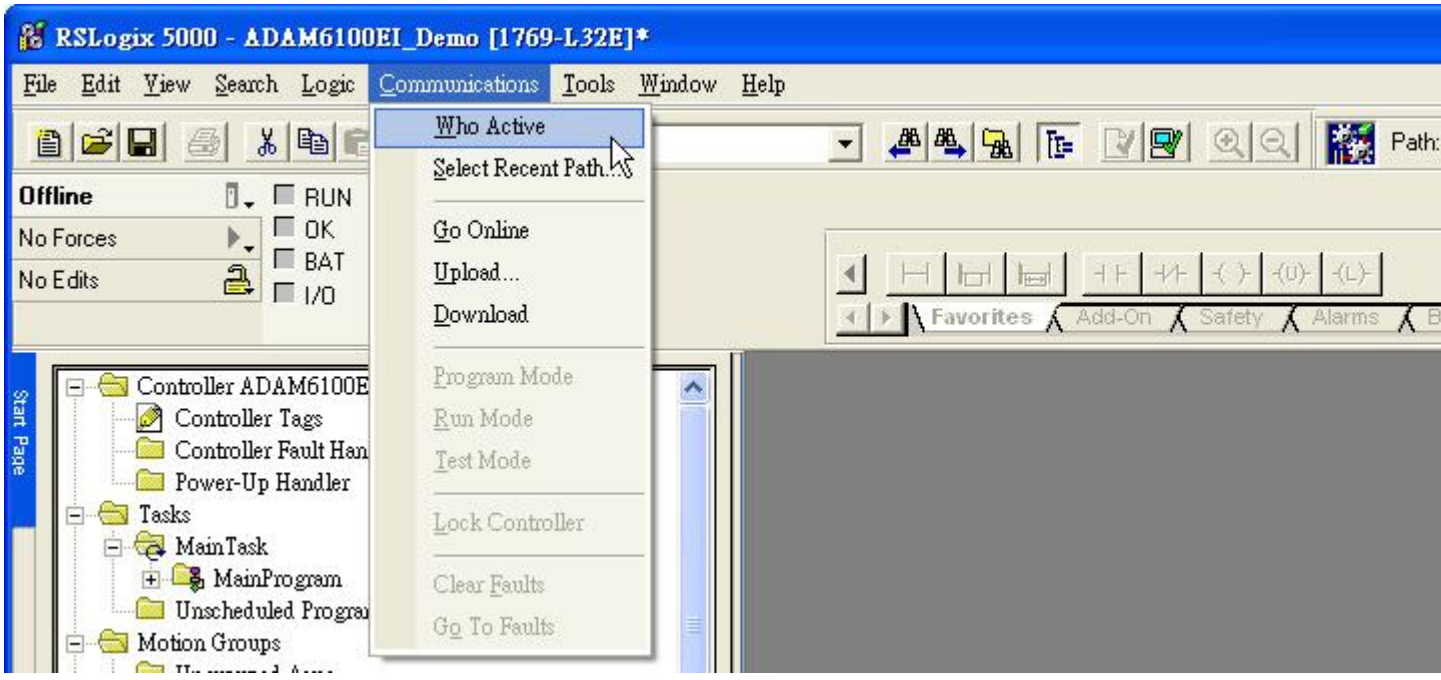
18. Give module a name. Here use ADAM-6160EI as example. Fill in the [Comm Format], [IP Address], and [Connection Parameters]. Click [OK]



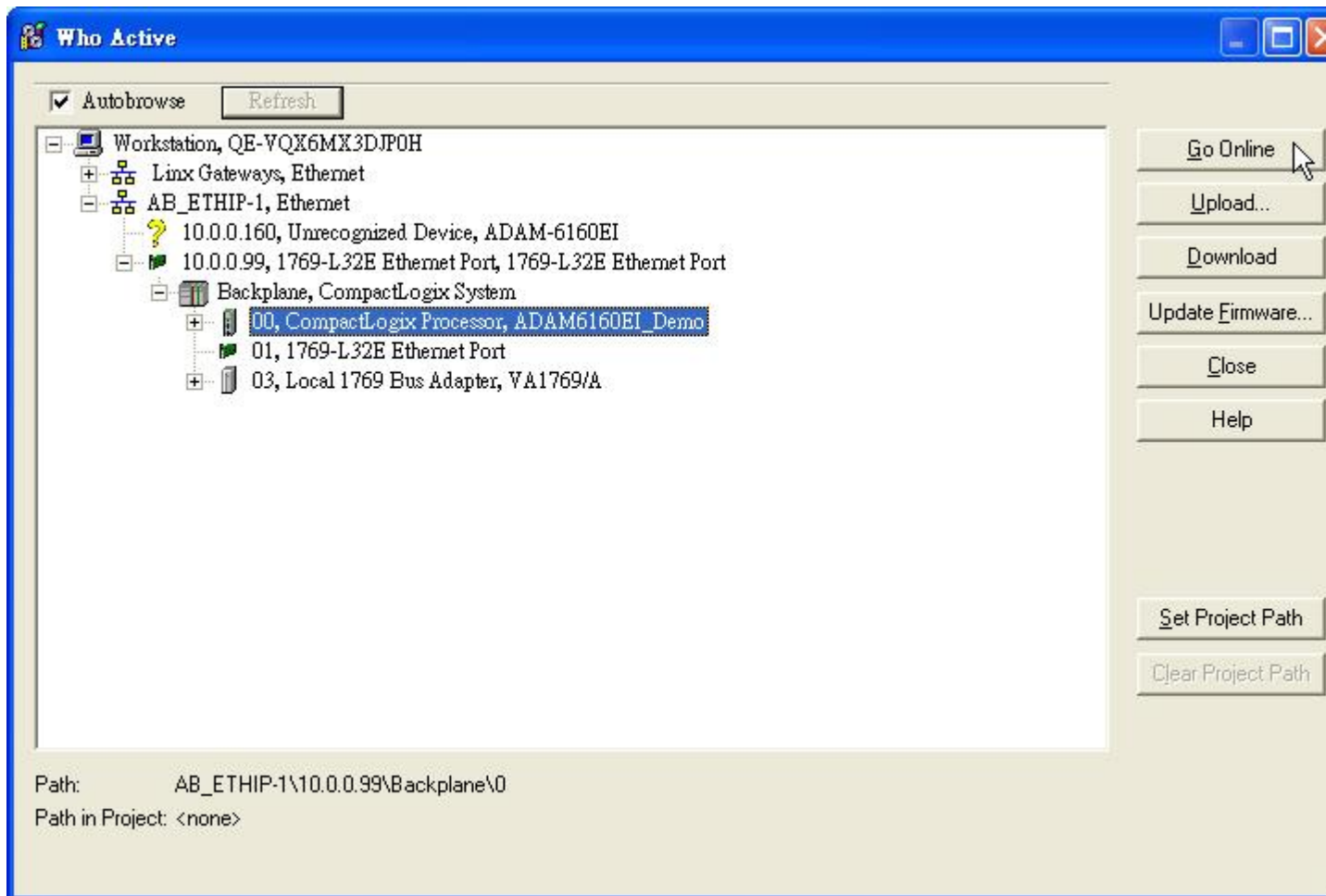
19. Setting [Connection] and click [OK]



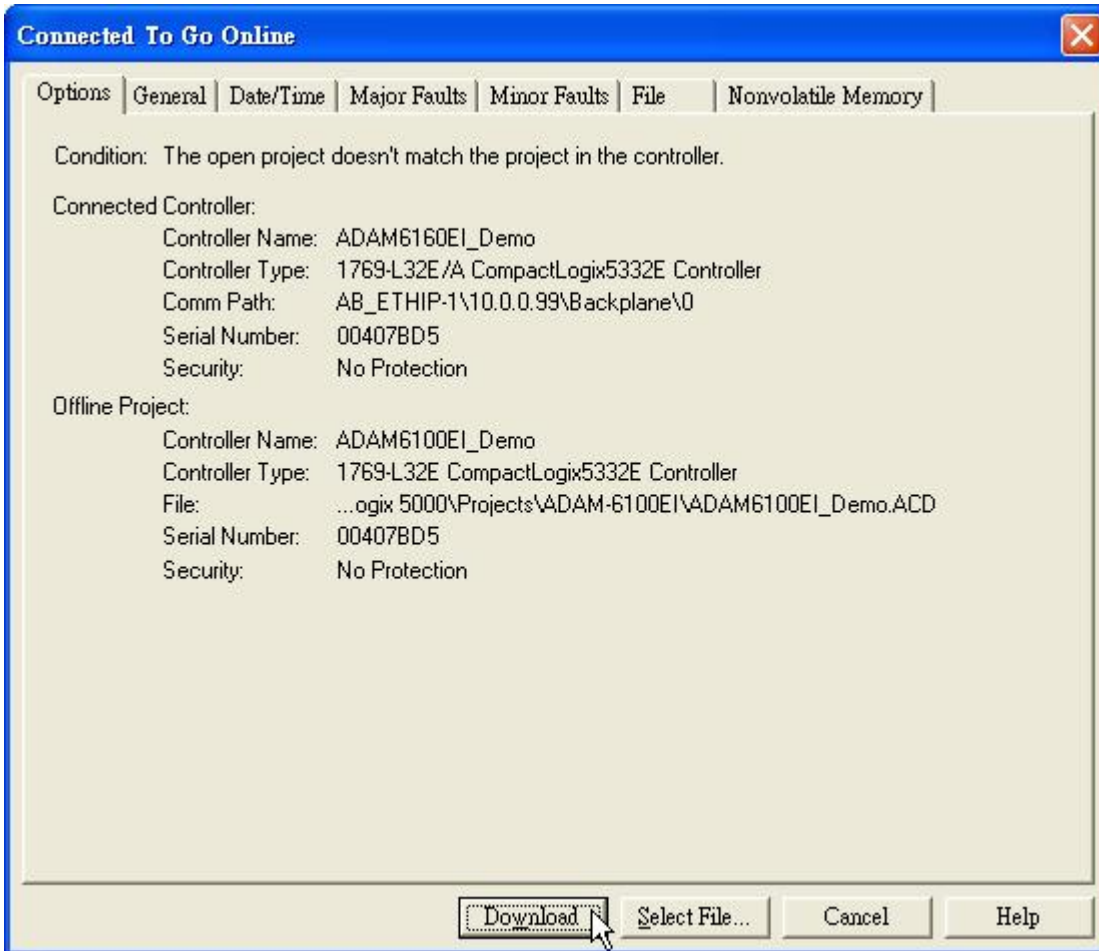
20. Click [Communication \ Who Active]



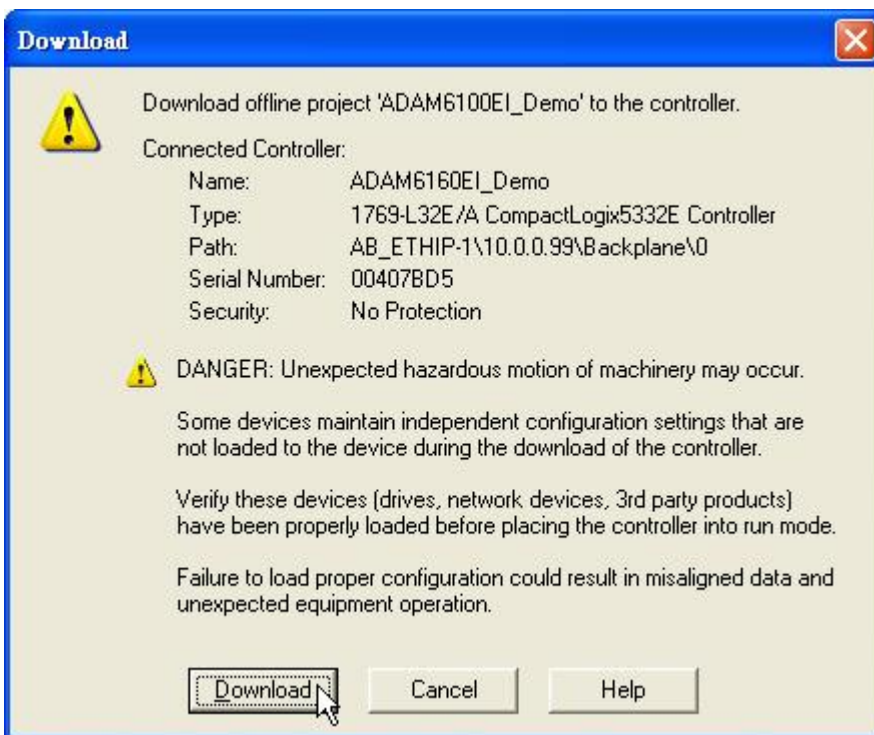
21. Choose the Processor and click [Go Online]



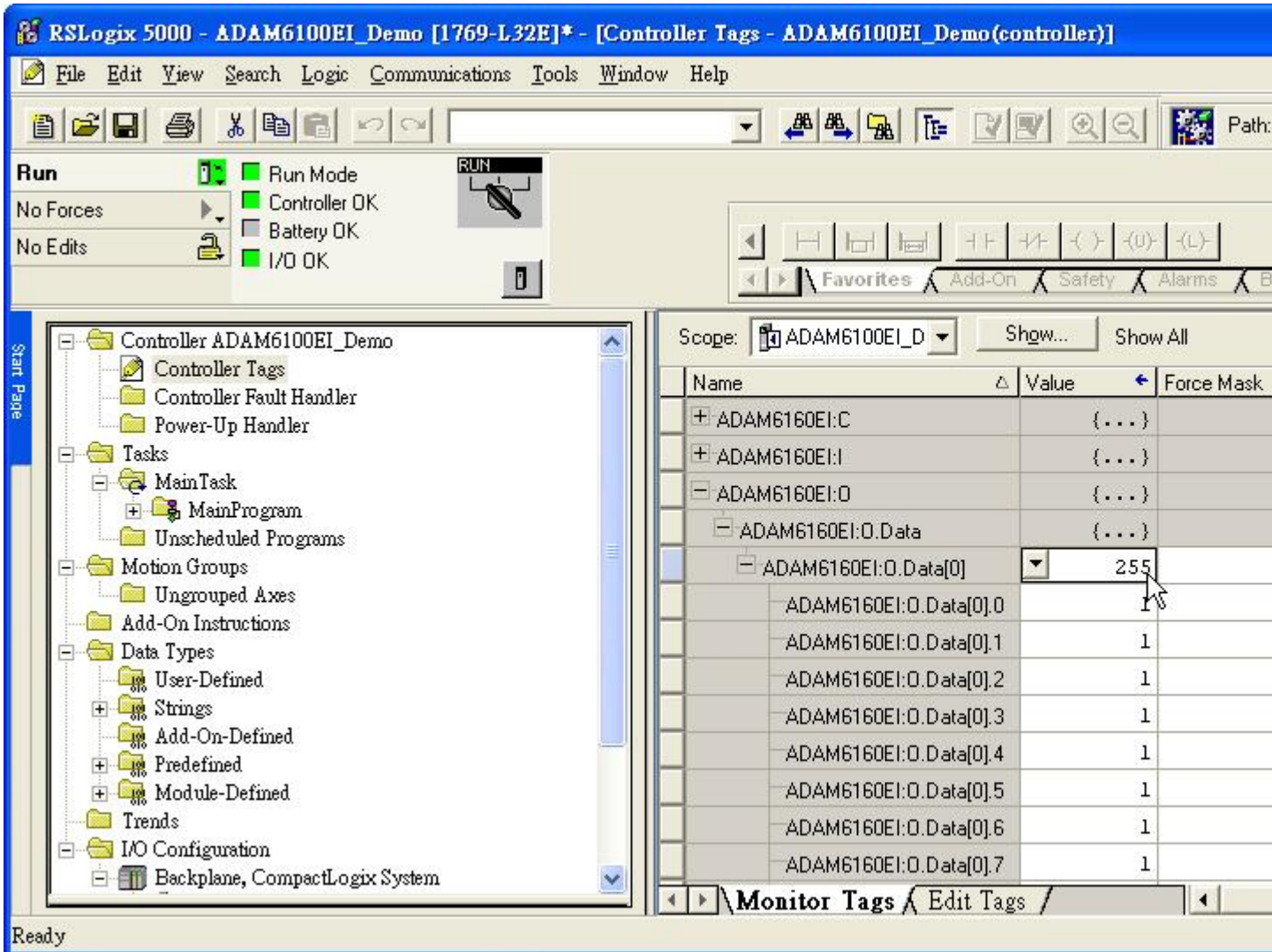
22. Click [Download]



23. Click [Download]

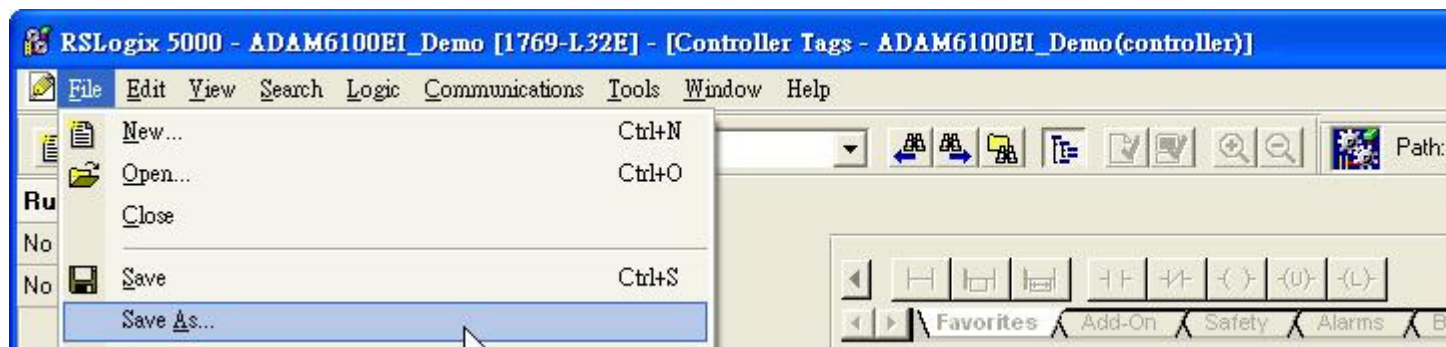


24. Switch PLC to [RUN] and change ADAM-6100EI module to [Normal] mode
25. Click [Controller Tags] to monitor the state of module
26. Give the value [255] to [ADAM6160EI:O.Data[0]] to on all the outputs

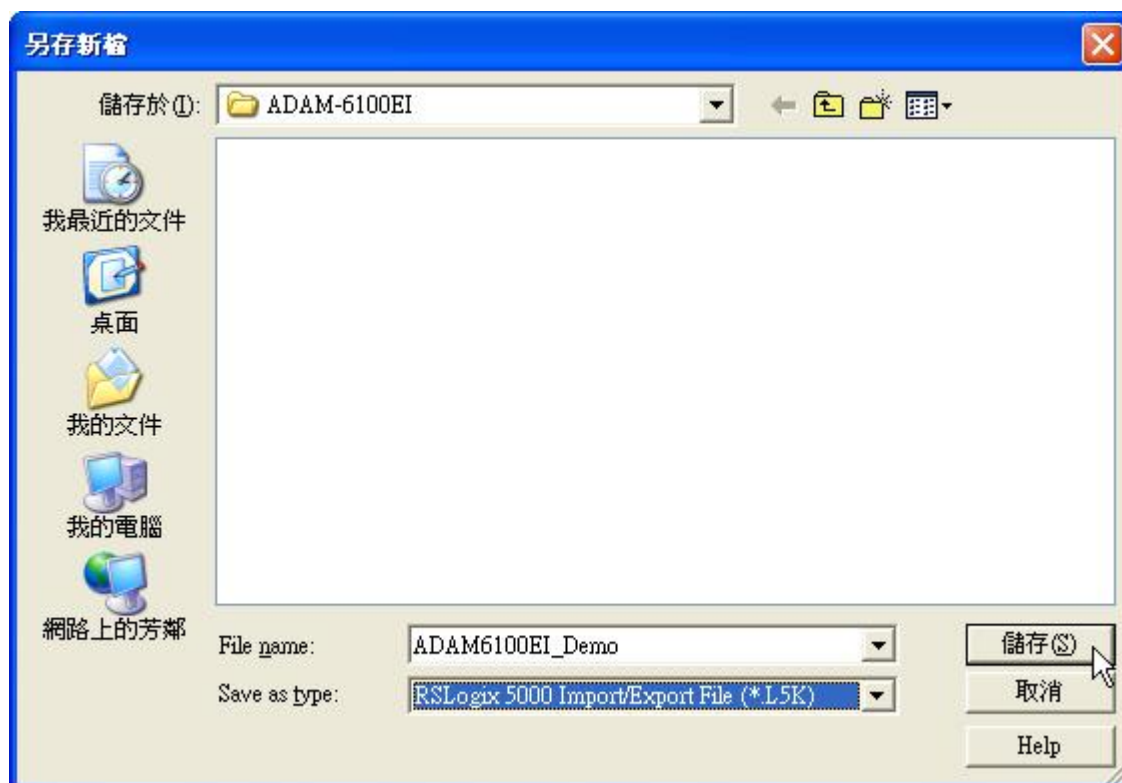


Add ADAM-6100EI Module by Utility

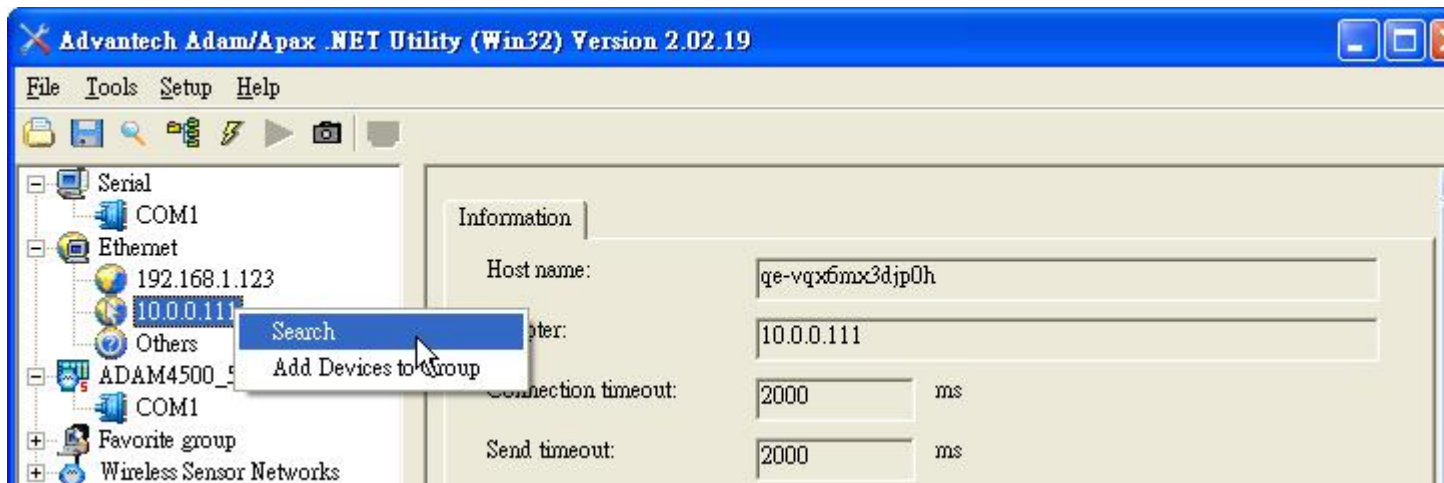
12. Click [File \ Save As...]



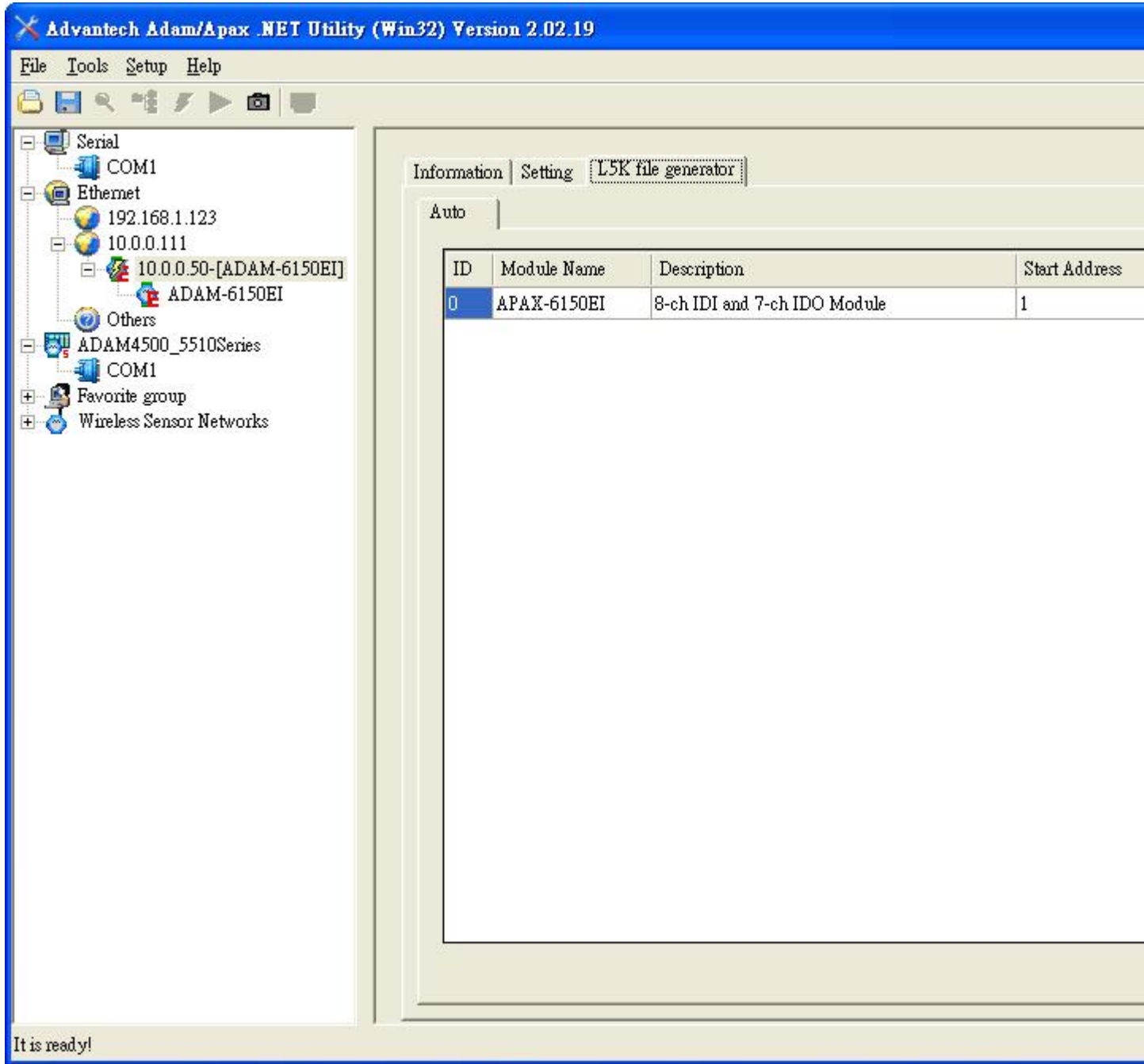
13. Save file as type [*L5K] and click [Save]



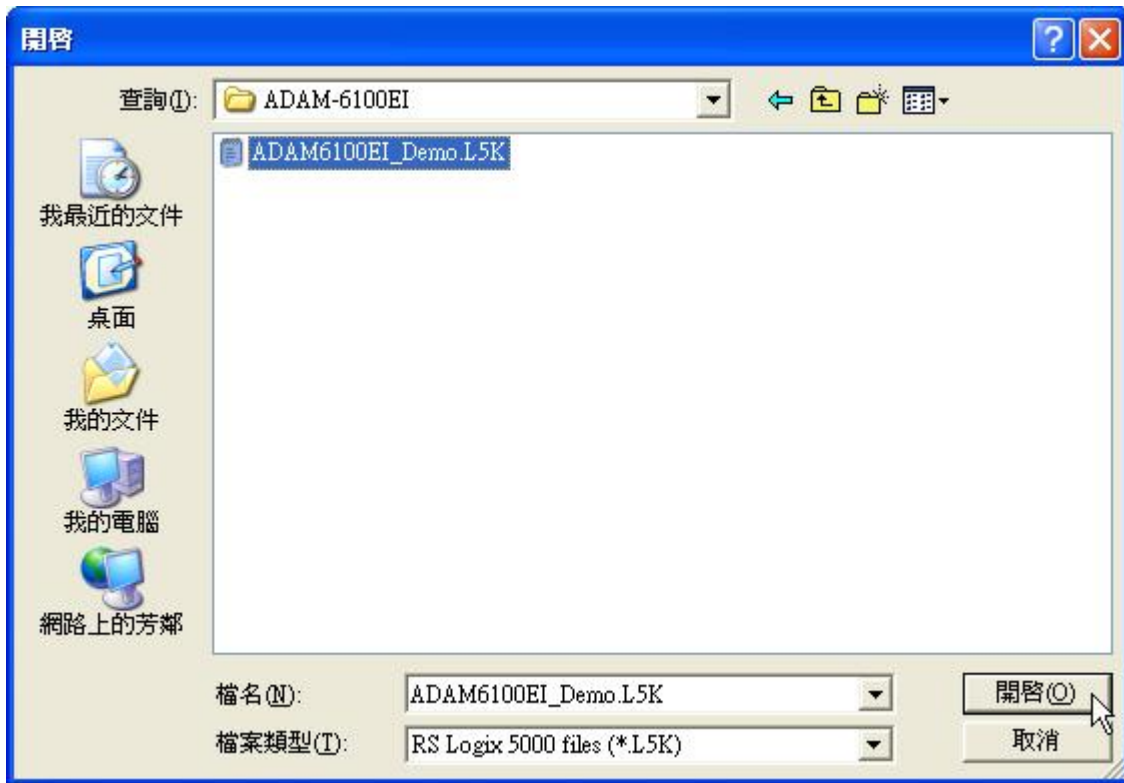
14. Switch ADAM-6100EI module to [Init] mode
15. Open Adam/Apax .NET Utility and search the module



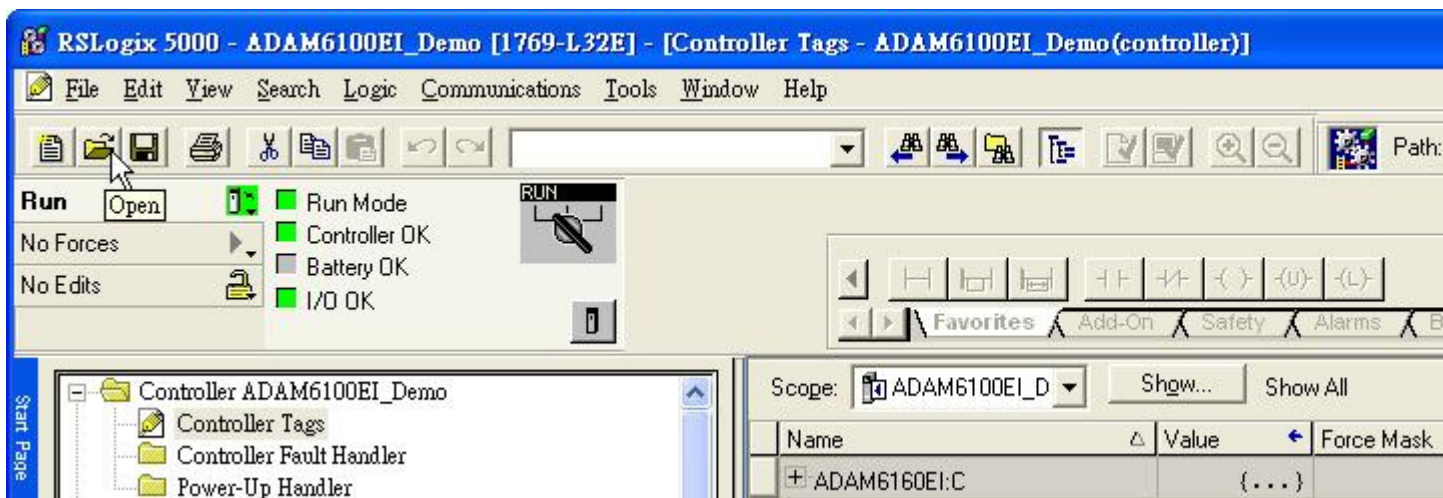
16. Click [Generate] button under [L5K file generator] tab



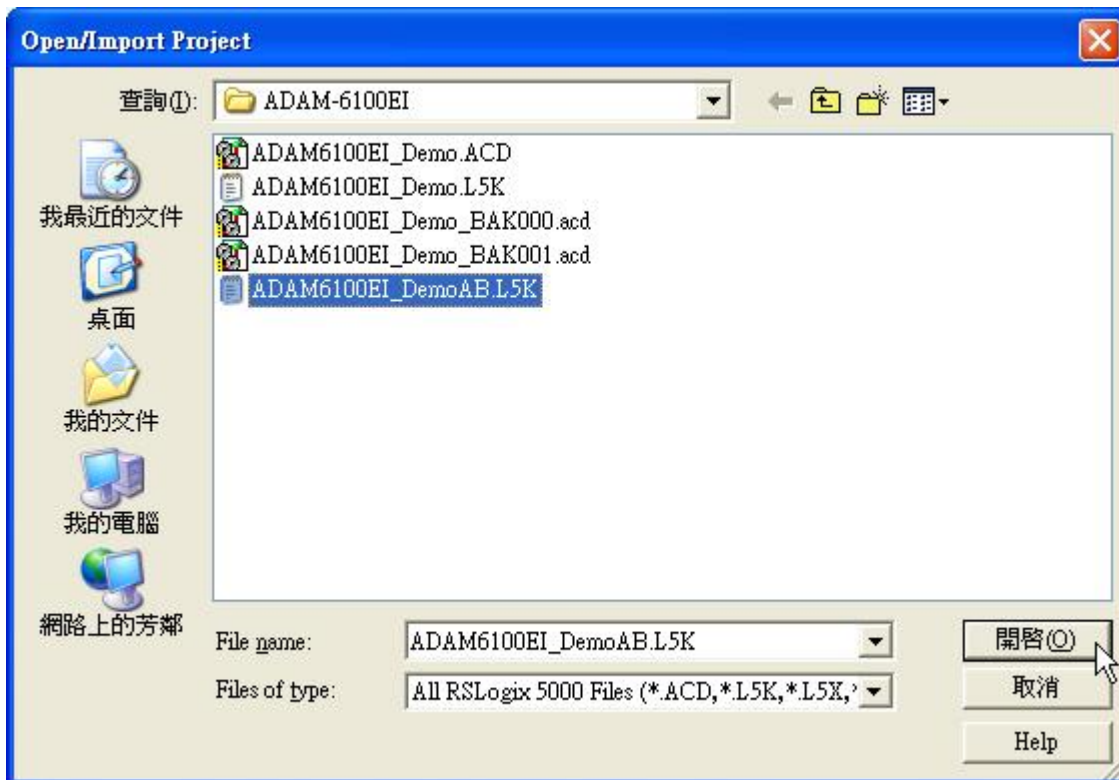
- Open the [*L5K] file that have just been saved, and click [OK] to finish. Remember to switch the module back to [Normal] mode



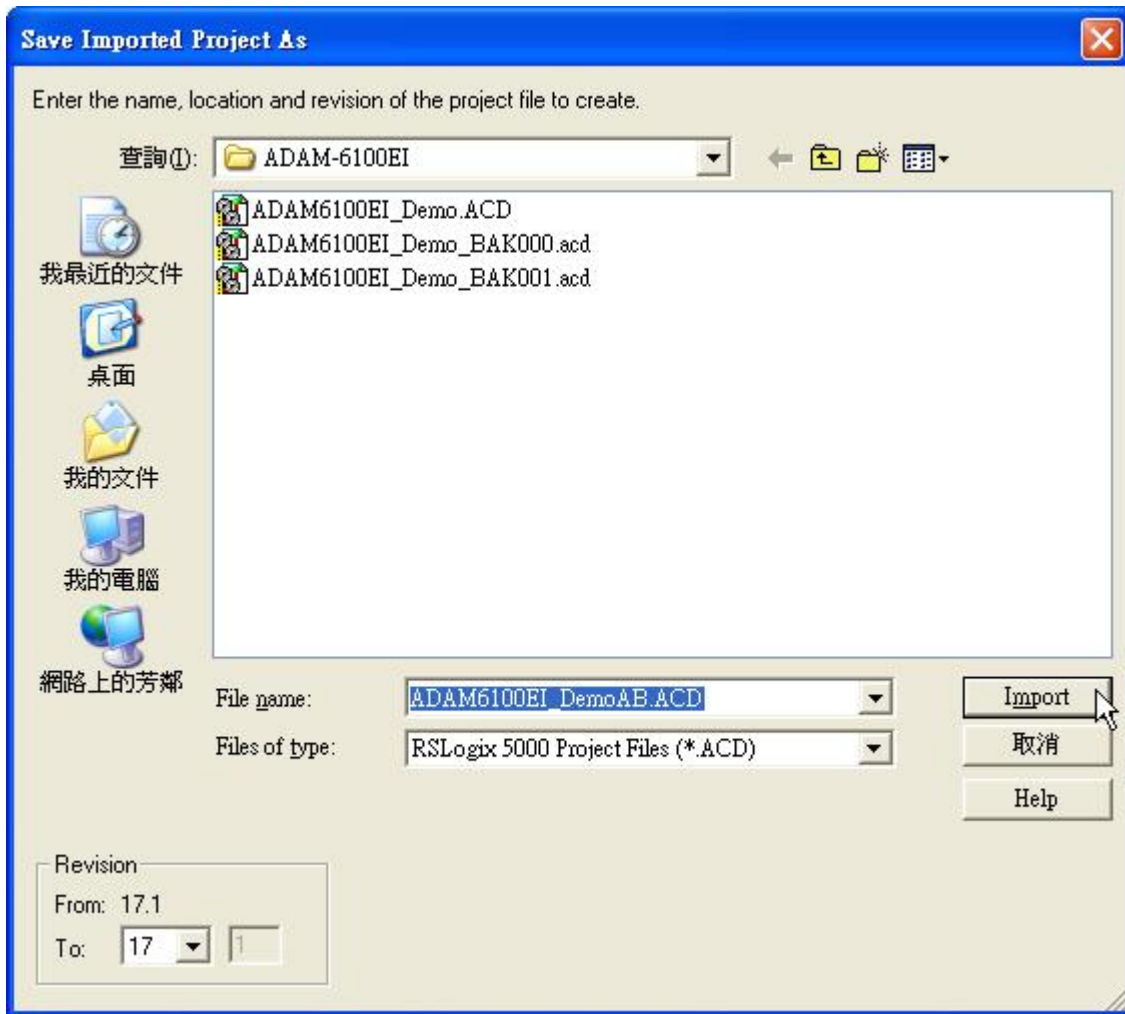
- Click [Open] button in RSLogix 5000



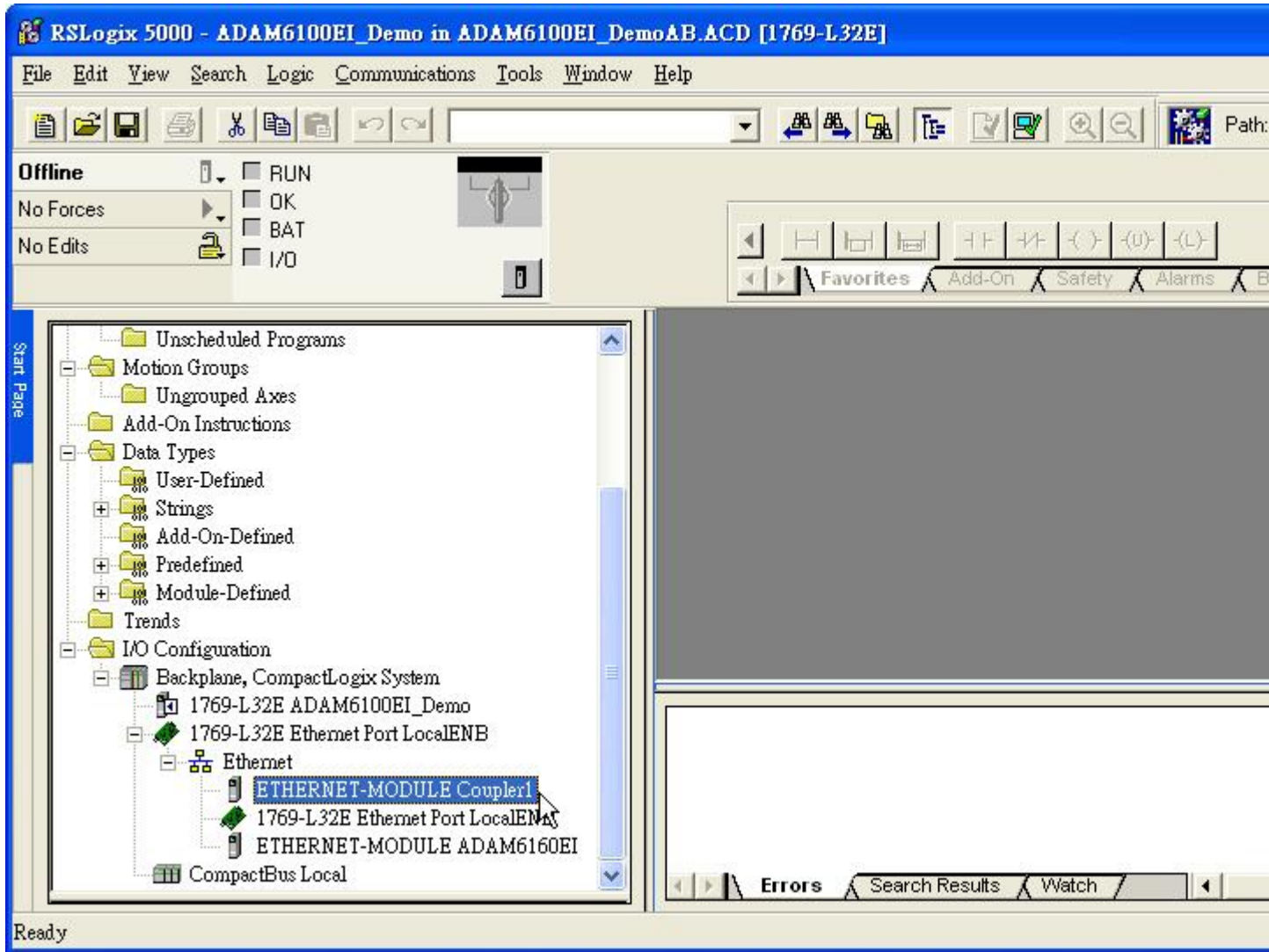
19. Select the [*AB.L5K] file that have been add the word “AB” and click [Open]



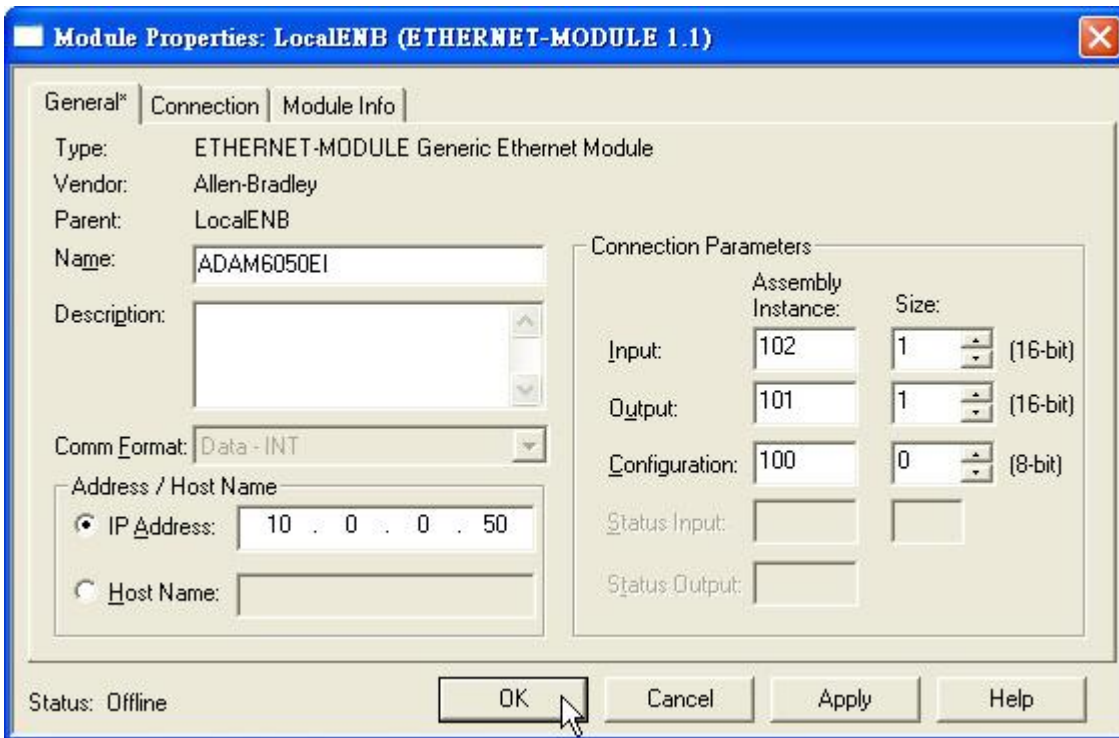
20. Click [Import] to save the imported file



21. The module have been added and named as coupler double click the module to edit



22. [Comm Format], [IP Address], and [Connection Parameters] have been set automatically, user can rename the module as following figure



Written by Alan.Chien, ADAM Product AE, 2012/1/13