

1. Use Uaexpert to connect to OPCUA Server to check if the OPCUA server is running.
2. Edgeline OPCUA master configuration.
 - 1) Add a OPCUA device

The screenshot displays the configuration interface for adding an OPCUA device. It is divided into two main sections: 'General Information' and 'TCP/IP'. In the 'General Information' section, the 'Enable' checkbox is checked. The 'Name' field contains 'NewDevice'. The 'Device Type' dropdown is set to 'OPC UA'. The 'Device Model' dropdown is set to 'Double Click to Select Device Template'. The 'Unit Number' field contains '1'. The 'Tag Write Type' dropdown is set to 'Single Write'. The 'Description' field is empty. The 'Add device name as prefix to IO tags' checkbox is checked. A 'Bulk Copy' button is visible. In the 'TCP/IP' section, the 'IP Address' field contains '11.0.0.32' and the 'Port Number' field contains '4840'. Red boxes highlight the 'Device Type', 'Unit Number', 'IP Address', and 'Port Number' fields.

Device Type: OPCUA

Unit Number: Different from other devices in one interface is ok.

IP Address and Port Number: OPCUA server's IP and Port.

The screenshot displays the 'Extention Properties' configuration interface. It includes several settings: 'Use URL as Connection Address' (checkbox), 'Security Policy - Message Security Mode' (dropdown set to 'None - None'), 'Authentication Settings' (dropdown set to 'Anonymous'), 'Username' (text field), 'Password' (text field), 'Select Certificate' (dropdown set to 'Default Certificate File'), 'Select Private Key' (dropdown set to 'Default Private Key File'), and 'Cyclic rate of subscribing data changes (ms)' (checkbox) with a value of '1000'.

Use URL as Connection Address: If OPCUA server must be connected by its URL, you can choose this.

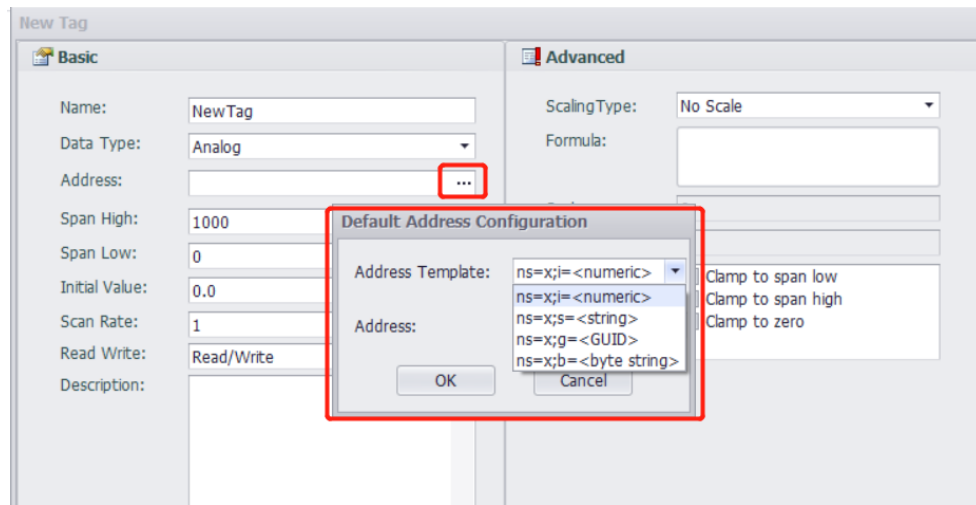
Security Policy and Authentication Setting: Follow the OPCUA server.

Certificate and Private Key: We have self authentication files by default. If customer needs to use the special file, they can choose in here.

Cyclic rate of subscribing data changes: By default, the mode of our opcu master is

Asking-Answer. If choosing this, the mode we use will be: We send a message to OPCUA server to tell it to check itself by cycle if there is some data changed. When some data changing, server will tell us, we don't need to ask server any more.

2) Add tags.

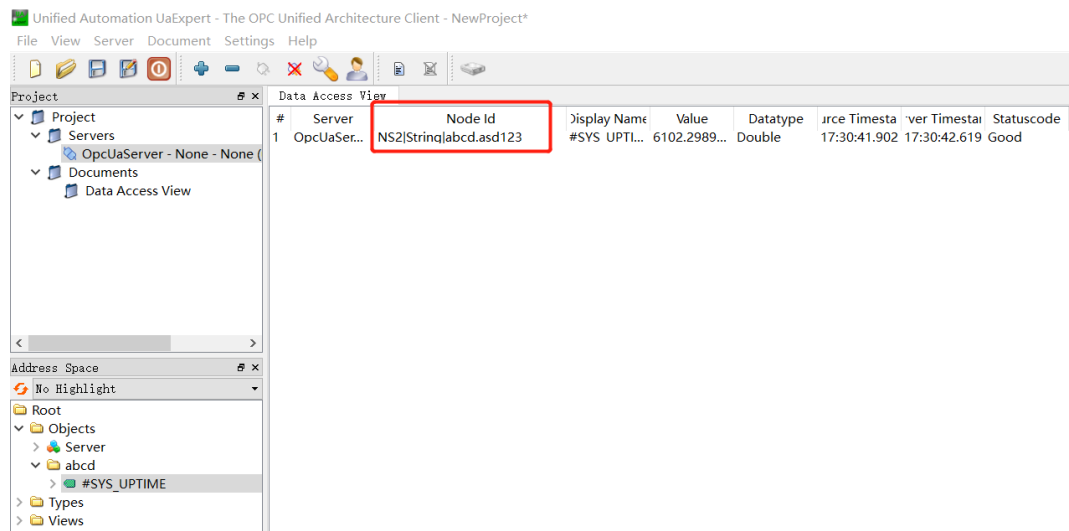


The address grammar is : ns=<Namespace Index>;<type>=<value>

Examples

Address Type	Namespace Index	Example
Numeric	2	ns=2;i=1234
String	2	ns=2;s=Device.System_Tag.#SYS_TIME_SECOND
GUID	0	ns=0;g={8ACE8827-ECC3-4c9a-8032-CA1E9957A8E8}
Opaque	2	ns=2;b=M/RbKBsRVkePCePcx24oRA==

We can see the address by Uaexpert.



In this example, we can see "ns=2", type is string, value is "abcd.asd123". So the address in edgelinek should be "ns=2;s=abcd.asd123"

Basic

Name:

Data Type:

Address:

Span High:

Span Low:

Initial Value:

Scan Rate:

Read Write:

Description:

Advanced

ScalingType:

Formula:

Scale:

Offset:

Clamp: Clamp to span low
 Clamp to span high
 Clamp to zero

3) Download the project. We can see the result in online monitor.

ECU-1251-R10

Tags

System Information

Configuration

System Tag **IO Tag** User Tag Calculation Tag

IO Tag

Tag Name Tag Value

Tag	Value	Quality	Timestamp
NewDevice:NewTag	6425.75	Good	2019-11-27T09:36:06 (UTC)

Showing 1 to 1 of 1 rows