

TPC-651H/1251H

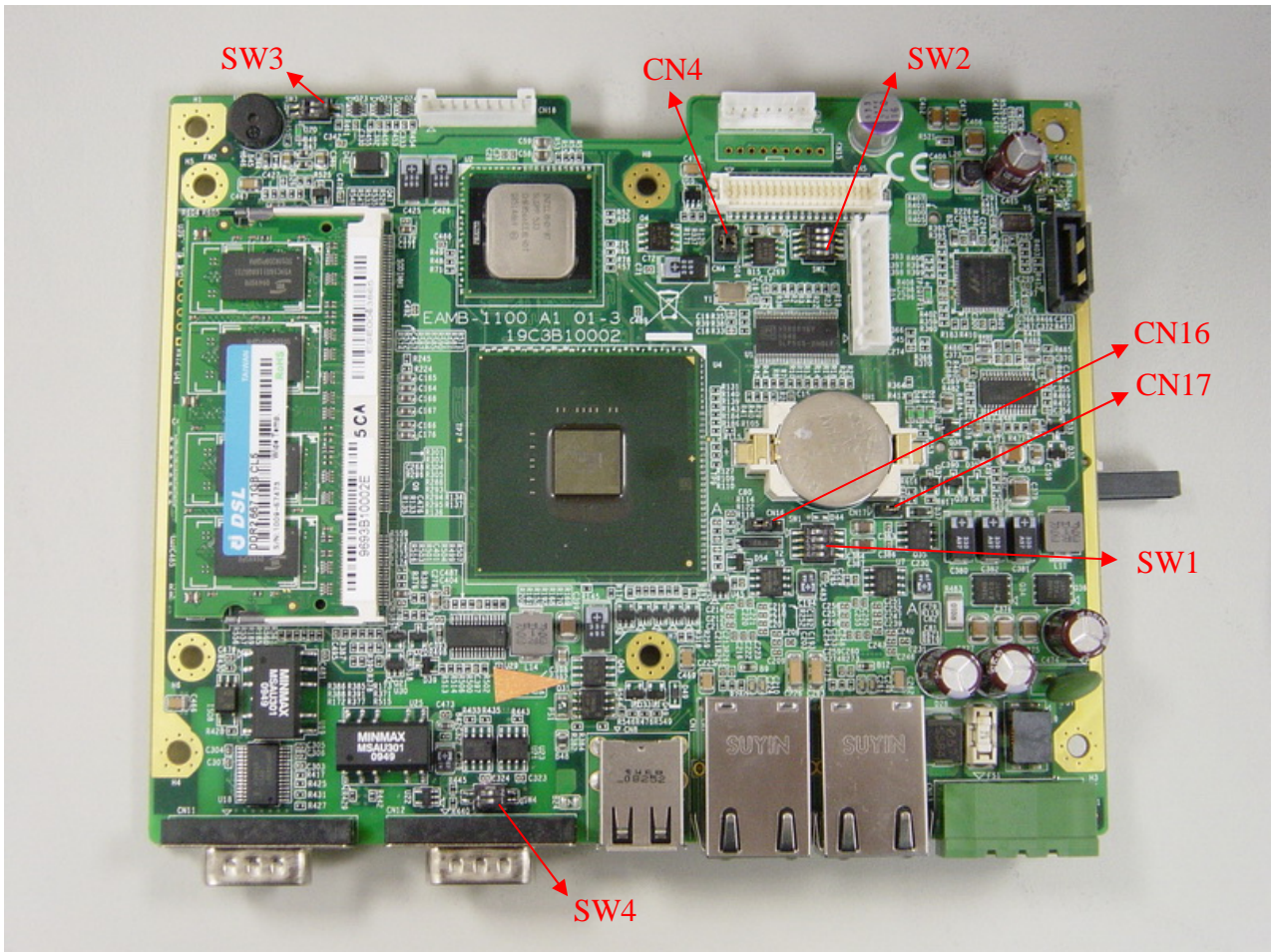
Jumper Setting & Connector List

Content

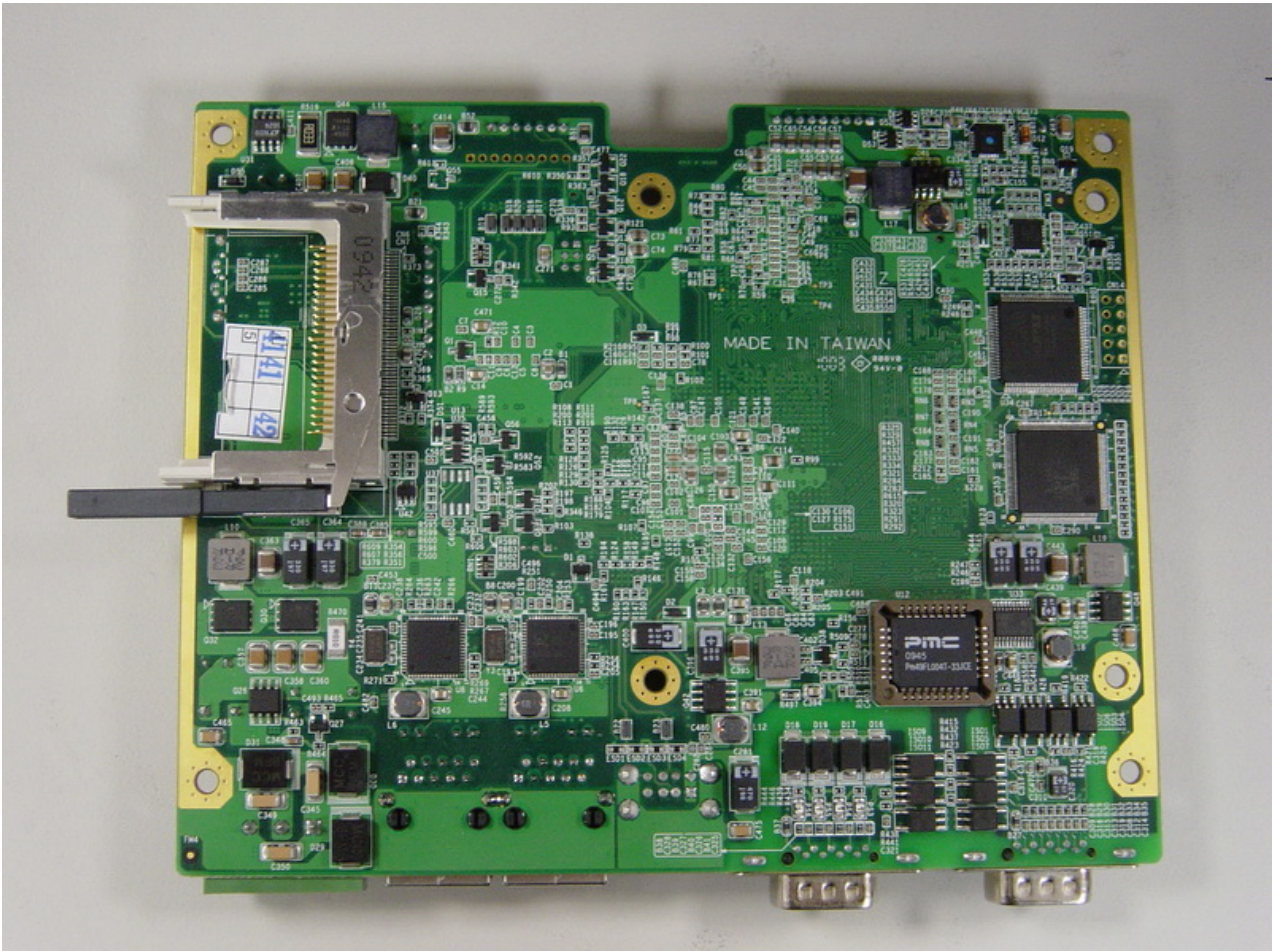
Content	2
Chapter 1. Component construction	3
1.1 M/B Top side	3
1.2 M/B Bottom side	4
Chapter 2. Jumper Setting	6
2.1 LCD Power Select (CN4)	6
2.2 CMOS Clear Select (CN16)	7
2.3 AT Mode Select (CN17)	8
Chapter 3. DIP Switch	9
3.1 LCD Resolution Select (SW1)	9
3.2 LCD Controlled Function (SW2)	10
3.3 TS type setting (SW3)	11
3.4 Termination Resistor Select (SW4)	12

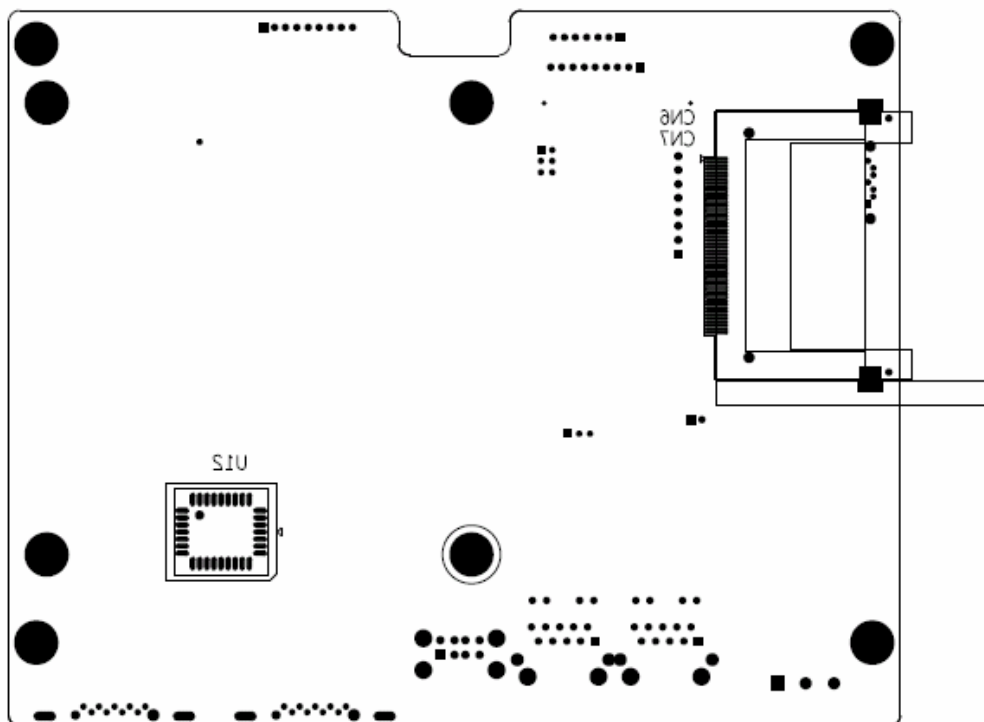
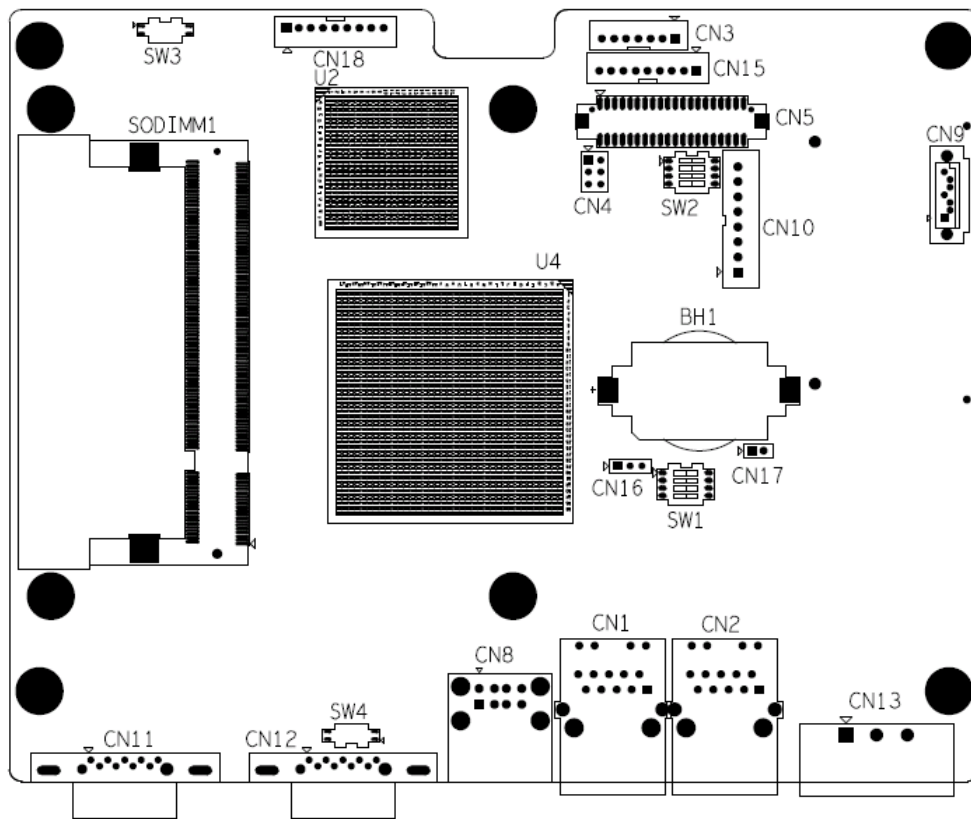
Chapter 1. Component construction

1.1 M/B Top side



1.2 M/B Bottom side

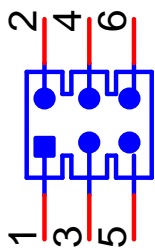




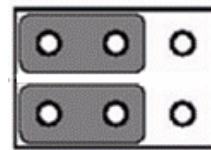
Chapter 2. Jumper Setting

2.1 LCD Power Select (CN4)

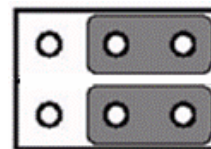
<i>J1</i>	<i>LCD Power Select</i>
Description	This jumper is used to select LCD Power is +3.3V or +5V
(1-3) & (2-4)	+5V
(3-5) & (4-6)	+3.3V (default)



CN4
PH_3x2V_2.00mm



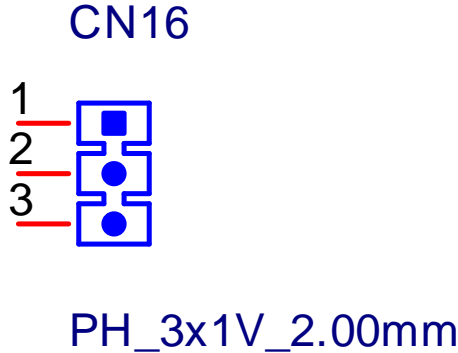
(1-3) & (2-4) +5V



(3-5) & (4-6) +3.3V

2.2 CMOS Clear Select (CN16)

J2	<i>CMOS Clear Select</i>
Description	This jumper is used to select CMOS Clear Enable/Disable
(2-3)	Enable (Clear CMOS)
(1-2)	Disable



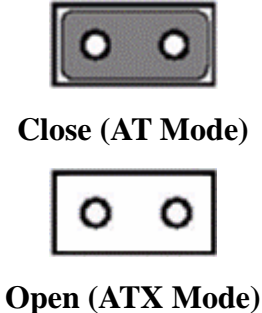
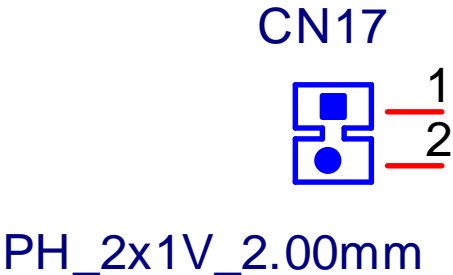
(1-2) Disable



(2-3) Enable (Clear CMOS)

2.3 AT Mode Select (CN17)

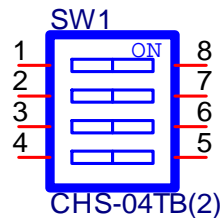
J3	<i>AT Mode Select</i>
Description	This jumper is used to select AT Mode
Close	AT Mode (default)
Open	ATX Mode



Chapter 3. DIP Switch

3.1 LCD Resolution Select (SW1)

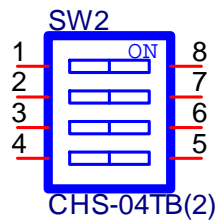
<i>SW1</i>	<i>LCD Resolution Select</i>	
Description	This switch is used to select LCD Resolution	
Default	800*600 (24 bit) PWM 20kHz (TPC-1251) 640*480 (12bit) PWM 20kHz (TPC-651)	
GPI_LCDSEL0	OFF (Pin 1)	ON (Pin 8)
GPI_LCDSEL1	OFF (Pin 2)	ON (Pin 7)
GPI_LCDSEL2	OFF (Pin 3)	ON (Pin 6)
GPI_LCDSEL3	OFF (Pin 4)	ON (Pin 5)



Connect to GOI pin	640*480 (24bit) PWM 20kHz	800*600 (24bit) PWM 20kHz	1020*768 (24bit) PWM 20kHz	640*480 (18bit) PWM 20kHz	800*600 (18bit) PWM 20kHz	1024*768 (18bit) PWM 20kHz
GPI_LCDSEL0	ON	OFF	ON	OFF	ON	OFF
GPI_LCDSEL1	ON	ON	OFF	OFF	ON	ON
GPI_LCDSEL2	ON	ON	ON	ON	OFF	OFF
GPI_LCDSEL3	ON	ON	ON	ON	ON	ON
State						

3.2 LCD Controlled Function (SW2)

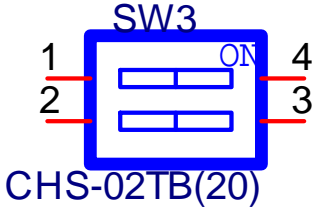
SW2	<i>LCD Controlled Function</i>		
Description	This switch is used to select LCD Controlled Function		
Default	By LCD Specification		
LVDS_V_CFG	Left and Right opposite	OFF (Pin 1)	ON (Pin 8)
LVDS_H_CFG	Up and Down opposite	OFF (Pin 2)	ON (Pin 7)
LVDS_SC_CFG	Scan direction control	OFF (Pin 3)	ON (Pin 6)
LVDS_MODE_CFG	Select 6 or 8 bits LVDS input	OFF (Pin 4)	ON (Pin 5)



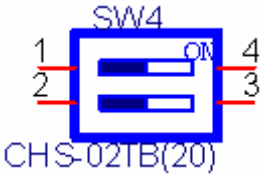
	TPC-1251		TPC-651	
	Default	State	Default	State
LVDS_V_CFG	OFF		OFF	
LVDS_H_CFG	OFF		OFF	
LVDS_SC_CFG	ON		OFF	
LVDS_MODE_CFG	OFF		OFF	

3.3 TS type setting (SW3)

SW3	<i>TS type setting</i>	
Description	This switch is used to select TS type setting	
Default	SENSE off & C2D_BR off	
SENSE	ON (Pin 4)	4,8 WIRE
	OFF (Pin 1)	5 WIRE
C2D_BR	ON (Pin 3)	Baud rate 9600
	OFF (Pin 2)	Baud rate 19200



3.4 Termination Resistor Select (SW4)

SW4	<i>Termination Resistor Select</i>	
Description	This switch is used to select Termination Resistor (120 ohm) for long distance transmission or device matching.	
Default	Bit1 off & Bit2 off (ISO_COM2_DATA+ & ISO_COM2_RX-)	
ISO_COM2_DATA+	Pin 1	 <p style="text-align: center; color: red;">Default</p>
ISO_COM2_RX-	Pin 2	
ISO_COM2_R_RX+	Pin 3	
ISO_COM2_R_DATA-	Pin 4	

