

Chapter 1

Overview

Thank you for choosing the msignage™ WS15, an excellent industrial computer system.

Based on the **Intel® 945GSE and ICH7M** chipset for optimal system efficiency, the msignage™ WS15 accommodates the **Intel® Atom™ N270** processor and supports one DDR2 400/533 SO-DIMM slot to provide the maximum of 1GB memory capacity.

SYSTEM SPECIFICATIONS

Processor

- Intel® Atom™ processor N270
- Front Side Bus (FSB) 533 MHz
- Thermal Design Power (TDP) 2.5 W
- Highest Frequency Mode (HFM) 1.6 GHz
- Lowest Frequency Mode (LFM) 800 MHz

Chipset

- North Bridge: Intel® 945GSE chipset
- South Bridge: Intel® ICH7M chipset

Display

- Intel® GMA 950 chipset
- Resolution is up to QXGA (2048 x 1536)

Memory

- Supports DDR2 400/ 533 SDRAM (200-Pin/ 1.8 V)
- 1 DDR2 SO-DIMM slot (1 GB Max) (Non-ECC)

Audio

- Chip integrated by Realtek® ALC888S
- HD audio Codec with auto jack sensing

LAN

- Supports 10/100 Fast Ethernet by Realtek® RTL8102E
- Compliant with PCI 2.3
- Supports ACPI Power Management

Input/ Output (I/O)

- 3 USB 2.0 ports
- 1 Headphone / speaker connector (3.5mm)
- 1 Mic connector (3.5mm)
- 1 VGA connector
- 1 RJ-45 LAN jack (by Realtek RTL8185E)
- 1 3-in-1 card reader (SD/MMC/MS)
- 1 DC jack
- 1 SMA connector for WLAN antenna

Power Supply

- 40 Watt Power Adapter with Active PFC
- Input: 100-240V~, 50-60Hz 1.7A
- Output: 20V, 2.0A

Form Factor

- 260 mm (W) X 180 mm (D) X 19 mm (H)
- 1.08 Kg

Operation Environment

- Temperature: 0°C ~ 35°C
- Humidity: 5% ~ 90% (non condensing)

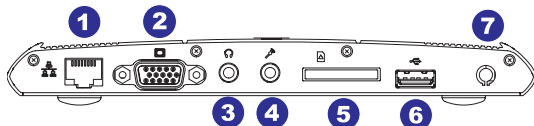
Storage Environment

- Temperature: -20°C ~ 80°C
- Humidity: 5% ~ 90% (non condensing)

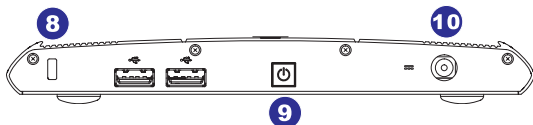
OVERVIEW

SYSTEM OUTLOOKS

Right Side View



Left Side View



1 RJ-45 Connector

The connector is used to connect a LAN cable for network connection.

2 VGA Port

The 15-pin-D-sub VGA port allows you to connect an external monitor or other standard VGA-compatible device (such as a projector) for a great view of the computer display.

3 Headphone

Used for speakers or headphones.

4 Microphone

Used for an external microphone.

5 Card Reader

The built-in card reader may support various types of memory card, such as MMC (Multi-Media Card), SD (Secure Digital), MS (Memory Stick) or cards.

6 USB Port

The USB 2.0 port allows you to connect USB-interface peripheral devices, such as the mouse, keyboard, modem, portable hard disk module, printer and more.

7 Antenna Connector

The connector allows you to connect an external antenna for wireless LAN.

8 Kensington Lock

This system provides a Kensington Lock hole, which allows users to secure the system in place with a key or some mechanical PIN device and attached through a rubberised metal cable. The end of the cable has a small loop which allows the whole cable to be looped around a permanent object, such as a heavy table or other similar equipment, thus securing the system in place.

9 Power Button

Press the power button to turn the system power ON and OFF.

10 Power Connector

Connect the adapter and supply power for the system.

OVERVIEW

PACKING CONTENTS



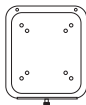
misgna™ WS15



Power Adapter



Power Cord



Back Mount Plate



Driver & Manual CD



WLAN Antenna

Chapter 2

System Assembly

This chapter provides you with the information on system assembly procedures. While doing the installation, be careful in holding the components and follow the installation procedures. For some components, if you install in the wrong orientation, the components will not work properly.

Use a grounded wrist strap before handling computer components. Static electricity may damage the components.





Important

ONLY FOR SERVICE PERSONNEL

Always unplug the power cord before inserting any add-on card or module.

SYSTEM ASSEMBLY

INSTALLATION TOOLS

	A Phillips (crosshead) screwdriver and a flathead screwdriver, can be used to do most of the installation. Choose one with a magnetic head would be better.
	Pliers, can be used as an auxiliary tool to connect some connectors or cables.
	Forceps, can be used to pick up tiny screws or set up the jumpers.
	Rubber gloves, can prevent yourself from being incised and suffering the static charge.

ASSEMBLY PROCEDURES

Important

- Choose the LCD less than 5.8 Kg for keeping the weight balance; otherwise, it may cause fall or related hazard.

Step 1:

Find the screw holes on the back of the LCD.



Step 2:

Use the corss-type screwdriver to fix the back mount plate with the attached screws.



SYSTEM ASSEMBLY

Step 3:

Hang the system on the back mount plate.



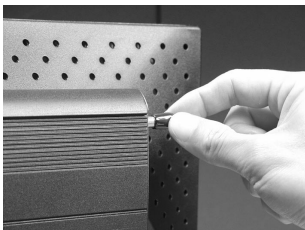
Step 4:

The screw on the bottom of the back mount plate can be used to fasten the system.



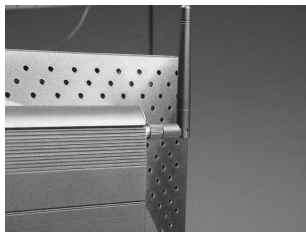
Step 5:

Remove the protector from the WLAN antenna connector.



Step 6:

Install the attached WLAN antenna.

**Step 7:**

Connect the VGA cable between the system and the LCD.

**Step 8:**

Connect the adaptor and peripherals to the system.



SYSTEM ASSEMBLY

Step 9:

Turn on the system and enjoy it.




Chapter 3

Software Setup

This chapter provides you with the information on software configurations. You can set the layout, resolution, multimedia or text bar as your desire. The schedule table allows you to control the precise channel playing.

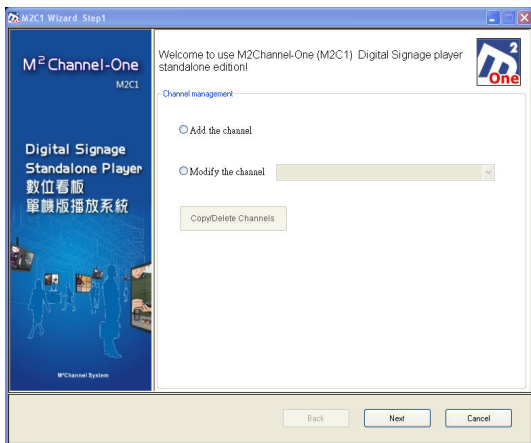
CHANNEL EDIT AND MANAGEMENT


Right click the  on the system tray, you will see the pop-up menu. Select "Edit" to enter the channel edit and management.

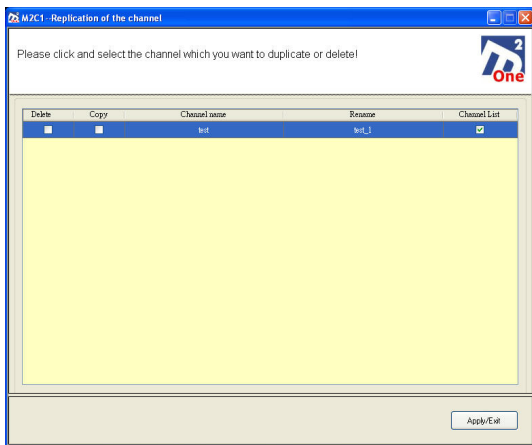
Edit	Ctrl+E
Channel	▶
Schedule	Ctrl+S
Option	Ctrl+O
About	Ctrl+A
Exit	Ctrl+Q

► Add the channel / Modify the channel / Delete / Copy Channels

After entering the channel edit, the window shows as below.



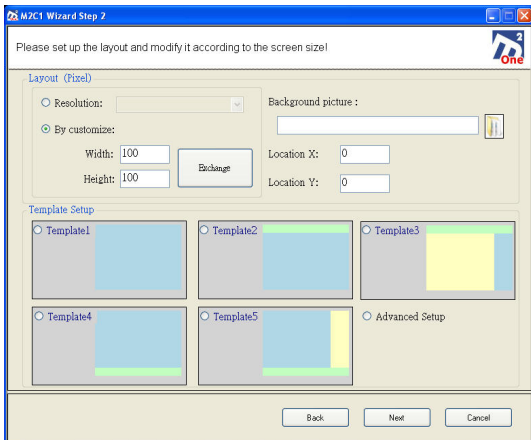
- Add the Channel: Check, the **Channel name :** shows up, you can fill a name for later identification and management.
- Modify the channel: Check  Modify the channel , there will be a pop-up menu which shows the existing channels. Select the channel that you want to modify and click .
- Delete/Copy Channels: Click to enter the setting window for deleting or copying a channel.



Check the “Delete” box and click to delete the channel. If you want to copy a channel, check the “Copy” box and click the “Rename” to rename the channel; furthermore, you can keep the “Channel List” box checked to copy the previous settings of layout, template and play list. Then click to copy the channel.



► Layout and Template

The Setup2 window shows as below:



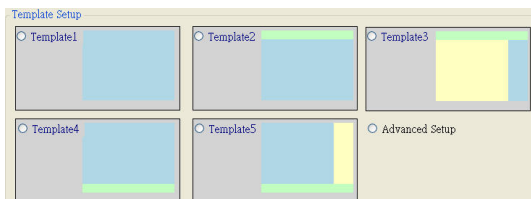
Layout

In the layout zone, you can choose the built-in resolution or set up according to your need. The unit is pixel.

- Resolution: The first item is your current monitor resolution or you can choose the built-in resolutions.
- By customize: You can define the layout size by inputting width and height as your desire. You can also click  "Exchange" to exchange the width and height. This function can also be used as extensive desktop, virtue desktop or multiple screen output.
- Background picture: Click  and select a JPEG/GIF/BMP picture as the channel background. You can input the value

of X and Y to place the background picture to a precise position. If you do not have more than two screen outputs, please keep the value 0.

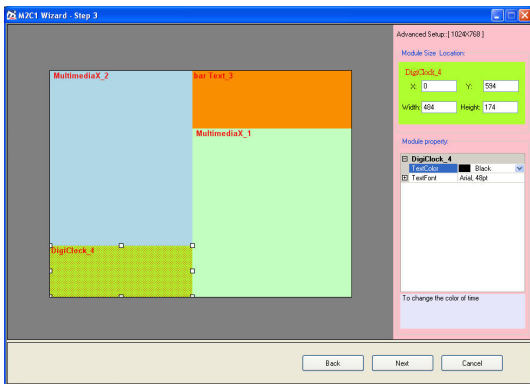
Template Setup



In the Template Setup, there are 5 basic templates for users to select. You can check ☒ **Advanced Setup** and click for advanced adjustment. In the basic templates, there are only Media Module and Bar Text Module. No matter which template you choose, you can fine-tune the details later, such as coordinates, size, property, and so on; otherwise, you can add more modules on your template for the maximum and flexible configuration.

► Advanced Setup

After the completion of the previous step, the following screen appears for advanced settings:



This window is divided into 3 regions, the left is “Template Layout”, the upper right is “Module Size Location”, and the lower right is “Module property”.

Template Layout

You can click the module in different colors, each comes 8 adjustable points allow you to move or drag the module so as to change the X and Y value of coordinate and the width and height value of the size. For more modules, you can right click the layout to add Media Module, Bar Text Module or Digitalclock Module, and then adjust the location and size as your desire.

- Media Module: Media Module can play dynamic video and still images. The number of Media Module depends on the hardware performance.
- Bar Text Module: Bar Text Module can play messages that clearly express messages to the people. The system will automatically transform messages into images to display, so the effect is better than that of the competitor's.

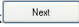
- Digitalclock Module: Digitalclock Module can show the time (HH:MM:SS) and you can change the color, size, background colors, and so on. If you set the second, it will show the jumping effect to the second.
- Delete Module: Select a module, right click and select Delete to delete it.
- Move up / Move down / Top Level / Back Level: These modules on the layout may overlap. You can right click a module to move it up or down.

Module Size Location

You can input the values to precisely define a module's position and size.

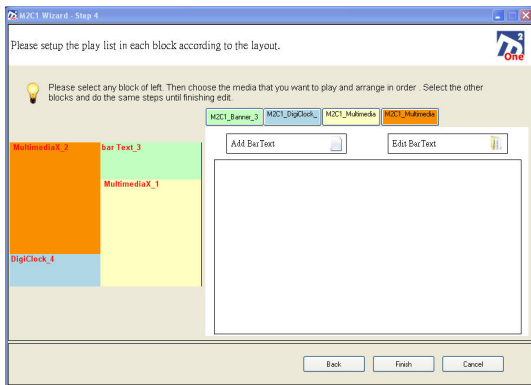
Module Property

Click a module on the Template Layout area, the module's attribute sheet will show. Each attribute sheet has detailed text description that explains its function or definition of the setting value.

Click , all the settings will be automatically saved, and then you can enter the next step.

► Channel Media Design

After the completion of the previous step, it will enter channel media design, the following window will appear:







This window is divided into 3 regions: "Modules Area" is on the left, "Media Setting" is on the upper right and "Media Schedule" is on the lower right.

Modules Area

You can click the module in different colors, and then the "Media Schedule" will show the detailed settings accordingly. While you click other modules, the changes will be saved to the previous module.

Media Setting

The selected module will show some corresponded buttons here, so you can click the buttons to set the module content.

- **Media Module:** There are three options    for you to set the content for the selected media module.
- **Bar Text Module:** Bar Text Module is designed for text input. You can click  to add a bar text. If there is an existed bar text in the list,

you could click the it and click  to modify the text. The following window will appear as below:



You can input text content in the screen then apply the effect by clicking these buttons.

 : Background color

 : Foreground color

 : Bold

 : Italic

 : Underline

 : Strikethrough

 : Font size

☐ Transparent : If checked, the background will be transparent.

Please click  after you finished design.

SOFTWARE SETUP

- Web Page Module: If you click  the below window for the website address input will appear . Right click and select Set Time to set the playing duration of the website. You can input more website address and set switch time.

Media Schedule

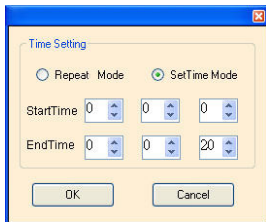
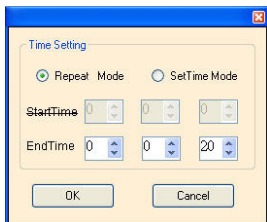
NO	PlayName	StartTime	EndTime	PlayMode
1	http://www.msi.com		00:00:20	Repeat .
2	http://www.pcho...		00:00:20	Repeat .
3	Winter.jpg		00:00:20	Repeat .

This area can arrange the order, time and play mode of materials according to user's demand. When you load the materials, there will be an item list in this area. Left click the first column and drag the item to adjust the play order of the material.

Otherwise, you may also right click the material and select Copy to copy it or Delete to remove it.

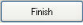
The End Time column shows the duration of the media. If you want to keep one material a little longer, you may right click and select Set Time to change the duration manually. If the material is a picture or bar text, the default duration is 20 seconds and you can also change the value in order to control the play time before the next material.

When you select Set Time, there will be a window for time setting for you to choose Repeat Mode or Set Time Mode.




Repeat Mode plays the list in order. The End Time on the window shows the length of the material and can be adjusted manually.

Set Time Mode allows you to set the start time of the material; thus the material will start at a certain time. You will not see the material which is set in Set Time Mode on the list of Repeat Mode except the start time is just in the range of playing time. In the Set Time Mode, when you try to change the Start Time, the End Time accumulates according to the length of the material.

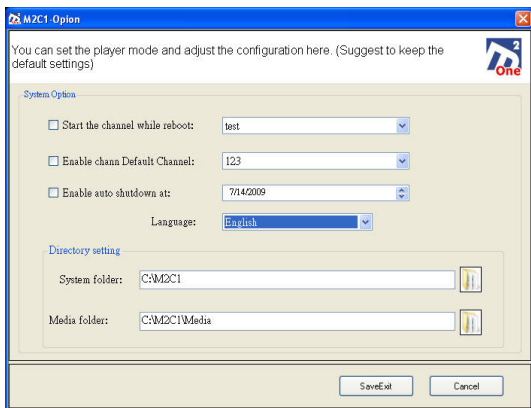
Click  to complete the channel edition and management.

OPTION

Please right click the  icon on the system tray , and then you will see a pop-up menu . Please select Option to get into the system setting.

Edit	Ctrl+E
Channel	▶
Schedule	Ctrl+S
Option	Ctrl+O
About	Ctrl+A
Exit	Ctrl+Q


The following window shows up:



- Start the channel while reboot: When this item is checked, the system will play the programmed channel automatically after boot. If you set the reboot function after power recovery at the same time, it will play automatically the channel without human operation.

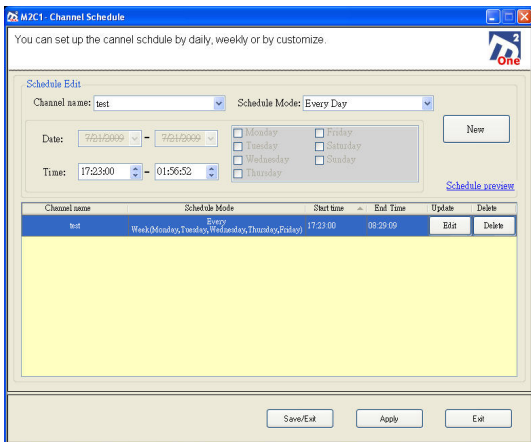
- **Enable channel Default channel:** The purpose of Enable channel is to let users schedule the channels daily, weekly or at a certain time. For example, play channel A from 08:00~12:00 and play channel B from 12:00~17:00. If you want to play other channels that are out of the schedule, please check this option. The default channel will be played when the schedule is empty.
- **Enable auto shutdown at:** When this item is checked, the system will shut down at the set time. You may also set the boot time in BIOS for auto control.
- **Language:** You can choose the language for the interface of the software.
- **Directory Setting:** You can change the directory of the Channel main menu and Media document. Suggest keep default setting if you don't have any special request.

CHANNEL SCHEDULE MANAGEMENT

Right click the  on the system tray, the pop-up menu shows up. Select Schedule to enter the Channel Schedule Management.

Edit	Ctrl+E
Channel	▶
Schedule	Ctrl+S
Option	Ctrl+O
About	Ctrl+A
Exit	Ctrl+Q

Below window will appear :



You can set up the channel schedule by daily, weekly or by customize.

Schedule Edit

Channel name: test Schedule Mode: Every Day

Date: 7/21/2009 - 7/21/2009

Time: 17:23:00 - 01:56:52

☐ Monday ☐ Friday
☐ Tuesday ☐ Saturday
☐ Wednesday ☐ Sunday
☐ Thursday

New

[Schedule preview](#)

Channel name	Schedule Mode	Start time	End Time	Update	Delete
test	Every Week, Monday, Tuesday, Wednesday, Thursday, Friday	17:23:00	08:29:09	Edit	Delete

Save/Exit Apply Exit

The main purpose of Channel Schedule Management is to let users to insert some other channels to the present channels from a special time or period.

It means there can be different layouts and playing lists. That is different from Repeat Mode and Set Time Mode for each channel because these two modes are different

settings but still under the same layout. If you want to switch between channels and schedules, please use this function.

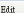
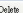
Schedule Edit

You can pre-set a new channel for channel switch or insert. Please see Channel Edit and Manage for more information.


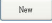
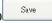

Select a channel name and schedule mode.

- **Daily:** means to play the channel every day and you can set the duration.
- **Weekly:** means to play the channel every week and you can check the day and set the duration.
- **Custom:** means that you can set the date and time. Please set the date area on the left.

Once you finish the setting, please click  to add it to the below list.

Channel name	Schedule Mode	Starttime	End Time	Update	Delete
test	Every Week (Monday, Tuesday, Wednesday, Thursday, Friday)	17:23:00	08:29:09		

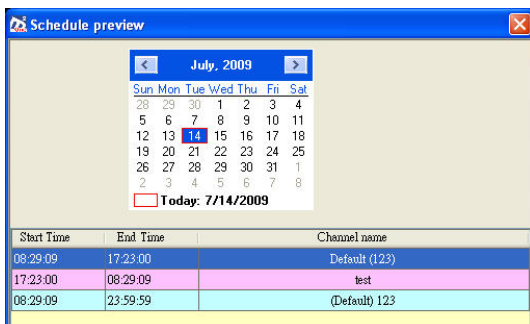
You can choose one in the list and click  or  to edit or delete.

- : When click the button, this information will be updated, and then  will be changed to . You can modify and save it.
- : When click the button, a window will appear to ask you whether to delete this item, if you select Yes, it will be deleted.



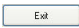
SOFTWARE SETUP

Schedule Preview

You can preview the current setting content at any time. Click [Schedule preview](#) to preview.




You can click a date to preview the channel playing schedule from 00:00:00 to 23:59:59. After finished you can click:

-  to save all the settings and exit.
-  to save all the settings and do not exit.
-  to exit without saving all the settings.

SOFTWARE PLAYING AND OPERATION MODE

It provides hot keys for quick switch function and channel.



Right click  on the system tray and you will find the function. Hot key as below :

Function	Description	Hotkey
Edit	Edit Channel edit & manage	Ctrl + E
Channel	Execute and Switch Channel	Ctrl + F1~F10
Stop	Stop channel playing	ESC
Schedule	Channel playing schedule	Ctrl + S
System setting	System setting & playing control	Ctrl + O
About	Copyright & version	Ctrl + A
Exit	Exit this software	Ctrl + Q

So you can press Ctrl + F1~F10 (up to the channel quantity you set) to execute or switch it or quit by pressing ESC.