

LogView Software Simplifies Setup

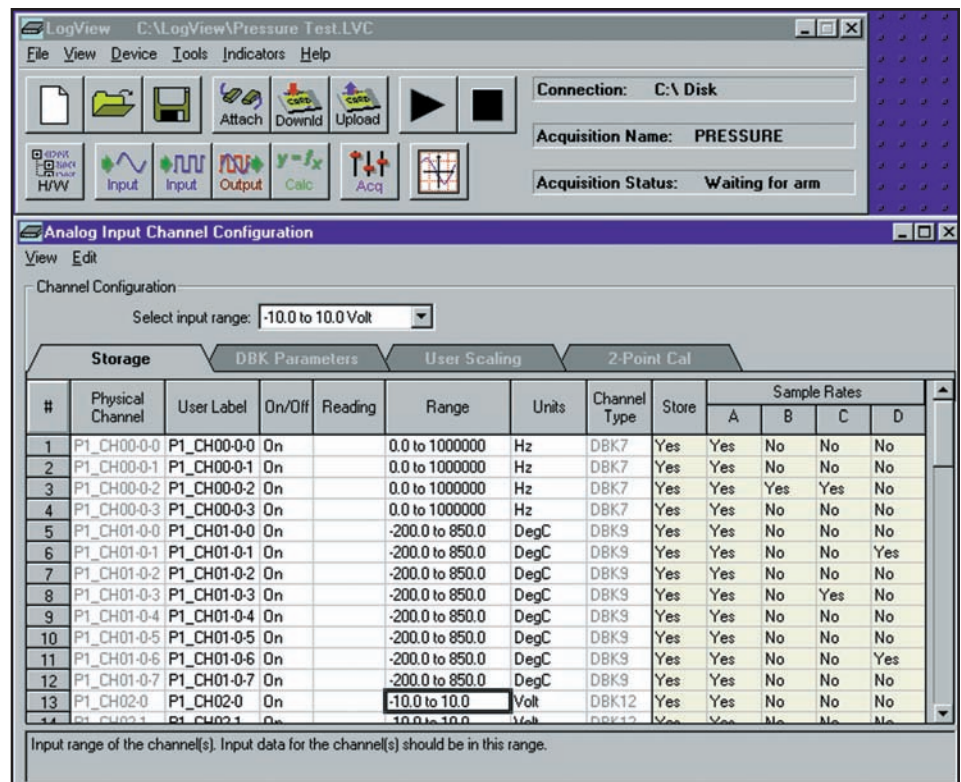
LogView uses a series of spreadsheets to allow simple setup and display of all channel parameters. No auxiliary dialog boxes, configurable block diagrams, or programming methodologies are employed. Simply select the appropriate cell, choose the desired setting from the dropdown list, and the parameter is set. To apply the same setting to multiple channels, select a block of cells within a column and use the spreadsheet's fill down feature.

After the channels and the acquisition parameters have been configured, download the configuration to a PC-Card* in one of your PC's sockets, or send the configuration directly to the LogBook via the serial port, parallel port, or modem. When a PC-Card is used to transport the acquisition configuration to a remote LogBook, inserting the card into its socket signals the LogBook to read and execute the new acquisition configuration.

Once the channel configuration parameters have been downloaded to the LogBook, LogView can display the channel values of a connected LogBook in real time, both before and during an acquisition. LogView conveniently displays channel values in the channel configuration spreadsheet or in real-time bar graphs, analog meters, and digital indicators.

Spreadsheets Make It Simple

All of the parameters for the analog I/O, digital I/O, counter/timers, and calculated channels can be viewed and adjusted through LogView's unique spreadsheet interface. The spreadsheets make it possible to see and adjust the parameters of many channels concurrently, unlike typical data logging software that requires channels to be set up one at a time through auxiliary dialog boxes.



LogView's analog input spreadsheet makes viewing and adjusting many channels easy

Channel parameters are independent of one another and include:

- Turning the channel on or off
- Programmable input range for analog input channels
- Scaling and offset for engineering units conversion
- Any or all of four timebases to log the channel
- The equation that defines the calculated channel
- The physical output channel to direct a calculated or input channel
- Special parameters specific to certain signal conditioning modules

All inputs including analog, digital, frequency and calculated channels are collected synchronously so that data from widely dissimilar inputs can be correlated in time.

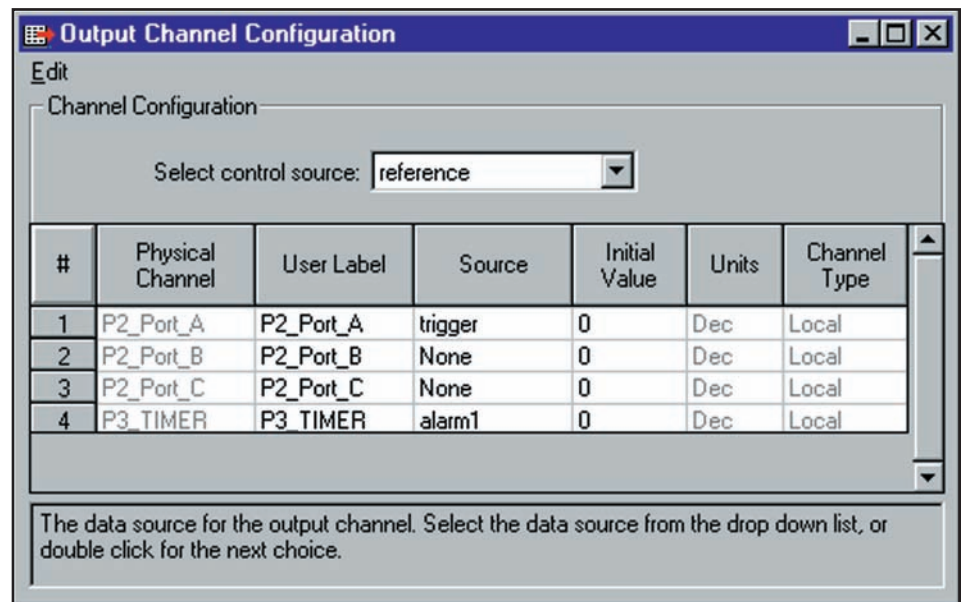
Within the analog spreadsheet, an offset adjustment or 2-point calibration can be performed for each channel. This function compensates for inaccuracies in signal conditioning circuitry and sensors.

LogView provides a file concatenate feature for combining separately uploaded data segments, from the same trigger block, into one file.

* PC-Card not supported by Windows® Vista™. Contact factory for complete information.

Digital Outputs

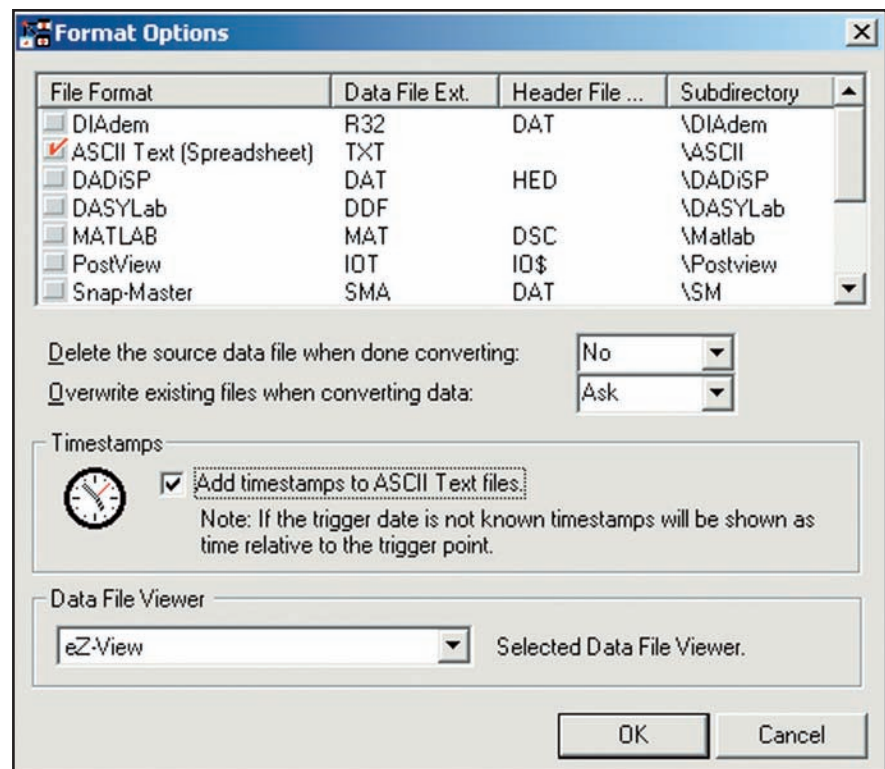
The LogBook's digital outputs allow it to control external devices and/or stimulate the unit under test. Using LogView's calculated channels, equations can be derived that can be used to stimulate digital outputs for use as alarms or for on/off control*. For example, the equation $DIG1 = (CH1 - CH2) < 20$ turns on digital output 1 if the difference between channels 1 and 2 is less than 20.



Output values are easily computed using calculated channels

Data Formats and Data Files**

Data collected with the LogBook can be uploaded to your PC's hard disk in any or all of several data formats for post acquisition analysis. Some of the available file formats include ASCII Text, DASyLab®, DADiSP™, MATLAB®, DIAdem, .WAV, UFF58A, and UFF58B, which are compatible with virtually all post acquisition analysis software. LogView creates the necessary headers for each data format so that the post acquisition analysis software can use the channel labels, the acquisition timebase information, and other necessary parameters.



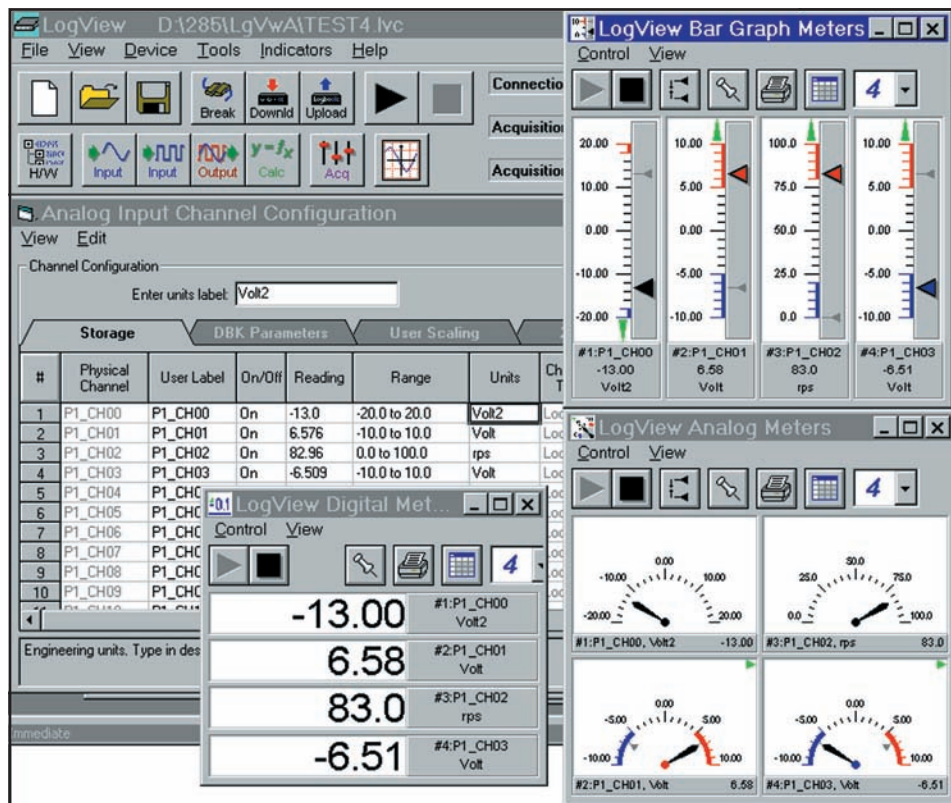
LogView can convert collected data to several file formats

* Not for PID specific control applications

** New formats are continuously being developed, contact factory for availability

Auxiliary Real-Time Indicators

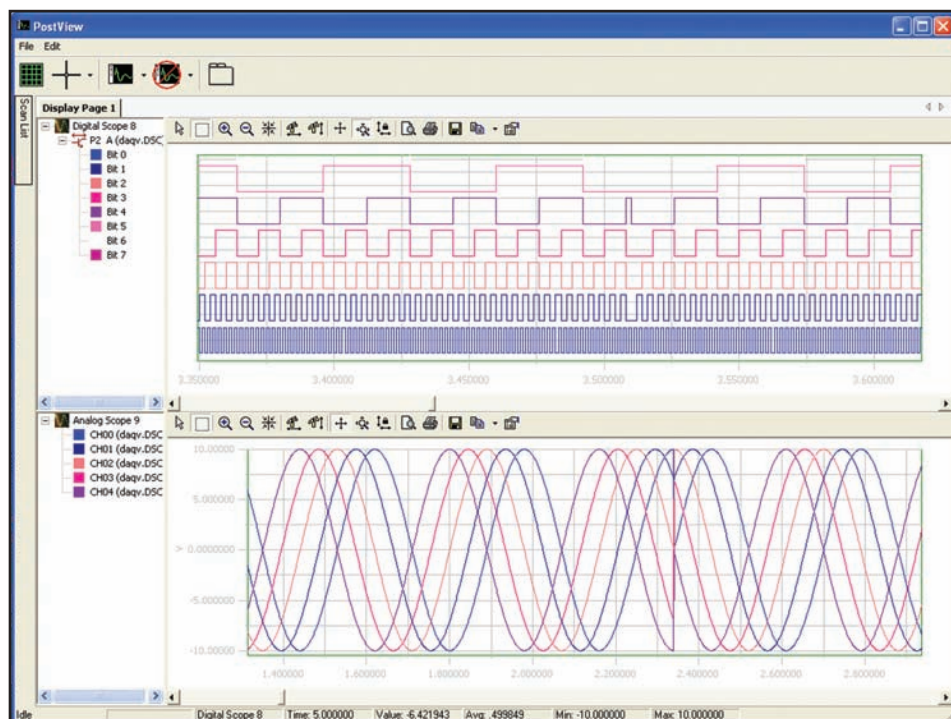
Along with displaying channel data from an attached LogBook in real time in the setup spreadsheets, LogView also provides real-time indicators. These indicators provide a means of monitoring the real-time channel values so that signals can be verified. Each indicator provides a high degree of setup flexibility to customize your display.



Real-time indicators provide channel feedback from an attached LogBook

PostView

PostView is a time-domain post-acquisition data viewing package which is integrated and ready to use from within your View package when you install it. PostView provides easy to use basic time-domain data viewing for IOtech data acquisition Out-of-the-Box View packages.



PostView for post-acquisition viewing