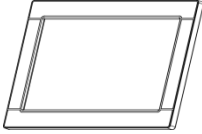


XDS-101 Digital Signboard

Quick Start Guide

Box Contents



Main Unit



AC Power Adapter



Quick Start Guide
(this guide)



Software CD

NOT INCLUDED: A USB keyboard is required for system setup

Optional accessories



USB-Ethernet Adapter



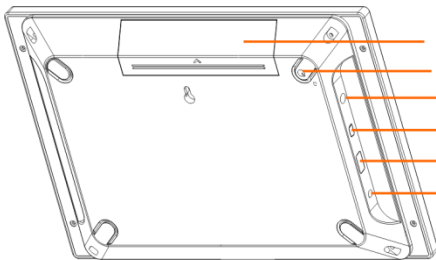
VESA mounting kit

In the **Software CD:**

- Adfotain Manager Express Installer (**for Windows PC**)
- Adfotain Manager Express User's Manual (**PDF**)
- Media Player User's Manual (**PDF**)
- Quick Start Guide (**PDF**)
- Sample SMIL playlist and files folder

System Setup

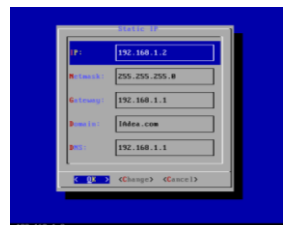
Physical ports and features



- SD and CF memory card slot cover
- Power down momentary button
- 1/8" stereo audio out
- Mini-USB (system reserved)
- USB port for keyboard/flash drive/Ethernet adapter
- 5V DC power input

System Set-up

- 1 ATTACH** the AC power adapter
→ you should see the “Starting up” bar
- 2 WAIT** while player boots up (~ 90 seconds)
→ once you see “Open Standard Media Player” on screen, the unit is ready for content update or menu configuration
- 3 PLUG IN** a USB keyboard to the unit’s USB port
→ the player will enter the *graphical menu system* in approx. 30 seconds
- 4 NAVIGATE** the menus using your keyboard arrows (up), (down), (left), (right) to move the selection, (Space bar) to select, (Enter) to confirm, and (ESC) to cancel
→ *find and set the correct time/date AND time zone.* This is a crucial step to ensure that your contents will play back at the correct times as scheduled. Once set, the internal clock keeps time for up to 12 hours unplugged.



→ *Specify a static IP or look up the automatic DHCP assigned IP* in the network settings sub-menu, depending on your network type
→ *enter the password* in the wireless network settings sub-menu to gain access to a password-protected wireless network

5 SAVE settings and exit the menu, then **REMOVE** the USB keyboard.

→ The player will reboot with new settings in place.

Settings are now retained in flash memory so that you won't lose them even if you remove the power.

6 (OPTIONAL) Using a wired Ethernet connection



The optional *USB Ethernet Adapter* should be connected prior to system boot up. If not, reboot as follows:

Press the Power Button on the rear of the device to shut down > unplug power > plug in the USB Ethernet adapter > reconnect power cord

→ The internal wireless radio is now disabled and Ethernet port is active

→ If you need to re-adjust menu settings, disconnect the USB Ethernet adapter anytime and plug in the USB keyboard (powering down is not need). Remember to reattach USB Ethernet Adapter each time *before* you boot/reboot the system.

Media support and storage expansion

You can use either USB or network methods to upload contents for playback on the media player. The player accepts JPG (baseline, non-interlaced) images and MP4/DIVX/XVID videos up to 720x480 resolution. Images and videos, regardless of resolution, will be played to widescreen aspect ratios.



If you need more storage than the 2GB of internal memory provided, you can insert a 4GB or larger CF/SD card into the expansion ports *prior to boot up*.

IMPORTANT: Do not place content on the card as it will be formatted.

Uploading playback contents using a USB drive



For a quick content update demo, you will need a USB drive and the included Software CD and a PC:

- 1 INSERT** a USB drive into your PC's USB port and **FORMAT** using FAT32
- 2 LOAD** the Software CD into your PC's CD or DVD drive
- 3 LOCATE** the "SMIL" folder on CD and **COPY** the folder to USB drive
- 4** *With your player booted up from the System Set-up process,* **INSERT** the USB drive to player's USB port
- 5** Device sync begins, and contents will **TRANSFER** to the player
- 6 REMOVE** the USB drive once the sample contents begin to play

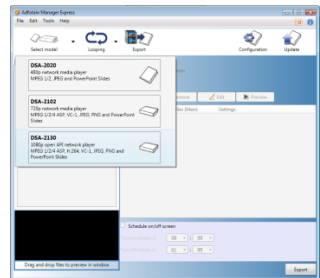
SMIL syntax tutorials can be found at www.a-smil.org

Adfotain Manager Express signage utility for Windows PC

With Adfotain Manager Express you can:

- Connect and set up single or multiple players
- Import and publish PowerPoint slideshows*
- Schedule weekly playlists
- Upload media via network or USB drive
- Administer firmware updates ...and more

You can find the software installer and PDF User's Manual in the Software CD.



*requires PowerPoint 2003 or later installed

Next steps

More detailed instructions are available in the **XDS-101 User's Manual** and the **Software User's Manual** (PDF files) on CD.