



User Manual

SOM-4463

Trusted ePlatform Services

ADVANTECH

Copyright

The documentation and the software included with this product are copyrighted 2010 by Advantech Co., Ltd. All rights are reserved. Advantech Co., Ltd. reserves the right to make improvements in the products described in this manual at any time without notice.

No part of this manual may be reproduced, copied, translated or transmitted in any form or by any means without the prior written permission of Advantech Co., Ltd. Information provided in this manual is intended to be accurate and reliable. However, Advantech Co., Ltd. assumes no responsibility for its use, nor for any infringements of the rights of third parties, which may result from its use.

Acknowledgements

AMI is a trademark of American Megatrends Inc.

VIA is a trademark of VIA Technologies, Inc.

IBM, PC/AT, PS/2 and VGA are trademarks of International Business Machines Corporation.

Intel and Pentium are trademarks of Intel Corporation.

Microsoft Windows® is a registered trademark of Microsoft Corp.

RTL is a trademark of Realtek Semi-Conductor Co., Ltd.

ESS is a trademark of ESS Technology, Inc.

UMC is a trademark of United Microelectronics Corporation.

SMI is a trademark of Silicon Motion, Inc.

Creative is a trademark of Creative Technology LTD.

CHRONTEL is a trademark of Chrontel Inc.

All other product names or trademarks are properties of their respective owners.

Product Warranty (2 years)

Advantech warrants to you, the original purchaser, that each of its products will be free from defects in materials and workmanship for two years from the date of purchase.

This warranty does not apply to any products which have been repaired or altered by persons other than repair personnel authorized by Advantech, or which have been subject to misuse, abuse, accident or improper installation. Advantech assumes no liability under the terms of this warranty as a consequence of such events.

Because of Advantech's high quality-control standards and rigorous testing, most of our customers never need to use our repair service. If an Advantech product is defective, it will be repaired or replaced at no charge during the warranty period. For out-of-warranty repairs, you will be billed according to the cost of replacement materials, service time and freight. Please consult your dealer for more details.

If you think you have a defective product, follow these steps:

1. Collect all the information about the problem encountered. (For example, CPU speed, Advantech products used, other hardware and software used, etc.) Note anything abnormal and list any onscreen messages you get when the problem occurs.
2. Call your dealer and describe the problem. Please have your manual, product, and any helpful information readily available.
3. If your product is diagnosed as defective, obtain an RMA (return merchandise authorization) number from your dealer. This allows us to process your return more quickly.
4. Carefully pack the defective product, a fully-completed Repair and Replacement Order Card and a photocopy proof of purchase date (such as your sales receipt) in a shippable container. A product returned without proof of the purchase date is not eligible for warranty service.
5. Write the RMA number visibly on the outside of the package and ship it prepaid to your dealer.

Technical Support and Assistance

1. Visit the Advantech web site at www.advantech.com/support where you can find the latest information about the product.
2. Contact your distributor, sales representative, or Advantech's customer service center for technical support if you need additional assistance. Please have the following information ready before you call:
 - Product name and serial number
 - Description of your peripheral attachments
 - Description of your software (operating system, version, application software, etc.)
 - A complete description of the problem
 - The exact wording of any error messages

Safety Instructions

1. Read these safety instructions carefully.
2. Keep this User Manual for later reference.
3. Disconnect this equipment from any AC outlet before cleaning. Use a damp cloth. Do not use liquid or spray detergents for cleaning.
4. For plug-in equipment, the power outlet socket must be located near the equipment and must be easily accessible.
5. Keep this equipment away from humidity.
6. Put this equipment on a reliable surface during installation. Dropping it or letting it fall may cause damage.
7. The openings on the enclosure are for air convection. Protect the equipment from overheating. **DO NOT COVER THE OPENINGS.**
8. Make sure the voltage of the power source is correct before connecting the equipment to the power outlet.
9. Position the power cord so that people cannot step on it. Do not place anything over the power cord.
10. All cautions and warnings on the equipment should be noted.
11. If the equipment is not used for a long time, disconnect it from the power source to avoid damage by transient overvoltage.
12. Never pour any liquid into an opening. This may cause fire or electrical shock.
13. Never open the equipment. For safety reasons, the equipment should be opened only by qualified service personnel.
14. If one of the following situations arises, get the equipment checked by service personnel:
 - The power cord or plug is damaged.
 - Liquid has penetrated into the equipment.
 - The equipment has been exposed to moisture.
 - The equipment does not work well, or you cannot get it to work according to the user's manual.
 - The equipment has been dropped and damaged.
 - The equipment has obvious signs of breakage.

Safety Precaution - Static Electricity

Follow these simple precautions to protect yourself from harm and the products from damage.

- To avoid electrical shock, always disconnect the power from your PC chassis before you work on it. Don't touch any components on the CPU card or other cards while the PC is on.
- Disconnect power before making any configuration changes. The sudden rush of power as you connect a jumper or install a card may damage sensitive electronic components.

Packing List

Before you begin installing your card, please make sure that the following materials have been shipped:

- 1 SOM-4463 module with heatspreader
- 1 Utility CD (including user manual and drivers)

Contents

| | | |
|------------------|--|----------|
| Chapter 1 | General Information | 1 |
| 1.1 | Introduction | 2 |
| 1.2 | Specifications | 2 |
| 1.2.1 | Standard System On Module functions | 2 |
| 1.2.2 | VGA/flat panel Interface..... | 2 |
| 1.2.3 | Audio function | 2 |
| 1.2.4 | Mechanical and environmental specifications..... | 2 |
| | | |
| Chapter 2 | Mechanical Information | 5 |
| 2.1 | Board Connectors | 6 |
| | Figure 2.1 SOM-4463 Locating Connectors | 6 |
| 2.2 | Board Mechanical Drawing | 6 |
| 2.2.1 | Front Side | 6 |
| | Figure 2.2 SOM-4463 Front Side Drawing | 6 |
| 2.2.2 | Rear Side..... | 7 |
| | Figure 2.3 SOM-4463 Rear Side Drawing..... | 7 |
| | | |
| Chapter 3 | BIOS Setup Information | 9 |
| | Figure 3.1 Setup program initial screen..... | 10 |
| 3.1 | Entering Setup | 10 |
| 3.2 | Main Setup..... | 11 |
| | Figure 3.2 Main setup screen | 11 |
| 3.2.1 | System time / System date | 11 |
| 3.3 | Advanced BIOS Features Setup | 12 |
| | Figure 3.3 Advanced BIOS features setup screen | 12 |
| 3.3.1 | CPU Configuration | 12 |
| | Figure 3.4 CPU Configuration Setting | 12 |
| 3.3.2 | IDE Configuration..... | 13 |
| | Figure 3.5 IDE Configuration | 13 |
| 3.3.3 | Floppy Configuration..... | 14 |
| | Figure 3.6 Floppy Configuration | 14 |
| 3.3.4 | Super I/O Configuration | 15 |
| | Figure 3.7 Super I/O Configuration..... | 15 |
| 3.3.5 | Hardware Health Configuration..... | 16 |
| | Figure 3.8 Hardware Health Configuration | 16 |
| 3.3.6 | ACPI Settings..... | 16 |
| | Figure 3.9 ACPI Settings | 16 |
| | Figure 3.10General ACPI Configuration | 17 |
| | Figure 3.11Advanced ACPI Configuration..... | 17 |
| | Figure 3.12Chipset ACPI Configuration..... | 18 |
| 3.3.7 | AHCI Configuration | 19 |
| | Figure 3.13Advanced ACPI Configuration..... | 19 |
| 3.3.8 | APM Configuration | 19 |
| | Figure 3.14APM Configuration | 19 |
| 3.3.9 | Event Log Configuration | 20 |
| | Figure 3.15Event Log Configuration | 20 |
| 3.3.10 | MPS Configuration..... | 21 |
| | Figure 3.16MPS Configuration | 21 |
| 3.3.11 | Smbios Configuration..... | 21 |
| | Figure 3.17Smbios Configuration | 21 |
| 3.3.12 | USB Configuration | 22 |

| | | |
|-------|---|----|
| | Figure 3.18 South Bridge ACPI Configuration | 22 |
| | Figure 3.19 USB Mass storage Device Configuration | 23 |
| 3.4 | Advanced PCI/PnP Settings | 23 |
| | Figure 3.20 PCI/PNP Setup | 23 |
| 3.5 | Boot Settings | 25 |
| | Figure 3.21 Boot Setup Utility | 25 |
| 3.5.1 | Boot settings Configuration | 25 |
| | Figure 3.22 Boot Setting Configuration | 25 |
| 3.6 | Security Setup | 26 |
| | Figure 3.23 Password Configuration | 26 |
| 3.7 | Advanced Chipset Settings | 27 |
| | Figure 3.24 Advanced Chipset Settings | 27 |
| 3.7.1 | North Bridge Chipset Configuration | 27 |
| | Figure 3.25 North Bridge Configuration | 27 |
| | Figure 3.26 Video Function Configuration | 28 |
| 3.7.2 | South Bridge Chipset Configuration | 29 |
| | Figure 3.27 South Bridge Configuration | 29 |
| 3.8 | Exit Option | 30 |
| | Figure 3.28 Exit Option | 30 |
| 3.8.1 | Save Changes and Exit | 30 |
| 3.8.2 | Discard Changes and Exit | 30 |
| 3.8.3 | Load Optimal Defaults | 30 |
| 3.8.4 | Load Fail-Safe Defaults | 30 |

Chapter 4 Driver Installation..... 33

| | | |
|-------|---|----|
| 4.1 | Driver Introduction | 34 |
| 4.2 | Driver Installation | 34 |
| 4.2.1 | Step 1- Install Intel INF Update Driver for Windows XP/Windows 7 | 35 |
| 4.2.2 | Step 2- Install Intel Graphic Driver for Windows XP/Windows 7 | 35 |
| 4.2.3 | Step 3- Install Audio Driver for Windows XP/Windows 7 | 35 |
| 4.2.4 | Step 4- Install Intel Ethernet Driver for Windows XP/Windows 7 | 35 |
| 4.2.5 | Step 5- Install IT8888 PCI to ISA Driver for Windows XP/Windows 7 | 35 |

Appendix A Watchdog Timer..... 37

| | | |
|-----|--------------------------------------|----|
| A.1 | Programming the Watchdog Timer | 38 |
|-----|--------------------------------------|----|

Appendix B System Assignments..... 41

| | | |
|-----|--|----|
| B.1 | System I/O Ports | 42 |
| | Table B.1: System I/O ports | 42 |
| B.2 | DMA Channel Assignments | 43 |
| | Table B.2: DMA channel assignments | 43 |
| B.3 | Interrupt Assignments | 43 |
| | Table B.3: Interrupt assignments | 43 |
| B.4 | System Memory Map | 44 |
| | Table B.4: System Memory Map | 44 |

Chapter 1

General Information

This chapter gives background information on the SOM-4463 CPU System on Module.

Sections include:

- Introduction
- Specifications

1.1 Introduction

SOM-4463 is an embedded CPU module that fully complies with the SOM-ETX form factor standard. The new CPU module supports Intel N450/D510 +ICH8M chipsets which supports PCI and ISA interfaces. In a basic form factor of 95mm x 114mm, the SOM-4463 provides a scalable cost effective and easy to integrate solution for customers' applications by utilizing a plug-in CPU module on an application-specific customer solution board. The SOM-4463 with advanced I/O capacity incorporates such as PCI,ISA, IDE, USB 2.0, SATA LVDS interfaces. SOM-4463 offers design partners more choices for their own applications needing cost effective solution while maintaining a compact form factor.

SOM-4463 complies with the "Green Function" standard and supports Doze, Standby and Suspend modes. The small size (95 mm x 114 mm) and use of four high capacity connectors based on the proven SOM-ETX form factor, allow the SOM-ETX modules to be easily and securely mounted onto a customized solution board or our standard SOM-DB4400 development board.

1.2 Specifications

1.2.1 Standard System On Module functions

- **CPU:** Intel N450 single core Processor
Intel D510 Dual core Processor
- **BIOS:** AMI 16 Mbit Flash BIOS
- **Chipset:** Intel N450/D510+ICH8M
- **System memory:** DDR2 667 MHz up to 2GB (N450)
DDR2 667 MHz up to 4GB (D510)
- **Enhanced IDE interface:** 1 EIDE channel for two devices. BIOS auto-detect up to UDMA -100
- **Watchdog timer:** 256 timer intervals, from 1 to 255 seconds or minutes according to software setup, which features jumperless selection and enabling generation of system reset signal.
- **USB interface:** Support 4 USB 2.0 ports
- **Expansion Interface:** Supports PCI and ISA bus interfaces

1.2.2 VGA/flat panel Interface

- **Chipset:** Intel N450/D510
- **Memory Size:** DVMT 3.0 support up to 128 MB
- **Display mode:**
CRT Mode: Up to 1400 x 1050 (N450)
Up to 2048 x 1536 (D510)
LVDS Mode: Support 18-bit LVDS

1.2.3 Audio function

- **Audio interface:** Realtek ALC888 codec

1.2.4 Mechanical and environmental specifications

- **Dimensions:** ETX form-factor, 114 mm x 95 mm (4.5" x 3.74")
- **Power supply voltage:** +5 V power only
(+5VSB is optional for ACPI and ATX power)

- **Power requirement:**
Max: +5V @ 2.58 A (D510 w/1GB DDR2 memory)
- **Operating temperature:** 0 ~ 60° C (32 ~ 140° F)
- **Operating humidity:** 0% ~ 90% relative humidity, non-condensing
- **Weight:** 0.103 Kg (weight of total package)

Chapter 2

Mechanical Information

This chapter gives mechanical and connector information on the SOM-4463 CPU System on Module.

Sections include:

- Connector Information
- Mechanical Drawing

2.1 Board Connectors

There are two connectors at the rear side of SOM-4463 for connecting to carrier board.

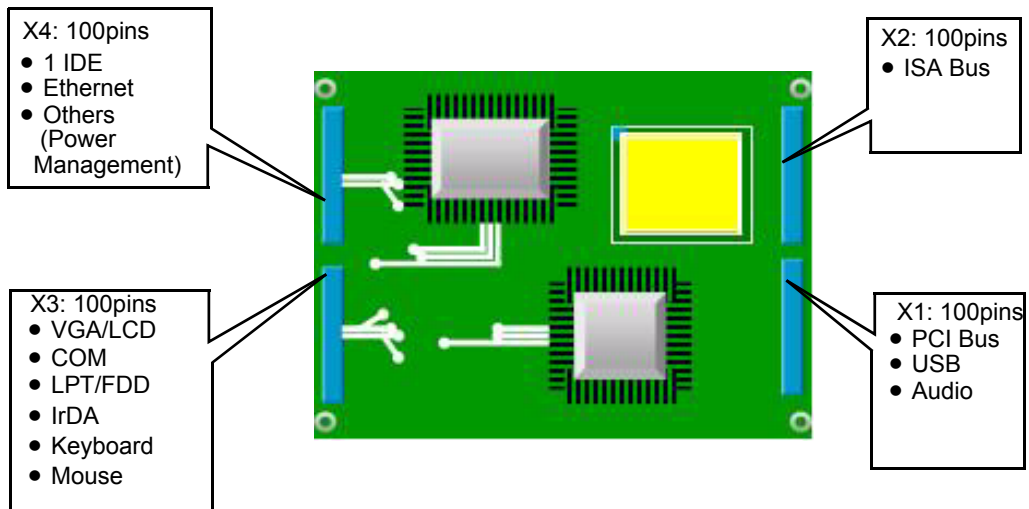


Figure 2.1 SOM-4463 Locating Connectors

■ Pin Assignments for X1/2/3/4 connectors

Please refer to SOM-ETX Design and Specification Guide. You can download it from:

http://www.advantech.com/COM_Design_Support_Services/documentdownload.aspx

2.2 Board Mechanical Drawing

2.2.1 Front Side

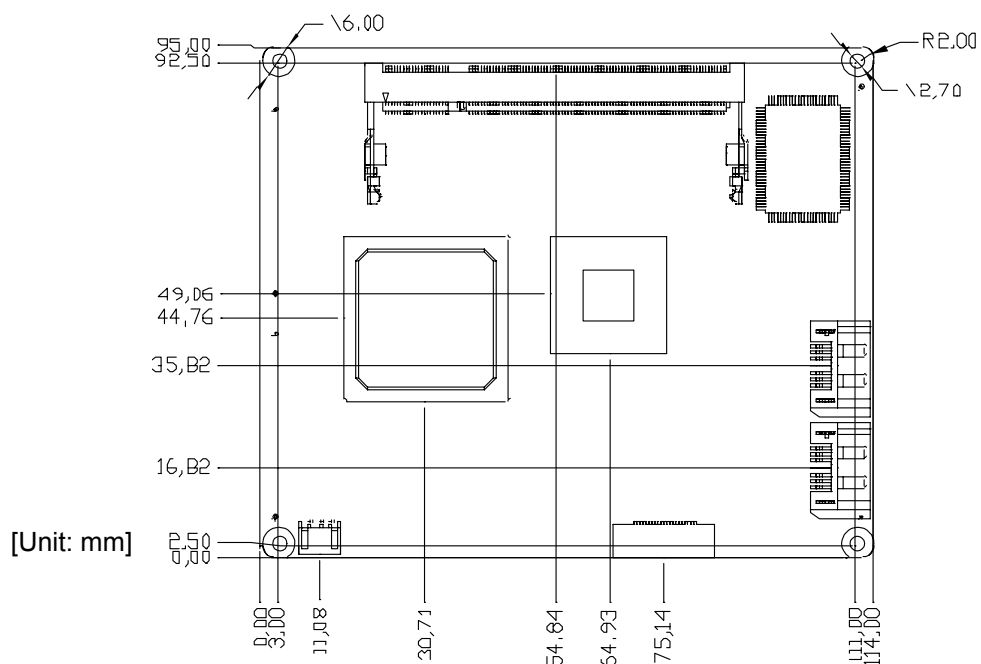


Figure 2.2 SOM-4463 Front Side Drawing

2.2.2 Rear Side

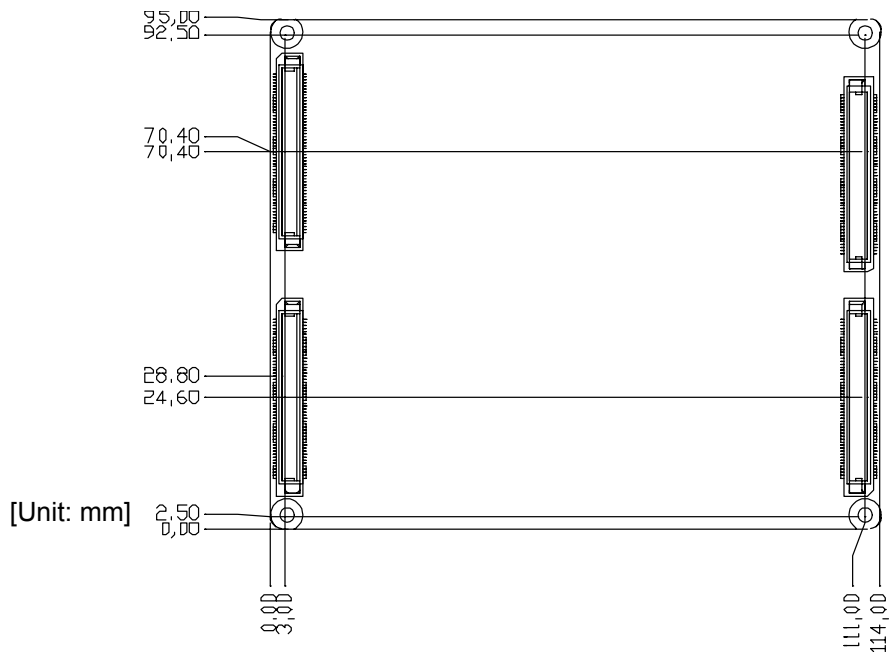


Figure 2.3 SOM-4463 Rear Side Drawing

Chapter 3

BIOS Setup Information

This chapter gives basic BIOS settings for SOM-4463 CPU System on Module.

Sections include:

- Main Setup
- Advanced Setup
- PCIPnP Setup
- Boot Setup
- Security Setup
- Chipset Setup

AMIBIOS has been integrated into many motherboards for over a decade. With the AMIBIOS Setup program, users can modify BIOS settings and control the various system features. This chapter describes the basic navigation of the SOM-4463 BIOS setup screens.

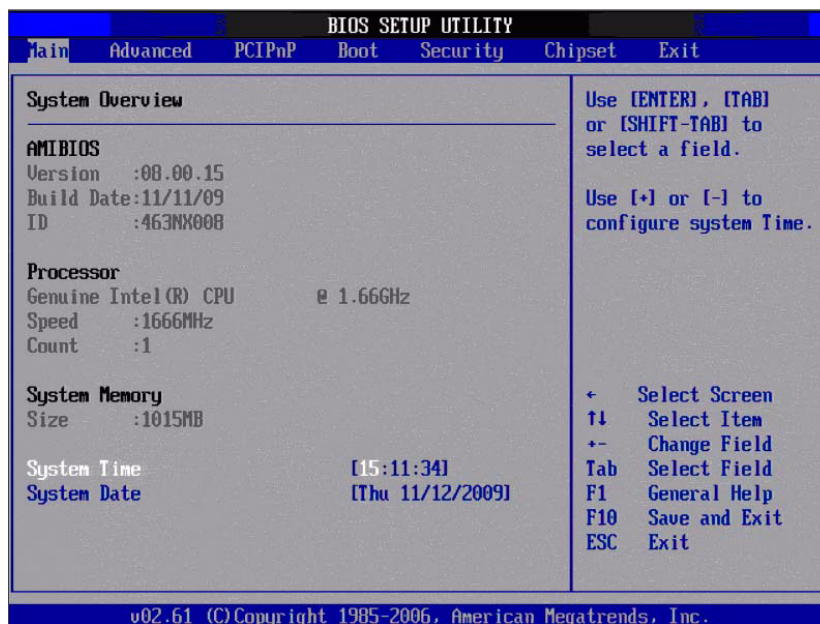


Figure 3.1 Setup program initial screen

AMI's BIOS ROM has a built-in Setup program that allows users to modify the basic system configuration. This information is stored in battery-backup CMOS so it retains the Setup information when the power is turned off.

3.1 Entering Setup

Turn on the computer and check for the "patch code". If there is a number assigned to the patch code, it means that the BIOS supports your CPU. If there is no number assigned to the patch code, please contact an Advantech application engineer to obtain an up-to-date patch code file. This will ensure that your CPU's system status is valid. After ensuring that you have a number assigned to the patch code, press and you will immediately be allowed to enter Setup.

3.2 Main Setup

When users first enter the BIOS Setup Utility, users will enter the Main setup screen. Users can always return to the Main setup screen by selecting the Main tab. There are two Main Setup options, which will be described in this section. The Main BIOS Setup screen is shown below.

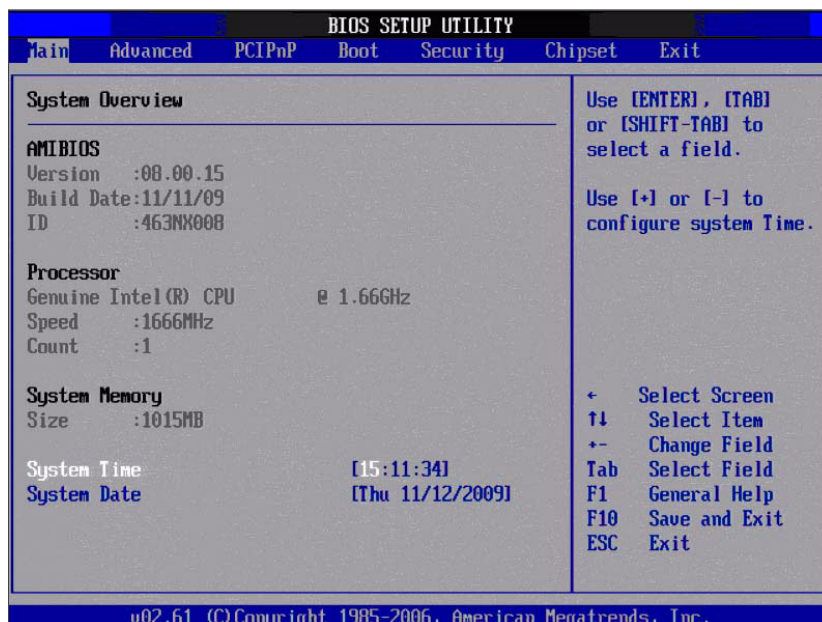


Figure 3.2 Main setup screen

The Main BIOS setup screen has two main frames. The left frame displays all the options that can be configured. Grayed-out options cannot be configured; options in blue can. The right frame displays the key legend.

Above the key legend is an area reserved for a text message. When an option is selected in the left frame, it is highlighted in white. Often a text message will accompany it.

3.2.1 System time / System date

Use this option to change the system time and date. Highlight System Time or System Date using the <Arrow> keys. Enter new values through the keyboard. Press the <Tab> key or the <Arrow> keys to move between fields. The date must be entered in MM/DD/YY format. The time must be entered in HH:MM:SS format.

3.3 Advanced BIOS Features Setup

Select the Advanced tab from the SOM-4463 setup screen to enter the Advanced BIOS Setup screen. Users can select any item in the left frame of the screen, such as CPU Configuration, to go to the sub menu for that item. Users can display an Advanced BIOS Setup option by highlighting it using the <Arrow> keys. All Advanced BIOS Setup options are described in this section. The Advanced BIOS Setup screens are shown below. The sub menus are described on the following pages.

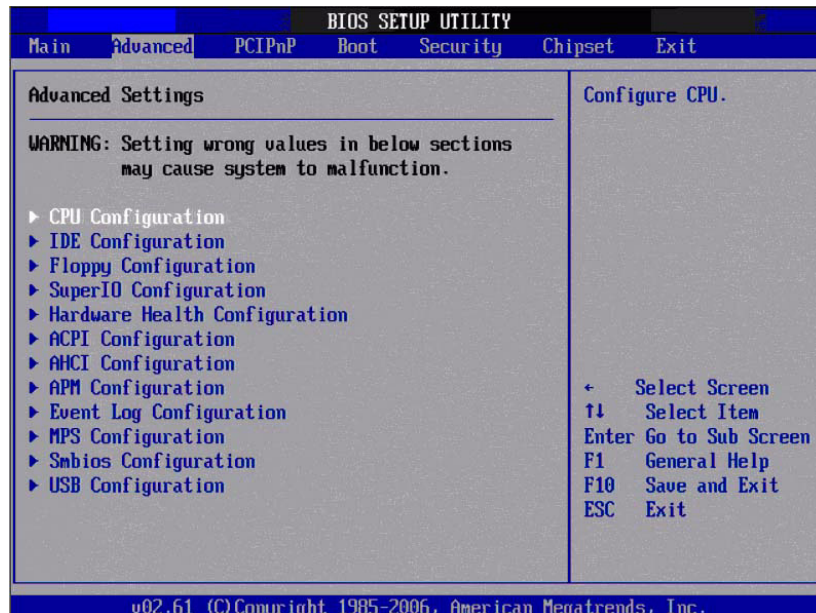


Figure 3.3 Advanced BIOS features setup screen

3.3.1 CPU Configuration

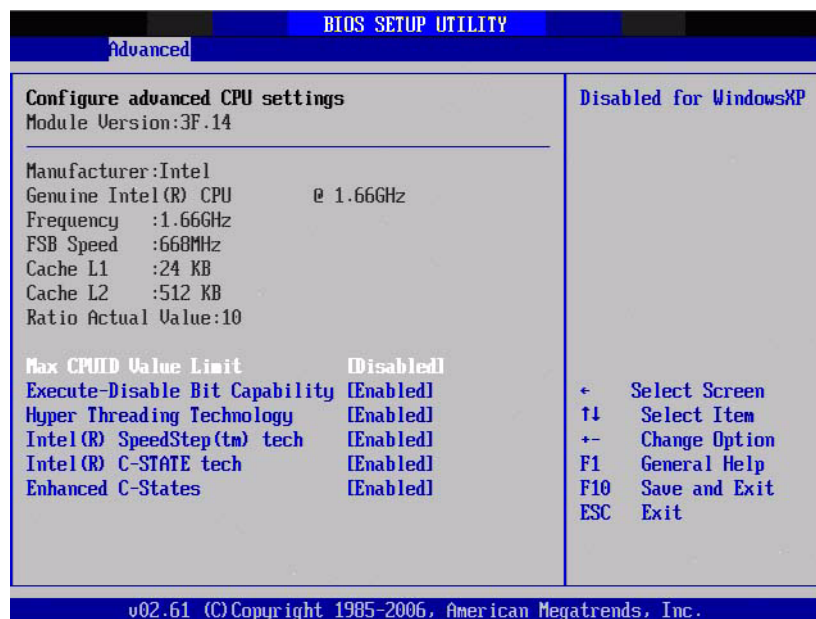


Figure 3.4 CPU Configuration Setting

Max CPUID Value Limit

This item allows users to limit the maximum value of CPUID.

Execute-Disable Bit Capability

This item allows users to enable or disable the No-Execution page protection technology.

Hyper Threading Technology

This item allows users to enable or disable Intel® Hyper Threading technology.

Intel® SpeedStep™ tech

CPU runs at its default speed if disabled; CPU speed is controlled by the operating system if enabled.

Intel® C-STATE tech

This item allows CPU to save more power in idle mode.

Enhanced C-States

Enable / Disable Intel® C-STATE technology.

3.3.2 IDE Configuration

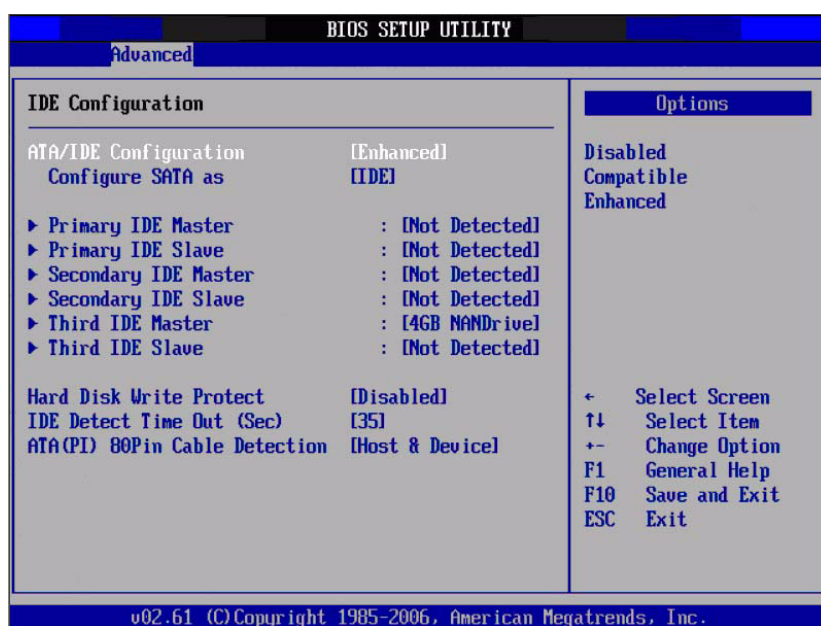


Figure 3.5 IDE Configuration

ATA/IDE Configuration

This item allows users to select Disabled / Compatible / Enhanced.

Legacy IDE Channels

When set to Enhanced mode, users can select IDE or AHCI mode. When select Compatible mode, users can select “SATA only”, “SATA Primary, PATA Secondary” or “PATA only”.

Primary/Secondary/Third IDE Master/Slave

BIOS auto detects the presence of IDE device, and displays the status of auto detection of IDE device.

- Type: Select the type of SATA driver.[Not Installed][Auto][CD/DVD][ARMD]
- LBA/Large Mode: Enables or Disables the LBA mode.
- Block (Multi-Sector Transfer): Enables or disables data multi-sectors transfers.
- PIO Mode: Select the operating mode of PIO.
- DMA Mode: Select the operating mode of DMA
- S.M.A.R.T.: Select the smart monitoring, analysis, and reporting technology.
- 32Bit Data Transfer: Enables or disables 32-bit data transfer.

Hard Disk Write Protect

Disable/Enable device write protection. This will be effective only if device is accessed through BIOS.

IDE Detect Time Out (Sec)

This item allows users to select the time out value for detecting ATA/ATAPI device(s).

ATA(PI) 80Pin Cable Detection

This item allows users to select the way to detect IDE 80 pin cable.

3.3.3 Floppy Configuration

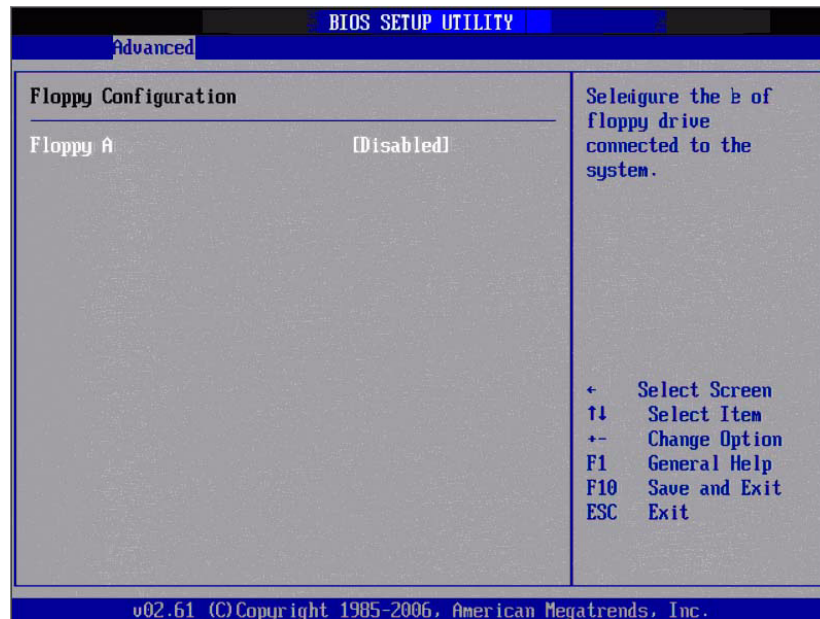


Figure 3.6 Floppy Configuration

Floppy A

Select the type of floppy drive, if any, connected to the system. Recommend to disable floppy driver during installing process of Windows Vista if no floppy drive connected.

3.3.4 Super I/O Configuration

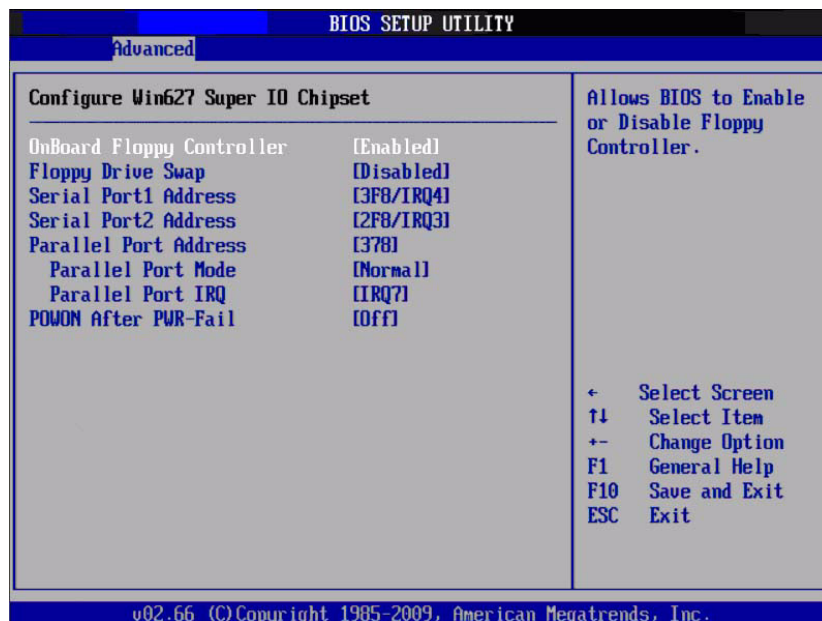


Figure 3.7 Super I/O Configuration

Onboard Floppy Controller

This item allows users to enable or disable onboard floppy controller.

Floppy Drive Swap

This item allows users to enable or disable floppy swap function.

Serial Port1 / Port2 address

This item allows users to select the base addresses and IRQs of serial port1 and port2.

Parallel Port Address

This item allows users to select the base address of parallel port.

Parallel Port Mode

This item allows users to select the mode of parallel port.

Parallel Port IRQ

This item allows users to select the IRQ of parallel port.

POWON After PWR-Fail

This item allows users to select off, on and former status.

3.3.5 Hardware Health Configuration

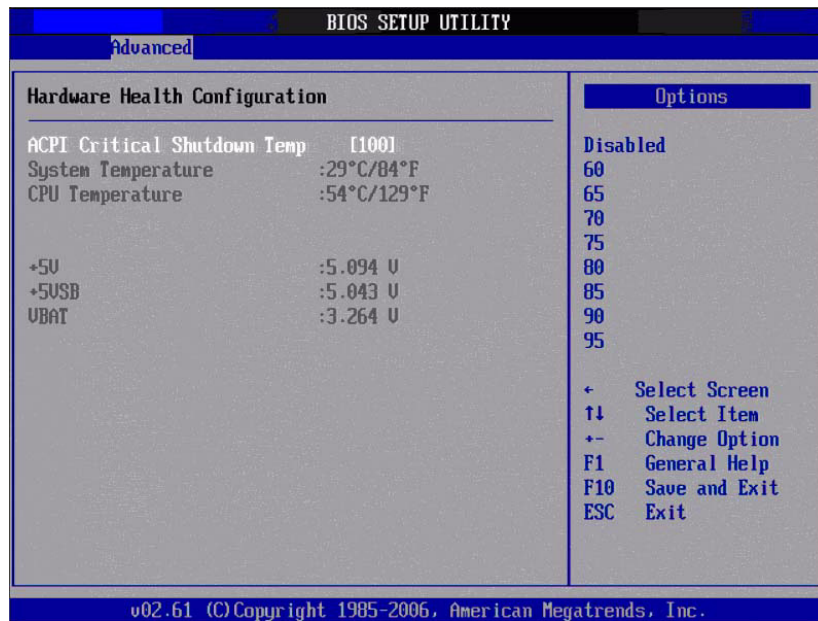


Figure 3.8 Hardware Health Configuration

ACPI Critical Shutdown Temp

This item allows you to set the CPU temperature to shutdown the system in ACPI OS.

Temperature & Voltage show

System/ CPU Temperature

+5 V / +5 VSB / VBAT

3.3.6 ACPI Settings

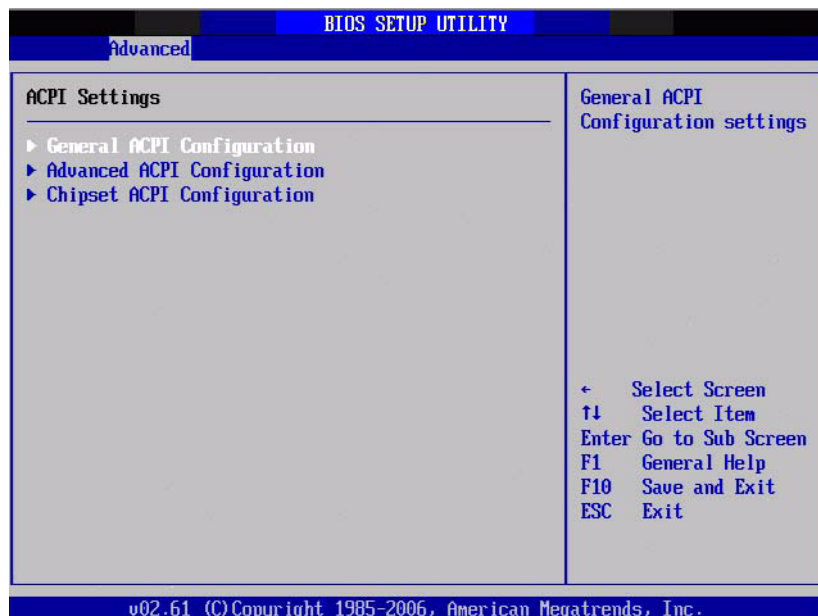


Figure 3.9 ACPI Settings

3.3.6.1 General ACPI Configuration

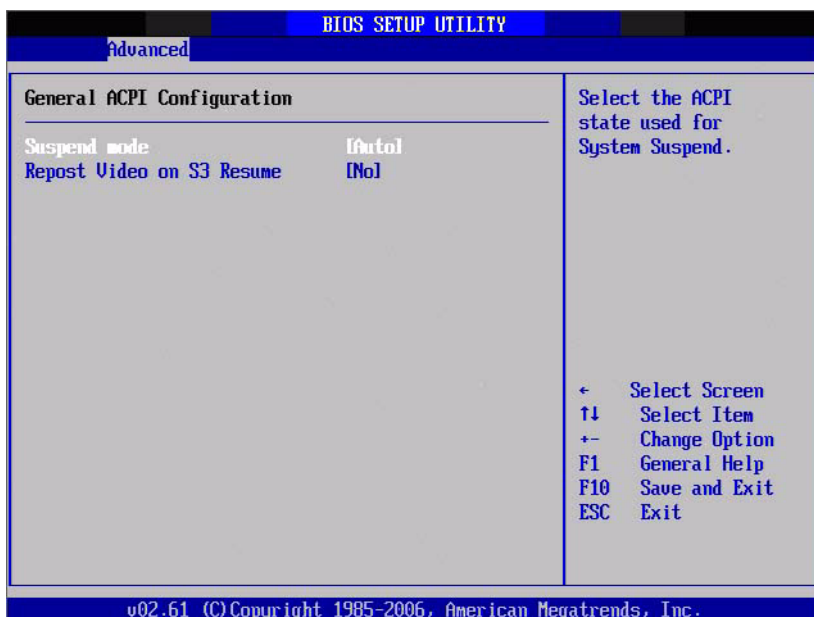


Figure 3.10 General ACPI Configuration

Suspend mode

Select the ACPI state used for system suspend.

Report Video on S3 Resume

This item allows users to invoke VGA BIOS POST on S3/STR resume.

3.3.6.2 Advanced ACPI Configuration

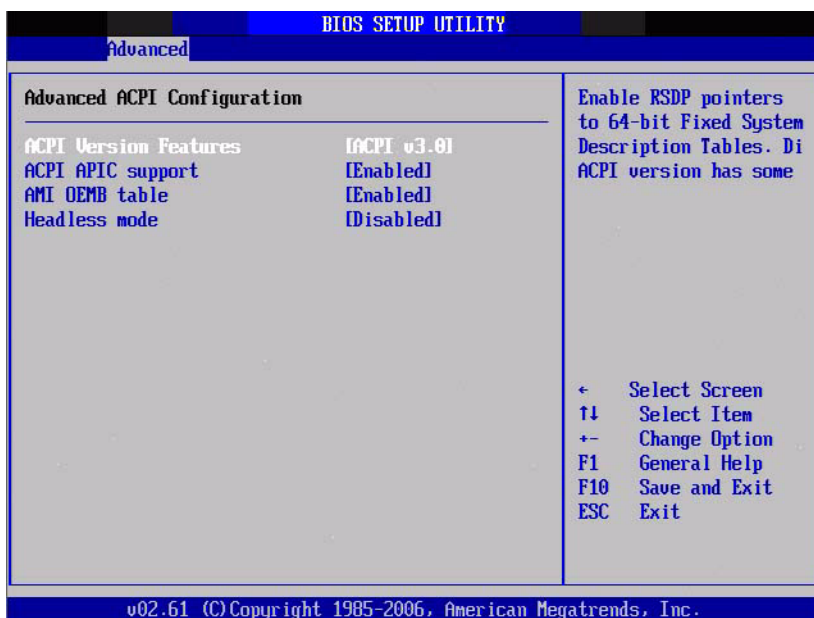


Figure 3.11 Advanced ACPI Configuration

ACPI Version Features

This item allows users to enable RSDP pointers to 64-bit fixed system description tables.

ACPI APIC support

Include APIC table pointer to RSDT pointer list.

AMI OEMB table

Include OEMB table pointer to R(x)SDT pointer lists.

Headless mode

Enable / Disable Headless operation mode through ACPI.

3.3.6.3 Chipset ACPI Configuration

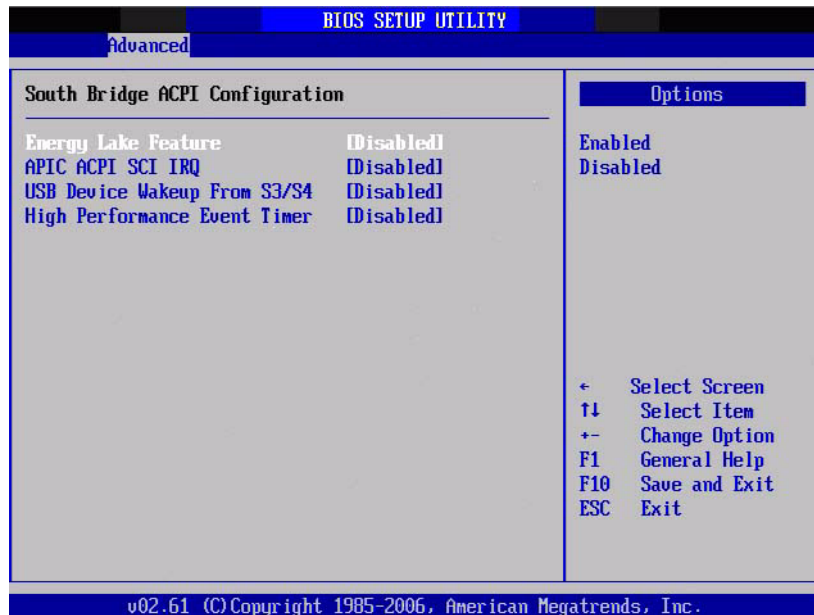


Figure 3.12 Chipset ACPI Configuration

Energy Lake Feature

This item allows users to configure Intel[®] Energy Lake power management technology.

APIC ACPI SCI IRQ

Enable/Disable APIC ACPI SCI IRQ.

USB Device Wakeup From S3/S4

Enable/Disable USB Device Wakeup from S3/S4.

High Performance Event Timer

Enable/Disable High performance Event timer.

3.3.7 AHCI Configuration

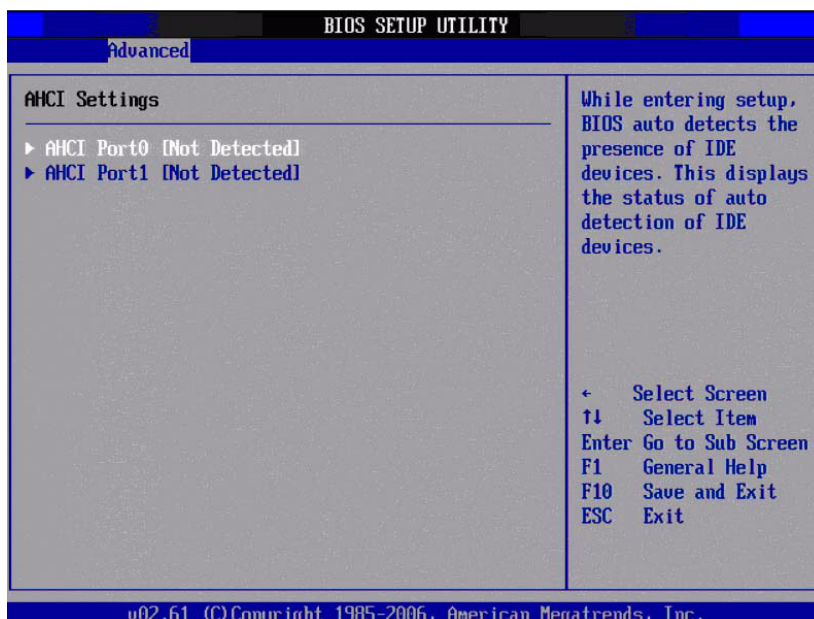


Figure 3.13 Advanced ACPI Configuration

AHCI Port0 / Port1

While entering setup, BIOS auto detects the presence of IDE devices and displays the status of auto detection of IDE device.

3.3.8 APM Configuration



Figure 3.14 APM Configuration

Power Management/APM

Enable or disable APM.

Power Button Mode

Power on, off or enter suspend mode when the power button is pressed. The following options are also available.

Video Power Down Mode

Power down video in suspend or standby mode.

Hard Disk Power Down Mode

Power down Hard Disk in suspend or standby mode.

Standby Time Out

Go into Standby in the specified time.

Suspend Time Out

Go into Suspend in the specified time.

Resume On Ring

Enable / Disable RI to generate a wake event.

Resume On PME#

Enable / Disable PME to generate a wake event.

Resume On RTC Alarm

Enable / Disable RTC to generate a wake event.

3.3.9 Event Log Configuration



Figure 3.15 Event Log Configuration

View Event Log

View all unread events in the event Log.

Mark all events as read

Mark all unread events as read.

Clear Event Log

Discard all events in the event Log.

3.3.10 MPS Configuration

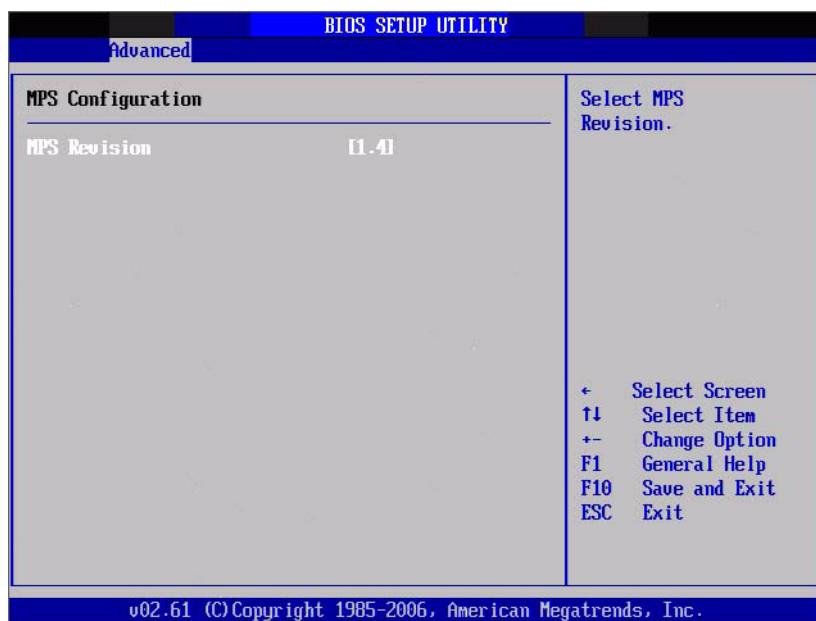


Figure 3.16 MPS Configuration

MPS Revision

This item allows users to select MPS reversion.

3.3.11 Smbios Configuration

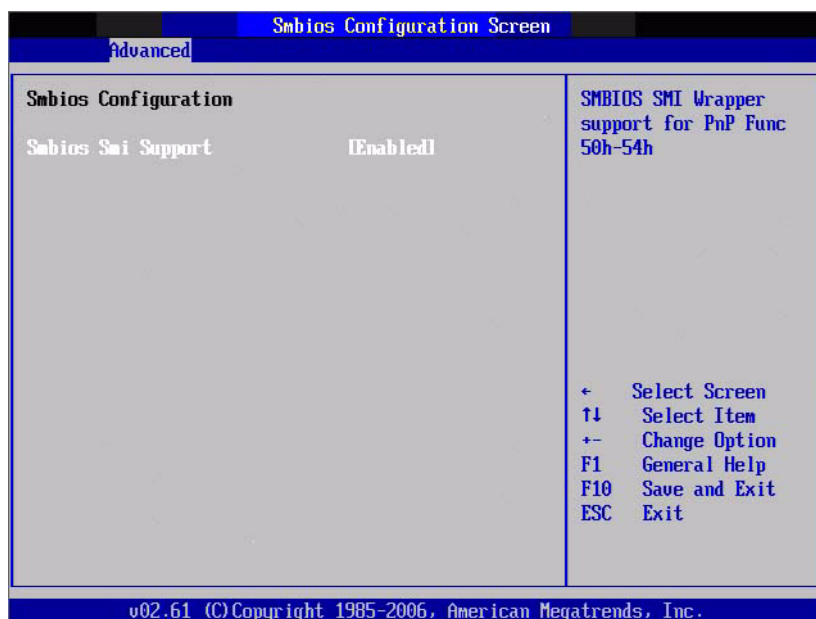


Figure 3.17 Smbios Configuration

Smbios Smi Support

SMBIOS SMI wrapper support for PnP function 50h-54h.

3.3.12 USB Configuration

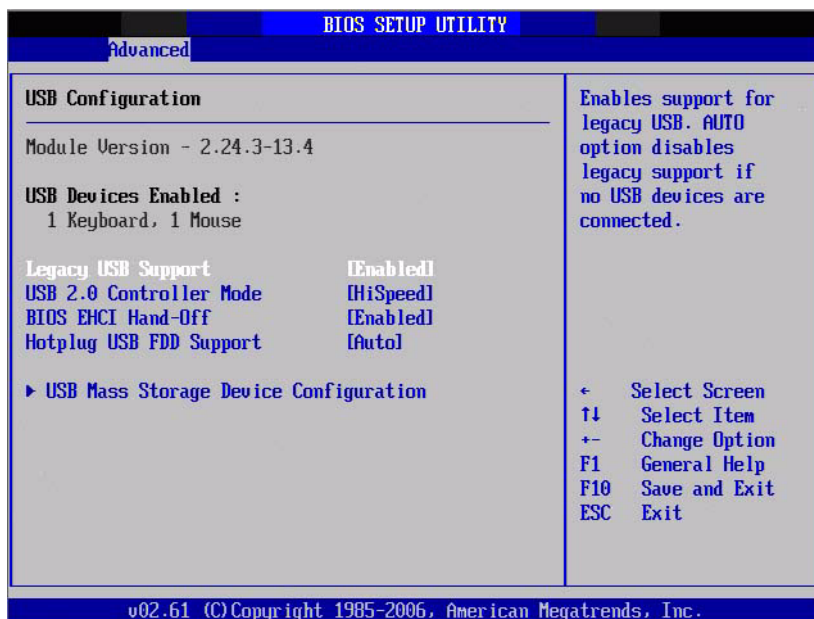


Figure 3.18 South Bridge ACPI Configuration

Legacy USB Support

Enable the support for legacy USB. Auto option disables legacy support if no USB devices are connected.

USB 2.0 Controller Mode

This item allows users to select HiSpeed(480Mbps) or FullSpeed (12Mbps).

BIOS EHCI Hand-Off

This is a workaround for the OS without EHCI hand-off support. The EHCI ownership change should claim by EHCI driver.

Hotplug USB FDD Support

A dummy FDD device is created that will be associated with the hot-plugged FDD later. Auto option creates this dummy device only if there is no USB FDD present.

>>> USB Mass Storage Device Configuration



Figure 3.19 USB Mass storage Device Configuration

USB Mass Storage Reset Delay

Number of seconds POST waits for the USB mass storage device after start unit command.

Emulation Type

If Auto, USB devices less than 530MB will be emulated as Floppy and remaining as hard drive. Force FDD option can be used to force a FDD formatted drive to boot as FDD(Ex. ZIP drive).

3.4 Advanced PCI/PnP Settings

Select the PCI/PnP tab from the SOM-4463 setup screen to enter the Plug and Play BIOS Setup screen. Users can display a Plug and Play BIOS Setup option by highlighting it using the <Arrow> keys. All Plug and Play BIOS Setup options are described in this section. The Plug and Play BIOS Setup screen is shown below.

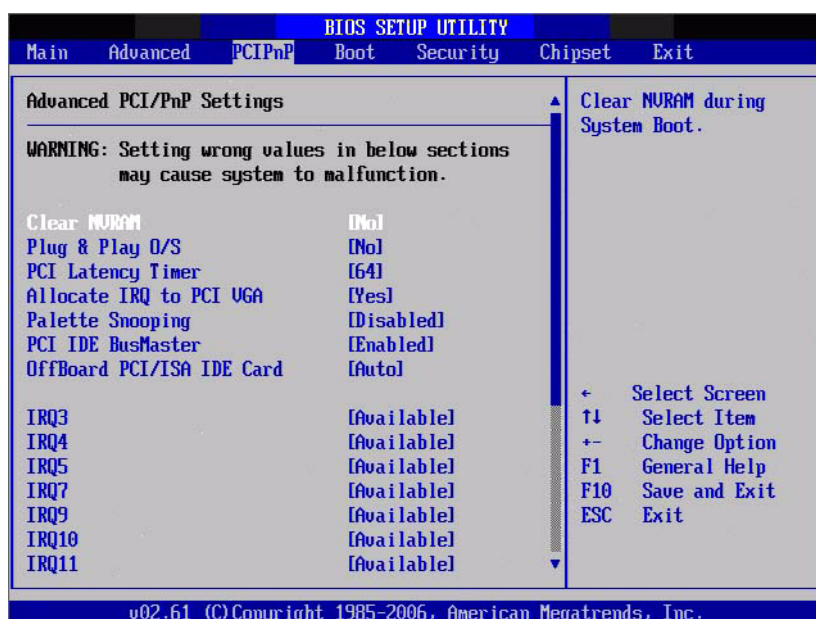


Figure 3.20 PCI/PNP Setup

Clear NVRAM

Set this value to force the BIOS to clear the Non-Volatile Random Access Memory (NVRAM). The Optimal and Fail-Safe default setting is No.

Plug & Play O/S

When set to No, BIOS configures all devices in the system. When set to Yes and if users install a Plug and Play operating system, the operating system configures the Plug and Play devices not required for boot.

PCI Latency Timer

Value in units of PCI clocks for PCI device latency timer register.

Allocate IRQ to PCI VGA

When set to Yes will assign IRQ to PCI VGA card if card requests IRQ. When set to No will not assign IRQ to PCI VGA card even if card requests an IRQ.

Palette Snooping

This item is designed to solve problems caused by some non-standard VGA card.

PCI IDE BusMaster

When set to enable BIOS, it uses PCI bus mastering for reading/writing to IDE drives.

OffBoard PCI/ISA IDE Card

Some PCI IDE cards may require this to be set to the PCI slot number that is holding the card. When set to Auto, it will work for most PCI IDE cards.

IRQ3 / 4 / 5 / 7 / 9 / 10 / 11

This item allows users respectively assign an interruptive type for IRQ-3, 4, 5, 7, 9, 10, 11.

DMA Channel 0 / 1 / 3 / 5 / 6 / 7

When set to Available will specify DMA is available to be used by PCI/PnP devices. When set to Reserved will specify DMA will be reserved for use by legacy ISA devices.

Reserved Memory Size

This item allows users to reserve size of memory block for legacy ISA device.

3.5 Boot Settings

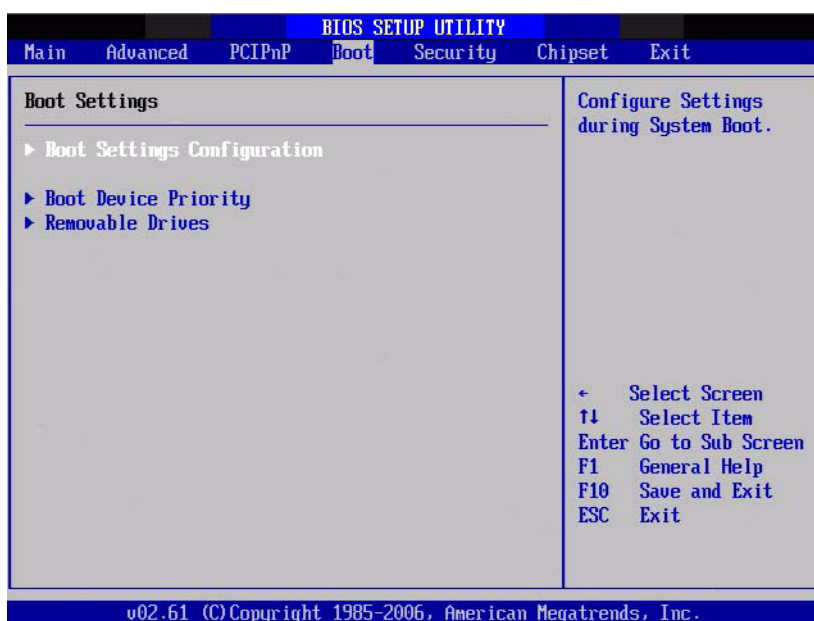


Figure 3.21 Boot Setup Utility

3.5.1 Boot settings Configuration

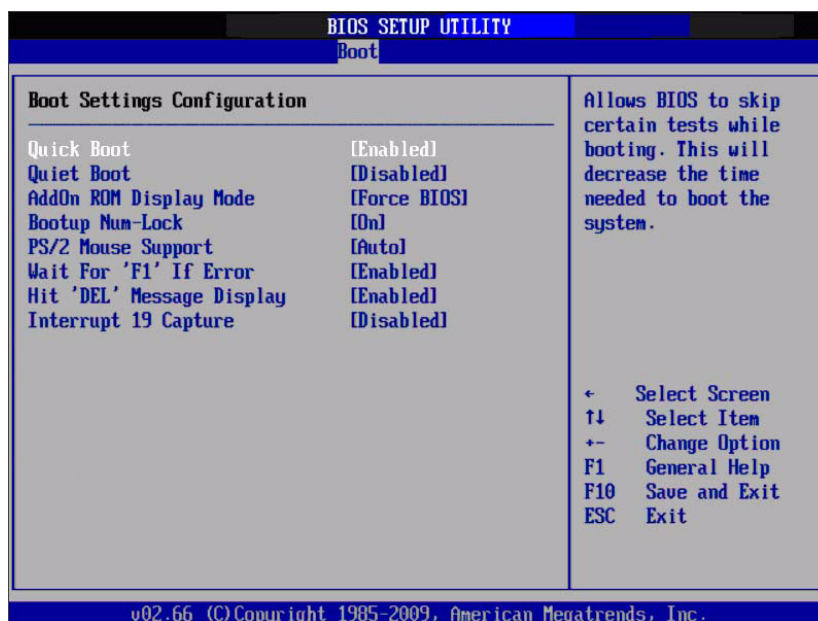


Figure 3.22 Boot Setting Configuration

Quick Boot

This item allows BIOS to skip certain tests while booting. This will decrease the time needed to boot the system.

Quiet Boot

If this option is set to Disabled, the BIOS displays normal POST messages. If Enabled, an OEM Logo is shown instead of POST messages.

AddOn ROM Display Mode

Set display mode for option ROM.

Bootup Num-Lock

Select the Power-on state for Numlock.

PS/2 Mouse Support

Select support for PS/2 Mouse.

Wait For “F1” If Error

Wait for the F1 key to be pressed if an error occurs.

Hit “DEL” Message Display

Displays - Press DEL to run Setup in POST.

Interrupt 19 Capture

This item allows option ROMs to trap interrupt 19.

3.6 Security Setup



Figure 3.23 Password Configuration

Select Security Setup from the SOM-4463 Setup main BIOS setup menu. All Security Setup options, such as password protection and virus protection are described in this section. To access the sub menu for the following items, select the item and press <Enter>:

Change Supervisor / User Password

Select this option and press <ENTER> to access the sub menu, and then type in the password.

Boot sector Virus protection

The boot sector virus protection will warn if any program tries to write to the boot sector.

3.7 Advanced Chipset Settings



Figure 3.24 Advanced Chipset Settings

3.7.1 North Bridge Chipset Configuration

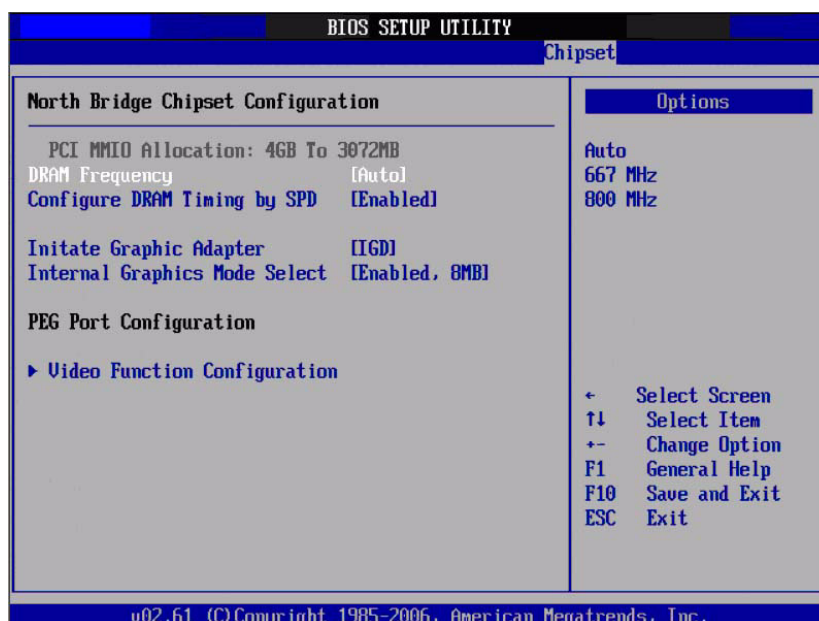


Figure 3.25 North Bridge Configuration

DRAM Frequency

This item allows users to change DRAM frequency manually.

Configure DRAM Timing by SPD

This item allows users to enable or disable detect by DRAM SPD.

Memory Hole

This item allows users to free 15MB-16MB of memory size for some ISA devices.

Initiate Graphic Adapter

This item allows users to select which graphics controller to use as the primary boot device.

Internal Graphics Mode Select: Select the amount of system memory can be used by the Internal graphics device.

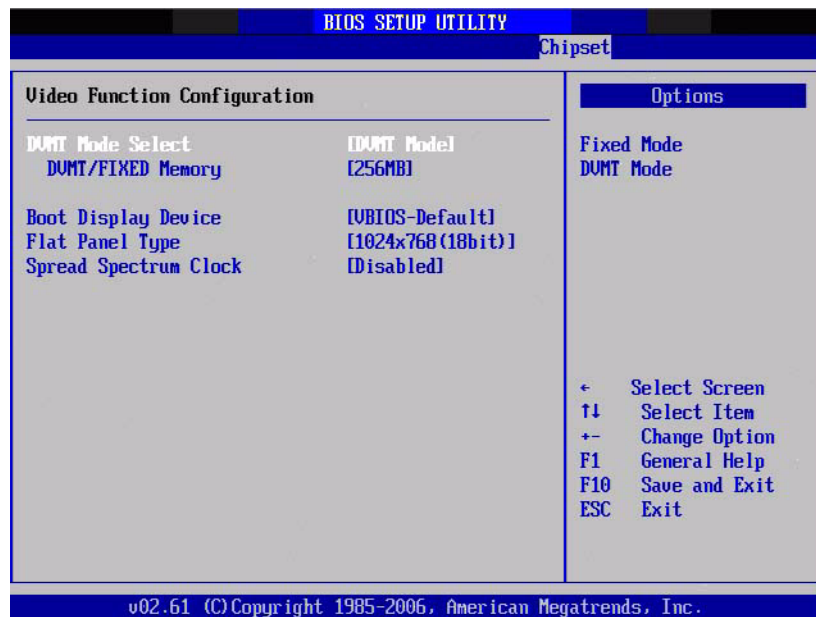


Figure 3.26 Video Function Configuration

DVMT Mode Select

Displays the active system memory mode.

DVMT/FIXED Memory

Specify the amount of DVMT / FIXED system memory to allocate for video memory.

Boot Display Device

Select boot display device at post stage.

Flat Panel Type

This item allows users to select panel resolution.

Spread Spectrum Clock

This item allows users to enable or disable spread spectrum clock.

3.7.2 South Bridge Chipset Configuration

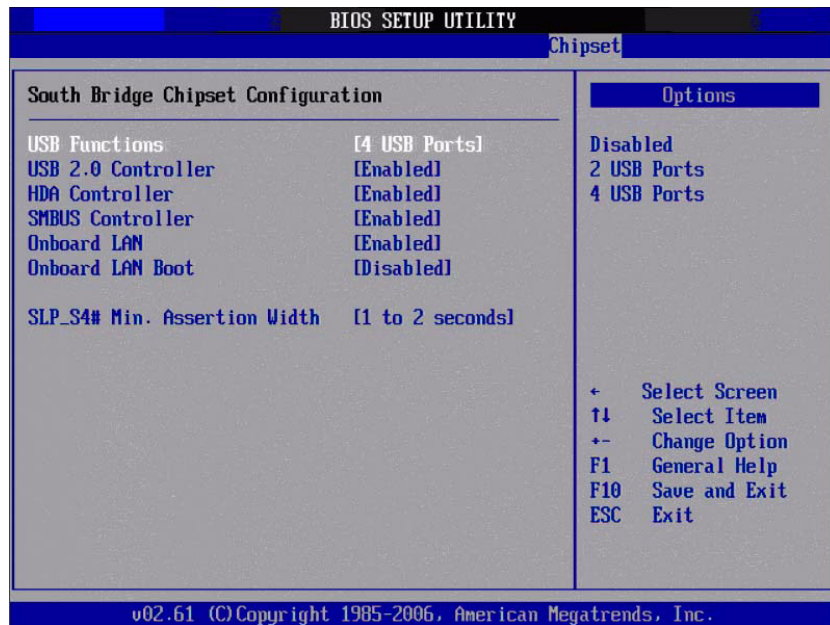


Figure 3.27 South Bridge Configuration

USB Functions

Disabled, 2 USB Ports, 4 USB Ports.

USB 2.0 Controller

Enables or disables the USB 2.0 controller.

HDA Controller

Enables or disables the HDA controller.

SMBUS Controller

Enables or disables the SMBUS controller.

SLP_S4# Min. Assertion Width

This item allows users to set a delay of sorts.

3.8 Exit Option

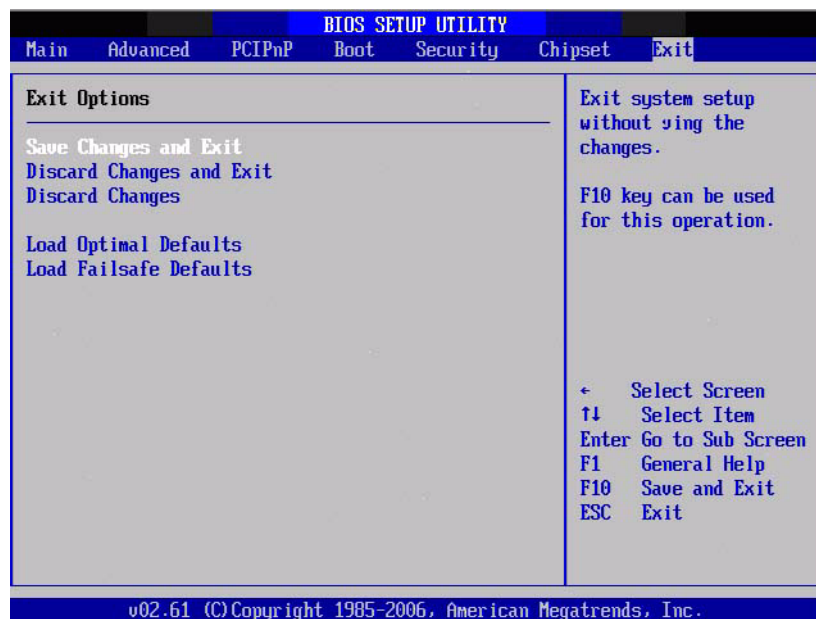


Figure 3.28 Exit Option

3.8.1 Save Changes and Exit

When users have completed system configuration, select this option to save changes, exit BIOS setup menu and reboot the computer to take effect all system configuration parameters.

1. Select Exit Saving Changes from the Exit menu and press <Enter>. The following message appears: Save Configuration Changes and Exit Now? [Ok] [Cancel]
2. Select Ok or cancel.

3.8.2 Discard Changes and Exit

Select this option to quit Setup without making any permanent changes to the system configuration.

1. Select Exit Discarding Changes from the Exit menu and press <Enter>. The following message appears: Discard Changes and Exit Setup Now? [Ok] [Cancel]
2. Select Ok to discard changes and exit. Discard Changes
3. Select Discard Changes from the Exit menu and press <Enter>.

3.8.3 Load Optimal Defaults

The SOM-4463 automatically configures all setup items to optimal settings when users select this option. Optimal Defaults are designed for maximum system performance, but may not work best for all computer applications. In particular, do not use the Optimal Defaults if user's computer is experiencing system configuration problems. Select Load Optimal Defaults from the Exit menu and press <Enter>.

3.8.4 Load Fail-Safe Defaults

The SOM-4463 automatically configures all setup options to fail-safe settings when users select this option. Fail-Safe Defaults are designed for maximum system stability, but not maximum performance. Select Fail-Safe Defaults if user's computer is experiencing system configuration problems.

- 1 Select Load Fail-Safe Defaults from the Exit menu and press <Enter>. The following message appears: Load Fail-Safe Defaults? [OK] [Cancel]
- 2 Select OK to load Fail-Safe defaults.

Chapter 4

Driver Installation

This chapter gives you the driver installation information on the SOM-4463 CPU System on Module.

Sections include:

- Driver Introduction
- Driver Installation

4.1 Driver Introduction

The CD shipped with SOM-4463 should contain below drivers, please follow below sequence to complete the driver installation.

Step 1- Install Intel INF Update Driver

Step 2- Install Intel Graphic Driver

Step 3- Install Audio Driver

Step 4- Install Intel Ethernet Driver

Step 5- Install IT8888 PCI to ISA Driver

Note! *For Windows XP Embedded, Windows CE 5.0 and Linux support, please contact sales representative or technical person.*



Note! *Downloading the update for Windows XP may be required for enabling USB 2.0 function. Please refer to below web link for detail information.*



<http://www.microsoft.com/whdc/system/bus/USB/USB2support.mspx>

4.2 Driver Installation

Insert the SOM-4463 CD into the CD-ROM device, and follow below installation procedures from Step 1 to Step 5.

4.2.1 Step 1- Install Intel INF Update Driver for Windows XP/Windows 7

1. Click on the “Chipset” folder and double click the “*.exe” file.
2. Follow the driver installation wizard’s instructions to complete driver installation.

4.2.2 Step 2- Install Intel Graphic Driver for Windows XP/Windows 7

1. Click on the “VGA” folder and double click the “Setup.exe” file.
2. Follow the driver installation wizard’s instructions to complete driver installation.

Note! Intel Graphic Driver allows users to switch display modes with hot keys.



| Mode | Key 1 | Key 2 | Key 3 |
|-----------------------|-------|-------|-------|
| CRT | CTRL | ALT | F1 |
| LCD | CTRL | ALT | F3 |
| Graphic Control Panel | CTRL | ALT | F12 |

Press Key1 + Key2 + Key3 simultaneously to change display mode

4.2.3 Step 3- Install Audio Driver for Windows XP/Windows 7

1. Click on the “Audio” folder and double click the “WDM_R228_XP.exe” file.
2. Follow the driver installation wizard’s instructions to complete driver installation.

4.2.4 Step 4- Install Intel Ethernet Driver for Windows XP/Windows 7

1. Click on the “LAN” folder and double click the “Autorun.exe” file.
2. Follow the driver installation wizard’s instructions to complete driver installation.

4.2.5 Step 5- Install IT8888 PCI to ISA Driver for Windows XP/Windows 7

1. Click “Start” button and choose the “Control Panel”, Click the “System” Icon.
2. Click the exclamation mark of PCI device.
3. Install the inf file in “Chipset/IT8888” folder.
4. Follow the instructions that the driver installation wizard shows. Then the inf file is installed.

Appendix **A**

Watchdog Timer

This appendix gives you the information about the watchdog timer programming on the SOM-4463 CPU System on Module.

Sections include:

- Programming the Watchdog Timer

A.1 Programming the Watchdog Timer

The sample code of programming the Watchdog Timer function:

Enter the extended function mode, interruptible double-write |

```
MOV DX,2EH
MOV AL,87H
OUT DX,AL
OUT DX,AL
```

Configured logical device 8, configuration register CRF6 |

```
MOV DX,2EH
MOV AL,2BH
OUT DX,AL
MOV DX,2FH
IN AL,DX
AND AL,OEF;Setbit 4=0 Pin 89=WDTO
OUT DX,AL
MOV DX,2EH
MOV AL,07H; point to Logical Device Number Reg.
OUT DX,AL
MOV DX,2FH
MOV AL,08H; select logical device 8
OUT DX,AL;
MOV DX,2EH
MOV AL,30H;Set watch dog activate or inactivate
OUT DX,AL
MOV DX,2FH
MOV AL,01H; 01:activate 00:inactivate
OUT DX,AL;
MOV DX,2EH
MOV AL,F5H; Setting counter unit is second
OUT DX,AL
MOV DX,2FH
MOV AL,00H
OUT DX,AL;
MOV DX,2EH
MOV AL,F6H
OUT DX,AL
MOV DX,2FH
MOV AL,05H; Set 5 seconds
OUT DX,AL
```

;-----

; Exit extended function mode |

;-----

MOV DX,2EH

MOV AL,AAH

OUT DX,AL

Appendix **B**

System Assignments

This appendix gives you the information about the system resource allocation on the SOM-4463 CPU System on Module.

Sections include:

- System I/O ports
- DMA Channel Assignments
- Interrupt Assignments
- System Memory Map

B.1 System I/O Ports

Table B.1: System I/O ports

| I/O Address (Hex) | |
|-------------------|---|
| 0000 - 000F | Direct memory access controller |
| 0000 - 0CF7 | PCI bus |
| 0010 - 001F | Motherboard resources |
| 0020 - 0021 | Programmable interrupt controller |
| 0022 - 003F | Motherboard resources |
| 0040 - 0043 | System timer |
| 0044 - 005F | Motherboard resources |
| 0060 - 0060 | Standard 101/102-Key or Microsoft Natural PS/2 Keyboard |
| 0061 - 0061 | System speaker |
| 0062 - 0063 | Motherboard resources |
| 0064 - 0064 | Standard 101/102-Key or Microsoft Natural PS/2 Keyboard |
| 0065 - 006F | Motherboard resources |
| 0070 - 0071 | System CMOS/real time clock |
| 0072 - 007F | Motherboard resources |
| 0080 - 0080 | Motherboard resources |
| 0081 - 0083 | Direct memory access controller |
| 0084 - 0086 | Motherboard resources |
| 0087 - 0087 | Direct memory access controller |
| 0088 - 0088 | Motherboard resources |
| 0089 - 008B | Direct memory access controller |
| 008C - 008E | Motherboard resources |
| 008F - 008F | Direct memory access controller |
| 0090 - 009F | Motherboard resources |
| 00A0 - 00A1 | Programmable interrupt controller |
| 00A2 - 00BF | Motherboard resources |
| 00C0 - 00DF | Direct memory access controller |
| 00E0 - 00EF | Motherboard resources |
| 00F0 - 00FF | Numeric data processor |
| 01F0 - 01F7 | Primary IDE Channel |
| 0274 - 0277 | ISAPNP Read Data Port |
| 0279 - 0279 | ISAPNP Read Data Port |
| 0280 - 028F | Motherboard resources |
| 0290 - 029F | Motherboard resources |
| 02F8 - 02FF | Communications Port (COM2) |
| 0378 - 037F | Printer Port (LPT1) |
| 03B0 - 03BB | Intel(R) Graphic Media Accelerator 3150 |
| 03C0 - 03DF | Intel(R) Graphic Media Accelerator 3150 |
| 03F6 - 03F6 | Primary IDE Channel |
| 03F8 - 03FF | Communications Port (COM1) |
| 0400 - 041F | Intel(R) ICH8 Family SMBus Controller - 283E |
| 04D0 - 04D1 | Motherboard resources |
| 0500 - 053F | Motherboard resources |
| 0800 - 087F | Motherboard resources |

Table B.1: System I/O ports

| | |
|-------------|---|
| 0A00 - 0A0F | Motherboard resources |
| 0A79 - 0A79 | ISAPNP Read Data Port |
| 0D00 - FFFF | PCI bus |
| C800 - C807 | Intel(R) Graphic Media Accelerator 3150 |
| C880 - C89F | Intel ICH8 Family USB Universal Host Controller - 2831 |
| CC00 - CC1F | Intel ICH8 Family USB Universal Host Controller - 2830 |
| D080 - D08F | Intel ICH8M 3 port Serial ATA Storage Controller - 2828 |
| D400 - D40F | Intel ICH8M 3 port Serial ATA Storage Controller - 2828 |
| D480 - D483 | Intel ICH8M 3 port Serial ATA Storage Controller - 2828 |
| D800 - D807 | Intel ICH8M 3 port Serial ATA Storage Controller - 2828 |
| D880 - D883 | Intel ICH8M 3 port Serial ATA Storage Controller - 2828 |
| DC00 - DC07 | Intel ICH8M 3 port Serial ATA Storage Controller - 2828 |
| EO00 - EFFF | Intel(R) ICH8 Family PCI-E Root Port5 - 2847 |
| E800 - E8FF | Realtek PCIe FE Family Controller |
| FFA0 - FFAF | Intel ICH8M Ultra ATA Storage Controller - 2850 |

B.2 DMA Channel Assignments

Table B.2: DMA channel assignments

| Channel | Function |
|---------|---------------------------------|
| 0 | Available |
| 1 | Available |
| 2 | Available |
| 3 | Available |
| 4 | Direct memory access controller |
| 5 | Available |
| 6 | Available |
| 7 | Available |

B.3 Interrupt Assignments

Table B.3: Interrupt assignments

| Interrupt# | Interrupt source |
|------------|---|
| IRQ 0 | System timer |
| IRQ 1 | Standard 101/102-Key or Microsoft Natural PS/2 Keyboard |
| IRQ 2 | Available |
| IRQ 3 | Communications Port (COM2) |
| IRQ 4 | Communications Port (COM1) |
| IRQ 5 | Available |
| IRQ 6 | Available |
| IRQ 7 | Available |
| IRQ 8 | System CMOS/real time clock |
| IRQ 9 | Microsoft ACPI-Compliant System |
| IRQ 10 | Intel ICH8 Family SMBus Controller - 283E |

Table B.3: Interrupt assignments

| | |
|--------|---|
| IRQ 11 | Available |
| IRQ 12 | PS/2 Compatible Mouse |
| IRQ 13 | Numeric data processor |
| IRQ 14 | Primary IDE Channel |
| IRQ 15 | Available |
| IRQ 16 | Intel(R) Graphic Media Accelerator 3150 |
| IRQ 16 | Realtek PCIe FE Family Controller |
| IRQ 18 | Intel(R) ICH8M 3 port Serial ATA Host Contrller - 2828 |
| IRQ 19 | Intel(R) ICH8 Family USB Universal Host Contrller - 2831* |
| IRQ 21 | Microsoft UAA Bus Driver for High Definition Audio |
| IRQ 22 | Intel(R) ICH8 Family PCI-E Root Port1 - 283F |
| IRQ 22 | Intel(R) ICH8 Family PCI-E Root Port5 - 2847 |
| IRQ 23 | Intel ICH8 Family USB Universal Host Contrller - 2830* |
| IRQ 23 | Intel ICH8 Family USB Universal Host Contrller - 2836* |

*USB and Ethernet IRQ is automatically set by the system.

B.4 System Memory Map

Table B.4: System Memory Map

| Addr. range (Hex) | Device |
|---------------------|--|
| 00000000 - 0009FFFF | System board |
| 000A0000 - 000BFFFF | Intel(R) Graphic Media Accelerator 3150 |
| 000A0000 - 000BFFFF | PCI Bus |
| 000C0000 - 000CFFFF | System board |
| 000D0000 - 000DFFFF | PCI bus |
| 000E0000 - 000FFFFF | System board |
| 00100000 - 3F6FFFFF | System board |
| 3F700000 - DFFFFFFF | PCI Bus |
| D0000000 - DFFFFFFF | Intel(R) Graphic Media Accelerator 3150 |
| E0000000 - EFFFFFFF | Motherboard resource |
| F0000000 - FED8FFFF | PCI Bus |
| FDF00000 - FDFFFFFF | Intel(R) ICH8 Family PCI-E Root Port5 - 2847 |
| FDF00000 - FDFFFFFF | Realtek PCIe FE Family Controller |
| FE880000 - FE8FFFFF | Intel(R) Graphic Media Accelerator 3150 |
| FE900000 - FE9FFFFF | Intel(R) Graphic Media Accelerator 3150 |
| FEAC0000 - FEA7FFFF | Intel(R) Graphic Media Accelerator 3150 |
| FEAF8000 - FEAFBFFF | Microsoft UAA Bus Driver for High Definition Audio |
| FEAFF800 - FEAFFBFF | Intel ICH8 Family USB2 Enhanced Host Controller - 2836 |
| FEAFFC00 - FEAFFCFF | Intel ICH8 Family SMBus Controller - 283E |
| FEB00000 - FEBFFFFF | Intel(R) ICH8 Family PCI-E Root Port5 - 2847 |
| FEBFF000 - FEBFFFFF | Realtek PCIe FE Family Controller |
| FEC00000 - FEC00FFF | Motherboard resources |
| FED14000 - FED19FFF | System board |
| FED1C000 - FED1FFFF | Motherboard resources |
| FED20000 - FED3FFFF | Motherboard resources |

Table B.4: System Memory Map

| | |
|---------------------|-----------------------|
| FED40000 - FED8FFFF | Motherboard resources |
| FED90000 - FED93FFF | System board |
| FED90000 - FFFFFFFF | System board |
| FEE00000 - FEE00FFF | Motherboard resources |

Trusted ePlatform Services

ADVANTECH

www.advantech.com

Please verify specifications before quoting. This guide is intended for reference purposes only.

All product specifications are subject to change without notice.

No part of this publication may be reproduced in any form or by any means, electronic, photocopying, recording or otherwise, without prior written permission of the publisher.

All brand and product names are trademarks or registered trademarks of their respective companies.

© Advantech Co., Ltd. 2010