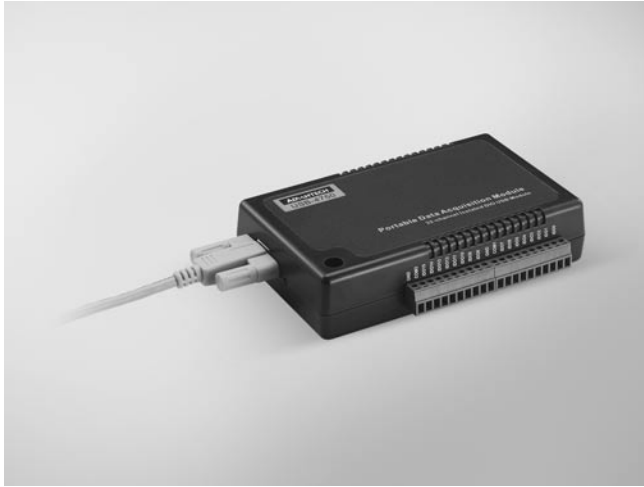


# USB-4750

## 32-ch Isolated Digital I/O USB Module



CE FCC 

### Features

- Compatible with USB 1.1/2.0
- Bus-powered
- 16 isolated DI and 16 isolated DO channels
- High voltage isolation on all channels (2,500 V<sub>DC</sub>)
- High sink current on isolated output channels (100 mA/Channels)
- Supports 5 ~ 50 V<sub>DC</sub> isolated input channels
- Interrupt handling
- Timer/counter capability
- Suitable for DIN-rail mounting
- One lockable USB cable for secure connection included

### Introduction

The USB-4700 series consists of true Plug & Play data acquisition devices. No more opening up your computer chassis to install boards—just plug in the module, then get the data. It's easy and efficient. USB-4750 is a 32-channel isolated digital I/O module. With isolation protection of 2,500 V<sub>DC</sub>, and dry contact support, USB-4750 is ideal for industrial applications where high-voltage protection is required. Each I/O channel of the USB-4750 corresponds to a bit in an I/O port. This makes USB-4750 very easy to program. This module also offers a counter or timer and one digital input interrupt lines to a PC. So users can then easily do configurations by software.

Reliable and rugged enough for industrial applications, yet inexpensive enough for home projects, the USB-4750 is the perfect way to add measurement and control capability to any USB capable computer. The USB-4750 is fully USB Plug & Play and easy to use. It obtains all required power from the USB port, so no external power connection is ever required.

### Specifications

#### Isolated Digital Input

- **Channels** 16
- **Input Voltage** Logic 0: 2 V max.  
Logic 1: 5 V min. (60 V max.) or dry contact
- **Interrupt Capable Ch.** 2
- **Isolation Protection** 2,500 V<sub>DC</sub>

#### Isolated Digital Output

- **Channels** 16
- **Output Type** Sink (NPN)
- **Isolation Protection** 2,500 V<sub>DC</sub>
- **Output Voltage** 5 ~ 40 V<sub>DC</sub>
- **Sink Current** 100 mA max. per channel  
Total 1.1 A max.

#### Isolated Counter

- **Channels** 2
- **Resolution** 32-bit
- **Max. Input Frequency** 1 MHz
- **Isolation Protection** 2,500 V<sub>DC</sub>

#### General

- **Bus Type** USB 1.1/2.0
- **I/O Connectors** Onboard screw terminals
- **Dimensions (L x W x H)** 132 x 80 x 32 mm
- **Power Consumption** Typical: 200 mA @ 5 V  
Max.: 300 mA @ 5 V
- **Operating Temperature** 0 ~ 60° C (32 ~ 140° F) (refer to IEC 68-2-1, 2)
- **Storage Temperature** -20 ~ 70° C (-4 ~ 158° F)
- **Storage Humidity** 5 ~ 95% RH, non-condensing (refer to IEC 68-2-3)

### Ordering Information

- **USB-4750** 32-ch Isolated Digital I/O USB Module
- **1960004544** Wallmount Bracket
- **1960005788** VESA Mount Bracket