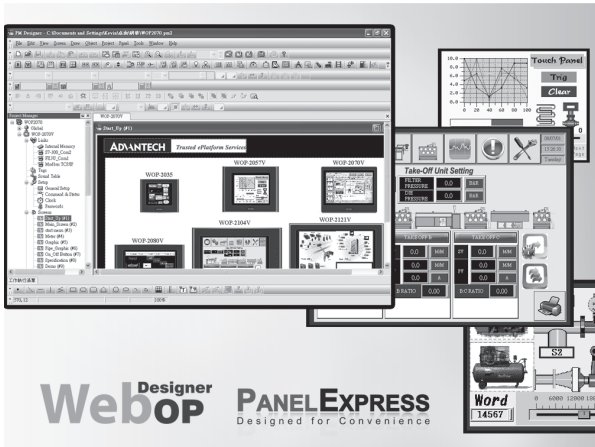


WebOP Designer Panel Express

HMI Runtime Software



Software Features

- Allows users to manage multiple HMI applications in one project
- Allows users to switch multi-language UI dynamically, with Unicode and multilingual screen text supported
- Provides password protection of designs, macros and upload/download operations
- Running various applications on Open Platform with different O.S. - RTOS/WinCE and Windows O.S.
- Link and Control automation controller directly from platform
- Provides index registers for modifying device addresses at runtime
- Collects data from many devices with various methods
- Supports various data acquisition and trend presentation
- Operation log helps the review and investigation of important events
- Flexible runtime download through serial / Ethernet and memory cards.
- Allows to use the USB Memory Sticker for the trouble-free update of the application
- Supports over 300 industrial communication protocols such as SIMATIC S7-1200, BACNet MSTP/BACNet IP etc. and the driver list is growing

Introduction

WebOP Designer is powerful yet intuitive software to create total solutions for WebOP series Human Machine Interface products. WebOP Designer is proven in many application fields and is an easy to use integrated development tool. The features include solution-oriented screen objects, high-end vector graphics, Windows fonts for multi-language applications, recipes, alarms, data loggers and operation logging. WebOP Designer also includes online/offline simulation and other utility programs such as Data Transfer Helper (DTH); recipes editors and text editors.

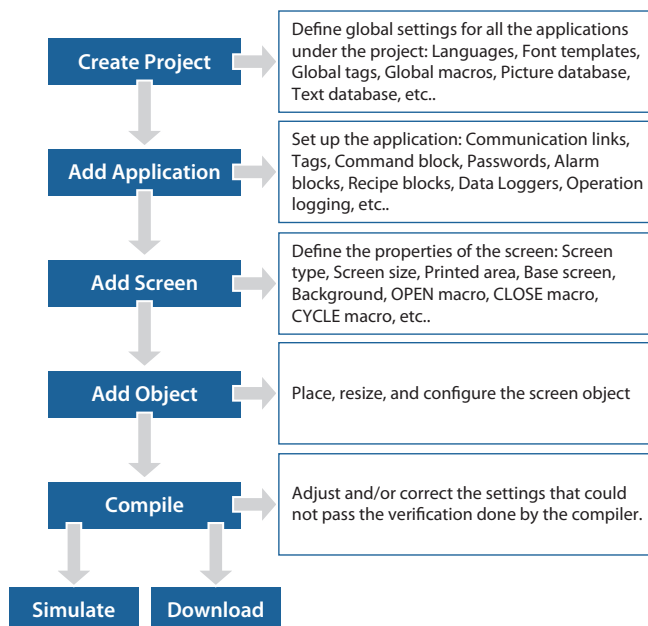
Panel Express runtime, a part of WebOP Designer, guarantees reliability and performance of Open Platform because of the minimum system overhead, high communication data rates, sub-second screen switching, and 24/7 operation. Our fast response software team adds new functions, communication drivers and solutions to the software all the time to meet dynamic needs.

System Requirements

Minimum OS Requirements:

- Windows XP SP2 (for all flavors of XP such as Home, Media Center, Tablet PC)
- Windows Server 2003
- Windows Vista
- Windows 7

Project Development Steps



Feature Details

Global Settings and Resources Sharable to all Applications of the Same Project

- Multi-languages (up to 10 languages)
- Font templates (up to 20 fonts for each language, TrueType fonts supported)
- Picture database (BMP, JPG, GIF, WMF), Sound database (WAV), Text Database
- Global Tags
- Global Macros

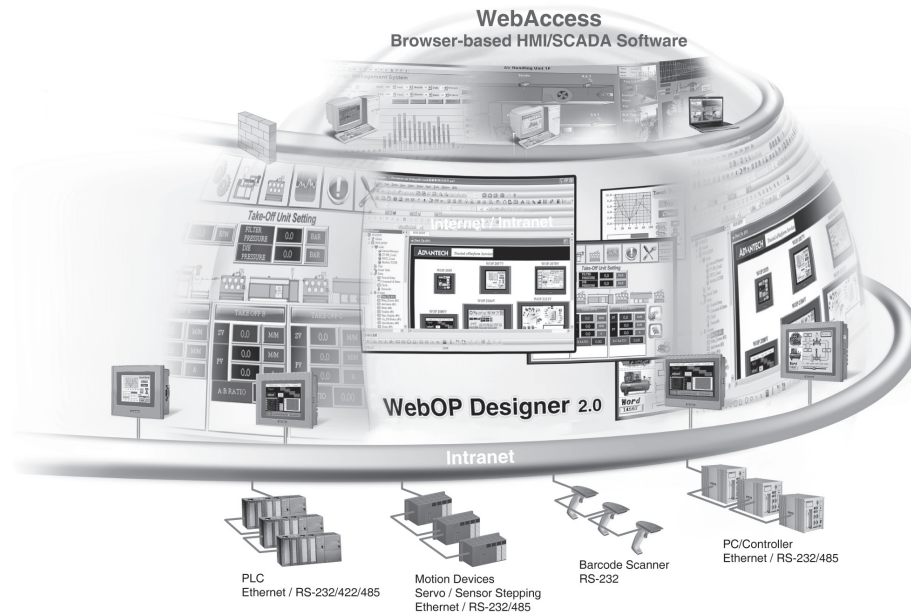
Plenty of Solution-oriented Screen Objects

- For common HMI needs: Buttons, Lamps, Message displays, Numeric displays, Numeric entries, Character displays, Character entries, Time displays, Date displays, Bar Graphs, Meters, etc.
- For animation: Pictures displays, GIF displays, Animated graphics, Dynamic rectangles, Dynamic circles, Pipelines, Circular bar graph, etc. Color of basic graphic objects (text, lines, rectangles, circles, etc.) changeable. Shape and color of buttons and lamps changeable.
- For advanced functions: Line chart, Scatter chart, Recipe selector, Recipe table, Alarm history display, Active alarm display, Alarm count display, Historic trend graph, Historic data table, Historic event table, Historic line chart, Operation log display, Sub-link table, etc.

Communication Links

The WebOP series HMI products can have at most 4 built-in communication ports. The WebOP Designer software allows you to create up to 4-links and 255 sub-links for one application. More than 400 communication drivers allow 1-to-N (one panel to a wide variety of industrial devices) or N-to-1 (multiple panels to one device) connections.

The Panel Express can have at most 16 built-in communication ports. It also allows you to create up to 16-links for 255 sub-links with serial port & 128 sub-links with Ethernet ports in one application.



One Design for all Models

The WebOP Designer software provides the auto resizing function to resize all the objects so they can fit the new screen size when you change the HMI model. It makes the HMI model changes done in seconds.

Easy to Accumulate/Reuse Design Achievements

- Import/Export Function
The WebOP Designer software provides the simple method for importing and exporting data between applications or projects. The data includes Language setting, Font templates, Pictures, Sounds, Text, Tags, Macros, Application, Screen, Alarm messages, Control block and status word settings, etc.
- Object Library
The object library makes configuring, managing and sharing user-defined objects easier. It contains default objects, common objects, object groups and global objects.

Enhanced Intellectual Property (IP) Protection

WebOP Designer strengthens the IP protection by password with different levels. You can set the password to protect project, password table and global macros. You can also use up to 9 levels of passwords to secure the operations and restrict access to the objects. You can choose to prohibit uploading and copying of the panel application stored in the HMI unit.

Recipe

Distinguish from the conventional recipe operations, the WebOP Designer provides complete solutions to deal with recipes:

- Supports up to 16 recipe blocks
- Provides recipe selector for selecting a recipe and recipe table for displaying and modifying recipe data at runtime
- Provides Recipe Editor, an independent executable program, to view and edit recipe data saved in a binary file on PC
- Able to notify a bit when the recipe operations are performed successfully to prevent data loss

Data Collected into a CSV/TXT file

Allows to save/load collected data to/from CSV or TXT files. Those two standard file formats allow the easy manipulation data on PC.

Alarm

The WebOP Designer supports up to 16 discrete alarm blocks and up to 16 analog alarm blocks. It provides alarm history display, active alarm display, alarm count display and alarm marquee to display alarms in the application.

Macros, an easy-to-learn language with simple syntax

Application developers may program their own solutions using the macro commands for:

- Operations that are not supported in a standard object or feature of WebOP Designer
- Sequential, Interactive, Conditional and File operations
- Non-linear data conversions
- Data exchange between two controllers
- Simple communication drivers
- Hard-to-implement tasks in controllers
- Offloading the burden of controllers to boost their performance

Simplified Architecture

- Real time WYSIWYG screen editor, 8 toolbars and screen manager
- Screen overview that shows the relations among screens of the current application
- Link overview that shows the relations among links of the current application
- Object list that shows the screen objects and the associated I/O address of the current screen
- I/O list that shows all the I/O addresses of the project and their owners
- Compiler to verify, optimize, and build the designs
- Online/offline simulation for design verification
- Data Transfer Helper (DTH), an independent executable program, to help you get/update application data through serial port or Ethernet port
- Text Editor for editing all screen texts in multi-languages

Ordering Information

- | | |
|---------------|---|
| ▪ 968WEXP015E | PanelExpress V2.0 1500 tags S/W license (WinCE) |
| ▪ 968WEXP050E | PanelExpress V2.0 5000 tags S/W license (WinCE) |
| ▪ 968WEXP003X | PanelExpress V2.0 300 tags S/W license |
| ▪ 968WEXP015X | PanelExpress V2.0 1500 tags S/W license |
| ▪ 968WEXP050X | PanelExpress V2.0 5000 tags S/W license |
| ▪ 968WEXP1USB | PanelExpress V1.2 S/W USB dongle |
| ▪ 968WEXP2USB | PanelExpress V2.0 S/W USB dongle |