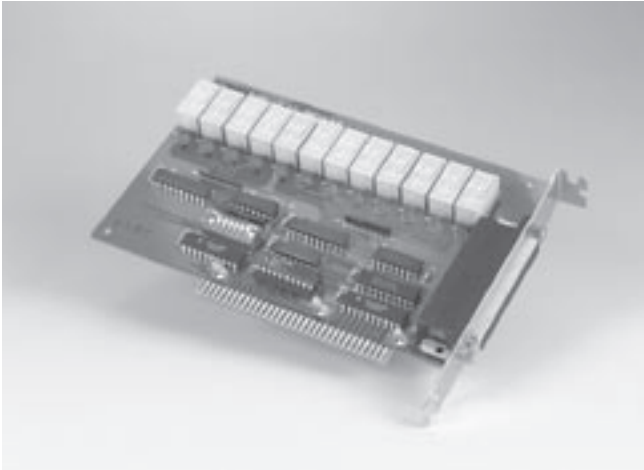


# PCL-735

## 12-ch Relay Actuator Card



### Features

- 12 relay outputs
- LED relay status indicators
- Male DB37 matching connector included
- Relay status readback function

### Introduction

Ideal for applications such as On/Off control or signal switching, the PCL-735 12-channel relay actuator provides 12 SPDT relays on a half-size card.

The On/Off status of each relay is easy to monitor. A red LED next to each relay shows its On/Off status, and the software can read each relay's status. An onboard DB-37 connector provides access to all output channels.

### Specifications

#### Relay Output

- **Channels** 12
- **Relay Type** SPDT, Form C
- **Contact Rating** 2 A @ 30 V<sub>DC</sub>, 1 A @ 125 V<sub>AC</sub>
- **Relay on Time** 5 ms. typical
- **Relay off Time** 5 ms. typical
- **Life Span**
  - > 5 x 10<sup>6</sup> operations @ 30 V<sub>DC</sub> and 2 A
  - > 2 x 10<sup>6</sup> operations @ 30 V<sub>DC</sub> and 1 A
- **Resistance**
  - Contact: 50 M $\Omega$
  - Insulation: 1 G $\Omega$  @ 500 V<sub>DC</sub> min.

#### General

- **Bus Type** ISA
- **I/O Connectors** 1 x 37-pin D-type female
- **Dimensions (L x H)** 155 x 100 mm (6.1" x 3.9")
- **Power Consumption**
  - Typical: +5 V @ 280 mA
  - Max: +12 V @ 200 mA
- **Operating Temperature** 0 ~ 60° C (32 ~ 140° F)
- **Storing Temperature** -20 ~ 70° C (-4 ~ 158° F)
- **Storing Humidity** 5 ~ 95% RH, non-condensing (refer to IEC 68-2-3)

### Ordering Information

- **PCL-735** 12-ch Relay Actuator Card
- **PCL-10137-1** DB37 cable assembly, 1 m
- **PCL-10137-2** DB37 cable assembly, 2 m
- **PCL-10137-3** DB37 cable assembly, 3 m
- **PCLD-880** Screw terminal board
- **ADAM-3937** DB37 wiring terminal for DIN-rail mounting