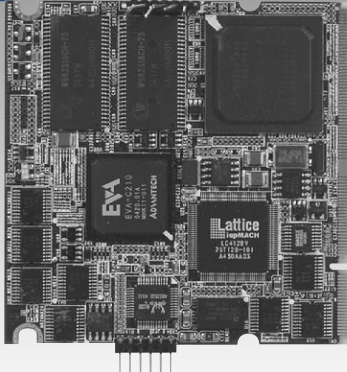


# SOM-A2708 Series System On Module

Intel XScale® PXA270  
(Bulverde CE), Advantech EVA-C210  
& Windows® CE .NET 5.0

Preliminary



CE FCC

## Features

- SOM-A2708 is SOM-A2558's enhanced version. Pin definitions are fully compatible with SOM-A2558
- 68 mm x 68 mm x 6.8 mm compact size module
- Power management ready support with normal, idle, suspend, and off modes
- OS-ready package for Windows® CE .NET / Linux installation
- Local bus (AMI Bus), comprehensive I/O interfaces: PS2 port, Ethernet, USB host, and PCI I/F support
- Boot option by onboard flash or CFC for easy maintenance and cost saving
- Provides a variety of reconfiguration options to fulfill specific requirements
- Design-in Kit package is available for complete design-in support

## Introduction

### Mobile computing, I/O Intensive SOM

Using a dual-chip design principle, SOM-A2708 series System On Module (SOM) integrates both Intel XScale® PXA270 (Bulverde CE) ultra low power CPU design, with Advantech's EVA-C210 companion chip, achieving the aim of using the lowest cost integrated controllers, with the most I/Os, such as touch screen, CompactFlash®, PCMCIA, SD/MMC, USB Host/USB OTG, USB Client, PCI Bus Rev. 2.2, 10/100 based-T Ethernet, PS/2 ports, RS-232 and RS-485.

### Design-in Package Ensures Fast, Risk-free Implementation

The comprehensive design-in package provides developers with a complete design-in kit, detailed design guide documentation, as well as the Windows CE Board Support Package (BSP) by project request and a set of testing tools for custom target platform image building.

Four supporting mechanisms are included in design-in package:

- **Reference Kit:** Provides developers with a complete design-in suite reference for application evaluation/development and Customer Solution Board (CSB) development
- **LCD Kit:** A full range of certified LCD kits in different sizes and types for custom fit target CSB and applications
- **Design-in Zone:** Assists customers own CSB development by providing direct and professional technical support
- **Design-in Forum:** A series of worldwide SOM Design-in Forums/Seminars/Conferences through various types of activities/formats, giving developers an opportunity and channels to receive and share the most updated information

## Specifications

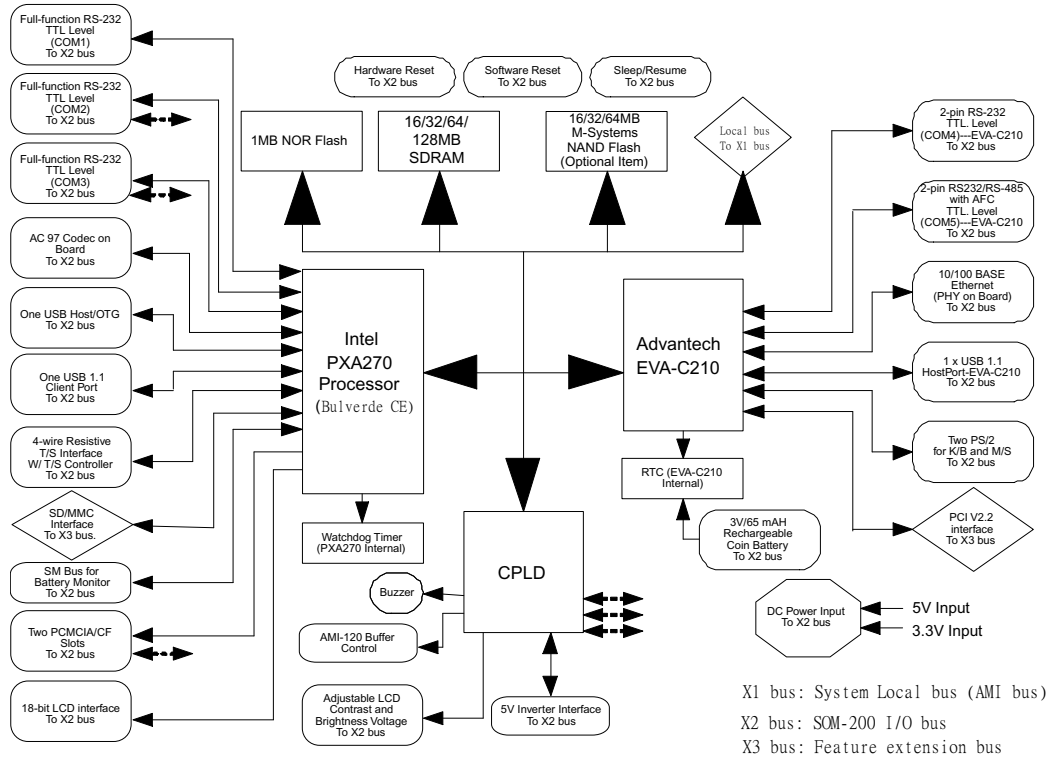
Func.	Model	SOM-A2708 series	Reconfiguration Option
CPU		Intel XScale PXA270 520 MHz	312/416/520 MHz
I/O Enhance Chip		Advantech EVA-C210	-
Graphic Chip		PXA270 built-in	-
System Memory (SDRAM)		64MB SDRAM	16/32/64/128 MB
Boot loader Flash		1MB NOR Flash	-
Onboard Flash (Image & Storage)		OMB	0/16/32/64 MB
OS Image Storage		Thru CFC	-
AMI Bus (X1 bus)		100-pin B2B conn w/ buffer drive	Yes
Feature Extension Bus (X2 Bus)		100-pin B2B conn (the conn. Include PCI, ZV & SD/MMC I/F)	Yes
Watch Dog		PXA270 Built-in	-
RTC		EVA-C210 Built-in	-
Serial Port		3 x Full RS-232 (TTL); 1 x 2-wires RS-232 (TTL); 1 x 3-wires for RS-232 or RS-485	-
Ethernet		1 x 10/100Base-T	-
PCMCIA/ Compact Flash		2 Slots PCMCIA/CF or 1 x PCMCIA & 1 x CF	-
USB Host/OTG		2 x USB 1.1 Host	2 x USB 1.1 Host 1 x USB 1.1 Host & 1 USB OTG
USB Client		1 x USB 1.1 Client	-
SD/MMC		Yes (support 4 bit memory/I/O mode)	-

PS/2	2 x Ch for K/B & MS	-
LCD ( TTL level)	Up to VGA LCD 18-bit TFT/STN/DSTN	-
T/S	4-wire resistive	5-wire resistive/ SPI interface I/F
Audio Codec	AC'97 codec on board. Support Mic-in, Line-in, Line-out speaker-out	Yes
Buzzer Control	Yes	-
SM Bus	Yes	-
Hardware Reset	Yes	-
Software Reset	Yes	-
Resume	Yes	-
OS Support	WinCE 5.0	Embedded Linux (customers request)
Power Input	3.3 V/5 V	-
Operating Temperature	0 ~ 60° C	Support Advantech Phoenix product golden level: -20° C ~ 80° C platinum level: -40° C ~ 85° C
Operating Humidity	0% ~ 90%	-
Certification	FCC/CE	-
Form Factor	68 mm x 68 mm x 6.8 mm	-

Ps: 1. "Reconfiguration Option" column provides the user with many choices. "-": means no option. If standard product SOM-A2708 specification does not fit developer's requirement, developer can contact Advantech for SOM-A2708 reconfiguration.

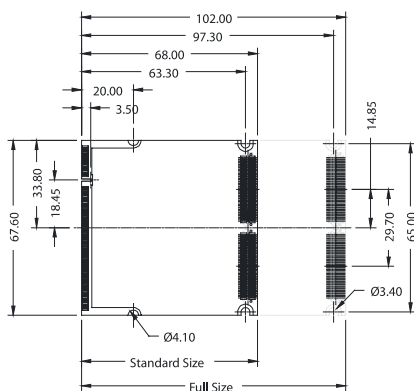
# SOM-A2708 Series System On Module

## Board Diagram



## Mechanical dimensions

Unit: mm



## Ordering Information

### SOM-A2708 Design-in Package

#### ■ SOM-ADK2708-B00 (Item for design-in)

SOM-A2708 series Design-in Kit

(\*\* without panel bundle, please order suitable LCD kit)

#### ■ LCD-A057-STQ1-0 (Optional item)

5.7" STN QVGA LCD kit. The kit includes 4-wires resistive T/S, inverter, cables and installation guide

#### ■ LCD-A064-TTV1-0 (Optional item)

6.4" TFT VGA LCD kit. The kit includes 4-wires resistive T/S, inverter, cables and installation guide

### SOM-A2708 SOM alone

#### ■ SOM-A2708-540B0

PXA270, 520MHz, EVA-C210 I/O extension chip, 64MB SDRAM, 1MB boot flash, X1 and X3 extension bus connectors on board (Minimum 20 pcs/per order)

## Applications

- Mobile, battery-powered device platform with multi-I/O I/F demand
- Compact diagnostic, monitoring, control equipment or HMI terminal
- Outdoor, fully enclosed, intelligent remote I/O controller
- LCD-based vehicle/telemetric platform for navigation & communication