

RIO-3302/RIO-3302S

6U CompactPCI™ Rear Transition card

Startup Manual

Packing List

Before you begin installing your card, please make sure that the following materials have been shipped:

- One RIO-3302 (or RIO-3302S) CompactPCI™ rear transition card
- One warranty certificate
- One startup Manual
- One CD disc and manual (in PDF format)

If any of these items are missing or damaged, contact your distributor or sales representative immediately.

Specifications

The RIO-3302/RIO-3302S is a 6U-sized CompactPCI rear transition board. It provides access to the rear panel of the I/O function on Advantech's CompactPCI CPU board.

SCSI Function

- **Controller:** Adaptec® AIC-7892
- **Bus:** PCI 64-bit / 33MHz
- **Channel:** single SCSI channel
- **Data transfer rate:** The data channel DMA engine in the AIC-7892 supports data transfer rates up to 160MB/s on a wide(16-bit) SCSI using LVD SCSI I/Os.

- **Termination:** On-board terminators provided

Standard functions

- **Ethernet:** Two LAN ports with RJ-45 connectors
- **VGA connector:** One DB-15 VGA connector
- **Serial port:** Two DB-9 RS-232 ports
- **USB interface:** One USB connectors

For more information on the RIO-3302 (or RIO-3302S) and other Advantech products, please visit our website at:

<http://www.advantech.com>

For technical support and service, please visit our support website at:

<http://support.advantech.com>

This manual is for the RIO-3302 (or RIO-3302S) Rev. A1.

Part No. 2002330210

1st. Edition

Printed in Taiwan

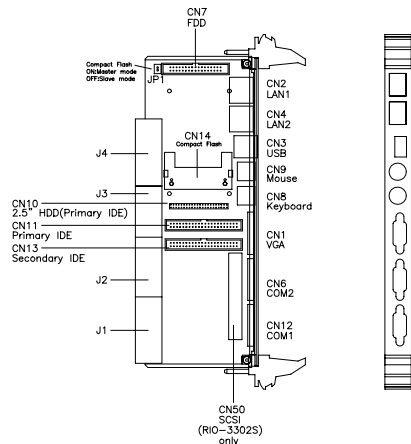
October 2002

Specifications (Continued)

- **EIDE interface:** Two connectors for IDE channels (Primary and Secondary channels)
- **FDD interface:** Supports one on-board slim-type floppy connector.
- **CompactFlash? interface:** Supports one on-board CompactFlash? socket
- **Keyboard connector:** One 6-pin mini-DIN connector on rear panel
- **Mouse connector:** One 6-pin mini-DIN connector on rear panel

Indicator and Connector Location

The RIO-3302/RIO-3302S provides jumpers and connectors for users specific applications.



RIO-3302/RIO-3302S Connector and jumper locations

RIO-3302/3302S connector and jumper descriptions	
Label	Function
JP1	CompactFlash™ master/slave selection
CN1	VGA connector
CN2	LAN 1 connector
CN3	USB 1 connector
CN4	LAN 2 connector
CN6	COM2 port
CN7	Floppy disk connector
CN8	PS/2 keyboard connector
CN9	PS/2 mouse connector
CN10	44-pin IDE channel-1 connector
CN11	IDE channel-1 connector
CN12	COM1 port
CN13	IDE channel-2 connector
CN14	50-pin CompactFlash™ connector
CN50	SCSI internal connector (RIO-3302S only)

Driver installation

Device drivers and utilities for DOS, Windows2000/95/98/NT and SCO UNIX are included in the utility CD-ROM disc. The utility user's guide and installation instructions are provided in the utility CD-ROM disc. The instructions are located in the directory \RIO3302S\SCSI .