

# RAID-410-IDE

## 4U SCSI to IDE RAID Subsystem



### Features

- 19" rackmount 4U-high chassis
- Host independent data protection for all popular operating systems
- Supports RAID levels 0, 1, 0+1, 3, and 5
- Ultra2 LVD host port
- Cableless backplane design
- Supports up to eight 3.5" hot-swappable ATA hard drives

### Introduction

#### Host Independent RAID Solution

The RAID-410-IDE is an intelligent Ultra2 SCSI host to IDE drive ready RAID subsystem supplying fault tolerant data protection and 100% transparency to the host operating system. The RAID-410-IDE is a full-featured RAID array supporting RAID levels 0, 1, 0+1, 3, and 5. For higher data throughput rates and extended SCSI cable lengths, the RAID-410-IDE contains an Ultra2 SCSI host interface that provides data rates up to 80 MB/sec.

#### High Performance and Lower Cost of Ownership

IDE hard disks are more affordable than SCSI drives and offer compatible data throughput and availability. The RAID-410-IDE's high performance comes from an embedded controller with a 64-bit processor and 64 MB cache. It also supports SCSI features like Tagged Command Queuing which allow the embedded controller and the host operating system to coordinate command executions for maximum system efficiency.

#### High Data Availability, Hot-Swap, Auto-rebuild and Hot-spare

The RAID-410-IDE comes with 8 hot-swappable drive trays accommodating 3.5" ATA drives. The hot-spare feature allows the controller to automatically start rebuilding the data that was in a failed drive using a hot standby drive. For an additional level of reliability, the subsystem contains a backplane design which eliminates the problems associated with cable connections.

#### Manageability and System Monitoring

With a menu driven front panel LCD display, a terminal serial port, real time drive status indicators and a Java-based GUI interface, the RAID-410-IDE delivers a variety of ways to be managed and monitored.

Eight 3.5" hot-swappable IDE Ultra hard drives

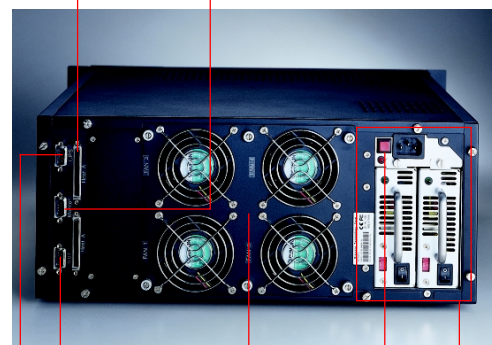


Security locks

RAID LCD

Environment LCD

Ultra2 LVD host ports      Monitor port



Modem port

Four cooling fans

Redundant power supply

UPS port

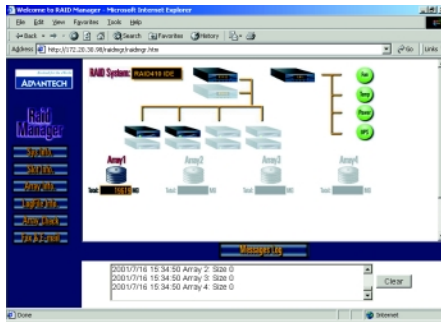
Power failure alarm reset

CE FCC

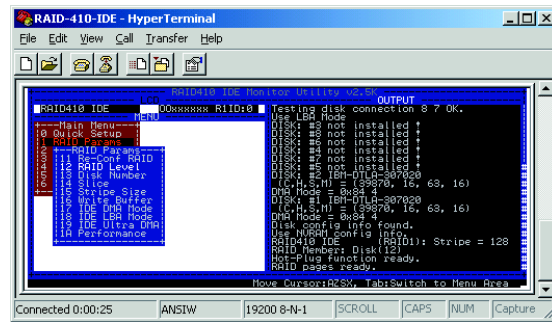
ADVANTECH

• All brand names and registered trademarks are the property of their respective owner  
• All specifications are subject to change without notice

Date of Publication: 2003-07-14



JAVA-based RAID Manager GUI



RAID Manager GUI via RS-232

## Specifications

Processor System	CPU	Intel® i960RN 64-bit	
Cache Memory	Max. Capacity	128 MB (64 MB installed)	
Channel		Host	Drive
	Number	1	1
	Interface	SCSI Ultra2, LVD	IDE ATA 100
	Max. Data Transfer Rate	80 MB/sec.	--
Drive Bay	3.5" HDD	8	
	Max. Capacity	1280 GB (160 GB x8)	
	Drive Form Factor	1" height (low profile)	
	Drive Interface	IDE ATA 100	
	Backplane Board	Yes	
	Security Lock/Door	Yes	
RAID	Level	0, 1, 0+1, 3, 5	
	Auto Rebuilding	Yes	
	Hot-spare	Yes	
	On-line Expansion	Yes	
	Command Queuing	Up to 255 commands	
Cooling	Fan	4	
Management	Control & Monitoring	Web-based GUI management software, text-based RAID manager software via RS-232	
	Alert Notification	Fax, e-mail, pager	
	Fault Detection System	HDDs, fan, temperature, power supply	
	Control	Power switch and alarm mute switch	
	Indicator	LCD/LED for power, fan, temperature, and HDDs (w/HDD failure indicators)	
	UPS Connection	Yes	
Power Supply	Watt	250 W (1+1 redundant, 250 W/each)	
	Input	AC 115 V	AC 230 V
		2.5 A	5 A
		50 ~ 60 Hz	50 ~ 60 Hz
Environment		Operating	Non-Operating
	Temperature	0 ~ 40 °C (32 ~ 104 °F)	-20 ~ 60 °C (-4 ~ 140 °F)
	Humidity	5 ~ 95 %, non-condensing	5 ~ 95 %, non-condensing
Physical	Dimensions (W x H x D)	482 x 176 x 449 mm (19" x 6.9" x 17.6")	
	Weight	17 Kg (37.5 lb)	

CompactPCI Enclosures 1

CompactPCI Boards 2

CompactPCI Peripherals 3

Blade Servers 4

Network Appliances 5

e-Server Systems 6

Storage Subsystems 7

Industrial Computer Chassis 8

Full-sized CPU Cards 9

Passive Backplanes 10

Industrial Computer Peripherals 11

## Ordering Information

Part Number	Descriptions
RAID-410-IDE	4U SCSI to IDE RAID subsystem

For More Information

www.advantech.com/nc

Enter