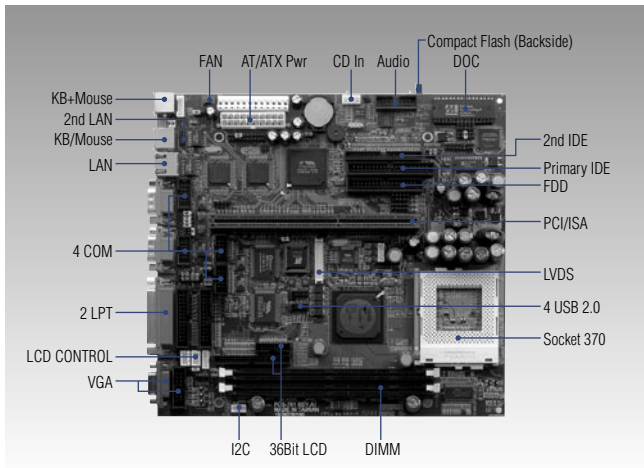


POS-761

Socket 370 LPX SBC w/ VGA, LCD, LAN



Specifications

General

- **CPU** Socket 370 Pentium III/Celeron processor up to 1.26 GHz (Tualatin)
- **2nd Cache Memory** 256 KB/512 KB on Pentium III and Celeron at 256 KB
- **System Chipset** VIA® 8606/TwisterT, VT82C686B
- **BIOS** AWARD® 256 KB Flash BIOS
- **System Memory** 2 x SDRAM DIMM, Max. 1 GB
- **Power Management** APM 1.1
- **SSD** Supports CompactFlash® Card, DiskOnChip®
- **Watchdog Timer** 1 ~ 62 sec, system reset or IRQ11
- **Expansion Interface** 1 x PCI/ISA slot, 1 x mini PCI slot (Type I/II)
- **Battery** Lithium 3 V/220 mA

I/O

- **I/O Interface** 2 x EIDE (40-pin Ultra DMA 66 & 100 and 44-pin Ultra DMA 33), 1 x K/B, 1 x mouse, 1 x RS-232/422/485, 3 x RS-232, 1 x LPT
- **USB** 4 x USB 2.0
- **Audio** VIA VT82C686, supports CD-in
- **IrDA** 115.2 kbps, IrDA 1.0 compliant
- **GPIO** 2 TTL digital out, 4 TTL digital in

Ethernet

- **Chipset** Realtek RTL8139C (optional: Intel 82540)
- **Speed** 10/100Base-T (optional: 1000Base-T)
- **Interface** 1 x RJ-45
- **Standard** IEEE 802.3, IEEE 802.3u, IEEE 802.3z/ab

Features

- Supports Socket 370 for Intel® Celeron®/Pentium® III (Tualatin) processors
- AGP 4X VGA/LCD & LCD controller up to 1024 x 768 supporting 36-bit XGA TFT LCD panel
- Four serial ports, three RS-232 and one RS-232/422/485
- USB interface compliant with USB Rev. 2.0
- Mini PCI socket for optional modem
- I2C, DI/O interfaces
- System overheat temperature control
- 63-level watchdog timer, jumperless online support

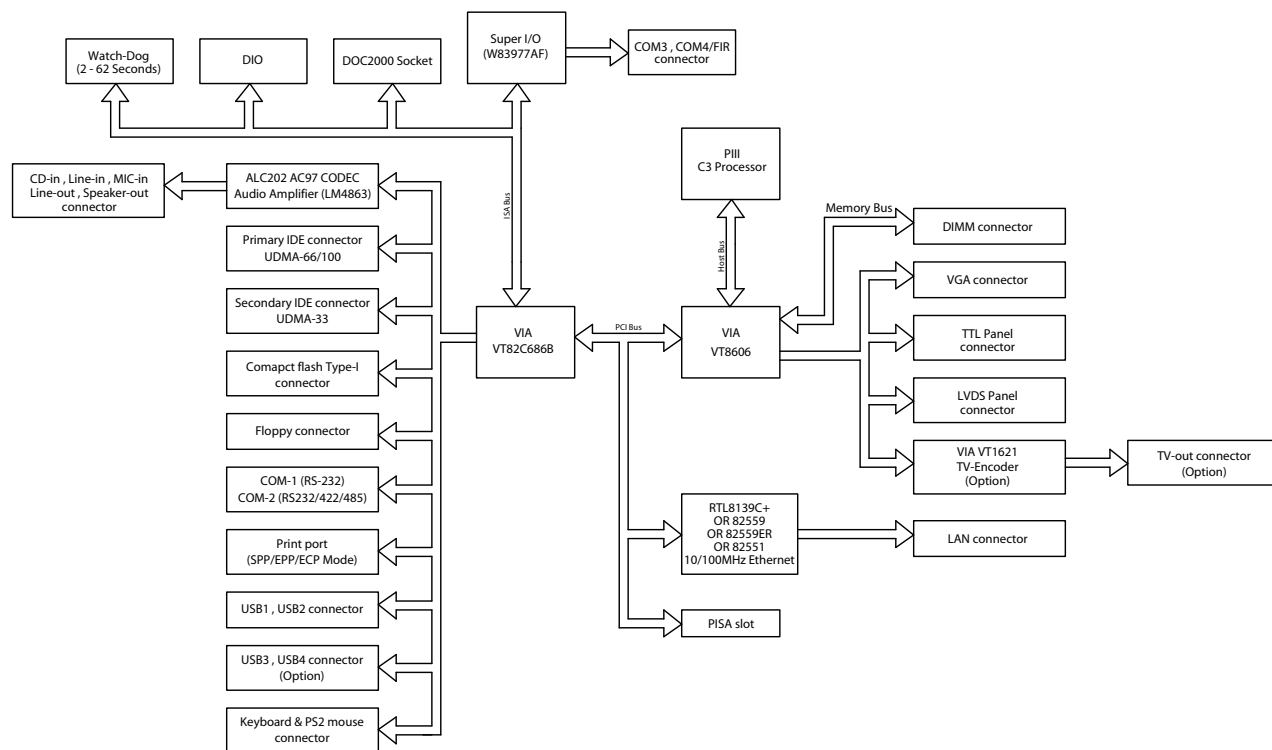
Display

- **Chipset** VIA® VT8606T
- **Memory Size** Optimized Shared Memory Architecture, supports 8/16/32 MB frame buffer using system memory
- **Resolution** 1600 x 1200
- **LCD Interface** 36-bit DSTN/TFT

Mechanical and Environmental

- **Dimension (L x W)** 220 x 235 mm (8.7" x 9.25")
- **Weight** 0.56 kg (weight of total package)
- **Operating Temperature** 0 ~ 60° C (32 ~ 140° F), operation
- **Operating Humidity** 0% ~ 90% relative humidity, non-condensing
- **Power Supply Voltage** +5 V ±5%, +12 V ±5%
- **Power Consumption** Typical: 4.4 A @ 5 V, 0.3 A @ 12 V (Celeron 1.2 GHz, SDRAM 256 MB)

Board Diagram



Packing List

- 1 x POS-761 SBC
- 1 x FDD cable (p/n: 1701340700)
- 1 x HDD cable (p/n: 1701400452)
- 2 x Serial cables (p/n: 1701100300)
- 1 x Audio cable (POS-761FA) (p/n: 1700160160)
- 1 x Jumper pack (p/n: 9689000068)
- 1 x Startup manual
- 1 x Utility CD

Optional Accessories

- POS-102-0000E 4-slot PCI/ISA riser card
- POS-103-00A1E 3-slot ISA riser card
- 1700100170 17.5 cm USB cable (2.54 mm)
- 1700100301 30 cm USB cable (2.54 mm)
- 1759202400 Fan w/ heatsink for Socket 7/370 processor
- 1759200340 Fan w/ heatsink for 700 MHz Pentium III or above Socket 370 processor

Ordering Information

Part No.	TTL	10/100	USB	RS-232	RS-232/422/485	GPIO	LPT	CF	EISA	Audio
POS-761F-00A1E	Yes	1	4	3	1	2 in, 4 out	2	Yes	1	-
POS-761FA-00A1E	Yes	1	4	3	1	2 in, 4 out	2	Yes	1	Yes