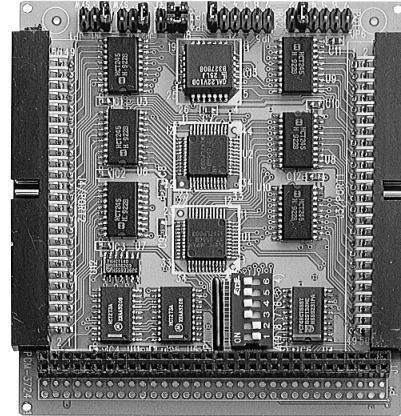
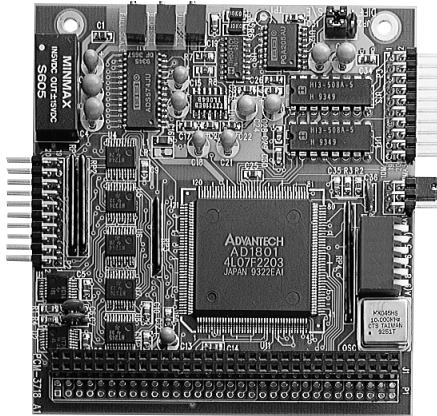


PCM-3718H/3718HG PCM-3724

12-bit DAS Module with
Programmable Gain
48-ch Digital I/O Module



PCM-3718H/3718HG

Features

1. Software programmable gain value for each analog input channel
2. Data transfer by program control, interrupt or DMA

Specifications

Analog Input:

- **Channels:** 16 single-ended or 8 differential inputs
- **Resolution:** 12 bits
- **Sampling rate:** 100 kS/s max. with DMA transfer
- **PCM-3718 Input Range:**
 - Bipolar: $\pm 10, \pm 5, \pm 2.5, \pm 1.25, \pm 0.625$
 - Unipolar: $0-10, 0-5, 0-2.5, 0-1.25$
- **PCM-3718HG Input Range:**
 - Bipolar: $\pm 10, \pm 5, \pm 1, \pm 0.5, \pm 0.1, \pm 0.05, \pm 0.01, \pm 0.005$
 - Unipolar: $0-10, 0-1, 0-0.1, 0-0.01$

Digital Input/Output:

- **Channels:** Two 8-bit TTL-level Digital I/O channels
- **Input voltage:** Logic 0: 0.8V max.
Logic 1: 2.0V min.
- **Output voltage:** Logic 0: 0.33V max. @ 6mA (sink)
Logic 1: 3.84V min. @ 6mA (source)

General:

- **Power Consumption:** 180mA@+5V (typical); 400mA@+5V (max.)
- **Digital I/O connector:** 20-pin post headers for I/O connection
- **Analog input connector:** 20-pin post header for I/O connection
- **MTBF:** Over 235,346 hrs @ 25°C, ground, fix environment

Ordering information

- PCM-3718H/3718HG:** 12-bit DAS Module with Programmable Gain, user's manual and driver CD-ROM. (cable not included)
- PCL-10120-1/2:** 20-pin flat cable, 1/2m
- ADAM-3920:** 20-pin Flat Cable Wiring Terminal for DIN-Rail Mounting
- PCLD-780:** Screw-Terminal Board for 20-pin Flat Cable

PCM-3724

Features

1. 48 Digital I/O channels.
2. Channels simulate 8255 PPI mode 0.
3. Interrupt triggering, rising/falling edge.
4. Output status readback.
5. Pin-compatible with Opto-22 I/O module racks.

Specifications

Digital I/O:

- **Channels:** 48 Digital I/O channels
- **Throughput:** 300KBps typical; 400KBps max.
- **Input voltage:**
 - Logic 0: 0.8V max.
 - Logic 1: 2.0V min.
- **Output voltage:**
 - Logic 0: 0.5V max. @ 24 mA (sink)
 - Logic 1: 2.0 min. @ 15 mA (source)

General:

- **Power Consumption:** 0.5 A @ +5 V (typical); 0.8 A @ +5 V (max.)
- **Digital I/O connector:** Two 50-pin post headers
- **MTBF:** over 500,000 hrs @ 25°C, ground, fix environment

Ordering information

- PCM-3724:** 48-channel Digital I/O Module, user's manual and driver CD-ROM. (cable included)
- PCL-10150-1.2:** 50-pin flat cable, 1.2m
- ADAM-3950:** 50-pin Flat Cable Wiring Terminal for DIN-Rail Mounting
- PCLD-785B:** 24-ch Relay Output Board
- PCLD-782B:** 24-ch Opto-Isolated Digital Input Board

