

## PCM-3712

## PCM-3718H/HG

## PCM-3723

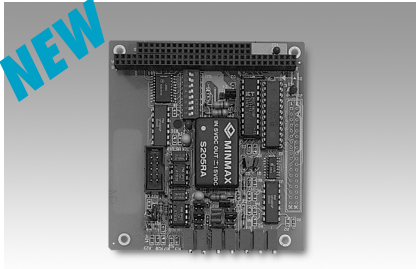
## 2-channel Analog Output Module

## 12-bit Multifunction Module with Programmable Gain

## 24-bit DIO & 3-ch Counter/Timer Module

### PCM-3712

#### 2-channel Analog Output Module



#### Specifications

- **Output of Channels:** 2
- **Voltage Range Unipolar:** 0 to 5 V, 0 to 10 V
- **Bipolar:**  $\pm 2.5$  V,  $\pm 5$  V,  $\pm 10$  V
- **Current Range:** 4 ~ 20 mA
- **Output Current Range:**  $\pm 5$  mA
- **Impedance:** 0.1 max./0.02 typ.
- **Resolution:** 12-bit
- **Nonlinearity:**  $\pm 1$  LSB
- **Differential Nonlinearity:**  $\pm 1/2$  LSB
- **System Accuracy:**  $\pm 0.025\%$  FSR (Voltage)  
 $\pm 0.05\%$  FSR (Current)
- **Dynamic Performance:** 5 V step: 16  $\mu$ s  
0.3V/ $\mu$ s typ. (Voltage)  
1.2mA/ $\mu$ s (Current)
- **Settling Time to 1/2 LSB:**  
10 V step: 33  $\mu$ s
- **Slew Rate:** 0.3 V/ $\mu$ s typ. (Voltage)  
1.2 mA/ $\mu$ s (Current)
- **D/A Converter Single Channel:** 33 KHz bit resolution

#### Features

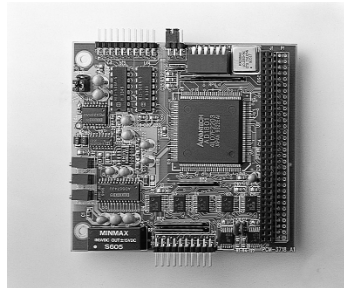
- 2 channels analog output module
- 0 to 5V, 0 to 10V, -2.5V to +2.5V, -5V to +5V, -10V to +10V, or 4 to 20mA output range
- 12-bit resolution

#### Ordering Information

- PCM-3712:** 2-channel analog output module
- ADAM-3909:** DB-9 cable wiring for DIN-rail mounting

### PCM-3718H/HG

#### 12-bit Multifunction Module with Programmable Gain



#### Specifications

##### Analog Input

- **Channels:** 16 single-ended or 8 differential inputs
- **Resolution:** 12 bits
- **Input Range:**  
Bipolar:  $\pm 10$ ,  $\pm 5$ ,  $\pm 2.5$ ,  $\pm 1.25$ ,  $\pm 0.625$   
Unipolar (PCM-3718H): 0 ~ 10, 0 ~ 5, 0 ~ 2.5, 0 ~ 1.25
- **Input Range:**  
Bipolar:  $\pm 10$ ,  $\pm 5$ ,  $\pm 1$ ,  $\pm 0.5$ ,  $\pm 0.1$ ,  $\pm 0.05$ ,  $\pm 0.01$ ,  $\pm 0.005$   
Unipolar (PCM-3718HG): 0 ~ 10, 0 ~ 1, 0 ~, 0 ~ 0.01

##### Digital input/output

- **Channels:** two 8-bit TTL-level Digital I/O channels
- **Input Voltage:** Logic 0: 0.8 V max.  
Logic 1: 2.0 V min.
- **Output Voltage:**  
Logic 0: 0.33 V max. @ 6mA (sink)  
Logic 1: 3.84 V min. @ 6mA (source)
- **Power Requirements:** +5 V,  $\pm 5\%$  tolerance on power supply
- **Size/Weight:** 96 mm x 90 mm (3.8" x 3.5"), 0.084 kg (0.185 lb)
- **Temperature:**  
Operating: 0 ~ 60°C (32 ~ 140°F)  
Storage: -40 ~ 85°C (-40 ~ 185°F)
- **Operating Humidity:** 0% ~ 90% relative humidity, non-condensing

#### Features

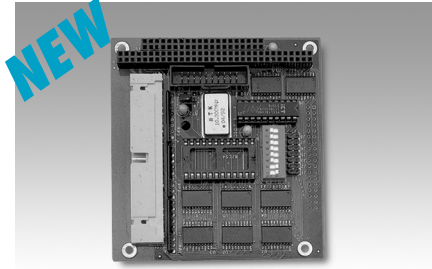
- 16 single-ended or 8 differential analog inputs
- 12-bit A/D converter, up to 100 KHz sampling rate with DMA transfer
- Two 8-bit digital input/output TTL level channels

#### Ordering Information

- PCM-3718H/3718HG:** 12-bit multifunction module with programmable gain (cable not included)
- ADAM-3920:** 20-pin flat cable wiring terminal for DIN-Rail mounting
- PCLD-780:** Screw-terminal board for 20-pin flat cable
- PCL-10120-1/2:** 20-pin flat cable, 1/2 m

### PCM-3723

#### 24-bit DIO & 3-ch Counter/Timer Module



#### Specifications

##### Input and Output

- **Input/Output Lines:** 24
- **Configuration:** TTL/DTL compatible
- **Operation Mode:** emulates 8255 mode 0
- **Input/Output:** pair
- **Improved Noise Margins:** hysteresis,  $V_{T+} - V_{T-} = 0.4$ (type)

##### Programmable Counter/Timer

- **Type:** 82C54
- **Number of Counters:** 3 independent 16-bit counters
- **Frequency Range:** DC to 10MHz
- **Mode:** 6 programmable mode
- **Input/Output Level:** TTL, DTL, CMOS compatible

#### Features

- 24 TTL/DTL digital I/O lines
- Easy interface to high level signal through relay or SSR panel
- Three 8-bit groups independently selectable for I/O
- Three programmable counter/timer channels
- Internal or external power selection

#### Ordering Information

- PCM-3723:** 24-bit DIO & 3-channel counter/timer module
- ADAM-3950:** 50-pin flat cable wiring terminal for DIN-rail mounting
- ADAM-3920:** 20-pin flat cable wiring terminal for DIN-rail mounting
- PCL-10120-1/2:** 20-pin flat cable, 1/2 m
- PCL-10150-1.2:** 50-pin flat cable, 1.2 m

WebLink  
WebOT 1

IPPC &  
AWS 2

TPC 3

FPM 4

IPC 5

UNO-  
2000 6

ICOM 7

DA&C 8

cPCI 9

ADAM-  
3000 10

ADAM-  
4000 11

ADAM-  
5000 12

ADAM-  
6000 13

ADAM-  
8000 14

Industrial  
Converters 15

VBOX 16

Software 17

Index