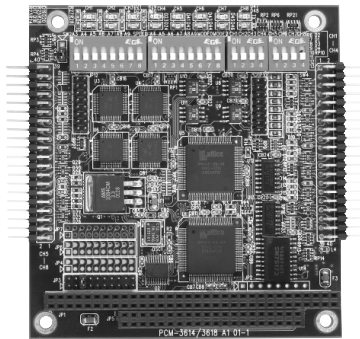


PCM-3618
PCM-3640/3641
PCM-3660

8-port RS-422/485 High-Speed Module
4-port RS-232 High-Speed Module
Jumperless Ethernet Module



PCM-3618
8-port RS-422/485
High-Speed Module

Features

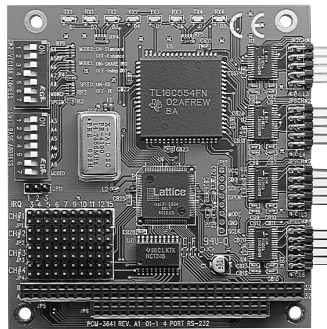
- Eight Independent RS-422/485 serial ports
- Automatic RS-485 data flow control
- Transmission speeds up to 921.6 Kbps
- Shared IRQ settings for each ports
- LED indicators: TX, RX

Specifications

- **Number of Ports:** 8
- **I/O Address:** 0 x 000 ~ 0 x 3F8
- **IRQ:** 3, 4, 5, 6, 7, 9, 10, 11, 12, 15
- **Data Bits:** 5, 6, 7, 8
- **Stop Bits:** 1, 1.5, 2
- **Parity:** none, even, odd
- **Speed (bps):** 50 ~ 921.6 K
- **Connectors:** eight male DB-9
- **RS-422 Signal Support:** TxD+, TxD-, RxD+, RxD-, CTS+, CTS-, RTS+ and RTS-
- **RS-485 Signal Support:** DATA+, DATA-, CTS+, CTS-
- **Surge Protection:** 1 KV
- **Built-in Termination Resistor:** 120 Ω
- **Power Consumption:** +5 v @ 650 mA
- **Temperature:**
 Operating: 0 ~ 65° C (IEC-68-1-1, 2)
 Storage: -25 ~ 80° C (-13 ~ 176° F)
- **Operation Humidity:** 0% ~ 90% relative humidity, non-condensing

Ordering Information

- PCM-3618-A**
8-port RS-422/485 High-Speed module



PCM-3640/3641
4-port RS-232 High-Speed Module

Features

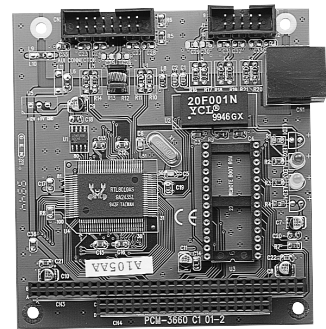
- Transmission speeds up to 460 Kbps (PCM-3641)
- Shared IRQ settings for each of 4 RS-232 ports (PCM-3641)
- Standard PC ports: COM1, COM2, COM3, COM4 compatible
- Supports Windows 95/98/NT/2000/ME/CE, Linux (ICOM utility)

Specification

- **Bus Interface:** PC/104
- **Number of Ports:** 4
- **I/O Address:** 0 x 0200 ~ 0 x 03F8
- **IRQ:** 3, 4, 5, 6, 7, 9, 10, 11, 12, 15
- **Data Bits:** 5, 6, 7, 8
- **Stop Bits:** 1, 1.5, 2
- **Parity:** none, even, odd
- **Speed (bps):** 50 ~ 460.3 K (PCM-3641)
50 ~ 115.2 K (PCM-3640)
- **Connectors:** four DB-9 male
- **Data Signals:** TxD, RxD, RTS, CTS, DTR, DSR, DCD, RI, GND
- **Power Consumption:**
+5 V @ 200 mA (Typical);
+5 V @ 250 mA (Max.)
- **Operating Temperature:** 0 ~ 65° C (refer to IEC-68-1-1, 2)
- **Storage Temperature:** -25 ~ 80° C
- **Temperature:**
Operating: 0° ~ 65° C (32° ~ 149° F)
Storage: -40 ~ 85° C (-40 ~ 185° F)
- **Operating Humidity:** 0 % ~ 90 % relative humidity, non-condensing

Ordering Information

- PCM-3641-A**
4-port RS-232 High-Speed module
- PCM-3640-A**
4-port RS-232 module



PCM-3660
Jumperless Ethernet
Module

Features

- Automatically detects 8-bit or 16-bit
- AUI connector supports external MAUs
- On-board 32 K byte buffer for multi-package

Specifications

- **I/O Address:** 200, 220, 240, 260, 280, 2A0, 2C0, 300, 320, 340, 380, 3A0
- **Interrupt Level:**
IRQ 3, 4, 5, 9, 10, 11, 12 or 15
- **Boot ROM Address:** C0000, C8000, D0000, or D8000H
- **Data Bus:** 8-bit, 16-bit, or auto-sending
- **Connector:** 16-bit PC/104 stackthrough connector RJ-45 connector for 10Base-T, 16-pin insulation displacement connector for AUI
- **Standard:** IEEE 802.3 10 Mbps CSMA/CD 10Base-T Transceiver
- **Power Consumption:** +5 V @ 400 mA max

Ordering Information

- PCM-3660-C1**
Jumperless ethernet module
- PCM-3661-A**
10Base-2 transceiver module

WebLink WebOT	1
IPPC & AWS	2
TPC	3
FPM	4
IPC	5
UNO-2000	6
ICOM	7
DA&C	8
cPCI	9
ADAM-3000	10
ADAM-4000	11
ADAM-5000	12
ADAM-6000	13
ADAM-8000	14
Industrial Converters	15
VBOX	16
Software	17
Index	