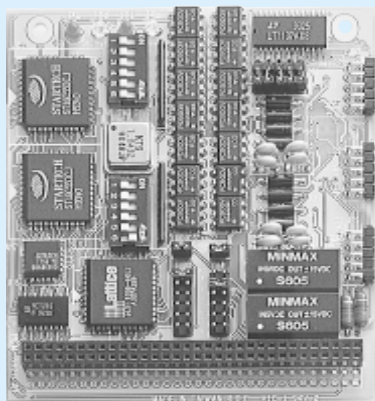


PCM-3610

Isolated RS-232/422/485 Module



CE FCC

Features

- High speed transmission rate
- Automatic RS-485 data flow control
- Jumper selectable interrupt level
- Supports Windows® 95/98/ME/NT/2000/XP, Linux, Windows® CE driver

Specifications

Channel 1	RS-232,422, or 485
Channel 2	RS-422, or RS-485
Baud Rate	50 ~ 115,200 bps
Character Length	5,6,7, or 8 bits
Parity	Even, odd, or none
Stop Bit	1, 1.5, or 2
Interrupt Level	IRQ 3,4,5,6,7,9
I/O Connectors	Dual male DB-9
Power Consumption	+5 V @ 400 mA (typical)
Power Requirements	+5 V, ±5 % tolerance on power supply
Size/Weight	96 mm x 90 mm (3.8" x 3.5"), 0.11 kg (0.242 lb)
Temperature	Operating: 0 ~ 65° C (32 ~ 140° F) Storage : -40 ~ 85° C (-40 ~ 185° F)
Operating Humidity	0% ~ 90% relative humidity, non-condensing
Isolation	1000 V _{dc}

Packing List

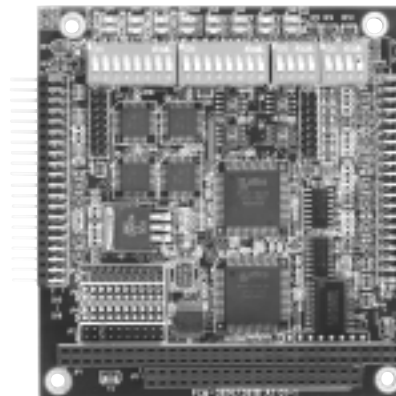
- Flat cable 30 cm (9P-10P) 1701100300
- CD-ROM (Manual, Driver, Utility)

Ordering Information

PCM-3610-B	Isolated RS-232/422/485 Module
------------	--------------------------------

PCM-3614/3618

4/8 Port RS-422/485 High-Speed Module



CE FCC

Features

- 4/8 independent RS-422/485 serial ports
- Automatic RS-485 data flow control
- Transmission speeds up to 921.6 Kbps
- Shared IRQ settings for each port
- Supports Windows® configuration utility for Windows® 95/98/ NT/ ME/ 2000/ XP, Windows® CE driver
- Built-in termination resistors
- LED indicators: TX, RX
- Standard PC ports: COM1, COM2, COM3, COM4 compatible

Specifications

Bus Interface	PC/104 (ISA)
Number of Ports	4 (PCM-3614) /8 (PCM-3618)
I/O Address	0 x 000 ~ 0 x 3F8
UART	4 x 16C550 (PCM-3614) 8 x 16C550 (PCM-3618)
IRQ	3, 4, 5, 6, 7, 9, 10, 11, 12, 15
Data Bits	5, 6, 7, 8
Stop Bits	1, 1.5, 2
Parity	none, even, odd
Speed (bps)	50 ~ 921.6 K
Connectors	4/8 DB-9 male
Signal Support	TxD+, TxD-, RxD-, CTS+, CTS-, RTS+ and RTS-
Surge Protection	1000 VDC
Temperature	Operating : 0 ~ 6° C (refer to IEC-68-1-1, 2) Storage : -25 ~ 80° C
Operation Humidity	0% ~ 90% relative humidity, non-condensing
Power Consumption	+5 @ 450mA (PCM-3614) +5 @ 650mA (PCM-3618)

Packing List

- COM port cable
- CD-ROM (Manual, Driver, Utility)

Ordering Information

PCM-3614	4-port RS-422/485 high-speed module
PCM-3618	8-port RS-422/485 high-speed module