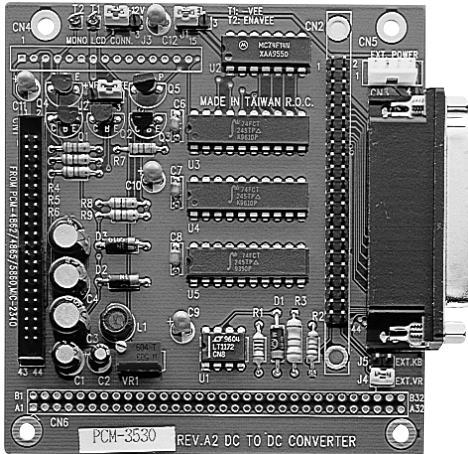


PCM-3530

Flat Panel Signal Converter Module



Features:

- Provides reliable DC voltage for a flat panel display
- PC/104 Form Factor
- 2 meters maximum transmission distance

Specifications

• Input	Enavee, +5 V
• Input Connector	44-pin, 2.0 mm pitch pin assignment. Can be used with MIC-2340, PCM-4862 and more
• Output	±40 V
• Output Connector	40-pin, 2.54 mm pitch
• Maximum Distransmission Tance	2 meters (max.) between the flat panel and converter nearest the built-in data buffer
• Power Consumption	+5 V @ 1.2 W (typical)
• Power requirements	+5 V, ±5 % tolerance on power supply
• Size/Weight	96 mm x 90 mm (3.8" x 3.5"), 0.072 kg (0.159 lb)
• Temperature	Operating: 0 ~ 60° C (32 ~ 140° F) Storage: -40 ~ 85° C (-40 ~ 185° F)
• Operating Humidity	0% ~ 90% Relative Humidity, non-condensing

Packing List

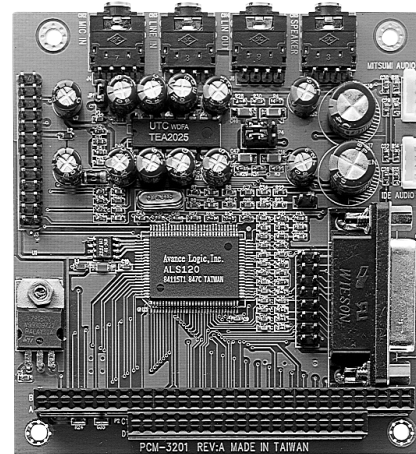
- Start up Manual
- CD-ROM (Manual, Driver, Utility)

Ordering Information

- PCM-3530-0000 Flat Panel Signal converter module

PCM-3201

PC/104 Sound Module



FCC CE

Features:

- Sound Blaster Pro & 16 compatible
- Proven Avance Logic compatible
- Built-in 3D Sound Effect Processor
- Built-in ALSFM Synthesizer
- Built-in Game/MIDI port support
- Full Duplex for concurrent recording & playback

Specifications

• Control chipset	Realtek ALS120
• Computer Bus	PC/104 (ISA) Standard
• Bus Width	16-bit
• Power consumption	+5 V @ 180 mA, +12 V @ 100mA (typical)
• Power requirements	+5 V, +12 V ±5% tolerance on power supply
• Size/Weight	96 mm x 90 mm (3.8" x 3.5"), 0.079 kg (0.174 lb)
• temperature	Operating: 0 ~ 70° C (32 ~ 158° F) Storage: -40 ~ 85° C (-40 ~ 185° F)
• Operating Humidity	0% to 95% relative humidity, noncondensing

Packing List

- Start up Manual
- CD-ROM (Manual, Driver, Utility)

Ordering Information

- PCM-3201-00A1 Sound Module