

PCM-3526 TFT to VGA Module Startup Manual

Packing List

Before you begin installing your card, please make sure that the following materials have been shipped:

- 1 PCM-3526
- 1 Startup manual

If any of these items are missing or damaged, contact your distributor or sales representative immediately.

Note 1: For detailed contents of the PCM-3526, please refer to the enclosed CD Disc or disk (in PDF format).

Note 2: Acrobat Reader is required to view any PDF file. Acrobat Reader can be downloaded at:
www.adobe.com/Prodindex/acrobat/readstep.html(Acrobat is a trademark of Adobe.)

Mechanical and Environmental

- **Dimensions (L x W):** 72 x 62 mm (3.8" x 3.5")
- **Weight:** 30g
- **Operating Temperature:** 0 ~ 60°C(32~140°F)
- **Storage temperature:** -40 ~ 85°C(-40~185°F)
- **Operating Humidity:** 0%~90% relative humidity, non-condensing
- **Power Supply Voltage:** 5V or 12V
- **Power Requirements:** 6 ~ 12V @600mA (9V Recommended)

Specifications

- **Chipset:** Analog Devices ADV7123KST140
- **TFT Input:** 24,18bit TFT
- **VGA output:** 15-pin D-SUB VGA output
- **Resolution :**1024 x 768, 800 x 600, 640 x 480
- **TFT Connector:** Hirose or Pin Header
- **External Power:** +5V, +12V
- Connector ESD Keypad connector for OSD control
- LCD connector Hirose or pin header
- Touch Screen Supported

Features

VGA to TFT panel transfer module

Touch Screen and OSD (cable optional) support

Suitable for TFT LCD Panel Adapter

For more information on this and other Advantech products, please visit our website at:

<http://www.advantech.com>

<http://www.advantech.com/epc>

For technical support and service, please visit our support website at:

<http://service.advantech.com.tw/eservice/>

This manual is for the PCM-3526 series Rev. A1.

Part No. 2006352600

1st Edition
Sep. 2004

Jumpers & Connectors

Connectors on the board link it to external devices, such as hard disk drives, a keyboard or expansion bus connectors. In addition, the board has a number of jumpers that allow you to configure your system to suit your application.

The table below lists the function of each of the jumpers and connectors.

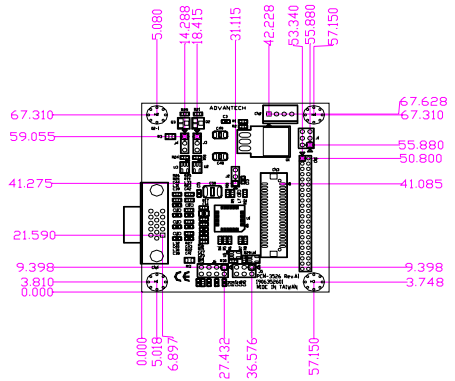
Connectors

Label	Function
CN1	LCD Connector of 44-pin Header
CN2	External Power Connector
CN3	LCD Connector of 40-pin HIROSE
CN4	VGA Connector

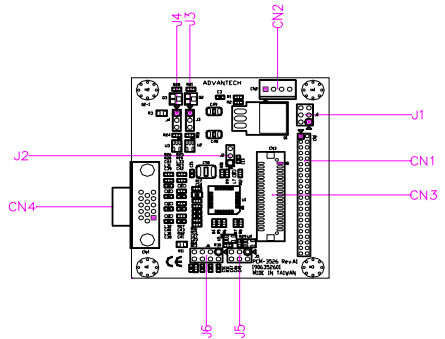
Jumpers

Label	Function
J1	5V Power Source Selector
J2	Power Selector of ADV7123
J3	Active Level Selector of VSYNC
J4	Active Level Selector of HSYNC
J5	Shift Clock invert
J6	Shift Clock bypass capacitor

Board Layout



Dimensions



Component Placement