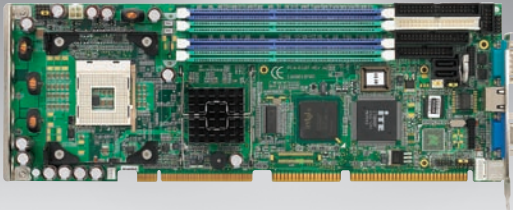


PCA-6187-A2

**Socket 478 Pentium® 4/Celeron® D/
Celeron Processor Card with VGA/
Dual GbE LAN/SCSI**



Features

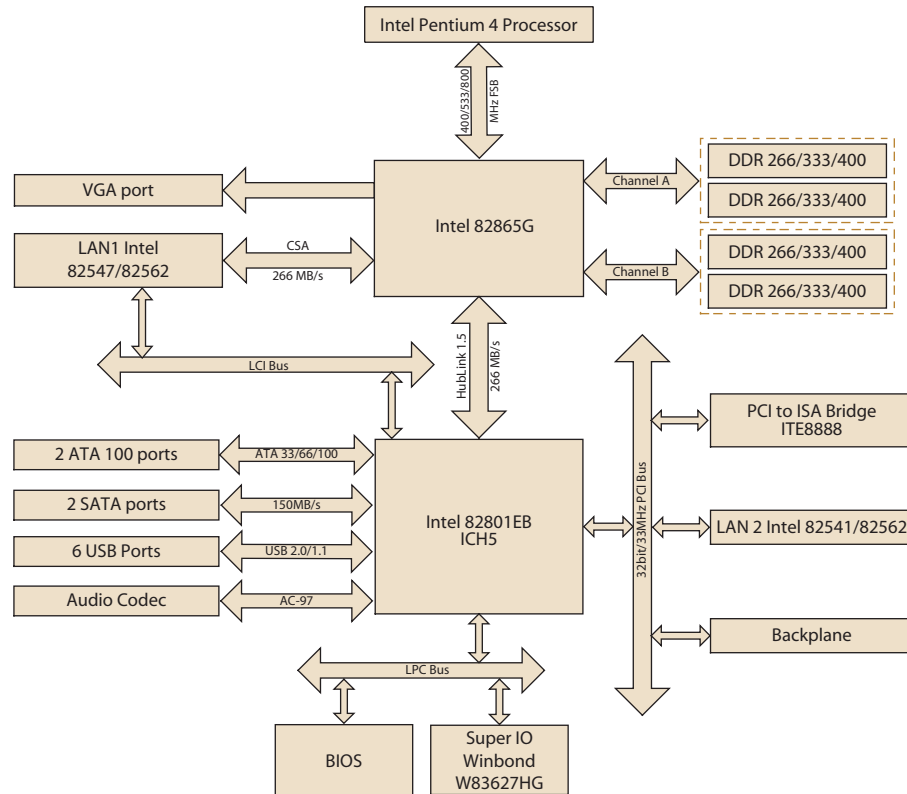
- Supports up to two Serial ATA devices
- Supports Dual Channel DDR 266/333/400 SDRAM
- Onboard Adaptec® AIC-7899 dual channel Ultra160 SCSI up to 160 MB/s
- Intel® 865G chipset 400/533/800 MHz FSB
- Onboard integrated VGA controller, shared memory architecture
- Supports 10/100Base-T Ethernet or 10/100/1000Base-T Ethernet
- Six USB 2.0 ports
- CMOS automatic backup and restore to prevent accidental data loss of BIOS setup



Specifications

Processor System	CPU	Intel Pentium 4	Intel Celeron D	Intel Celeron
	Max. Speed	3.06 GHz (533 FSB) 3.4 GHz (800 FSB) * Vcore 1.75 V CPU (Willamette) not supported	3.06 GHz	2.8 GHz
	L2 Cache	256 KB/ 512 KB/ 1 MB	256 KB	128/256 KB
	Chipset	Intel 865G + ICH5		
	BIOS	Award 4 Mbit FWH		
	Front Side Bus	400/533/800 MHz		
Bus	PCI	32-bit/33 MHz		
	ISA	HiSA (ISA high drive)		
Memory	Technology	Dual Channel DDR 266/333/400 SDRAM		
	Max. Capacity	4 GB		
	Socket	184-pin DIMM x 4		
Graphics	Controller	Chipset integrated VGA controller		
	VRAM	Dynamically shared system memory, 8 ~ 64 MB		
Ethernet	Interface	10/100Base-T; 10/100/1000Base-T (optional)		
	Controller	LAN 1: Intel 82562EZ (FE); Intel 82547GI (Gigabit, CSA) LAN 2: Intel 82541PI (Gigabit)		
	Connector	RJ-45 x 2		
SATA	Max. Data Transfer Rate	150 MB/s		
	Channel	2		
EIDE	Mode	ATA 100/66/33		
	Channel	2 (Max. 4 devices)		
I/O Interface	USB	Max. 6 (USB 2.0 compliant), 4 ports on board for G2 versions		
	Serial	2 (RS-232)		
	Parallel	1 (SPP/EPP/ECP)		
	FDD	1		
	PS/2	1		
Watchdog Timer	Output	Interrupt, system reset		
	Interval	Programmable, 1 ~ 255 sec.		
Miscellaneous	Audio Output	AC97 audio interface (requires an audio extension module P/N: PCA-AUDIO-00A1E)		
	Typical	Pentium 4 3.0 GHz (800 MHz FSB), 4 x 512 MB DDR 400 SDRAM		
Power Requirement		+5 V	-5 V	+12 V
		6.53 A	0.1 A	4.6 A
Environment		Operating	Non-Operating	
	Temperature	0 ~ 60° C (32 ~ 140° F), depends on CPU's speed	-20 ~ 70° C (-4 ~ 158° F)	
Physical Characteristics	Dimensions (W x D)	338 x 122 mm (13.3" x 4.8")		

Board Diagram



Ordering Information

Part Number	VGA	Fast Ethernet LAN	Gigabit LAN
PCA-6187VE-00A2E	Yes	Single	-
PCA-6187VG-00A2E	Yes	-	Single
PCA-6187G2-00A2E	Yes	-	Dual

Bracket View



PCA-6187VE-00A2E
PCA-6187VG-00A2E



PCA-6187G2-00A2E

Packing List

Part Number	Description	Quantity
1700340640	FDD cable	x 1
1701400452	IDE HDD cable	x 2
1700003194	Serial ATA HDD data cable	x 2
1703150102	Serial ATA HDD power cable	x 2
170304015K	ATX 12 V power converter cable	x 1
1701260305	Printer + COM cable	x 1
1700060202	Y cable for PS/2 mouse & keyboard	x 1
9689000068	Jumper pack	x 1
-	Startup manual	x 1
-	Utility CD	x 1
1700007371	USB wire	x 1

Accessories

Part Number	Description
1700100170	USB cable with 2 ports
PCA-USB4-00A1E	USB extension module with 4 ports (only for VE, VG versions)
1750000242	CPU cooler for Pentium 4 processor up to 2.5 GHz (70 W), for 1U chassis
1750000257	CPU cooler for Pentium 4 processor up to 3.2 GHz (89 W), for 2U or higher chassis
2070000128	Embedded Windows XP Kit