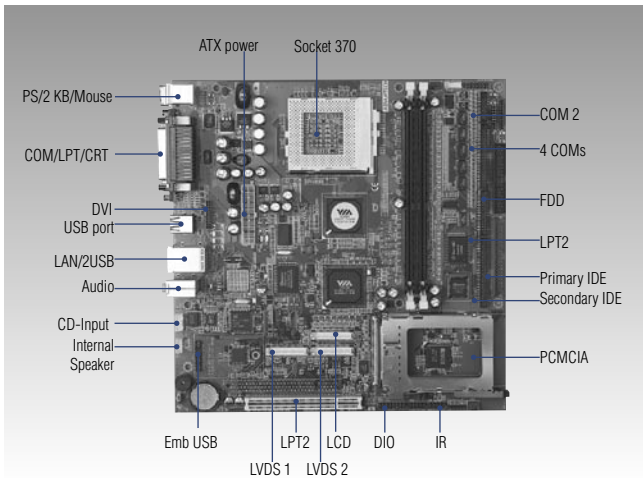


AIMB-330

Socket 370 Embedded ATX SBC
w/ DVI, LVDS, USB, LAN



Features

- Socket 370 supports Intel® Celeron®/Pentium® III (Tualatin), VIA® C3 > 750 MHz processors
- On-chip AGP 4X performance, supporting CRT and up to 24-bit TTL or LVDS interface TFT LCD displays with DVI
- Dual independent display supported (multiple display combination optional)
- Two/six serial ports, one RS-232/422/485, the others are RS-232. COM 3 ~ 6 shared IRQ
- DDR266 DRAM in two DIMM memory sockets
- Six USB 2.0 ports
- Mini PCI socket for optional modem/wireless LAN
- I2C, D/I/O interfaces
- System overheat temperature control
- 63-level watchdog timer, jumperless online setup supported

Specifications

General

- **CPU** Socket 370 supports Intel Celeron/Pentium III (Tualatin), VIA C3 > 750 MHz
- **2nd Cache Memory** 256 KB/512 KB on processor
- **System Chipset** VIA® CLE266 + 8235 Chipset
- **BIOS** AWARD® 256 kbit flash BIOS
- **System Memory** DDR DIMM x 2, Max. 2 GB
- **Power Management** APM 1.1
- **SSD** CompactFlash® card support
- **Watchdog Timer** 1 ~ 62 sec, system reset
- **Expansion Interface** 1 x PCI, 1 x miniPCI, 2 x Cardbus (optional), 2 x Firewire (optional)
- **Battery** Lithium 3 V/220 mAh

I/O

- **I/O Interface** 2 x EIDE (40-pin Ultra DMA 66 & 100 and 44-pin Ultra DMA 33), 1 x K/B, 1 x mouse, 1 x RS-232/422/485, 5 x RS-232, 2 x LPT
- **USB** 6 x USB 2.0
- **Audio** Line-in, line-out, Mic, CD-in
- **IrDA** 115.2 kbps, IrDA 1.0 compliant
- **GPIO** 4 TTL digital out, 4 TTL digital in

Ethernet

- **Chipset** RealTek® RTL8139DL 10/100 Mbps or Intel 82541GI (10/100/1000 Mbps optional)
- **Speed** 10/100Base-T or 1000Base-T
- **Interface** 1 x RJ-45
- **Standard** IEEE 802.3, IEEE 802.3u, IEEE 802.3z/ab (optional)

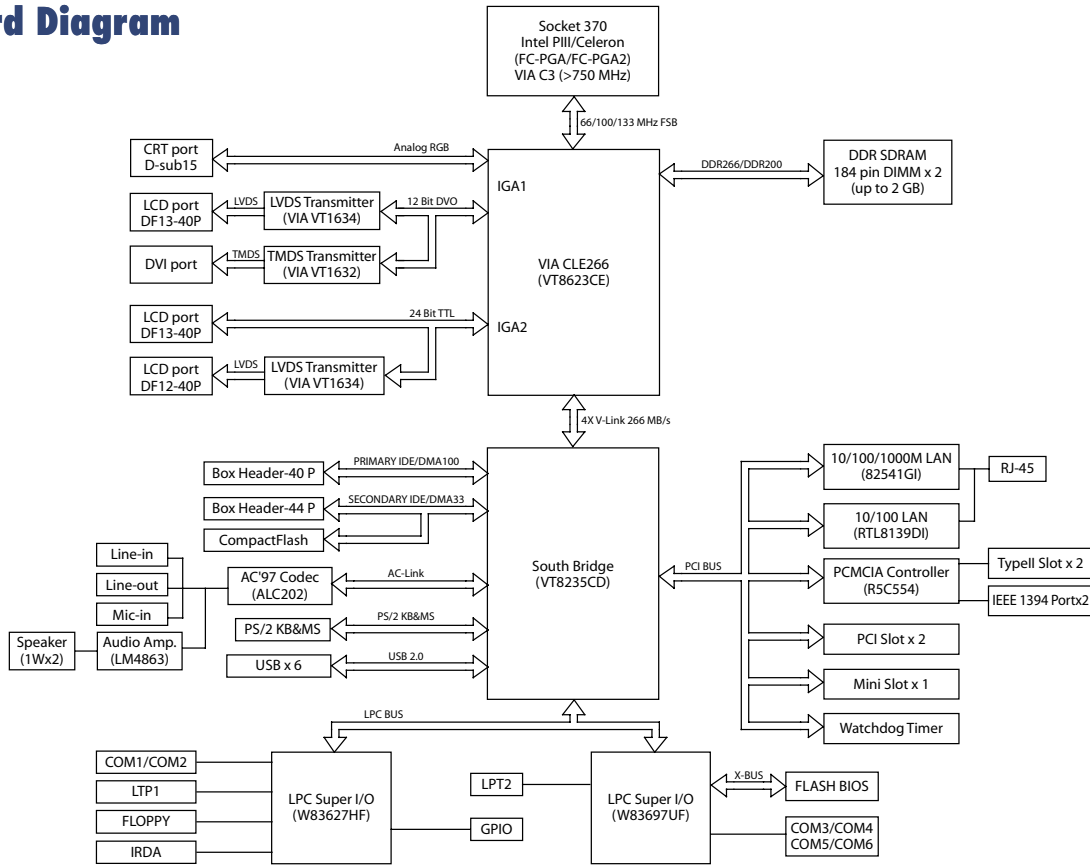
Display

- **Chipset** VIA CLE266 / VT8623CD
- **Memory Size** VIA Direct Memory Execution model uses system memory
- **Resolution** Maximum 3D resolution: 1600 x 1200 @ 32 bpp at 85 Hz
Maximum Video Overlay resolutions: 1600 x 1200 @ 32 bpp at 60 Hz
1280 x 1024 @ 32 bpp at 85 Hz
- **Dual Independent Display** CRT+ LCD panel (LVDS/TTL)
DVI + LCD panel (LVDS/TTL)
CRT + DVI
TTL + LVDS LCD panel
LVDS + LVDS LCD panel

Mechanical and Environmental

- **Dimension (L x W)** 244 x 244 mm (9.6" x 9.6")
- **Weight** 0.8 kg (weight of total package)
- **Operating Temperature** 0 ~ 60° C (32 ~ 140° F), operating
- **Operating Humidity** 0% ~ 90% relative humidity, noncondensing
- **Power Supply Voltage** +5 V ±5%, +12 V ±5%, -12 V ±5%
- **Power Consumption** +12 V (CPU) @ 0.33 A, +5 V @ 6.15 mA, +3.3 V @ 2.6 A (Pentium III 1.26 GHz, 256 MB DDR333)

Board Diagram



Packing List

- 1 x AIMB-330 SBC
- 1 x Primary IDE cable (p/n: 1701400452)
- 1 x Secondary IDE cable (p/n: 1701440350)
- 1 x Serial cable 45 cm (p/n: 1700000445)
- 1 x 4-port serial cable 45 cm (AIMB-330F) (p/n: 1700000447)
- 1 x Jumper Pack (p/n: 9689000068)
- 1 x I/O shield (p/n: 1960001955)
- 1 x Startup Manual
- 1 x Utility CD

Optional Accessories

- Serial cable 20 cm (p/n: 1701140201)
- UDMA/100 40 pin IDE flat cable 45 cm (p/n: 1700000364)
- LPT Cable (45 cm) (p/n: 1700000599)
- USB cable (2.54 mm) (p/n: 1700100170)
- IEEE 1394 cable (p/n: 1700000644)
- DVI cable (p/n: 1700000410)
- FDD cable (p/n: 1700340640)

Ordering Information

Part No.	LVDS	DVI	10/100	Giga	USB 2.0	RS-232	RS-232/422/485	GPIO	LPT	CF	miniPCI	PCMCIA	IEEE1394	PCI
AIMB-330F-00A1E	2	-	1	-	6	5	1	4 in, 4 out	1	Yes	Yes	-	-	1
AIMB-330V-00A1E	2	1	1	-	6	5	1	4 in, 4 out	1	Yes	Yes	-	-	1
AIMB-330G-00A1E	2	1	-	1	6	5	1	4 in, 4 out	1	Yes	Yes	Yes	Yes	1