

# AIMB-240

## Startup Manual

### Packing List

Before you begin installing your single board, please make sure that the following materials have been shipped:

- 1 x AIMB-240 Mini ITX Motherboard
- 1 x CD-ROM or DVD-ROM contains the followings:
  - User's Manual (this manual in PDF file)
  - Drivers
- 1 x IDE HDD cable (40-pin, pitch 2.54mm)
- 1 x IDE HDD cable (44-pin, pitch 2 mm)
- 1 x FDD cable (34-pin, pitch 2.54mm)
- 1 x Serial port cable with DB9P(M)
- 1 x Secondary port cable 14P FLAT to DB9P(M)
- 1 x I/O shield
- 1 x Startup Manual
- 1 x Rear I/O bracket
- 1 x Warranty card

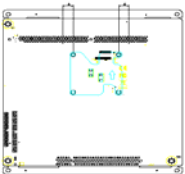
CPU cooler is not included in packing list. Please note that AIMB-240 uses socket 479 connector to accommodate Intel Pentium 4/Celeron socket 478 processor. Please only use Advantech's certified CPU cooler.

### Installation Note

Signal	PIN	PIN	Signal
F_PWRBTN#	11	12	PWRBTN

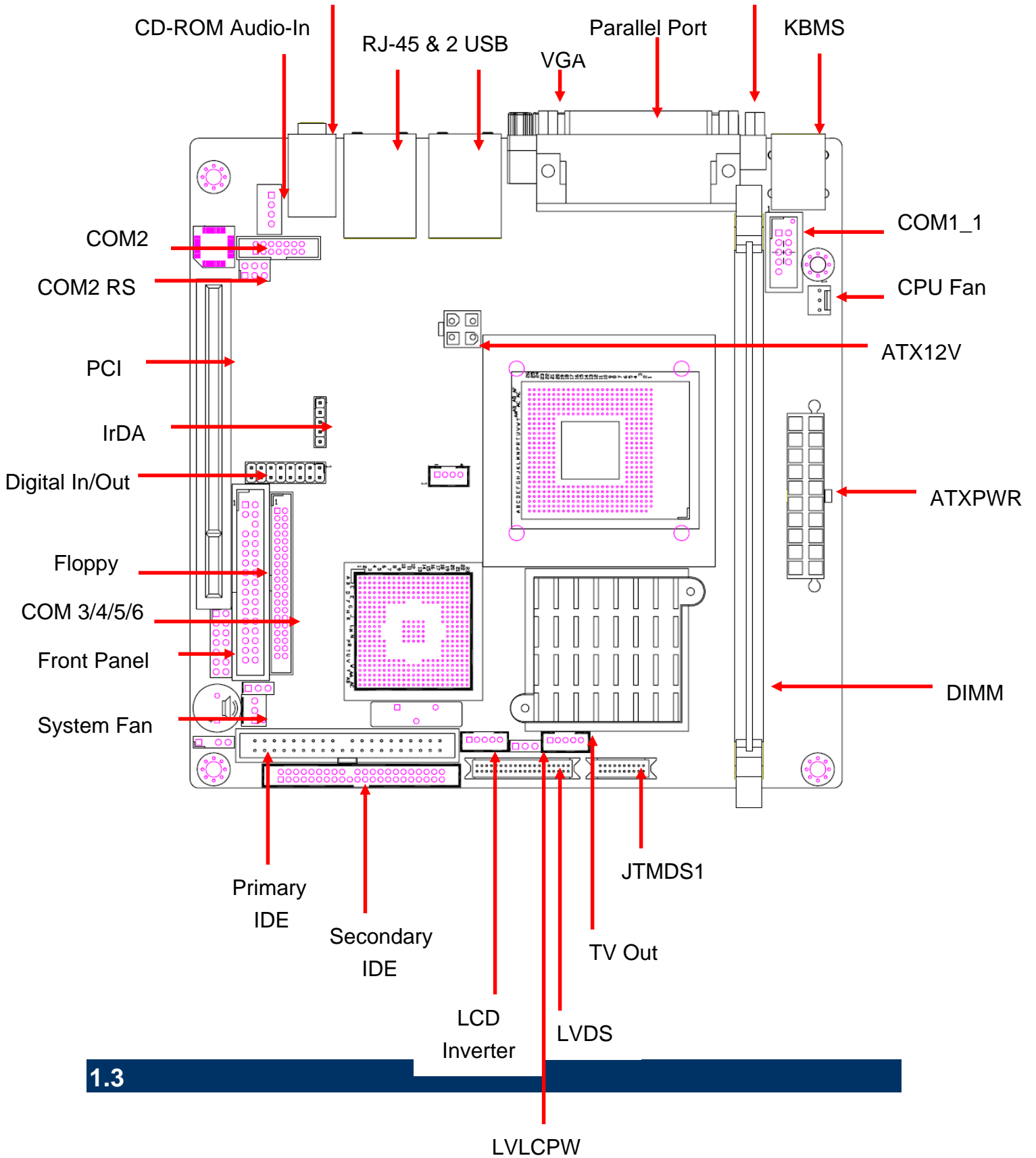


\*Power button pin is located in Pin 11&12 of front panel connector.







Retention module can be found in the cooler box. Please install the retention module correctly to align with the mark on PCB

# Product Overview



## System Specifications

System 	
Model	<b>AIMB-240F-00A1E</b>
CPU	Supports Intel® µFC-PGA 478 Pentium® 4 / Celeron™ up to 2.8 GHz with 0.13µ process technology
FSB	400/533 MHz
BIOS	Award 512 KB Flash BIOS
System Chipset	Intel® 852GME GMCH/ICH4
I/O Chip	Winbond W83627HF-AW
System Memory	One 184-pin DIMM socket supports up to 1 GB DDR 266/333 SDRAM
SSD	One Compact Flash Type I/II socket
Watchdog Timer	Reset: 1 sec.~255 min. and 1 sec. or 1 min./step
H/W Status Monitor	Monitoring system temperature, voltage, and cooling fan status. Auto throttling control when CPU overheats.
Expansion	One PCI slot (PCI Rev. 2.2 compliant)
I/O 	
MIO	2 x EIDE, 1 x FDD , 1 x LPT, 5 x RS-232, 1x RS-232/422/485, 1x K/B, 1 x Mouse
IrDA	115k bps, IrDA 1.0 compliant
USB	6 x USB 2.0 ports
DIO	16-bit General Purpose I/O for DI and DO
Display 	
Chipset	Intel® 852GME GMCH integrated Extreme Graphics 2 controller
Display Memory	Intel® DVMT 2.1 supports up to 64 MB video memory
Resolution	CRT mode: 1600 x 1200 @ 32 bpp (85 Hz), LCD mode: 1600 x 1200 @ 32 bpp
Dual Display	CRT + LVDS, or DVI/TV-out + LVDS or CRT + DVI
LVDS	Single-channel 18-bit/ Dual-channel 24-bit LVDS
DVI	Chrontel CH7009A DVI transmitter up to 135M pixels/second
TV-Out	Chrontel CH7009A TV encoder supports both NTSC/PAL Supports both S-Video and composite video
Audio 	
Chipset	Intel® ICH4
AC97 Codec	Realtek™ ALC655 supports 5.1CH AC97 Audio
Audio Interface	<b>Mic in, Line in, CD Audio in, Line out</b>
Ethernet 	
LAN1 & LAN 2	Realtek RTL8110C 10/100 Mbps

## Jumpers and Connectors

### Jumpers & Connector

Label	Function
CMOS	Clear CMOS
COM2_RS	RS-232/422/485 Jumper for COM2
COM1	Serial port connector (at rear I/O)
COM1_1	Serial port connector (pin header)
COM2	Serial port connector for RS-232/422/485
COM3/4/5/6	Serial port connectors for 4 serial ports
ATXPWR	20Pin ATX power connector
ATX12V	4Pin 12V power connector
CPU_FAN	CPU fan power connector
CHA_FAN	System fan power connector
VGA	VGA connector (at rear I/O)
Parallel	Parallel connector (at rear I/O)
Audio	Audio connector (at rear I/O), Line-In, Line-Out, MIC
RJ-45+ USB	RJ45 and 2 USB connector (at rear I/O)
FDD	Floppy connector
PRI_IDE	Primary IDE connector (40 pin)
SEC_IDE	Secondary IDE connector (44 pin)
LVDS_INV	LCD Inverter connector
CD_In	CD-ROM Audio Input
DIO	Digital input and output connector
FP	Front panel connector
IR_con	IrDA connector
LVDS	LVDS connector
LVLCPW	Panel voltage selector
DVI	DVI connector
TV_out	TV-Out connector
USB5,6	USB connector
KB_MS	PS2 Keyboard and Mice connector