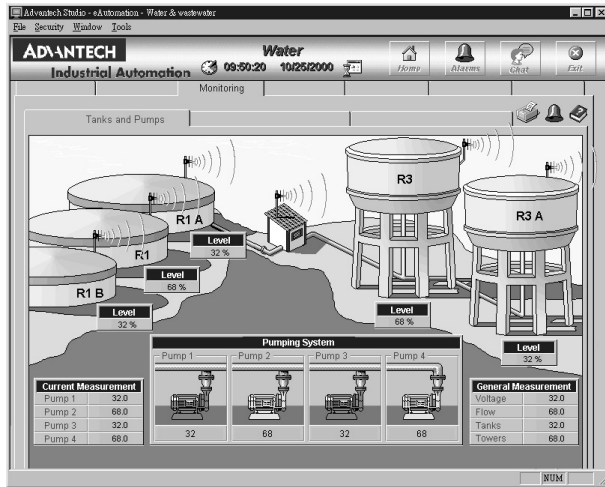


Advantech Studio

Web-enabled HMI/
SCADA Software



Features

- Publish real-time dynamic and animated graphic screens, trends, alarms, reports, and recipes to standard browsers
- Import and export recipes, reports and real-time data using the XML format
- Use the same development environment as applications running on Microsoft® Windows® NT/2000/XP and CE or on the Web
- Integrates seamlessly with your Windows desktop applications (such as Microsoft® Word and Excel)
- View multiple clients from one Web browser
- Multi-level security for applications, including use over Intranets and Internet.
- Conforms to industry standards such as Microsoft DNA, OPC, DDE, ODBC, XML, and ActiveX
- Software protection type: Softkey

Introduction

Advantech Studio is a powerful, integrated collection of automation tools that includes all the building blocks required to develop modern Human Machine Interfaces (HMIs), and Supervisory Control and Data Acquisition System (SCADA) applications that run on Windows NT/2000/XP and CE, or in an Internet / Intranet environment. A simple drag and drop, point and click development environment simplifies the most complex behavior of your live processes, but a flexible and easy-to-use scripting language is also available for special requirements. Advantech Studio is currently being used in nearly 2,000 installations worldwide.

Advantech Studio for Windows CE is based on Advantech Studio's full scale supervisory control and monitoring system, and has almost all of the same features, including an object-oriented database, math functions, report generation, archiving, alarms, batch recipes, and interfaces for PLCs, remote I/O and TCP/IP networking. In other words, Advantech Studio for Windows CE is a full-function supervisory control and monitoring system that fits in the palm of your hand or can be embedded in the chipset of a low-cost operator interface. Advantech Studio for Windows CE is software for complete supervisory control and process monitoring with an operator interface that is available for the Microsoft Windows CE operating system platform.

System Requirements

| | Product Series or Part Number | AS256-WR60 | AS256-WD60 | AS512-WR60 | AS512-WD60 | AS1500-WS60 | AS1500-WR60 |
|---------------|-------------------------------|-------------|-------------|-----------------|-----------------|-----------------|-----------------|
| Type | S/W scope | Win32 Lite | Win32 Lite | Win32 Lite Plus | Win32 Lite Plus | Local Interface | Local Interface |
| | Authorized version | R | D | R | D | S | R |
| Overview | Development Tool OS | - | WinNT/2K/XP | - | WinNT/2K/XP | WinNT/2K/XP | - |
| | Runtime OS | WinNT/2K/XP | - | WinNT/2K/XP | - | WinNT/2K/XP | WinNT/2K/XP |
| Database | Application tags | up to 256 | up to 256 | up to 512 | up to 512 | up to 1,500 | up to 1,500 |
| Communication | Drivers | only 2 | only 2 | only 2 | only 2 | 3 by default | 3 by default |

| | Product Series or Part Number | AS1500-WD60 | AS4000-WS60 | AS4000-WR60 | AS1500-CD60 | AS4000-CD60 | WebLink/WebOIT |
|---------------|-------------------------------|--------------|----------------------|----------------------|----------------------------|----------------------------|----------------|
| Type | S/W scope | Development | Operator Workstation | Operator Workstation | Development for CE Runtime | Development for CE Runtime | CE Runtime |
| | Authorized version | D | S | R | D | D | R |
| Overview | Development Tool OS | WinNT/2K/XP | WinNT/2K/XP | - | WinNT/2K/XP | WinNT/2K/XP | - |
| | Runtime OS | - | WinNT/2K/XP | WinNT/2K/XP | - | - | WinCE |
| Database | Application tags | up to 1,500 | up to 4,000 | up to 4,000 | up to 1,500 | up to 4,000 | up to 4,000 |
| Communication | Drivers | 3 by default | 5 by default | 5 by default | only 3 | up to 3 | up to 3 |

| Legend | |
|-----------|--|
| Supported | ✓ |
| D | Determined by Development version only |
| R | Determined by Runtime version only |
| S | Suit version includes Development and Runtime versions |

Specifications

- **Pre-built Servers** Web Server, FTP Server, Telnet Server, Remote Access Server (RAS)
- **HMI Functions**
 - 100+ built-in PLC drivers (up to 3 running simultaneously)
 - 8 simultaneous web clients
 - OPC Client and Server
 - Email (SMTP) Integration
 - Fully featured dynamic graphics with object library
 - Alarming, Trending, Reporting features
 - Scripting Language with 100+ standard functions
 - Recipes (ASCII and XML formats)
 - Remote project management including online editing
 - Multi-level security for use over Intranet and Internet

System Requirements: Development Environment

- Microsoft® Windows® XP, 2000, NT 4.0 service pack 4 or higher
- Min. 256 MB of RAM. (512 MB Recommended)
- 100 MB of free hard-disk space for installation
- CD-ROM drive (for installation only)

System Requirements: Runtime Environment

- Windows® CE 4.2
- Min. 64 MB of memory

or

- Microsoft® Windows® 2000/XP/NT 4.0 with Service Pack 4 or higher
- Min. 32 MB of RAM. (64 MB Recommended)
- Web Browser that supports ActiveX objects

Hardware Platforms Supported

- **WebOIT-60S** Web-enabled Operator Interface Terminal with 5.7" QVGA STN Display
- **WebLink-2050** Web-enabled Gateway with 16-ch Isolated DI/O and AStudio CE Runtime version (4000 tags)
- **WebLink-2053** Web-enabled Gateway with Dual LAN and AStudio CE Runtime version (4000 tags)
- **WebLink-2059** Web-enabled Gateway with 4 x RS-232/422/485 ports and AStudio CE Runtime version (4000 tags)
- **WebLink-2160** Web-enabled Gateway with PC/104 extension and AStudio CE Runtime version (4000 tags)

Applications

- Remote Utility Management
- Building Automation
- Water and Wastewater Management
- Factory Automation
- Machine Builder

Ordering Information

Suit Version

- **AS1500-WS60** AStudio Development Kit Professional Edition for Windows® XP/2000/NT (including DEV and RT Editions)
- **AS4000-WS60** AStudio Workstation Professional Edition for Windows® XP/2000/NT (including DEV and RT Editions)

Development Version

- **AS256-WD60** AStudio Development Kit for Windows® XP/2000/NT (Asia Only)
- **AS512-WD60** AStudio Development Kit for Windows® XP/2000/NT (Asia Only)
- **AS1500-WD60** AStudio Development Kit for Windows® XP/2000/NT
- **AS1500-CD60** AStudio Development Kit for Windows® CE .NET
- **AS4000-CD60** AStudio Workstation Development Kit for Windows® CE .NET

Runtime Version

- **AS256-WR60** AStudio Runtime Edition for Windows® XP/2000/NT (Asia Only)
- **AS512-WR60** AStudio Runtime Edition for Windows® XP/2000/NT (Asia Only)
- **AS1500-WR60** AStudio Runtime Edition for Windows® XP/2000/NT
- **AS4000-WR60** AStudio Runtime Edition for Windows® XP/2000/NT

Upgrade Kit

- **AS1500-CD60/U** Upgraded kit from AS1500-CD51 to AS1500-CD60
- **AS1500-WD60/U** Upgraded kit from AS1500-WD51 to AS1500-WD60
- **AS4000-CD60/U** Upgraded kit from AS4000-CD51 to AS4000-CD60
- **AS4000-WS60/U** Upgraded kit from AS4000-WS51 to AS4000-WS60

Communication Drivers

| | |
|---|---|
| Advantech | ADAM-4000, ADAM-5000/485, ADAM-6000 |
| AEG Schneider (Modicon Square D Telemecanique) | AEG Compact PLC*, ModCon 984E*, Quantum Family |
| | ModCon 984E* Ethernet Quantum Ethernet Family MODBUS Plus compatible equipment |
| Allen-Bradley® | Symax |
| | Family PLC2 |
| | Family PLC5 |
| | Family SLC500 Family 5000 |
| Cutler-Hammer® | D50*, D300 |
| GE-Fanuc® | Series 90, 90/30 CPU 341* |
| Mitsubishi® | FX-232AW |
| Omron® | C-series Rack PCs |
| | Sysmac way Host link units Sysmac C200H* |
| | E5CK / E5AF |
| Phoenix® | Interbus Compatible |
| | S5 (PG port) |
| Siemens® | S5/S7 3964R, S7 (MPI) |
| | Profibus DP Slave Compatible |
| | Profibus DP Master Compatible |
| | Profibus FMS Compatible |
| | S5-945 PG Port |
| | MXT521 |
| Yokogawa® | UT35 |
| | HR2500E |
| | DA100 |
| | UT37/UT38 |
| | UT750, UP750, UT550, UT520, UP550, UT350, UT320, UM350, UM330, UP350 |
| | YS100 |
| | |
| Modbus Ethernet | Modbus/TCP |
| Modbus | RTU/ASCII |
| OPC | Server/Client |

Note: Advantech Studio V6.0 supports more than 150 communication drivers for 3rd party devices from different manufacturers such as Omron®, Allen-Bradley®, Siemens®, and many more.

