

# ActiveSync User Guide

## *Introduction*

This document introduces how build the connection between UNO-2000 series and host PC via Microsoft ActiveSync 3.6.

## *ActiveSync Setting Procedure*

1. Insert UNO CD into the CD-ROM in the host PC.
2. Install UNO Software Development Kit for eVC++ from below path:  
**(\$Windows CE)\CE .NET V4.1\SDK\Advantech\_UNO\_X86\_SDK4\_V1.10.msi**
3. Install Microsoft ActiveSync 3.6 from below path:  
**(\$Windows CE)\Utility\Microsoft ActiveSync 3.6.exe**
4. Connect host computer and UNO with a **null modem cable** (come with the shipment), and be sure the connection is both on RS-232 serial port.

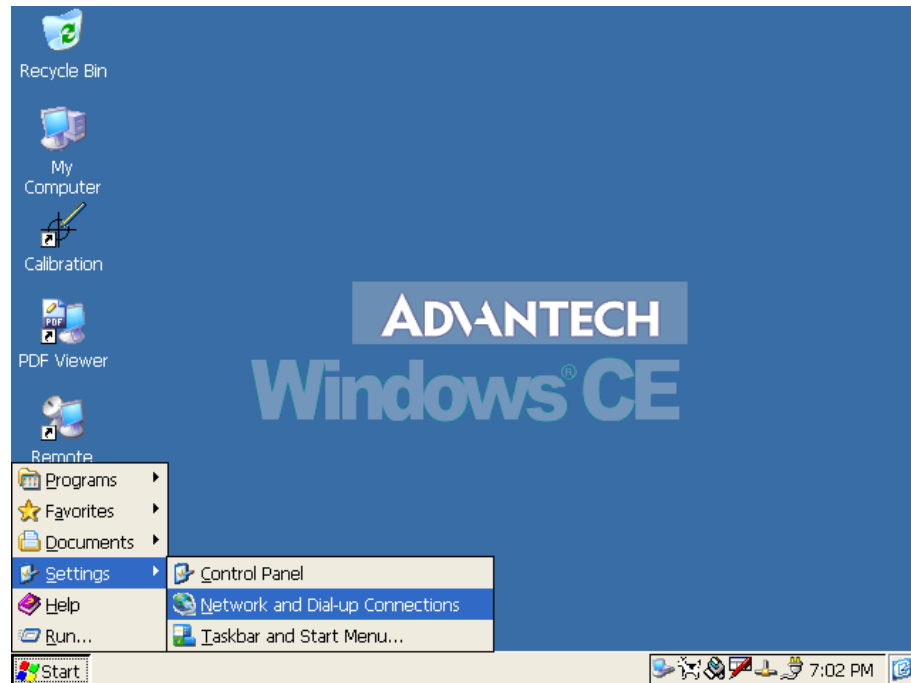
NOTE: In below example, we use COM1 of UNO and COM1 of the host.

5. Setup the communication environment of UNO and the host

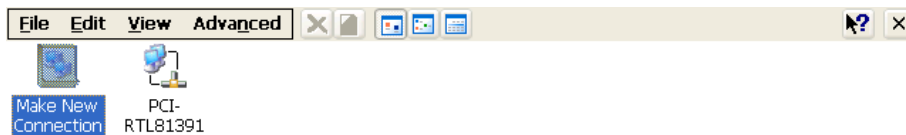
## Setup the communication environment of UNO

### A. Configure the COM1 of UNO

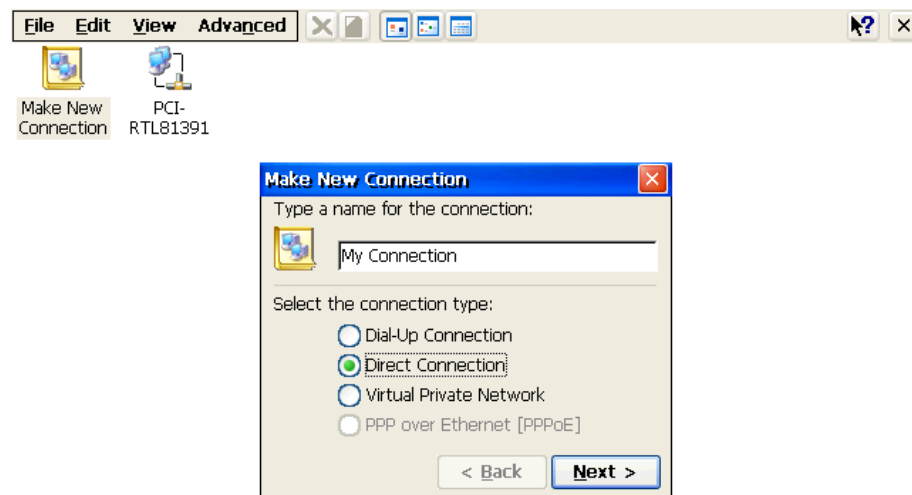
Press Start of task bar of window system and select **“Setting”** → **“Network and Dial-up connections”**.



### B. Click the icon **“Make New Connection”** to make a new connection.

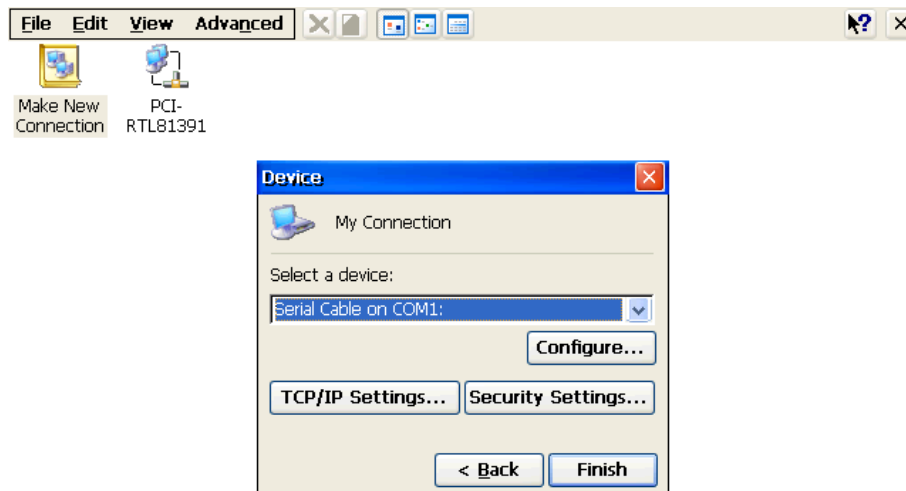


Select the connection type: **Direct Connection**, then press **Next** button.

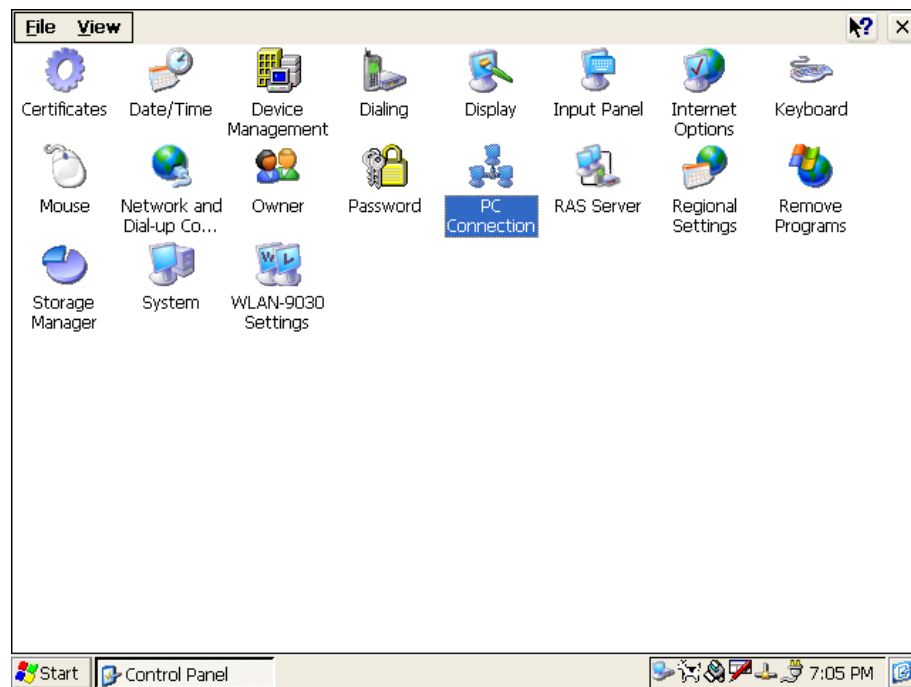


C. Choose the COM port of UNO.

In this example, we use COM1 of UNO to connect with COM1 of the host.

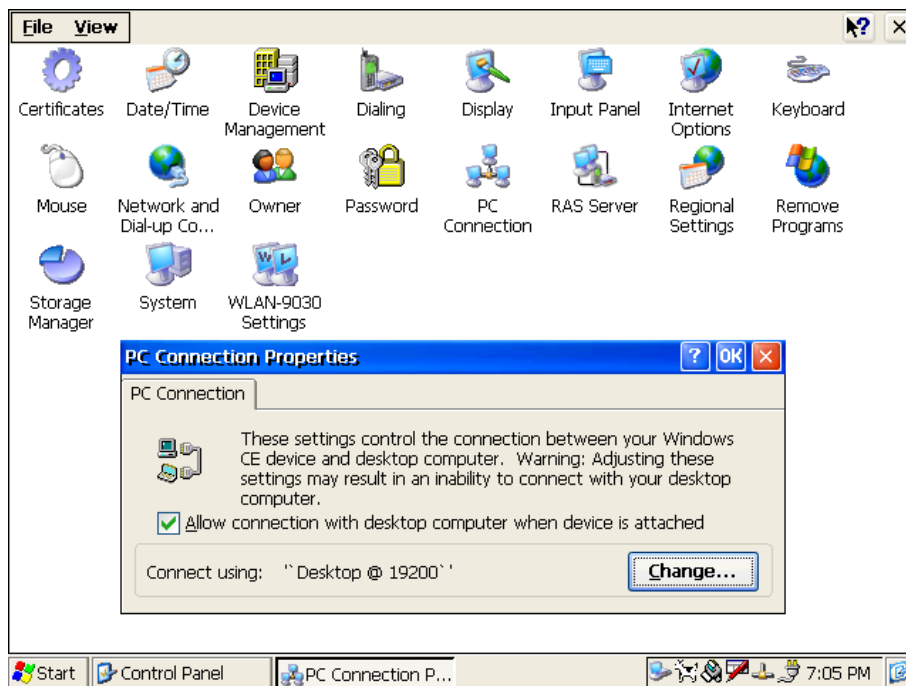


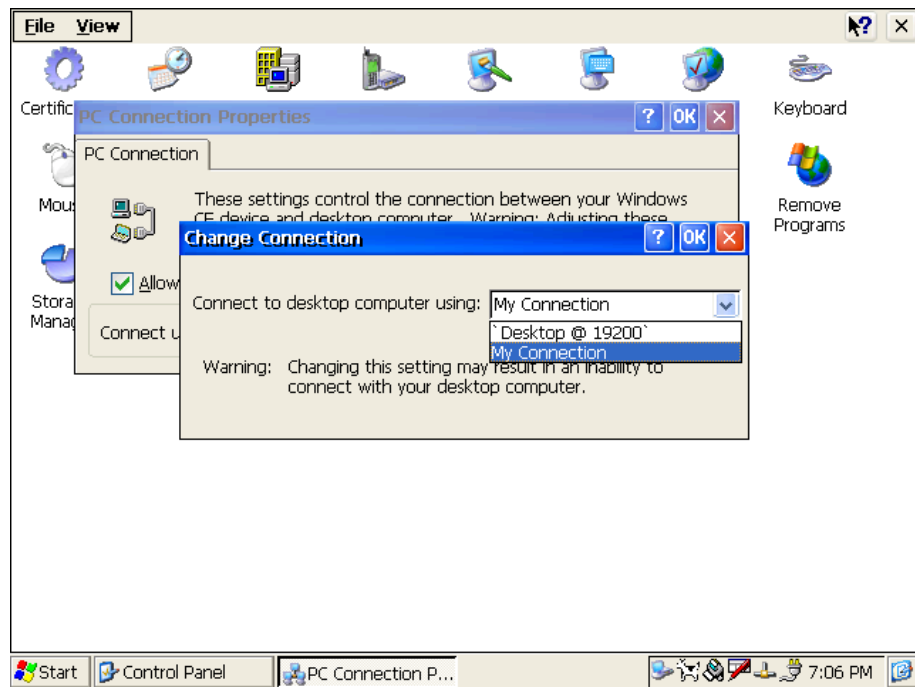
D. Press **Start** → **Setting** → **Control Panel**, and then click “**PC Communication**” icon.



E. Click **Change** button to choose your network communication.

In this example, change the network communication to “**My Connection**”.



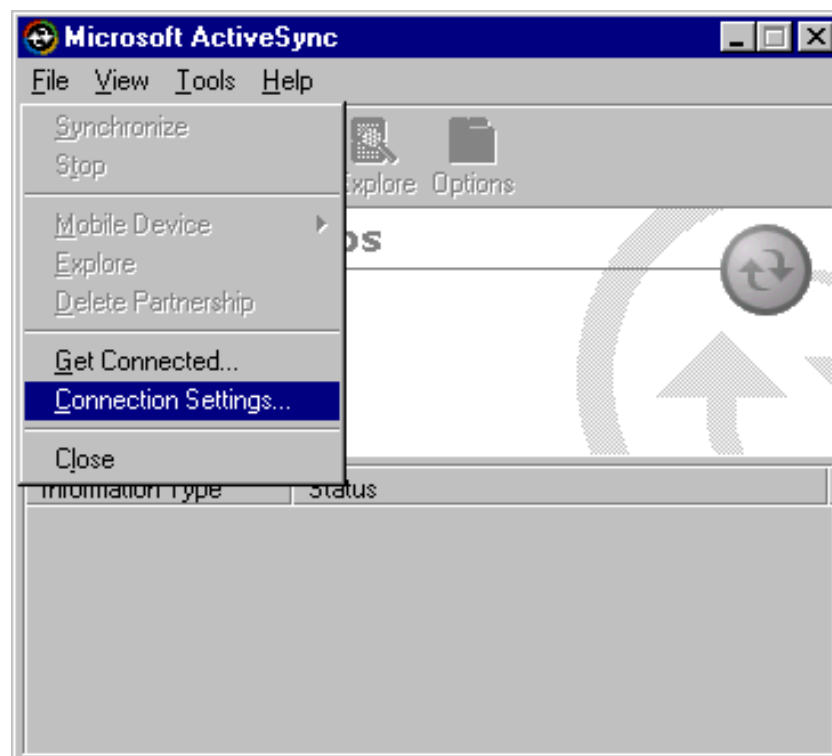


## Setting the communication environment of the host

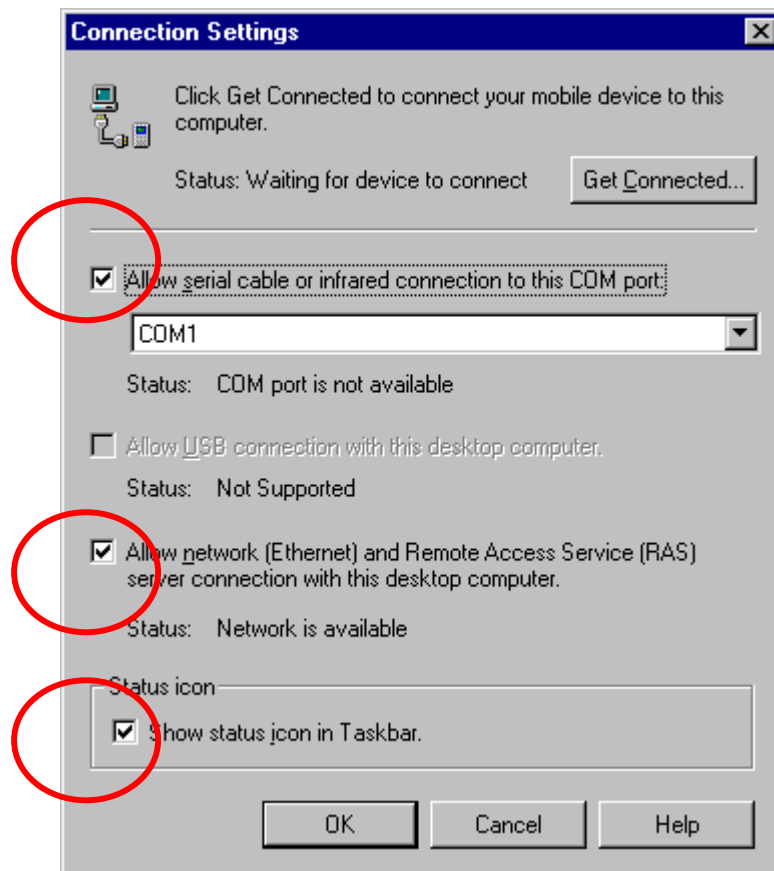
- A. Double click the icon **ActiveSync**.



- B. Select **File**→**Connection Settings**



C. Configure the connection settings as below.

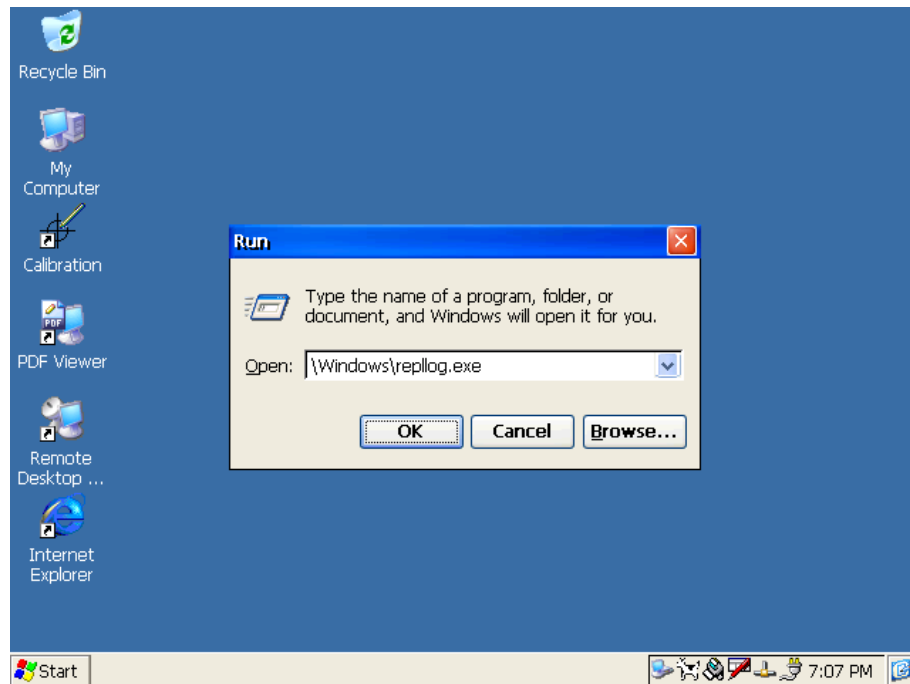


D. After you configure the connection setting, it will show the below dialog window when you press Get Connected

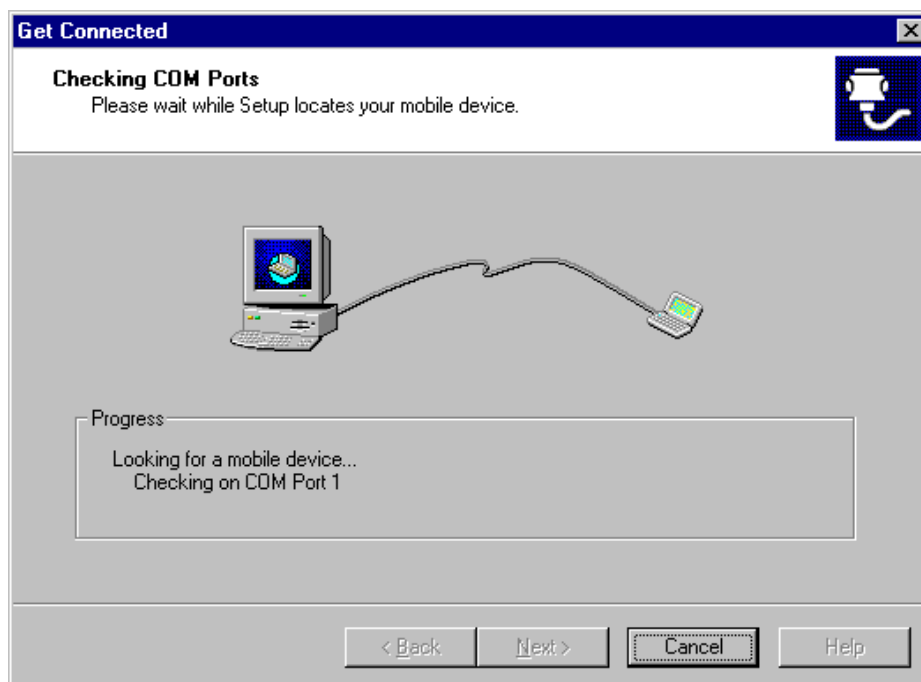


**NOTE: Don't click Next button at this time.**

- E. Press **Start** → **Run** of UNO; enter the **\\windows\\replog.exe** in the command line of and press **OK** button.

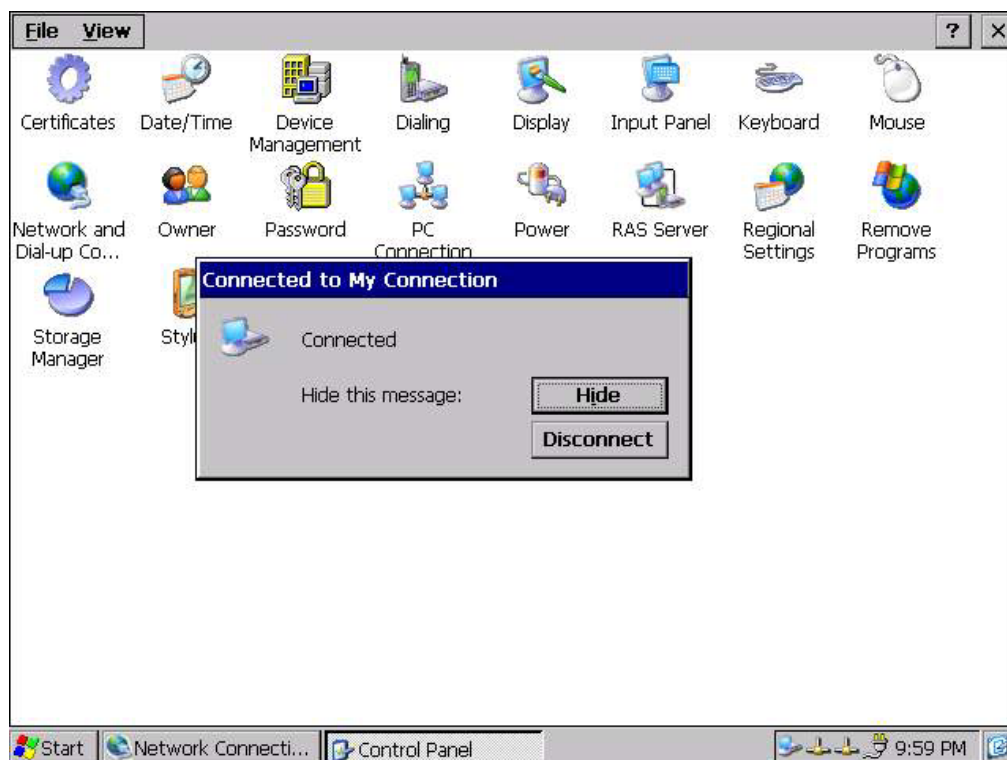


- F. Now, press the **Next** button in the “**Get Connected**” dialog in the host. It will build the connection between UNO and host.



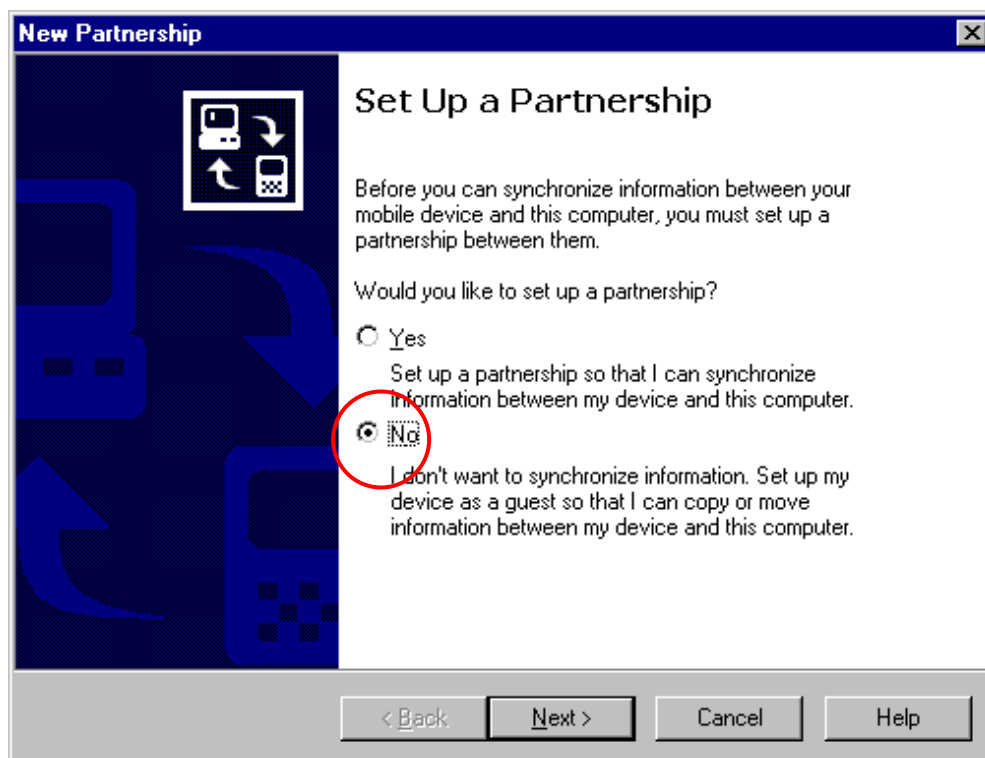
- G. If the connection between UNO and the host, you will see below message in UNO.



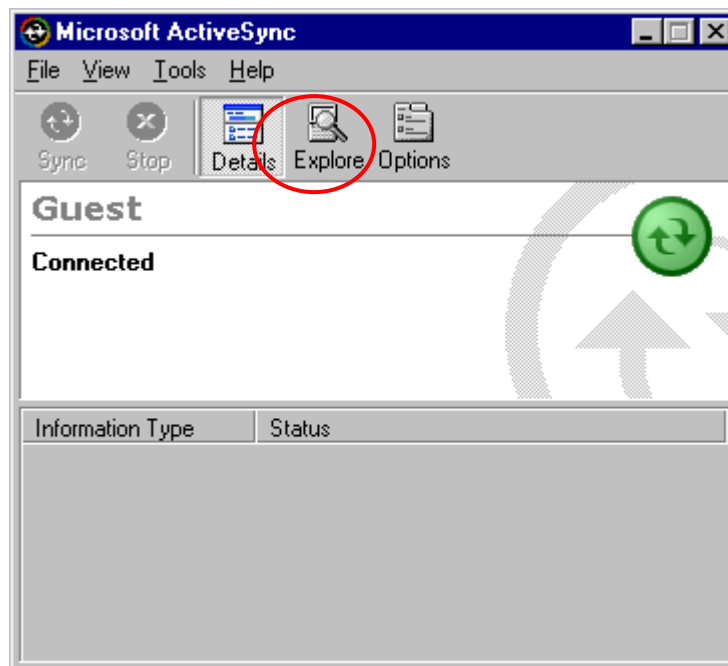


H. If the connection between UNO and the host, you will see below message in the host.  
Select **No**, then press **Next** button.

I.



After the New partnership setting, it will show the below dialog window in the host.



- J. Press **Explore** button in Microsoft ActiveSync window, it will pop up the **Mobile Device** window to display **the file resources and information of UNO** as below:  
For example, if you click the icon “**My Documents**”, you will see the content of storage in UNO.

