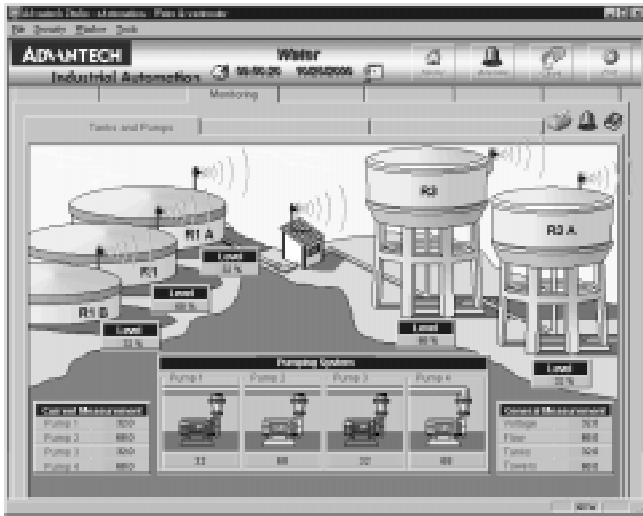


# Advantech Studio for eAutomation



Advantech Studio, a powerful, integrated collection of automation tools that includes all the building blocks required to develop modern Human Machine Interfaces (HMI), and Supervisory Control and Data Acquisition System (SCADA) applications that run native on Windows NT, 2000, 98, and CE or in an Internet and Intranet environment. A simple drag and drop, point and click development environment simplifies the most complex behavior of your live processes. Advantech Studio is the ideal E-Automation solution in the industry.

## Features & benefits

- Publish real-time dynamic and animated graphic screens, trends, alarms, reports, and recipes to standard browsers
- Import and export recipes, reports and real-time data to XML format
- Use the same development environment as applications running on Windows NT, 2000, 98, and CE or on the Web
- Integrates seamlessly with your Windows desktop applications (such as Microsoft Word and Excel)
- View multiple Advantech clients from one Web browser
- Provides on-line configuration and remote management capabilities
- Provides extensive development support tools such as message register, error codes, event codes, Database Spy, and Login
- Multi-level security for applications, including use over Intranets and Internet.
- Conforms to industry standards such as Microsoft DNA, OPC, DDE, ODBC, XML, and ActiveX
- Advanced math library with more than 100 standard functions
- Flexible and easy-to-use scripting language

## Application

- Remote Utility Management
- Building Automation
- Water and Wastewater Management
- Factory Automation
- Machine Builder



# Advantech Studio for Windows CE



Advantech Studio for Windows®CE is the world's FIRST complete supervisory control, process monitoring and operator interface software available for the new Microsoft Windows®CE operating system platform. Advantech Studio for Windows CE operates in diskless handheld, palm, mobile and embedded PCs, making it ideal for end user or OEM applications.

Advantech Studio for Windows®CE is based on Advantech Studio's full scale Windows NT/98 supervisory control and monitoring system, currently being used in nearly 2,000 installations worldwide. Advantech Studio for Windows CE has almost all of the same features, including an object-oriented database, math functions, report generation, archiving, alarms, batch recipes, and interfaces for PLCs, remote I/O and TCP/IP networking. In other words, Advantech Studio for Windows®CE is a full-function supervisory control and monitoring system that fits in the palm of your hand or can be embedded in the chip set of a low-cost operator interface.

## Functions

- Object Oriented Screen Editor
- Dynamic Symbol Library
- Recipes in ASCII format
- Trend and History Files
- Built-in Reports
- Networking
- Alarms

## Applications

Advantech Studio is powerful software product designed for the development of applications used in process supervision, automation, and control. The flexibility of Studio allows you to design and implement applications for:

- Data acquisition
- Man-machine interfaces
- Local supervisory stations
- Data concentrators on distributed processes
- Remote supervisory stations
- Data communications with corporate systems

Studio process automation applications run on microcomputers connected in real-time to machinery or processes via programmable controllers, remote I/O devices, or other data acquisition equipment.

## Hardware Platforms

- **Web0IT-642:** 5.7" QVGA STN Web-enabled operator interface Terminal
- **Web0IT-650:** 6.4" VGA TFT Web-enabled operator interface Terminal
- **Web0IT-1000:** 10.4" VGA DSTN Web-enabled operator interface Terminal
- **Web0IT-1240:** 12.1" SVGA TFT Web-enabled operator interface Terminal
- **WebLink-2040:** Web-enabled Device connection
- **WebLink-2051:** Web-enabled Device Connection with PC/104 Extension

## Communication Drivers

<b>Advantech</b>	ADAM-4000, ADAM-5000/485
<b>AEG Schnieder ( Modicon Square D Telemecanique )</b>	AEG Compact PLC* ModCon 984E* Quantum Family
	ModCon 984E* Ethernet Quantum Ethernet Family
	MODBUS Plus compatible equipment
	Symax
<b>Allen-Bradley</b>	Family PLC2 Family PLC5 Family SLC500 Family 5000
	Dataliner DL50 Display
<b>Altus</b>	AL- 2420/3405
	Family1000 / 2000/3130
<b>Cutler-Hammer</b>	D50*, D300
<b>Foxboro</b>	743V / 743C 761C / 762C
<b>GE-Fanuc</b>	Series 90, 90/30 CPU 341*
<b>Hitachi</b>	H-Series
	EM-II Series EB-Series
<b>Klockner-Moeller</b>	PS316 / PS32, PS4-201-MM1 LPC42
	PS3, PS4-101 / 111, PS4-201
<b>Mitsubishi</b>	FX-232AW
<b>Omron</b>	C-series Rack PCs Sysmac way Host link units Sysmac C200H*
	E5CK / E5AF
<b>OPTO22</b>	Analog/Digital Boards
<b>Phoenix</b>	Interbus Compatible
<b>Siemens</b>	S5 (PG port)
	S5 / S7 3964R, S7 (MPI)
	Profibus DP Slave Compatible
	Profibus DP Master Compatible
	Profibus FMS Compatible
	S5-945 PG Port
<b>Toshiba</b>	MXT521
<b>Yokogawa</b>	Prosec-T2E
	UT35
	HR2500E
	DA100
	UT37/UT38
	UT750, UP750, UT550, UT520, UP550, UT350, UT320, UM350, UM330, UP350
YS100	
<b>InterBus</b>	-
<b>ModBus Ethernet</b>	-
<b>ModBus</b>	RTU/ASCII
<b>OPC</b>	-

## System Requirements

### Development Environment

- Microsoft® Windows®2000, Windows®NT 4.0 service pak 4 and higher, or Windows®98
- Min. 32 MB of RAM. (Recommended 64 MB of RAM)
- 100 MB of free hard-disk space for installation
- CD-ROM driver (for installation only)

### Runtime Environment

- Windows®CE 2.12 or higher and Internet Explorer for CE
- Min. 32 MB of memory

or

- Microsoft® Windows®2000, Windows®NT 4.0 Service Pak 4 and higher, or Windows®98
- Min. 32 MB of RAM. (Recommended 64 MB of RAM)
- Web Browser that support ActiveX objects

## Ordering Information

### ❑ ASTUDIO-WNT/PRO

Advantech Studio for eAutomation Professional Edition (includes WinNT/CE Development software and one set of WinNT runtime software)

### ❑ ASTUDIO-WNT/DEV

Advantech Studio for eAutomation WinNT/CE Development Edition

### ❑ ASTUDIO-WNT/RT

Advantech Studio for eAutomation WinNT Runtime Edition